



# Judy Vest

Sizes 2-20  
with cup sizes A-H

5/8 inch (1.5 cm) seam allowances  
are included on all pattern pieces.

Page 1 of 2

### PAGE 1 PATTERN PIECES

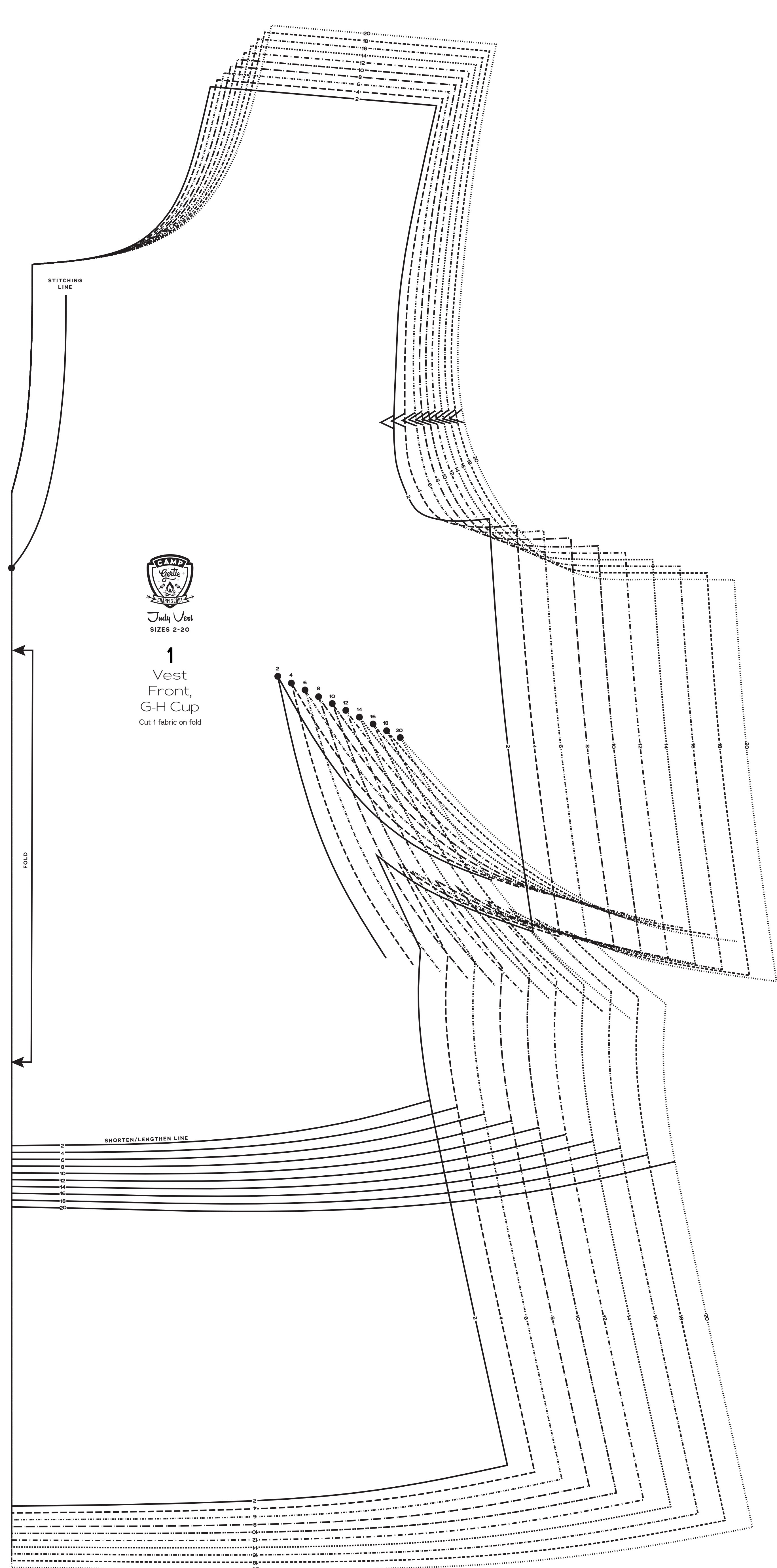
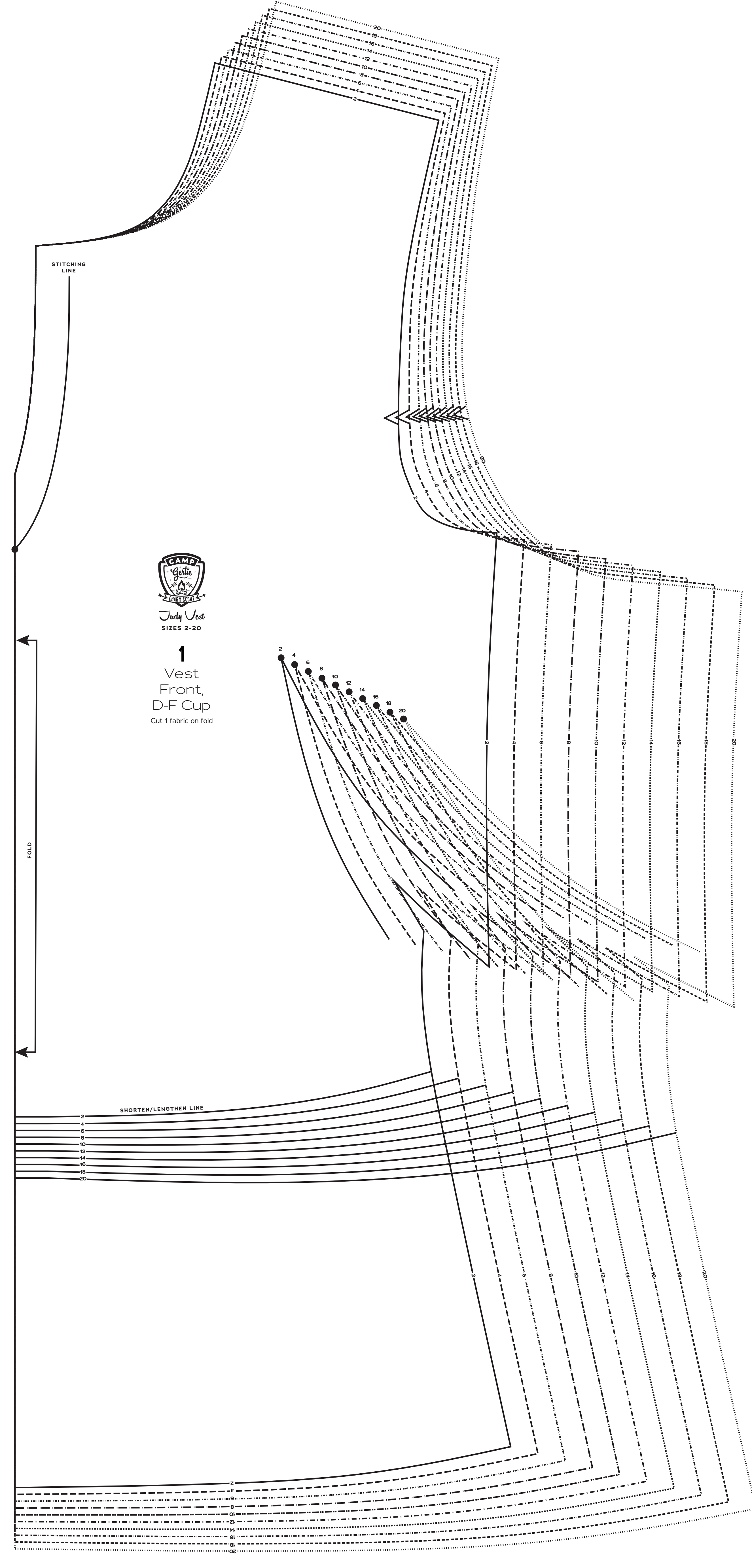
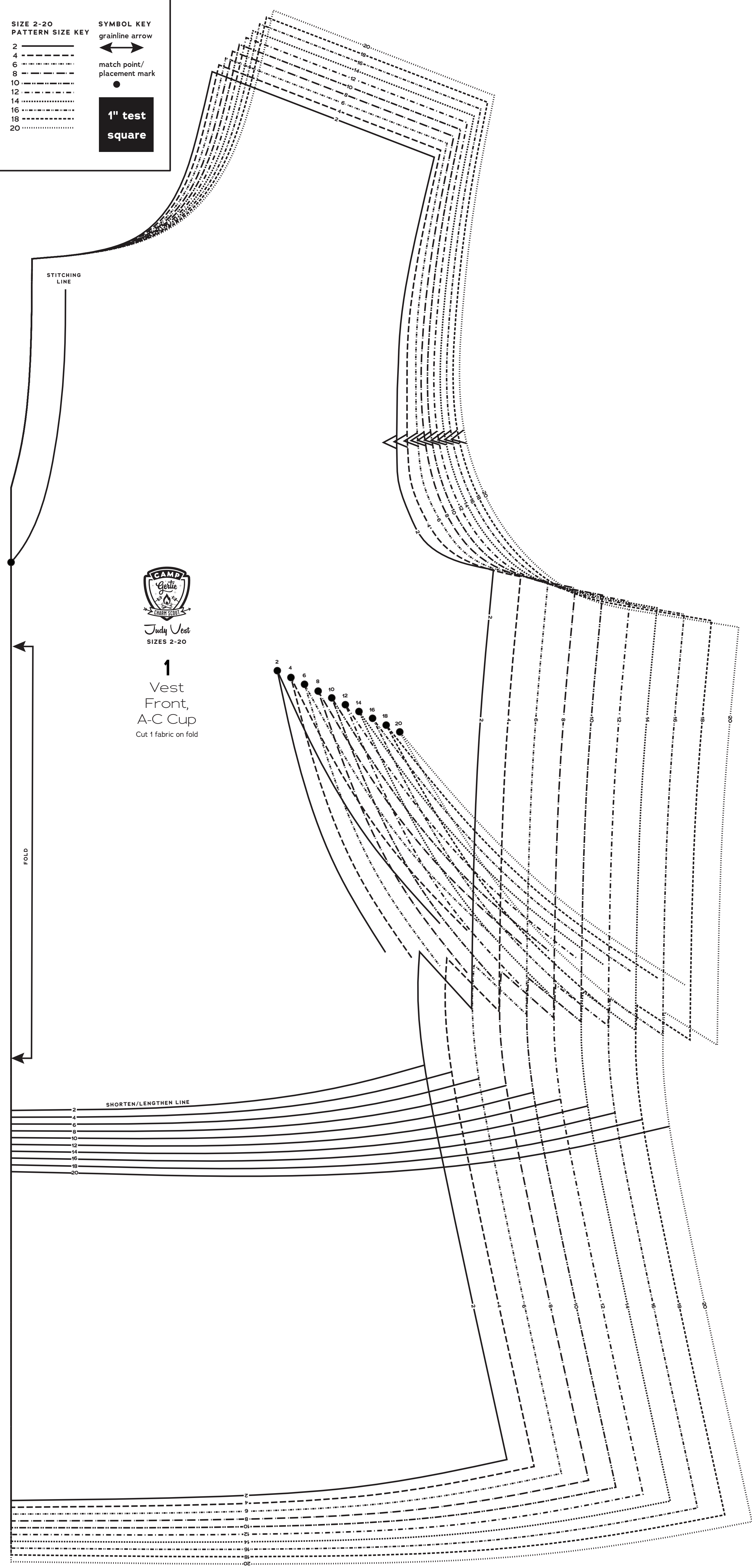
- 1 Vest Front, A-C Cup
- 1 Vest Front, D-F Cup
- 1 Vest Front, G-H Cup

**SIZE 2-20**  
**PATTERN SIZE KEY**

2	-----
4	-----
6	-----
8	-----
10	-----
12	-----
14	-----
16	-----
18	-----
20	-----

**SYMBOL KEY**

	grainline arrow
	match point/ placement mark
	1" test square







# Judy Vest

Sizes 2-20  
with cup sizes A-H

5/8 inch (1.5 cm) seam allowances  
are included on all pattern pieces.

Page 2 of 2

### PAGE 2 PATTERN PIECES

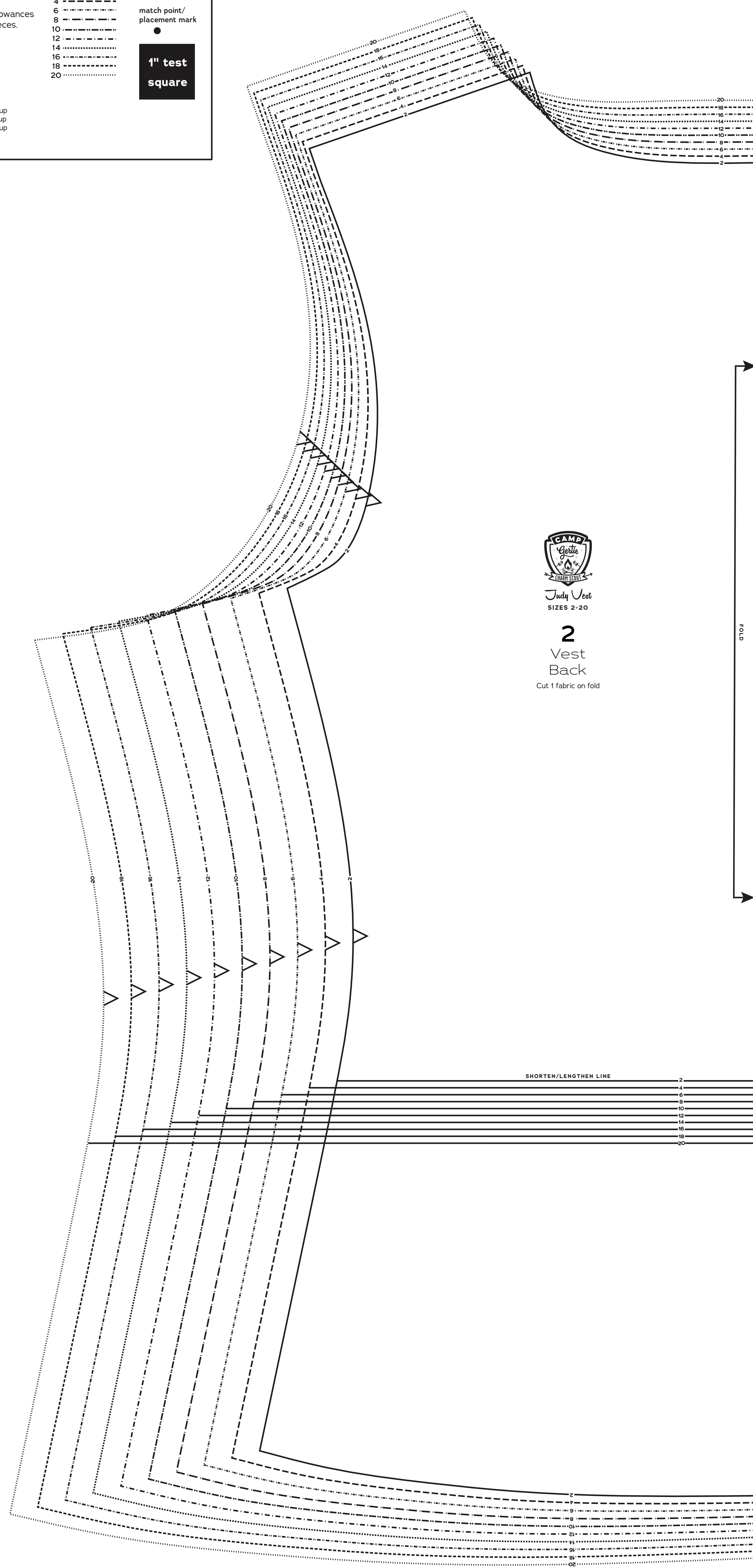
- 2 Vest Back
- 3 Front Neck Facing, A-C Cup
- 3 Front Neck Facing, D-F Cup
- 3 Front Neck Facing, G-H Cup
- 4 Back Neck Facing
- 5 Front Armhole Facing, A-C Cup
- 5 Front Armhole Facing, D-F Cup
- 5 Front Armhole Facing, G-H Cup
- 6 Back Armhole Facing

**SIZE 2-20**  
**PATTERN SIZE KEY**

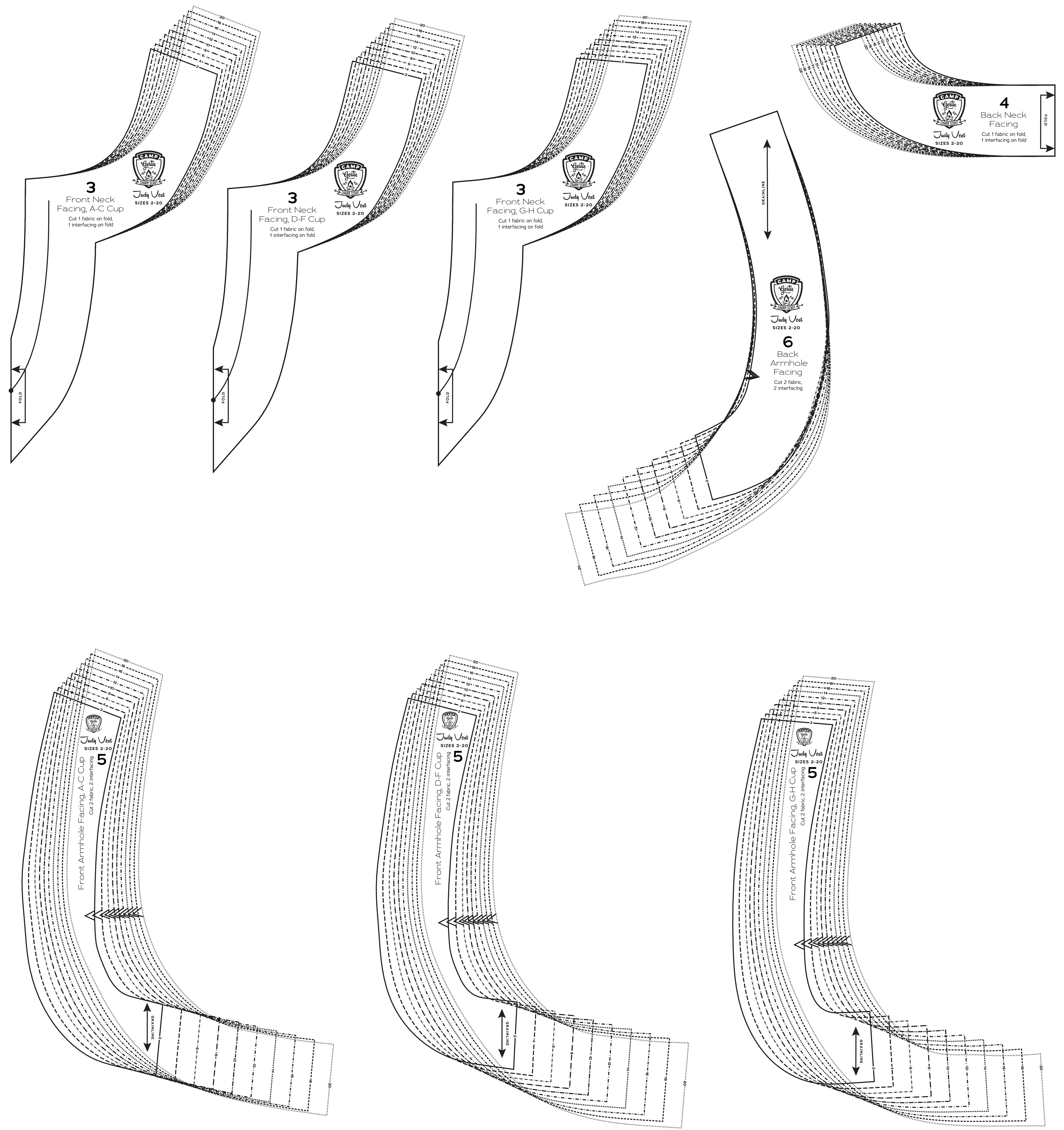
2	---
4	----
6	-----
8	-----
10	-----
12	-----
14	-----
16	-----
18	-----
20	-----

**SYMBOL KEY**

	grainline arrow
	match point/ placement mark
	1" test square



Judy Vest  
SIZES 2-20  
**2**  
Vest Back  
Cut 1 fabric on fold



**3**  
Front Neck Facing, A-C Cup  
Cut 1 fabric on fold,  
1 interfacing on fold

**3**  
Front Neck Facing, D-F Cup  
Cut 1 fabric on fold,  
1 interfacing on fold

**3**  
Front Neck Facing, G-H Cup  
Cut 1 fabric on fold,  
1 interfacing on fold

**4**  
Back Neck Facing  
Cut 1 fabric on fold,  
1 interfacing on fold

**5**  
Front Armhole Facing, A-C Cup  
Cut 2 fabric, 2 interfacing

**5**  
Front Armhole Facing, D-F Cup  
Cut 2 fabric, 2 interfacing

**5**  
Front Armhole Facing, G-H Cup  
Cut 2 fabric, 2 interfacing

**6**  
Back Armhole Facing  
Cut 2 fabric,  
2 interfacing