

**ROSE DRESSING GOWN**

Sizes 2-20

5/8 inch (1.5 cm) seam allowances are included on all pattern pieces.

Page 1 of 5

**PAGE 1 PATTERN PIECES**

DG1 Bodice/Undercollar Front

DG3 Skirt Front

**PATTERN SIZE KEY**

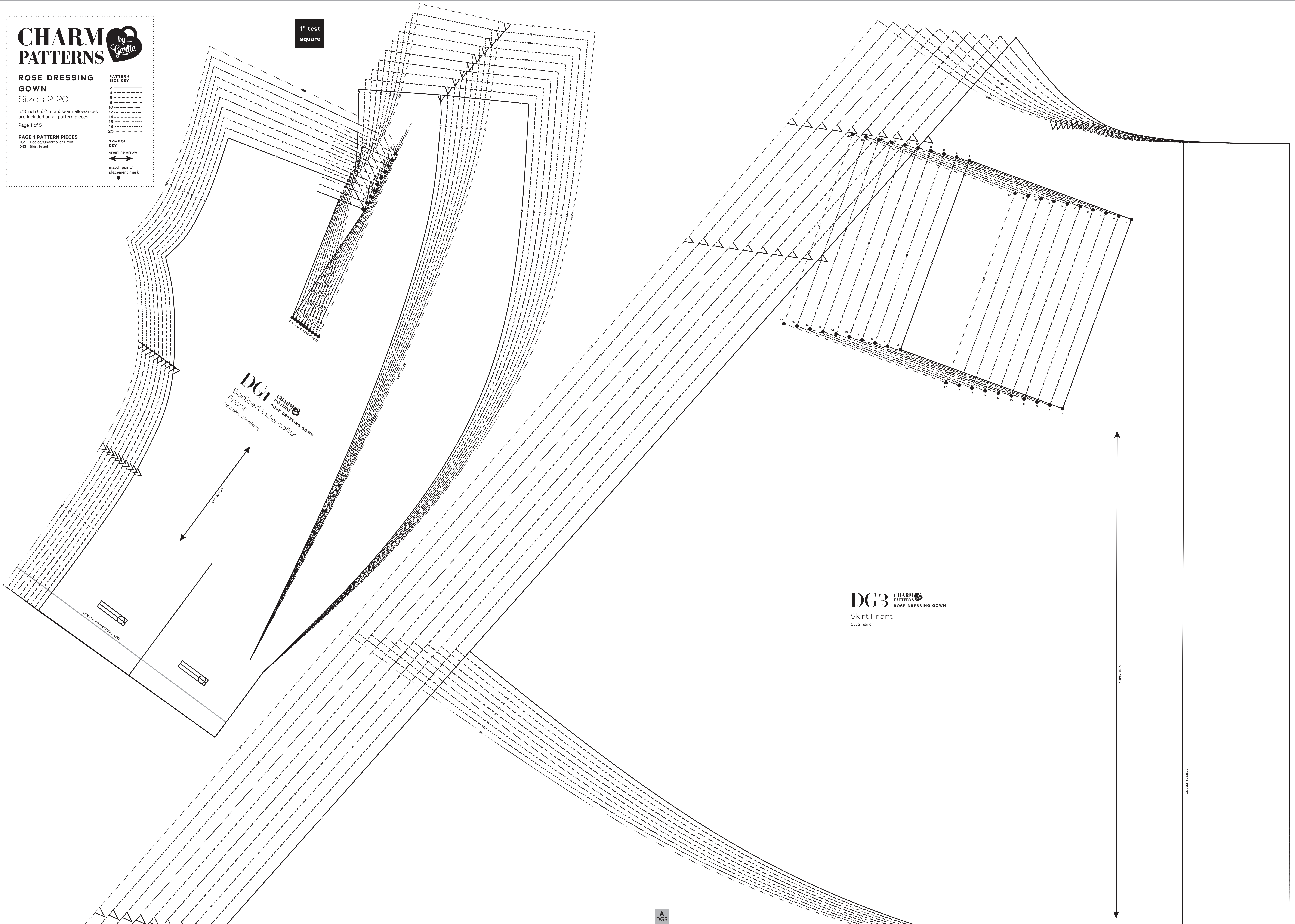
2	-----
4	-----
6	-----
8	-----
10	-----
12	-----
14	-----
16	-----
18	-----
20	-----

**SYMBOL KEY**

grainline arrow

match point/ placement mark

1" test square

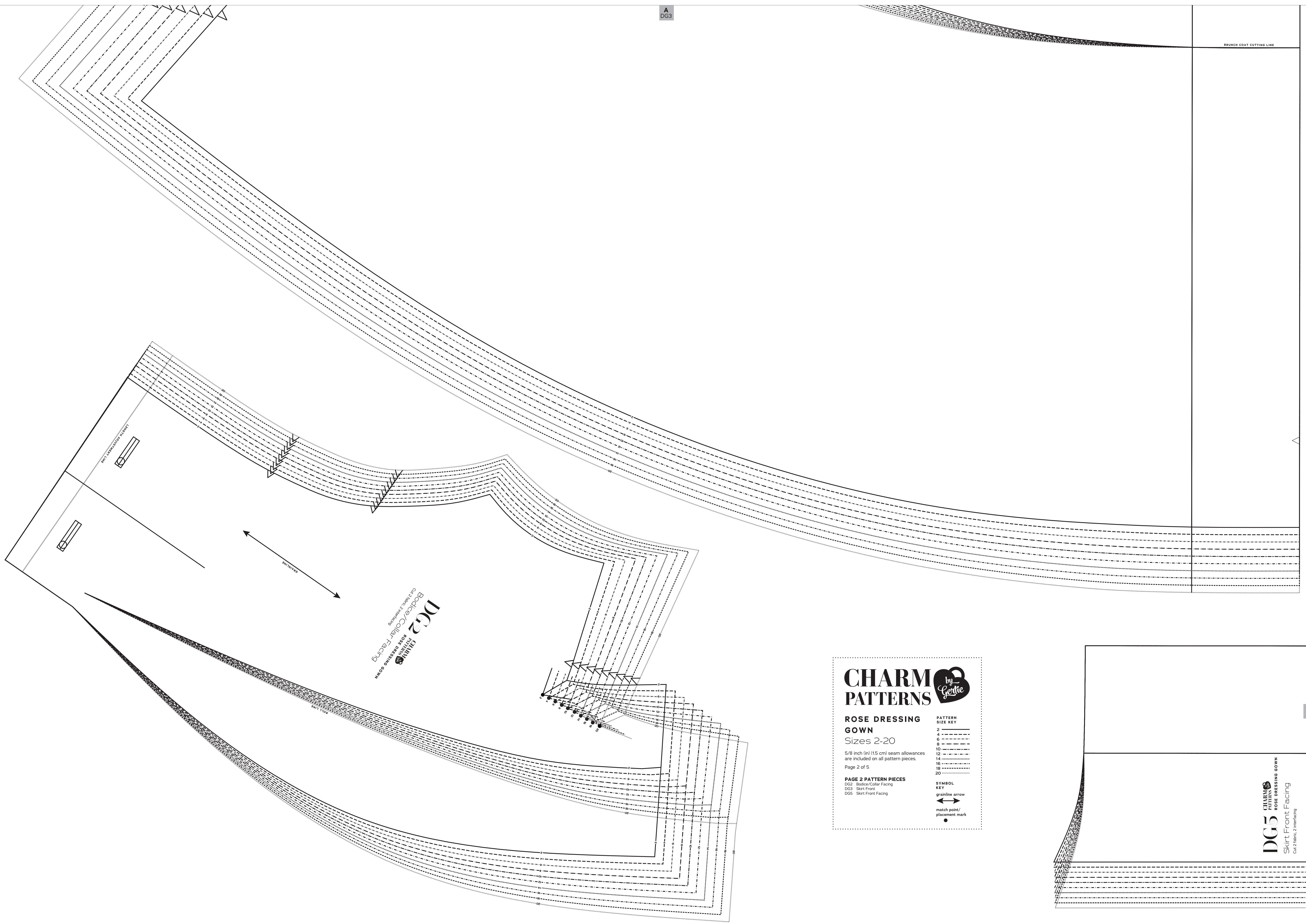


**DGI** CHARM PATTERNS  
ROSE DRESSING GOWN  
Bodice/Undercollar  
Front  
Cut 2 fabric, 2 interfacing

**DG3** CHARM PATTERNS  
ROSE DRESSING GOWN  
Skirt Front  
Cut 2 fabric

A  
DG3

BRUNCH COAT CUTTING LINE



**CHARM**  
 PATTERNS  
 ROSE DRESSING GOWN  
 DG2 Bodice/Collar Facing  
 DG3 Skirt Front  
 DG5 Skirt Front Facing  
 Cut 2 fabric, 2 interfacing

**CHARM PATTERNS** *by Lettie*

**ROSE DRESSING GOWN**  
 Sizes 2-20

5/8 inch (1.5 cm) seam allowances are included on all pattern pieces.  
 Page 2 of 5

**PAGE 2 PATTERN PIECES**  
 DG2 Bodice/Collar Facing  
 DG3 Skirt Front  
 DG5 Skirt Front Facing

**PATTERN SIZE KEY**  
 2 ---  
 4 ---  
 6 ---  
 8 ---  
 10 ---  
 12 ---  
 14 ---  
 16 ---  
 18 ---  
 20 ---

**SYMBOL KEY**  
 grainline arrow  
 match point/ placement mark

A  
DG5

**CHARM**  
 PATTERNS  
 ROSE DRESSING GOWN  
 DG5 Skirt Front Facing  
 Cut 2 fabric, 2 interfacing

# CHARM by *Gertie* PATTERNS

## ROSE DRESSING GOWN

Sizes 2-20

5/8 inch (1.5 cm) seam allowances  
are included on all pattern pieces.

Page 3 of 5

### PAGE 3 PATTERN PIECES

DG4 Skirt Back

#### PATTERN SIZE KEY

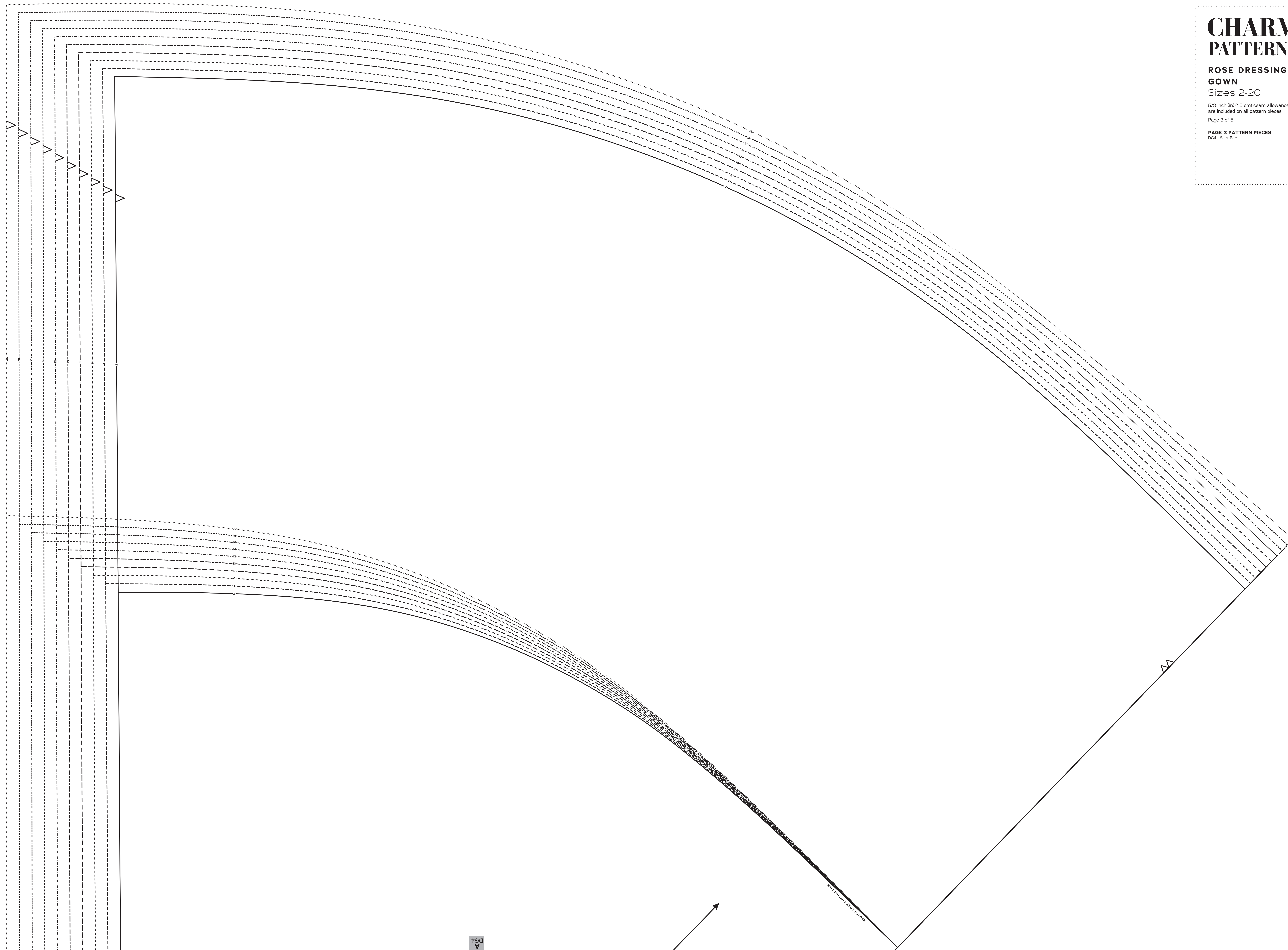
2	-----
4	-----
6	-----
8	-----
10	-----
12	-----
14	-----
16	-----
18	-----
20	-----

#### SYMBOL KEY

grainline arrow

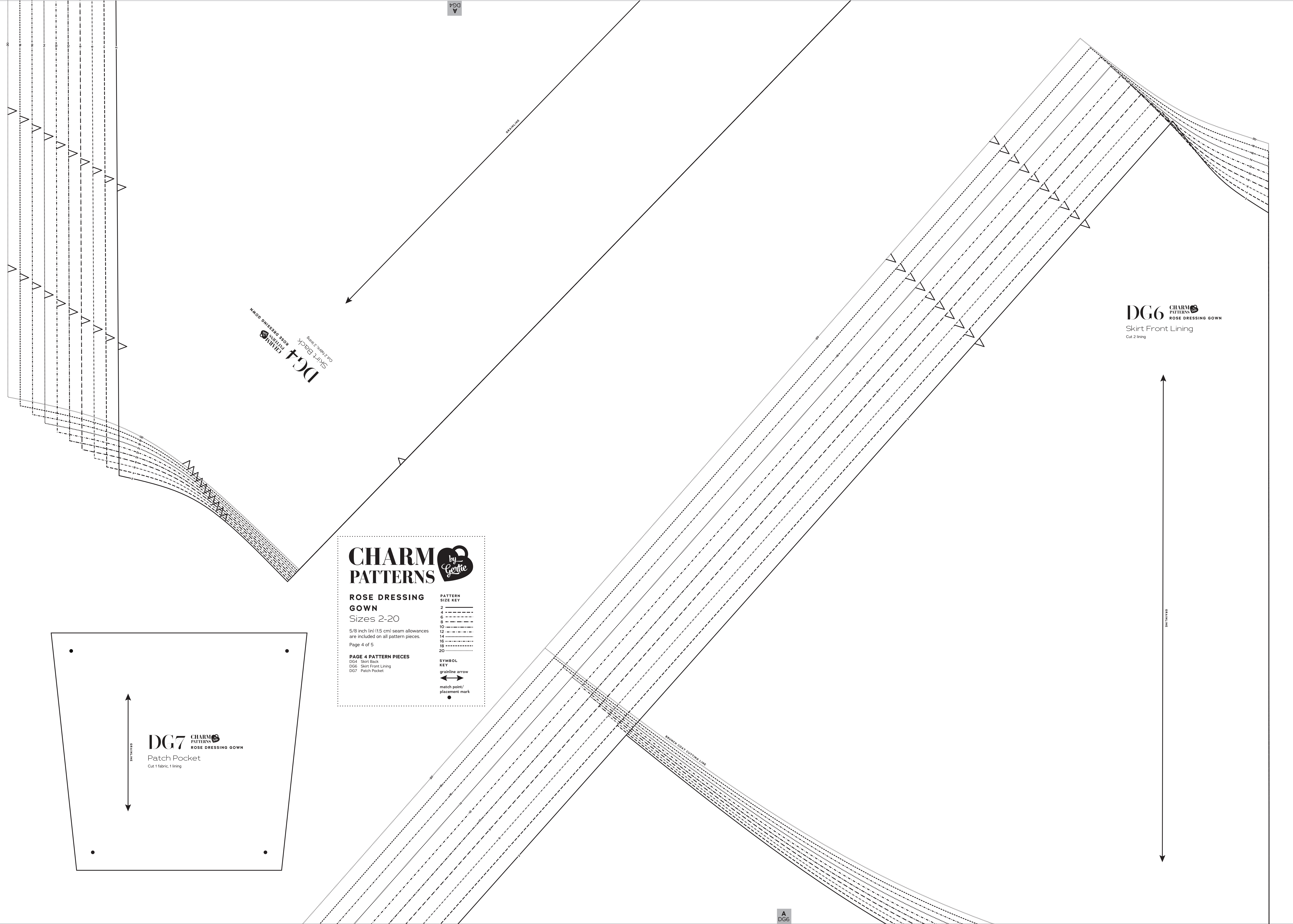
match point/  
placement mark

•



DG4  
A

DG4



DG4 CHARM PATTERNS ROSE DRESSING GOWN  
Skirt Back  
Cut 2 pieces

DG6 CHARM PATTERNS ROSE DRESSING GOWN  
Skirt Front Lining  
Cut 2 lining

**CHARM PATTERNS** *by Gertie*

**ROSE DRESSING GOWN**  
Sizes 2-20

5/8 inch (1.5 cm) seam allowances are included on all pattern pieces.  
Page 4 of 5

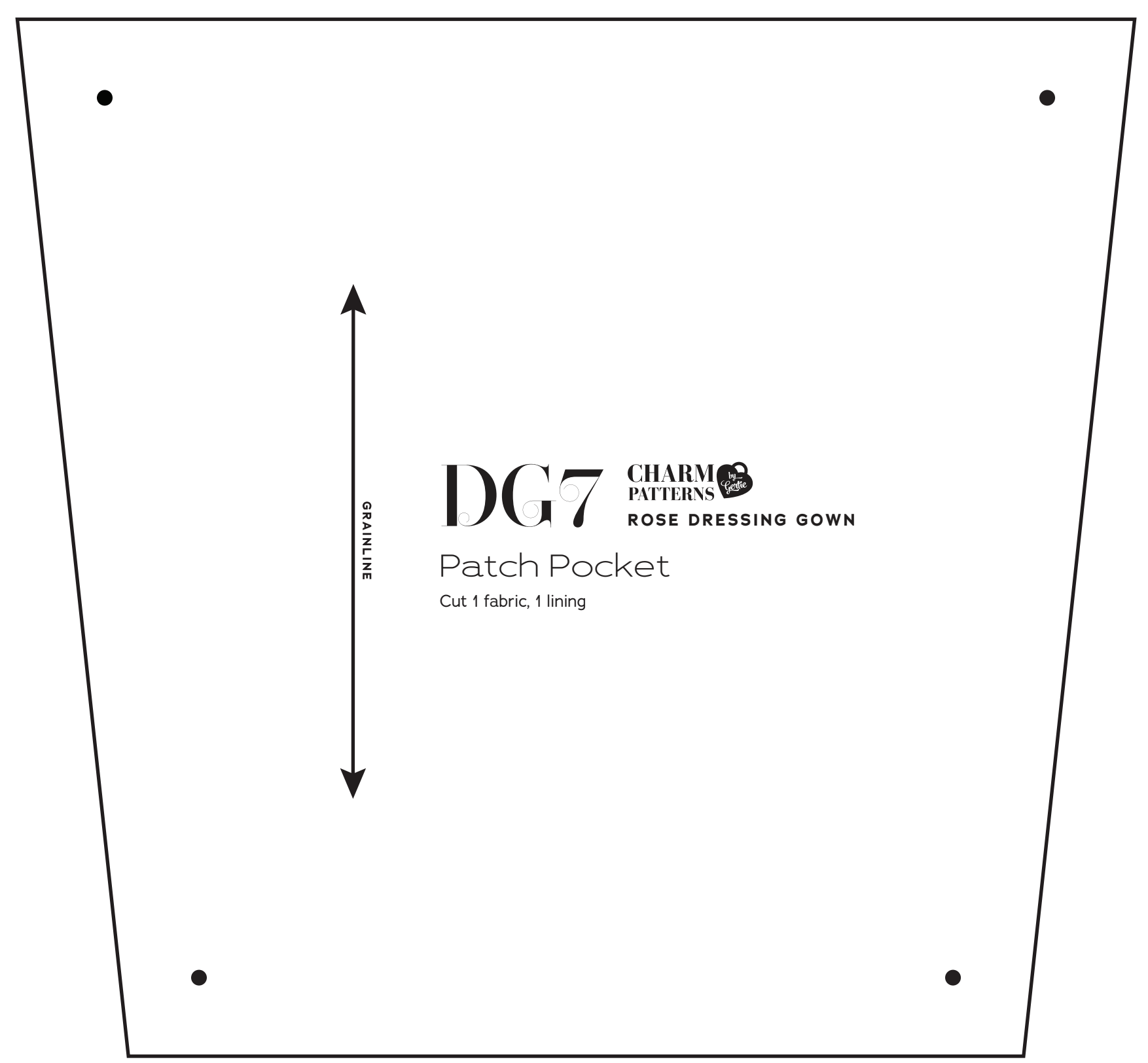
**PAGE 4 PATTERN PIECES**  
DG4 Skirt Back  
DG6 Skirt Front Lining  
DG7 Patch Pocket

**PATTERN SIZE KEY**

2	-----
4	-----
6	-----
8	-----
10	-----
12	-----
14	-----
16	-----
18	-----
20	-----

**SYMBOL KEY**

— grainline arrow  
 <--> match point/  
 placement mark  
 •



A  
DG6

38 1/2" (98 cm)

# CHARM PATTERNS by Gertie

## ROSE DRESSING GOWN

Sizes 2-20

5/8 inch (1.5 cm) seam allowances are included on all pattern pieces.

Page 5 of 5

### PAGE 5 PATTERN PIECES

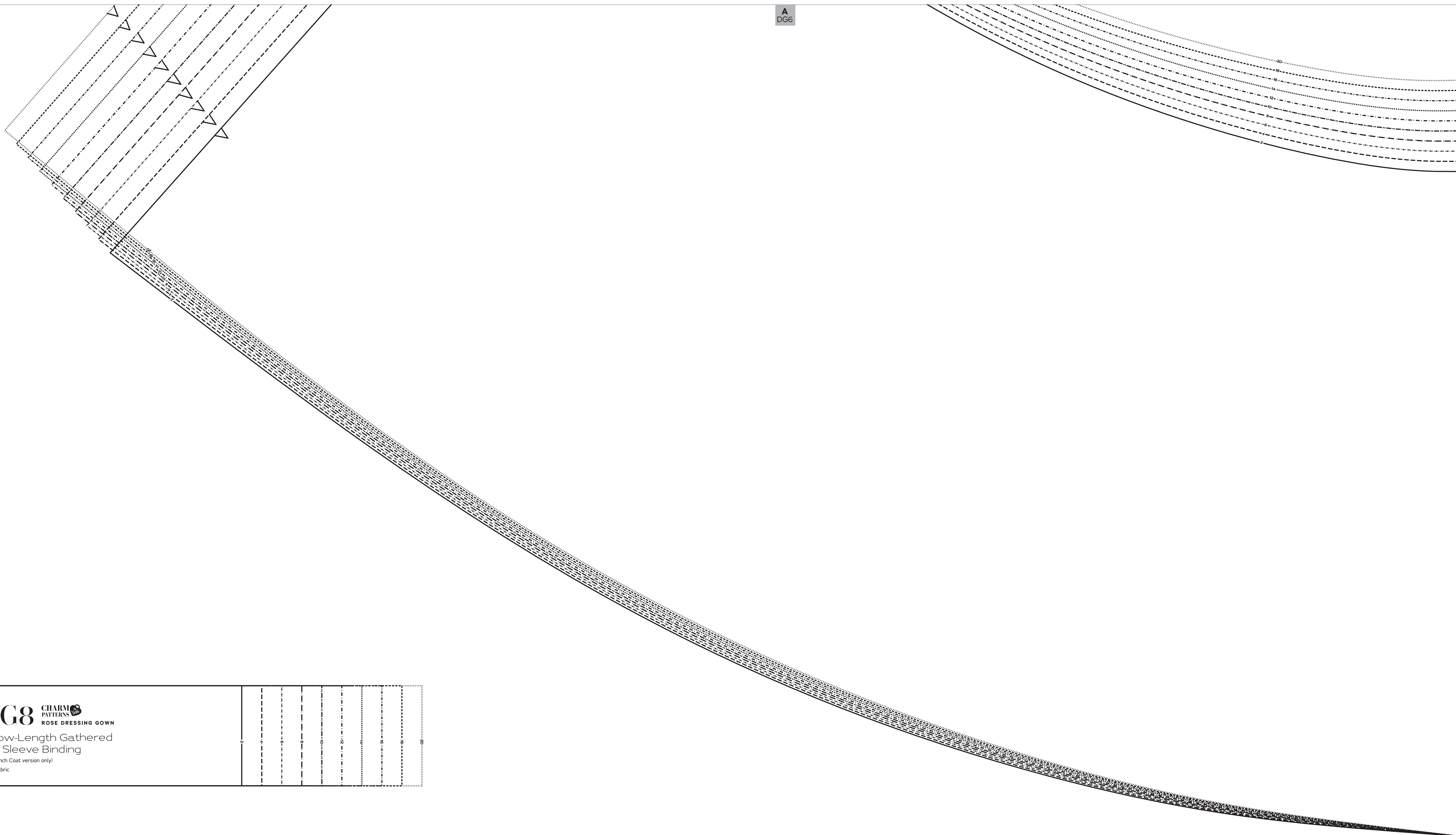
- DG5 Skirt Front Facing
- DG6 Skirt Front Lining
- DG8 Elbow-Length Gathered Bell Sleeve Binding
- DG9 Bound Buttonhole Patch

**PATTERN SIZE KEY**

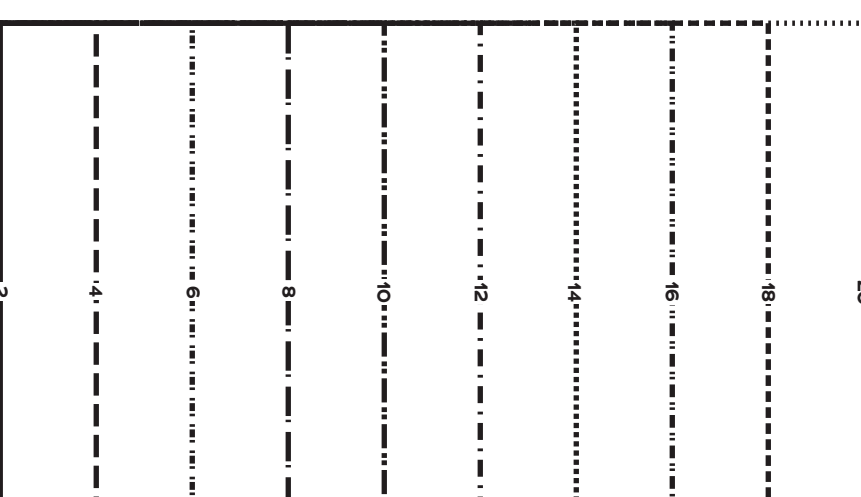
2	-----
4	-----
6	-----
8	-----
10	-----
12	-----
14	-----
16	-----
18	-----
20	-----

- SYMBOL KEY**
- grainline arrow
  - ←→ match point/ placement mark
  -

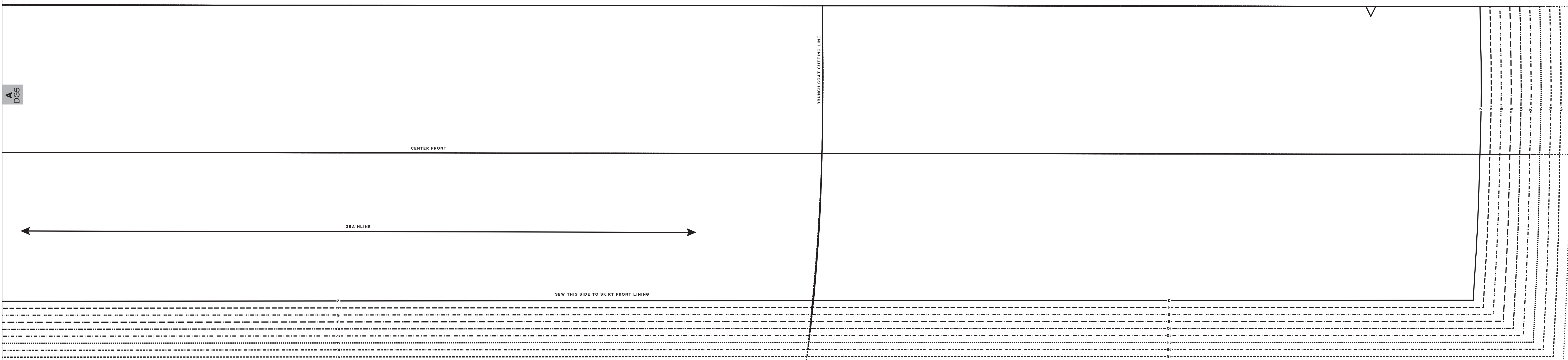
A  
DG6



**DG8** CHARM PATTERNS by Gertie  
ROSE DRESSING GOWN  
Elbow-Length Gathered  
Bell Sleeve Binding  
(for Brunch Coat version only)  
Cut 2 fabric



A  
DG5



**DG9** CHARM PATTERNS by Gertie  
ROSE DRESSING GOWN  
Bound Buttonhole Patch  
Cut 1 fabric 1 organza