

# Skaven Glowing Warpstone - Plague Monk – Mamikon Patreon

Hi fellow Wizards and Necromancers!

In this tutorial we will continue painting the beautiful Plague Monk model from the new Skabikk Plaguepack – I will show you I've painted the Glowing Warpstone on this miniature. Explanation on layer and glaze consistency is on the last slide. Let's get into the tutorial!



**PATREON** |

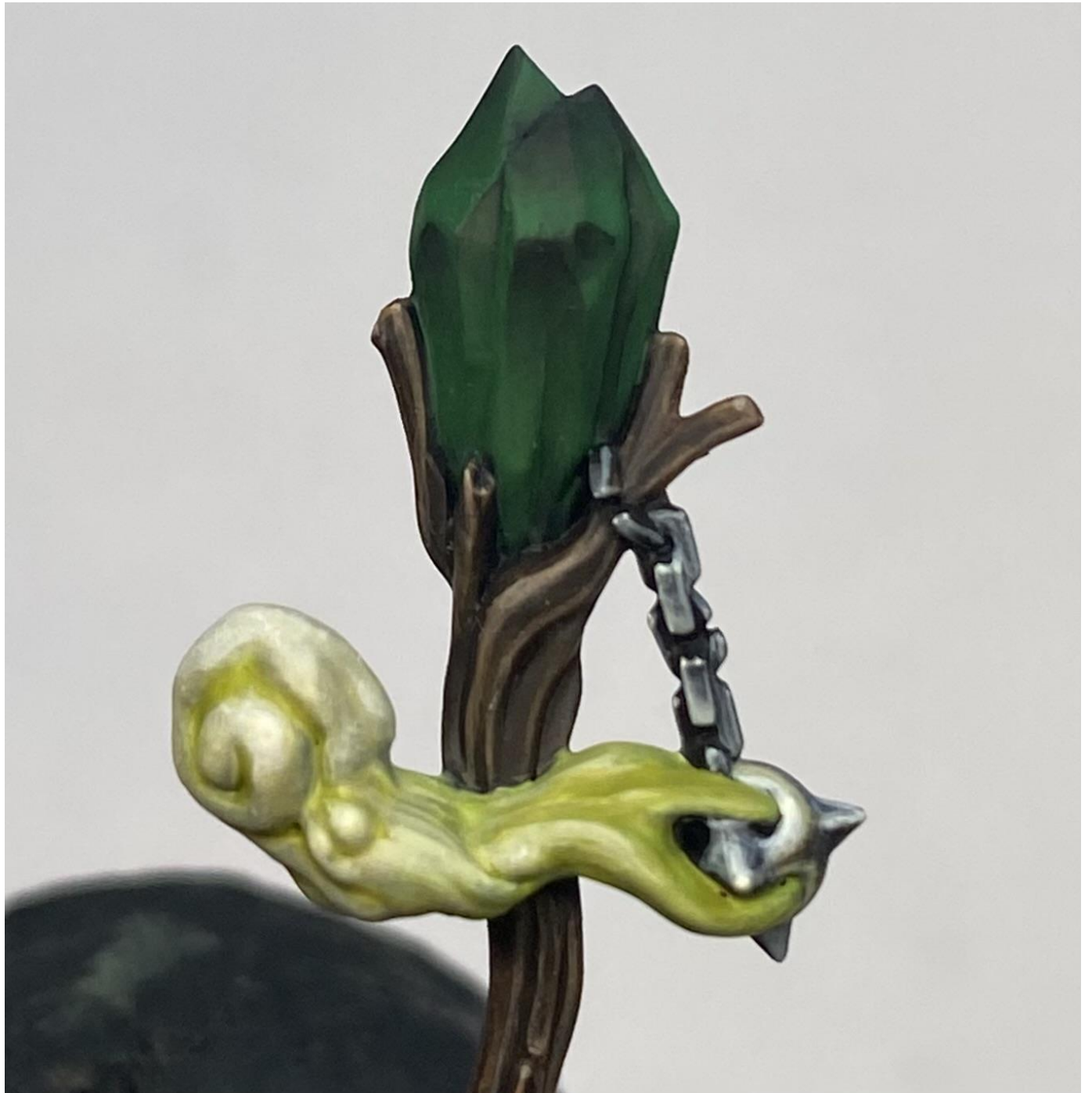
Step 1.

We will start with a layer consistency basecoat of Caliban Green.



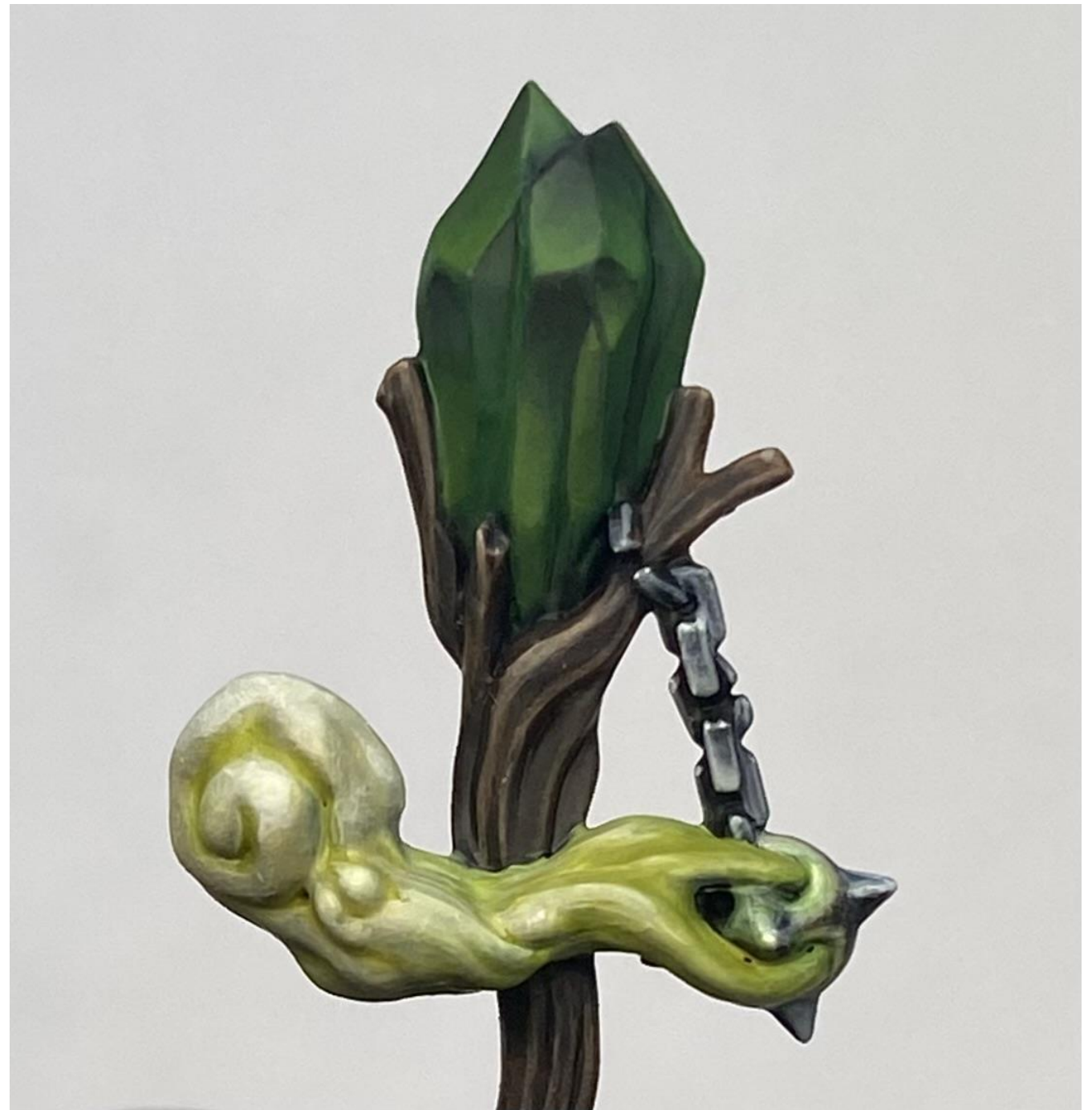
Step 2.

We will follow that with a glaze consistency shade towards each small section of the Warpstone.



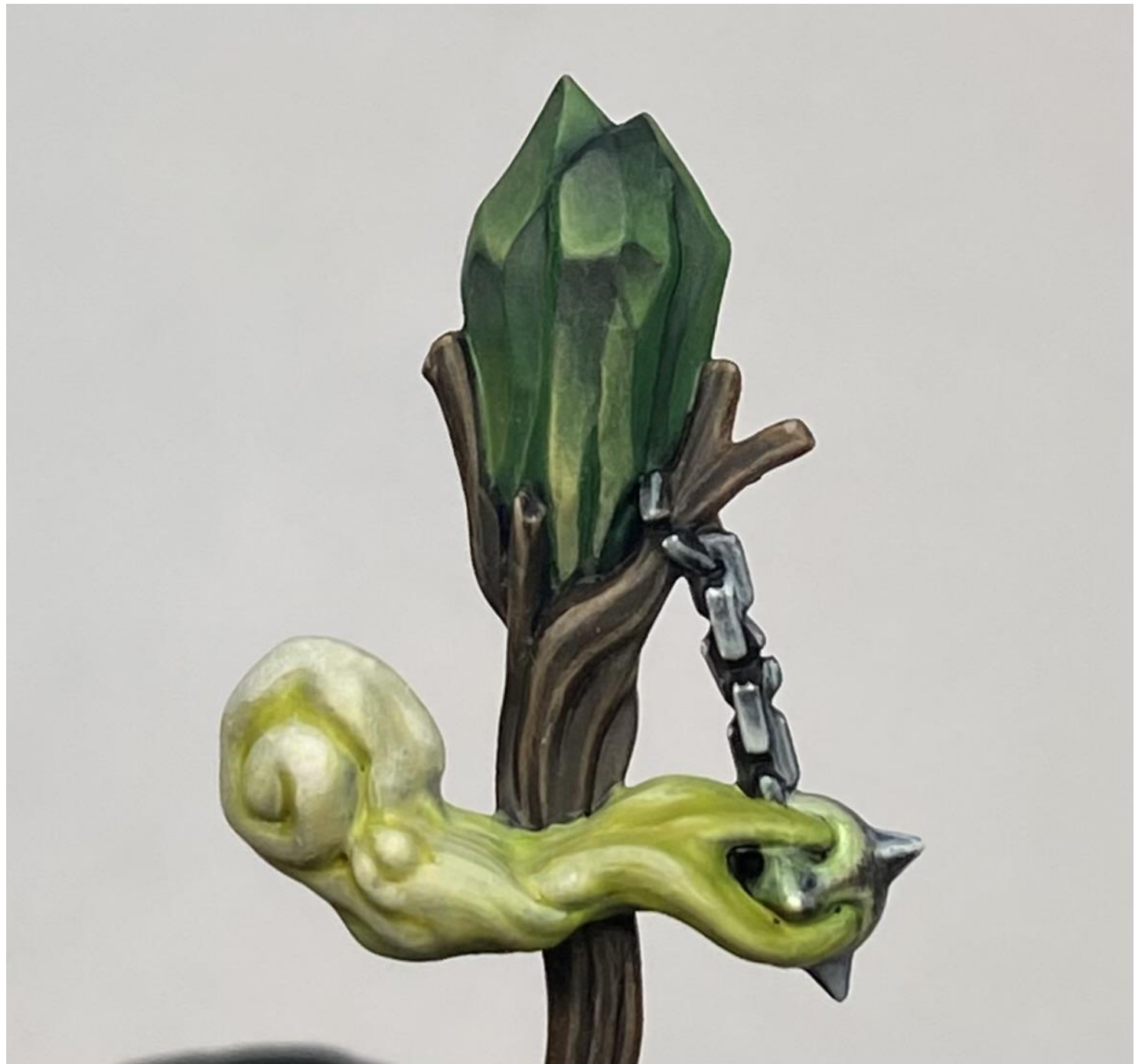
### Step 3.

Next, we will use a 1:1 mix of Yriel Yellow and Caliban Green, in glaze consistency, to add highlights towards each section on the Warpstone.



Step 4.

We will follow that with a glaze consistency highlight with a 1:1 mix of Yriel Yellow and Ushabti Bone. As always, with every next highlight, make sure you are covering a smaller area than previously, to allow a smooth transition between the colors.



Step 5.

Next, we will use layer consistency Ushabti Bone to add edge highlights all over the surface of the Warpstone.



Step 6.

Next, we will use a glaze consistency 1:1 mix of Caliban Green and Yriel Yellow to add a single coat of it over the entirety of the surface of the Warpstone. This will work as a filter, bringing all of the colors together.



Step 7.

Next, we will use a glaze consistency mix of Caliban Green and Ushabti Bone, 1:1, to add a glowing effect around the Gemstone.





Step 8.

In the final step, we will use layer consistency Ivory (from AK Interactive) to add an edge highlight on the top facing edges of the Gemstone. We will also add a spot highlight with White, layer consistency, on the sharp connecting points.



Here are a few shots of the finished product:



And here is a collage of the steps for convenience:



Thank you very much for supporting me – it means the world to me! I dream of being able to paint and make tutorials full time, so if you like my Patreon – please tell your friends about it. It would make a massive difference to me and hopefully it will be beneficial for your friends too :)

\*Layer consistently = paint mixed in a 1:1 ratio with water.

\*Glaze consistently = paint mixed in a 1:3 ratio with water.

Best wishes,

Mamikon