



# Loretta Shorts

A PATREON EXCLUSIVE DESIGN



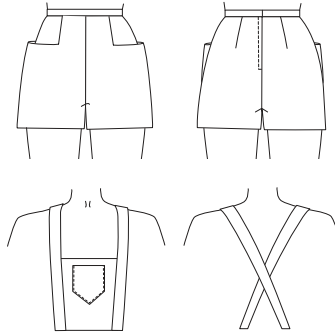
Get ready for summer! Perfect for the boardwalk or your own backyard paradise, the Loretta shorts feature fabulous pockets and an iconic (and comfortable!) '50s silhouette. Even better, these shorts are part of the Charm Patterns "L Series," which means they mix and match with the Lamour Dress and Liz Dress bodices to make your vintage playsuit fantasies a reality.

*soxo, Gertie*

## PATTERN EXPANSION POSSIBILITIES

The Loretta Shorts can be made on their own, as shown in the video, but they also have a few exciting expansion options when combined with other Charm Patterns.

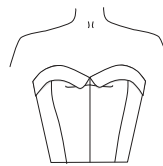
**To make a pair of adorable shorts overalls,** use the Stanwyck Skirt suspender straps and the new updated bib piece provided with this expansion (it is narrower to match the seams of the shorts). Follow the instructions for making the bib and sewing the buttons and buttonholes to make it removeable.



**Add a bib pocket!** We've included a pocket to make your overalls even cuter. Serge the raw edges of the pocket, turn under the 5/8-inch (in) seam allowances on all edges, and pin as desired to the bib. Edgestitch the pocket in place around the sides and lower edge.

The shorts can also be paired with the Liz Dress or Lamour Dress bodices for **a fabulous '50s romper!** Omit the waistband and sew the shorts to the bodice at the waistline. Line the bodice only and hand stitch the lining at the waistline for a clean finish.

**Add a cute neckline foldover** to your Lamour-Loretta romper! This little "collar" look was so popular in the '50s. It is designed for use only with the Lamour Bodice; follow the Lamour's construction order for the Bodice Sash option, substituting the Loretta's Bust Foldover for the sash. Cut two sets of the foldover piece. Interface one set (this will be the outer layer, as worn). Pin each interfaced foldover piece to each non-interfaced foldover piece and stitch around all sides except the upper notched edge. Grade the seam allowances and clip curves of lower edge. Turn foldover right side out and press. Baste the foldover to the bodice neckline and side seams. Complete bodice construction.



## RESOURCES

[Lamour Dress pattern](#)

(for interchangeable bodice)

[Liz Dress pattern](#)

(for interchangeable bodice)

[Stanwyck Skirt pattern](#)

(for interchangeable bib)

[YouTube Stanwyck Skirt video](#)

(for zipper and waistband reference)

[Lamour Dress videos](#) (for Lamour bodice construction reference)

## RECOMMENDED FABRICS

medium-weight/bottom-weight fabrics like denim, sateen, canvas, twill, duck, linen, and linen blends.

## FABRICS USED

[Gingham Canvas](#)

[Speckled Denim](#)

[Polka Dot Stretch Sateen](#)

## TIPS & TRICKS

- Be sure to transfer all circle marks and notches.
- Follow the pocket instructions in the Patreon video! It's a little tricky to visualize with just written instructions.
- Want a longer length? Simply add the desired amount to the bottom of the shorts front and back pattern pieces.

## PATTERN & SUPPLY NOTES

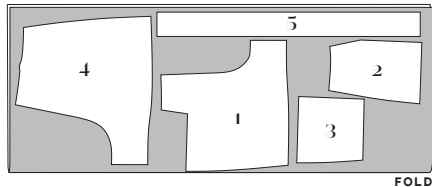
- 1/2 yd (0.5 m) lightweight woven, weft, or tricot fusible interfacing for the waistband and romper bust foldover (extra for bib).
- [Fusible stay tape](#) to stabilize the lapped zipper opening (or cut strips of your fusible interfacing yardage)
- 7-inch-long nylon-coil closed-end zipper
- Hook-and-bar closure

# REQUIRED YARDAGE & CUTTING LAYOUTS

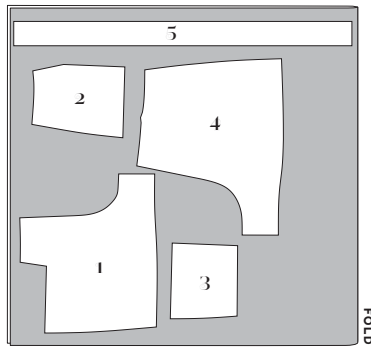
**Note:** All pattern pieces are shown in a “without nap” layout. You may need additional yardage for directional prints, stripes, plaids, and other prints that need to be matched across seamlines.

## Shorts (1, 2, 3, 4, 5, 6, 7, 8)

	Sizes 2-10	Sizes 12-20
45 in	1/2 yd 1.4 m	2 1/2 yd 2.3 m
60 in	1 yd 0.9 m	1 1/2 yd 1.4 m



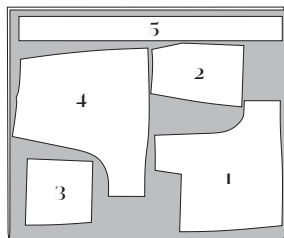
45 in, sizes 2-10



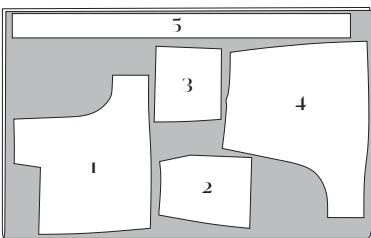
45 in, sizes 12-20\*

\*This layout is different from the others in that it must be done on a crosswise fold of fabric. Open out the full width of fabric and fold raw edge to raw edge, rather than selvedge to selvedge.

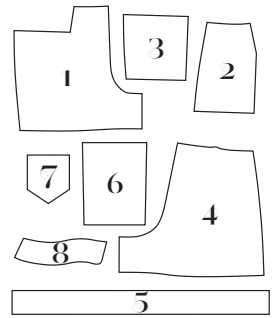
**For Bib cutting layouts,** use piece 6 and follow cutting layouts in Stanwyck Skirt instructions. For romper, see foldover layouts and use Princess Seam Bodice cutting layout in the Lamour Dress instructions.



60 in, sizes 2-10



60 in, sizes 12-20

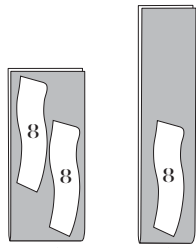


- Shorts Front**  
Cut 2 fabric
- Pocket**  
Cut 2 fabric
- Pocket Bag**  
Cut 2 fabric
- Shorts Back**  
Cut 2 fabric
- Waistband**  
Cut 2 fabric, 1 interfacing
- Bib**  
Cut 2 fabric, 1 interfacing (must be used with suspender straps from the Stanwyck Skirt)
- Bib Pocket**  
Cut 1 fabric
- Romper Bust Foldover**  
Cut 4 fabric, 2 interfacing (must be used with the Lamour Dress bodice)

Be sure to note whether the pieces are cut on a double or single layer of fabric. For a double layer, there will be a note indicating FOLD on the layout.

## Romper Bust Foldover (8)

All Sizes	
45 in	1/4 yd
60 in	0.2 m



45 in, all sizes 60 in, all sizes

## Foldover interfacing (8)

All Sizes	
45 in	1/4 yd
60 in	0.2 m



FOLD

## Waistband interfacing (5)

All Sizes	
45 in	1/4 yd
60 in	0.2 m



## FINISHED MEASUREMENTS

The Loretta Shorts have a fitted waist and a full, flared hip. The pattern was designed to fit with 1 in (2.5 cm) of ease in the waist, 1 1/2 in (3.8 cm) of ease in the upper hip (measured 6 in [15.2 cm] below the natural waist) and 7 1/2 in (19 cm) of ease in the lower hip (measured 10 1/2 in [26.7 cm] below the natural waist). Inseam length on a size 6 is 3 1/4 in (8.3 cm).

Size	2	4	6	8	10	12	14	16	18	20
Waist	25 in 63.5 cm	27 in 68.6 cm	29 in 73.7 cm	31 in 78.7 cm	33 in 83.8 cm	35 in 88.9 cm	37 in 94 cm	39 in 99 cm	41 in 104.1 cm	43 in 109.2 cm
Upper Hip	37.5 in 95.3 cm	39.5 in 100.3 cm	41.5 in 105.4 cm	43.5 in 110.5 cm	45.5 in 115.6 cm	47.5 in 120.7 cm	49.5 in 125.7 cm	51.5 in 130.8 cm	53.5 in 135.9 cm	55.5 in 141 cm
Lower Hip	43.5 in 110.5 cm	45.5 in 115.6 cm	47.5 in 120.7 cm	49.5 in 125.7 cm	51.5 in 130.8 cm	53.5 in 135.9 cm	55.5 in 141 cm	57.5 in 146 cm	59.5 in 151.1 cm	61.5 in 156.2 cm

# SEWING INSTRUCTIONS

**NOTE:** use  $\frac{5}{8}$  in (1.5 cm) seam allowances on all seams.

## SHORTS FRONT

**1. Finishing seams:** If desired, serge the following to finish raw edges (without trimming away any fabric).

- outseam and inseam of shorts front and shorts back
- vertical and lower edges of pocket pieces (2 and 3)

**2. Sew reinforcement stitching** on Shorts Front (1) inner pocket corner using a  $\frac{5}{8}$ -inch (in) (1.5 cm) seam allowance, pivoting at circle. Clip to circle.

**3. Pin Pocket (2) to vertical edge of pocket opening on shorts front,** right sides (RS) together, matching circle marks. Stitch, ending and backstitching at circle, forming a dart shape. Press seam allowance open. Finish raw edge of “dart” on shorts front.

**4. Pin Pocket Bag (3) to horizontal edge of pocket opening on shorts front,** RS together, matching circle marks. Stitch, ending and backstitching at circle. Grade seam allowances so that pocket’s seam allowance is narrower and shorts’ seam allowance is wider. Understitch pocket bag. Press to inside of shorts.

**5. Working from wrong side (WS) of shorts,** pin pocket pieces RS together along inner vertical edge and lower edge. Clip to circle on shorts front seam allowance. Stitch pocket edges together.

**6. Match all side seams together** (shorts front, pocket, and pocket bag) and baste layers together.

**7. Sew shorts fronts together** at center front/crotch seam. Press seam allowances open and finish them, trimming to about  $\frac{3}{8}$  in (1 cm).

## SHORTS BACK

**1. On Shorts Back (4), sew back darts** by bringing dart legs RS together, pinning along marked lines. Stitch along marked lines from dart base to dart point. Backstitch at the beginning but not at the end, leaving a thread tail a few inches long. Tie thread tails by hand. Press darts toward center back.

**2. Stabilize the shorts back zipper opening:** apply  $1\frac{1}{4}$ -in-wide (3 cm) strips of fusible interfacing to the center back opening’s WS above the zipper circles.

**3. Sew the shorts back seam:** pin the shorts backs RS together and stitch the center back seam from the crotch up to the zipper circle. Backstitch. Press the seam allowances open below the zipper circle. Finish seam allowances (if serging, trim seam allowances only below zipper circle).

## 4. Insert lapped zipper:

**a. Sew underlap half of zipper:** with shorts RS out, on right half of zipper opening (the underlap), press seam allowance to WS  $\frac{1}{2}$  in (1.3 cm). Pin zipper under pressed seam allowance, placing zipper teeth just left of fabric fold. Open zipper halfway. Using a zipper foot, stitch from top to bottom next to zipper teeth, just on fold. As needle approaches zipper pull, stop stitching and close zipper; resume stitching to bottom of zipper opening. Backstitch.

**b. Sew overlap half of zipper:** on left half of zipper opening (the overlap), press seam allowance under  $\frac{5}{8}$  in (1.5 cm). With zipper closed, position overlap over zipper teeth so fabric fold just covers stitching on underlap. Pin overlap to zipper tape. Open zipper and topstitch overlap  $\frac{3}{8}$  in (1 cm) from fold, closing zipper when you reach the pull; finish stitching to base. Pivot the work and stitch across base of zipper opening.

## SHORTS SEAMS

**1. Sew shorts outseams:** pin shorts front to shorts back at outseams, RS together. Stitch. Press seam allowances open.

**2. Sew shorts inseam:** pin shorts front to shorts back at inseam, RS together, matching crotch seams. Sew inseam in one continuous stitching line, from one hem allowance to the opposite hem allowance. Press seam allowances open.

## SHORTS HEM

**1. Make a doubled  $\frac{1}{4}$ -in (6 mm) hem:** sew a row of guide stitching around each shorts leg, using a  $\frac{1}{4}$ -in seam allowance. Turn to WS and press, so that guide stitching is turned just to the inside of the shorts. Turn and press again to WS  $\frac{1}{4}$  in for a doubled narrow hem. Edgestitch hem in place.

## WAISTBAND

**1. Assemble Waistband (5):** pin interfaced waistband (outer waistband) to uninterfaced waistband (inner waistband), RS together. Stitch around the waistband from one short end, along the upper edge, and around the opposite short end, ending at the notch indicated for the overlap. Grade the seam allowances so that the outer waistband's (interfaced) is the widest and the inner waistband's (uninterfaced) is narrower. Clip to seam allowance at overlap notch. Trim away corners and turn waistband RS out, forming neat points.

**2. Understitch waistband:** with inner waistband opened out and the seam allowances underneath, stitch  $\frac{1}{8}$  in (3 mm) from the seamline, catching the seam allowances in the stitching. Turn the inner waistband to the inside and press the edge, rolling the seamline to the inside.

**3. Attach waistband to the shorts:** pin the outer waistband to the shorts at the waistline, RS together, leaving the inner waistband free and matching seams and notches. Stitch. Grade the seam allowances so the shorts' is the narrowest and waistband's is wider. Press seam allowances toward the waistband.

**4. Turn under the inner waistband** seam allowance  $\frac{5}{8}$  in (1.5 cm) and press. Pin in place so that it just covers the waistline seam. Stitch in place by hand using a slipstitch.

## FINISHING

**1. Sew waistband closure:** position bar on waistband underlap and hook on overlap. Stitch in place by hand.

## PATTERN PIECE LOCATION GUIDE

Here is a list to help you locate the expansion pattern pieces on the letter-size tiled pages and AO pattern sheets. The tiled pieces and AO sheets are included as separate pdf files as part of this digital pattern.

PC#	Piece Name	Tiled	AO	PC#	Piece Name	Tiled	AO
1	Shorts Front	1-4, 6-9	1	5	Waistband	16-19, 23	1
2	Pocket	10-11	1	6	Bib	12-15	2
3	Pocket Bag	4-5	1	7	Bib Pocket	14-15	2
4	Shorts Back	20-26	2	8	Romper Bust Foldover	1, 6	1

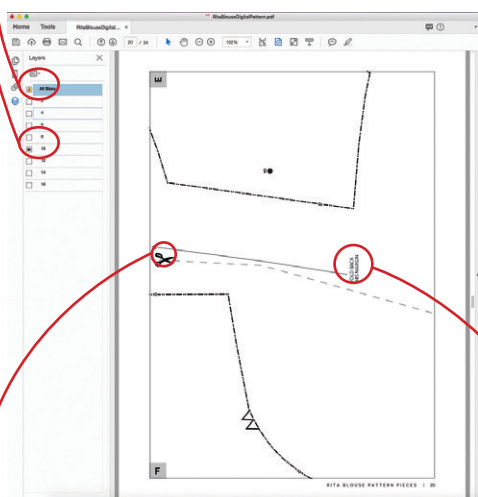
## HOW TO USE THIS PATTERN

The pattern pieces are tiled so you can print them on Letter (8½" x 11") or A4 size paper. You can also send the A0 pattern sheet PDF to a local or online printer (like [www.pdfplotting.com](http://www.pdfplotting.com)) to print on large sheets (36" x 48" for U.S. or A0 for international).

This pattern includes size layers. To get the best results, open either the Tiled or A0 pattern pieces PDF in Acrobat Reader.

Open the Layers Palette (View>Show/Hide>Navigation Panes>Layers) and hide all of the layer(s) except for the ones you want to print by clicking on the eye icon.

The All Sizes layer has general pattern information and will always print.



### WORKING WITH THE TILED PIECES

Go to File>Print and change the page range to the pages you need for the pieces you've chosen (see Pattern Pieces Printing Index). Make sure the Page Sizing settings to 100% or Actual Size. Test this after printing by measuring the 1" test box on the first page of the bodice pattern pieces.

Cut apart any pattern pieces that share a page by cutting on the gray long dashed lines. Then fold back the page margins on each page as directed.

Tape the pages together, butting up the folded page edges with the gray margin lines, matching up the letters in gray boxes.

## MORE FROM GERTIE



Purchase more patterns at [charmpatterns.com](http://charmpatterns.com).