

CHARM
ARTIST
COLLECTIVE



JOAN WIGGLE DRESS

A PATREON EXCLUSIVE PATTERN



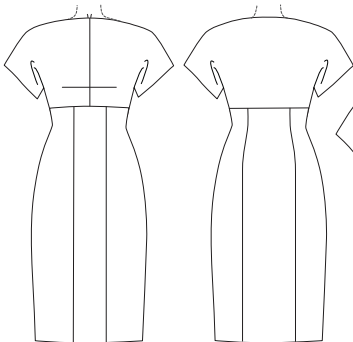
Could this be our curviest, sultriest pattern yet? The Joan Wiggle Dress is the perfect close-fitting sheath dress to channel your inner Ms. Holloway from *Mad Men*—as well as the perfect pattern to launch our new theme, the Charm Artist Collective! This dress is made in a stable knit and would be equally at home at your Madison Avenue office or in a dark jazz club. To really celebrate the new year, we've doubled the options too! Make the slash-neck version in striped ponte knit for an office-appropriate look, or try the plunging sweetheart neckline in a luxurious fabric like stretch velvet or sequins for the ultimate cocktail dress. Not into wiggle dresses? We've included a hip-length cutting line so you can make this into a top to go with jeans, skirts, or trousers! We can't wait to see your versions, however you choose to sew your Joan.

xoxo, *Gertie*

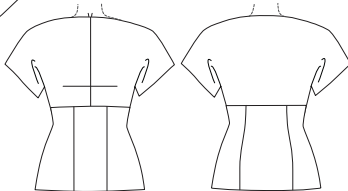
P.S. Don't forget to watch this month's video for tips on stripes and sewing knit fabrics, plus a bonus section on fully lining your dress!



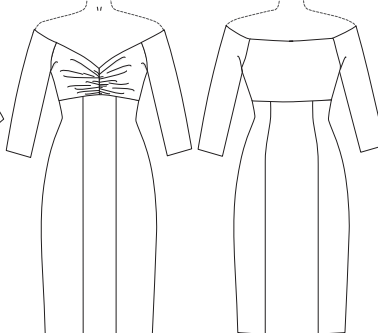
Slash Neck Dress



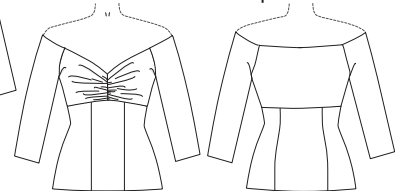
Slash Neck Top



Sweetheart Neckline Dress



Sweetheart Neckline Top



SIZE CHART

The Joan Wiggle Dress is sized in women's US 2–20 and 18–34, with A–C, D–F, and G–H cup size groupings. Please use the chart below to pick your size. The High Bust measurement should be taken above your breasts and the Full Bust measurement should be taken at the fullest part of your bustline. Take the waist measurement at the smallest part of your torso and the hip measurement at the widest part of your hips. Note that it is best to choose your size by your bust measurements (and add or remove from the side seams at the waist if needed).

Not sure which size range to choose? Read more about our [new 18-34 size range here!](#)

SIZES 2-20

	2	4	6	8	10	12	14	16	18	20
High Bust	29 in 73.7 cm	31 in 78.7 cm	33 in 83.8 cm	35 in 88.9 cm	37 in 94 cm	39 in 99 cm	41 in 104.1 cm	43 in 109.2 cm	45 in 114.3 cm	47 in 119.4 cm
Bust A cup	30.5 in 77.5 cm	32.5 in 82.5 cm	34.5 in 87.6 cm	36.5 in 92.7 cm	38.5 in 97.8 cm	40.5 in 102.9 cm	42.5 in 108 cm	44.5 in 113 cm	46.5 in 118.1 cm	48.5 in 123.2 cm
Bust B/C cup	31 in 78.7 cm	33 in 83.8 cm	35 in 88.9 cm	37 in 94 cm	39 in 99 cm	41 in 104.1 cm	43 in 109.2 cm	45 in 114.3 cm	47 in 119.4 cm	49 in 124.5 cm
Bust D/DD cup	32 in 81.3 cm	34 in 86.4 cm	36 in 91.4 cm	38 in 96.5 cm	40 in 101.6 cm	42 in 106.7 cm	44 in 111.8 cm	46 in 116.8 cm	48 in 121.9 cm	50 in 127 cm
Bust F/G cup	33 in 83.8 cm	35 in 88.9 cm	37 in 94 cm	39 in 99 cm	41 in 104.1 cm	43 in 109.2 cm	45 in 114.3 cm	47 in 119.4 cm	49 in 124.5 cm	51 in 129.5 cm
Bust H cup	34 in 86.4 cm	36 in 91.4 cm	38 in 96.5 cm	40 in 101.6 cm	42 in 106.7 cm	44 in 111.8 cm	46 in 116.8 cm	48 in 121.9 cm	50 in 127 cm	52 in 132.1 cm
Waist	24 in 61 cm	26 in 66 cm	28 in 71.1 cm	30 in 76.2 cm	32 in 81.3 cm	34 in 86.4 cm	36 in 91.4 cm	38 in 96.5 cm	40 in 101.6 cm	42 in 106.7 cm
Hips	36 in 91.4 cm	38 in 96.5 cm	40 in 101.6 cm	42 in 106.7 cm	44 in 111.8 cm	46 in 116.8 cm	48 in 121.9 cm	50 in 127 cm	52 in 132.1 cm	54 in 137.2 cm

SIZES 18-34

	18	20	22	24	26	28	30	32	34
High Bust	39.5 in 100.3 cm	41.5 in 105.4 cm	43.5 in 110.5 cm	45.5 in 115.6 cm	47.5 in 120.7 cm	49.5 in 125.7 cm	51.5 in 130.8 cm	53.5 in 135.9 cm	55.5 in 141 cm
Bust A cup	42.5 in 108 cm	44.5 in 113 cm	46.5 in 118.1 cm	48.5 in 123.2 cm	50.5 in 128.3 cm	52.5 in 133.4 cm	54.5 in 138.4 cm	56.5 in 143.5 cm	58.5 in 148.6 cm
Bust B/C cup	43 in 109.2 cm	45 in 114.3 cm	47 in 119.4 cm	49 in 124.5 cm	51 in 129.5 cm	53 in 134.6 cm	55 in 139.7 cm	57 in 144.8 cm	59 in 149.9 cm
Bust D/DD cup	44 in 111.8 cm	46 in 116.8 cm	48 in 121.9 cm	50 in 127 cm	52 in 132.1 cm	54 in 137.2 cm	56 in 142.2 cm	58 in 147.3 cm	60 in 152.4 cm
Bust F/G cup	45 in 114.3 cm	47 in 119.4 cm	49 in 124.5 cm	51 in 129.5 cm	53 in 134.6 cm	55 in 139.7 cm	57 in 144.8 cm	59 in 149.9 cm	61 in 154.9 cm
Bust H cup	46 in 116.8 cm	48 in 121.9 cm	50 in 127 cm	52 in 132.1 cm	54 in 137.2 cm	56 in 142.2 cm	58 in 147.3 cm	60 in 152.4 cm	62 in 157.5 cm
Waist	40 in 101.6 cm	42 in 106.7 cm	44 in 111.8 cm	46 in 116.8 cm	48 in 121.9 cm	50 in 127 cm	52 in 132.1 cm	54 in 137.2 cm	56 in 142.2 cm
Hips	48 in 121.9 cm	50 in 127 cm	52 in 132.1 cm	54 in 137.2 cm	56 in 142.2 cm	58 in 147.3 cm	60 in 152.4 cm	62 in 157.5 cm	64 in 162.6 cm

FIT NOTES

The cup sizing on this design is a little different than our other patterns. Because knits have a very forgiving fit, we have grouped more cup sizes together than usual: A–C, D–F, and G–H. This dress/top has a relatively snug fit and was designed with between ¼ inch (in) negative ease and 3 in positive ease in the bust, ¼ in to ½ in negative ease in the waist, and between 1 in of negative ease and 1 in of positive ease in the hip. The design is meant to be figure skimming. Consult the Finished Measurements Chart below if you need more information to help you pick a size.

MATERIALS & NOTIONS

- Main fabric
- Lining fabric for sweetheart neckline (optional)
- Thread to match your fabric
- Fusible interfacing or roll of 1¼-inch-wide (3 cm) fusible stay tape to stabilize neckline
- ¾-in-wide knit or clear elastic for sweetheart neckline (optional)

RESOURCES

Here are some of the fabrics and supplies I used for the samples and in the video tutorial. There are lots of places to purchase fabric, so this is solely a guide you can use as a reference:

[Fusible Stay Tape](#)

[Pink Stretch Velvet](#)

[Stretch Lining](#)

[Olive Stretch Sequin](#)

[Teal Stretch Velvet](#)

[Red Stretch Velvet](#)

[Striped Ponte De Roma Knit](#)

[Ponte Solid](#)



FABRIC NOTES

We recommend stable knits. Look for fabrics with around 50% stretch in the widthwise grain and zero or very little stretch in the lengthwise grain. (This means that if you take 4 in of relaxed fabric in your hands, it should stretch to around 6 in.)

If you find a fabric that stretches in the lengthwise direction, you will need to modify the cutting layouts in this pattern and orient the pattern pieces so that the stretch goes horizontally around the body. Woven fabrics are not recommended for this pattern. You may use a fabric with more or less stretch, but you may need to adjust the fit of the pattern (stretchier fabrics will result in a looser fit and vice versa).

We recommend ponte, interlock, double knits, stretch velvet, stretch sequins, and wool knits.



PATTERN PIECES

1. Slash Neck Front

Cut 2 fabric

2. Slash Neck Back

Cut 1 fabric on fold

3. Sweetheart Neckline Front

Cut 2 fabric, 2 lining (optional)

4. Sweetheart Neckline Back

Cut 1 fabric on fold,
1 lining on fold (optional)

5. Sleeve (for Sweetheart Neckline)

Cut 2 fabric, 2 lining (optional)

6. Skirt Center Front

Cut 1 fabric on fold

7. Skirt Side Front

Cut 2 fabric

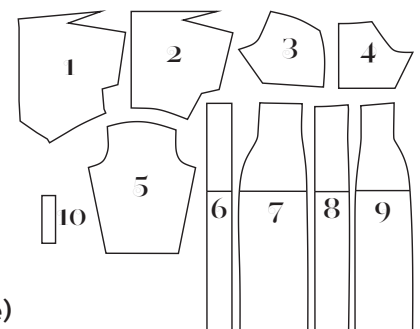
8. Skirt Center Back

Cut 1 fabric on fold

9. Skirt Side Back

Cut 2 fabric

10. Gathering Guide (for Sweetheart Neckline)



FINISHED MEASUREMENTS

Sizes	2-20	2	4	6	8	10	12	14	16	18	20
Slash Neck Variation											
Bust A-C	32 in	34 in	36 in	38 in	40 in	42 in	44 in	46 in	48 in	50 in	
	81.3 cm	86.4 cm	91.4 cm	96.5 cm	101.6 cm	106.7 cm	111.8 cm	116.8 cm	121.9 cm	127 cm	
Bust D-F	32.75 in	34.75 in	36.75 in	38.75 in	40.75 in	42.75 in	44.75 in	46.75 in	48.75 in	50.75 in	
	83.2 cm	88.3 cm	93.3 cm	98.4 cm	103.5 cm	108.6 cm	113.7 cm	118.7 cm	123.8 cm	128.9 cm	
Bust G-H	33.75 in	35.75 in	37.75 in	39.75 in	41.75 in	43.75 in	45.75 in	47.75 in	49.75 in	51.75 in	
	85.7 cm	90.8 cm	95.9 cm	101 cm	106 cm	111.1 cm	116.2 cm	121.3 cm	126.4 cm	131.4 cm	
Sweetheart Neckline Variation											
Bust A-C	31.25 in	33.25 in	35.25 in	37.25 in	39.25 in	41.25 in	43.25 in	45.25 in	47.25 in	49.25 in	
	79.4 cm	84.5 cm	89.5 cm	94.6 cm	99.7 cm	104.8 cm	109.9 cm	114.9 cm	120 cm	125.1 cm	
Bust D-F	32 in	34 in	36 in	38 in	40 in	42 in	44 in	46 in	48 in	50 in	
	81.3 cm	86.4 cm	91.4 cm	96.5 cm	101.6 cm	106.7 cm	111.8 cm	116.8 cm	121.9 cm	127 cm	
Bust G-H	33.75 in	35.75 in	37.75 in	39.75 in	41.75 in	43.75 in	45.75 in	47.75 in	49.75 in	51.75 in	
	85.7 cm	90.8 cm	95.9 cm	101 cm	106 cm	111.1 cm	116.2 cm	121.3 cm	126.4 cm	131.4 cm	
Both variations											
Waist	23.75 in	25.75 in	27.75 in	29.75 in	31.75 in	33.75 in	35.75 in	37.75 in	39.75 in	41.75 in	
	60.3 cm	65.4 cm	70.5 cm	75.6 cm	80.6 cm	85.7 cm	90.8 cm	95.9 cm	101 cm	106 cm	
Hips	37 in	39 in	41 in	43 in	45 in	47 in	49 in	51 in	53 in	55 in	
	94 cm	99.1 cm	104.1 cm	109.2 cm	114.3 cm	119.4 cm	124.5 cm	129.5 cm	134.6 cm	139.7 cm	
Skirt Length	23 in	25 in	27 in	29 in	31 in	33 in	35 in	37 in	39 in	41 in	
	58.4 cm	63.5 cm	68.6 cm	73.7 cm	78.7 cm	83.8 cm	88.9 cm	94 cm	99.1 cm	104.1 cm	
Bicep	12 in	12.5 in	13 in	13.5 in	14 in	14.5 in	15 in	15.5 in	16 in	16.5 in	
	30.5 cm	31.8 cm	33 cm	34.3 cm	35.6 cm	36.8 cm	38.1 cm	39.4 cm	40.6 cm	41.9 cm	

Sizes	18-34	18	20	22	24	26	28	30	32	34
Slash Neck Variation										
Bust A-C	44.75 in	46.75 in	48.75 in	50.75 in	52.75 in	54.75 in	56.75 in	58.75 in	60.75 in	
	113.7 cm	118.7 cm	123.8 cm	128.9 cm	134 cm	139.1 cm	144.1 cm	149.2 cm	154.3 cm	
Bust D-F	45.75 in	47.75 in	49.75 in	51.75 in	53.75 in	55.75 in	57.75 in	59.75 in	61.75 in	
	116.2 cm	121.3 cm	126.4 cm	131.4 cm	136.5 cm	141.6 cm	146.7 cm	151.8 cm	156.8 cm	
Bust G-H	46.75 in	48.75 in	50.75 in	52.75 in	54.75 in	56.75 in	58.75 in	60.75 in	62.75 in	
	118.7 cm	123.8 cm	128.9 cm	134 cm	139.1 cm	144.1 cm	149.2 cm	154.3 cm	159.4 cm	
Sweetheart Neckline Variation										
Bust A-C	45.5 in	47.5 in	49.5 in	51.5 in	53.5 in	55.5 in	57.5 in	59.5 in	61.5 in	
	115.6 cm	120.7 cm	125.7 cm	130.8 cm	135.9 cm	141 cm	146.1 cm	151.1 cm	156.2 cm	
Bust D-F	46.25 in	48.25 in	50.25 in	52.25 in	54.25 in	56.25 in	58.25 in	60.25 in	62.25 in	
	117.5 cm	122.6 cm	127.6 cm	132.7 cm	137.8 cm	142.9 cm	148 cm	153 cm	158.1 cm	
Bust G-H	47 in	49 in	51 in	53 in	55 in	57 in	59 in	61 in	63 in	
	119.4 cm	124.5 cm	129.5 cm	134.6 cm	139.7 cm	144.8 cm	149.9 cm	154.9 cm	160 cm	
Both variations										
Waist	39.5 in	41.5 in	43.5 in	45.5 in	47.5 in	49.5 in	51.5 in	53.5 in	55.5 in	
	100.3 cm	105.4 cm	110.5 cm	115.6 cm	120.7 cm	125.7 cm	130.8 cm	135.9 cm	141 cm	
Hips	49 in	51 in	53 in	55 in	57 in	59 in	61 in	63 in	65 in	
	124.5 cm	129.5 cm	134.6 cm	139.7 cm	144.8 cm	149.9 cm	154.9 cm	160 cm	165.1 cm	
Skirt Length	26.5 in	28.5 in	30.5 in	32.5 in	34.5 in	36.5 in	38.5 in	40.5 in	42.5 in	
	67.3 cm	72.4 cm	77.5 cm	82.6 cm	87.6 cm	92.7 cm	97.8 cm	102.9 cm	108 cm	
Bicep	15.5 in	16 in	16.5 in	17 in	17.5 in	18 in	18.5 in	19 in	19.5 in	
	39.4 cm	40.6 cm	41.9 cm	43.2 cm	44.5 cm	45.7 cm	47 cm	48.3 cm	49.5 cm	

REQUIRED YARDAGE & CUTTING LAYOUTS

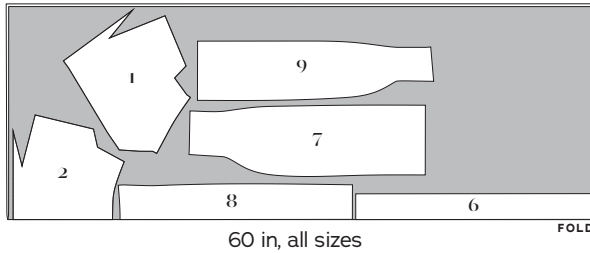
SIZES 2-20

Note: All pattern pieces are shown in a “without nap” layout. You may need additional yardage for directional prints, stripes, plaids, and other prints that need to be matched across seamlines.

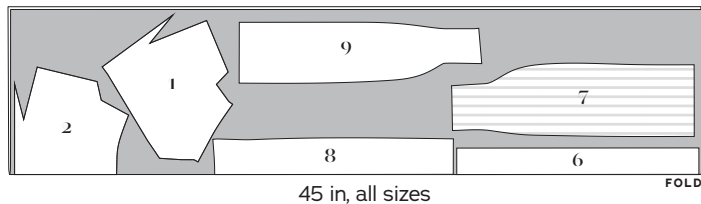
Slash Neck Dress

(1, 2, 6, 7, 8, 9)

	Sizes 2-10	Sizes 12-20
45 in	2 ³ / ₄ yds 2.5 m	3 yds 2.7 m
60 in	2 ³ / ₈ yds 2.2 m	2 ¹ / ₂ yds 2.3 m



60 in, all sizes

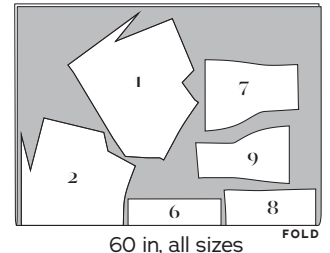


45 in, all sizes

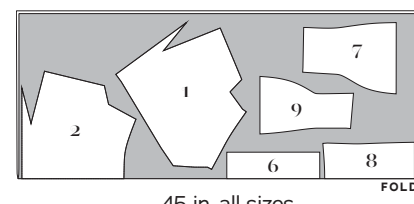
Slash Neck Top

(1, 2, 6, 7, 8, 9)

	Sizes 2-10	Sizes 12-20
45 in	1 ⁵ / ₈ yds 1.5 m	1 ³ / ₄ yds 1.6 m
60 in	1 ¹ / ₄ yds 1.1 m	1 ³ / ₈ yds 1.3 m



60 in, all sizes

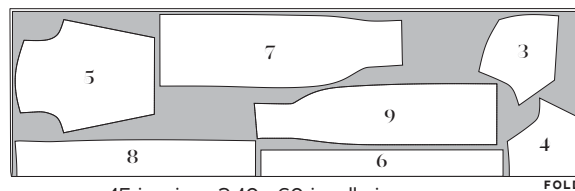


45 in, all sizes

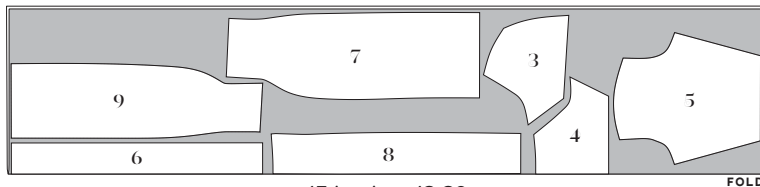
Sweetheart Neckline Dress

(3, 4, 5, 6, 7, 8, 9)

	Sizes 2-10	Sizes 12-20
45 in	2 ¹ / ₄ yds 2.1 m	3 yds 2.7 m
60 in	2 ¹ / ₄ yds 2.1 m	2 ³ / ₈ yds 2.2 m



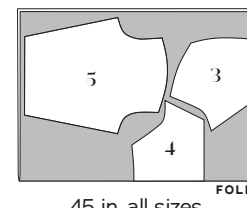
45 in, sizes 2-10 • 60 in, all sizes



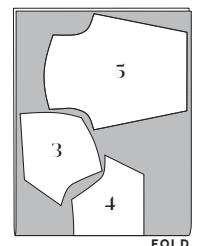
45 in, sizes 12-20

Optional Lining (3, 4, 5)

	Sizes 2-10	Sizes 12-20
45 in	1 yd 0.9 m	1 ¹ / ₈ yds 1 m
60 in	3 ³ / ₄ yd 0.7 m	1 yd 0.9 m



45 in, all sizes

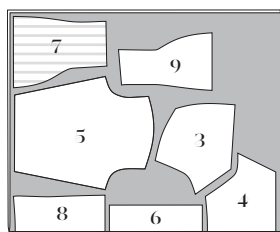


60 in, all sizes

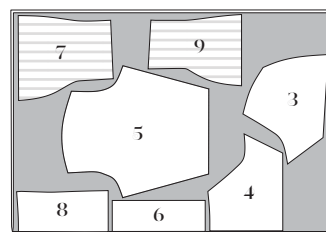
Sweetheart Neckline Top

(3, 4, 5, 6, 7, 8, 9)

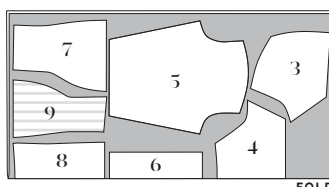
	Sizes 2-10	Sizes 12-20
45 in	1 ³ / ₈ yds 1.3 m	1 ³ / ₄ yds 1.6 m
60 in	1 ¹ / ₈ yds 1 m	1 ³ / ₈ yds 1.3 m



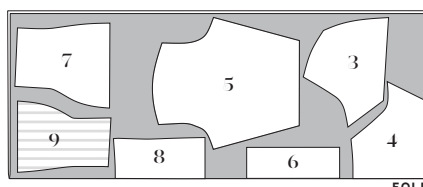
60 in, sizes 2-10



60 in, sizes 12-20




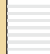
45 in, sizes 2-10



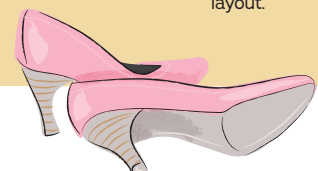
45 in, sizes 12-20

KEY TO LAYOUTS

 Right side of pattern piece

 Wrong side of pattern piece

Be sure to note whether the pieces are cut on a double or single layer of fabric. For a double layer, there will be a note indicating FOLD on the layout.



REQUIRED YARDAGE & CUTTING LAYOUTS

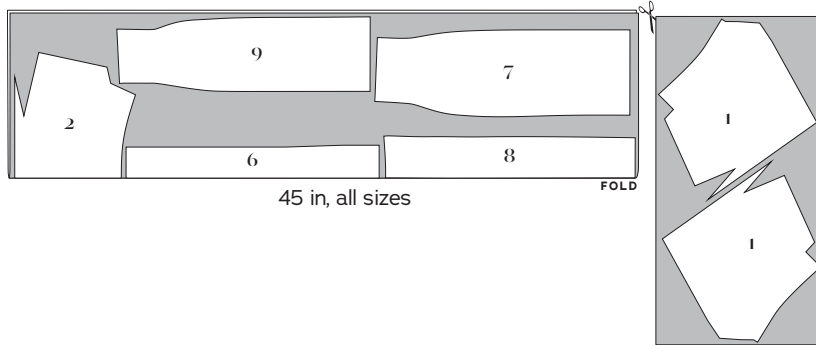
SIZES 18-34

Note: All pattern pieces are shown in a “without nap” layout. You may need additional yardage for directional prints, stripes, plaids, and other prints that need to be matched across seamlines.

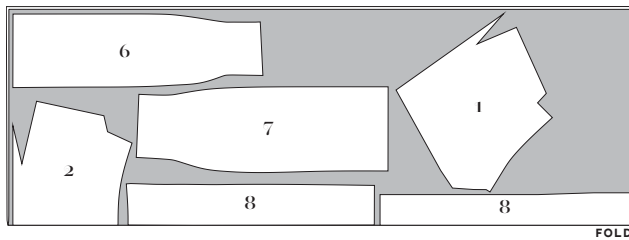
Slash Neck Dress

(1, 2, 6, 7, 8, 9)

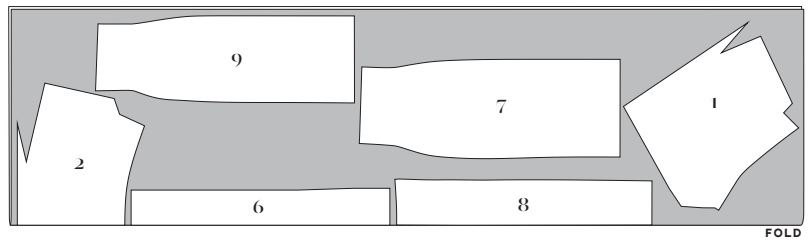
	Sizes 18-24	Sizes 26-34
45 in	3 1/8 yds 2.9 m	3 1/2 yds 3.2 m
60 in	2 1/2 yds 2.3 m	3 3/8 yds 2.9 m



In this layout, the fabric is first folded to cut all pieces except 1, and then the fabric is opened up to cut piece 1 twice.



60 in, sizes 18-24

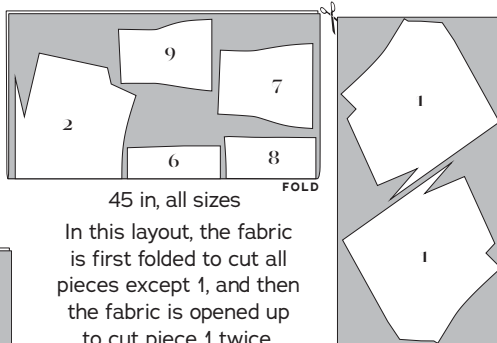


60 in, sizes 26-34

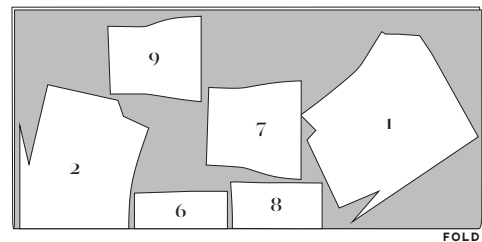
Slash Neck Top

(1, 2, 6, 7, 8, 9)

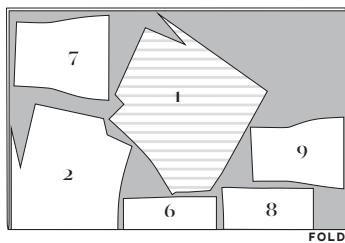
	Sizes 18-24	Sizes 26-34
45 in	1 7/8 yds 1.7 m	2 1/8 yds 2 m
60 in	1 3/8 yds 1.3 m	1 7/8 yds 1.7 m



In this layout, the fabric is first folded to cut all pieces except 1, and then the fabric is opened up to cut piece 1 twice.


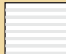


60 in, sizes 26-34



60 in, sizes 18-24

KEY TO LAYOUTS

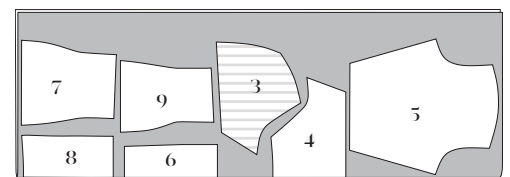
-  Right side of pattern piece
-  Wrong side of pattern piece

Be sure to note whether the pieces are cut on a double or single layer of fabric. For a double-layer, there will be a note indicating FOLD on the layout.

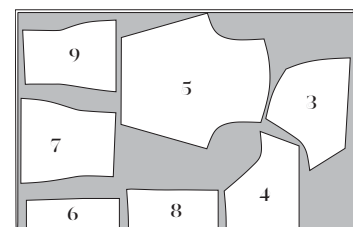
Sweetheart Neckline Top

(3, 4, 5, 6, 7, 8, 9)

	Sizes 18-24	Sizes 26-34
45 in	2 yds 1.8 m	2 yds 1.8 m
60 in	1 3/8 yds 1.3 m	1 1/2 yds 1.4 m



45 in, all sizes



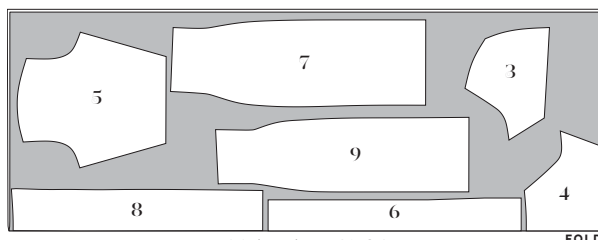
60 in, all sizes

Sweetheart

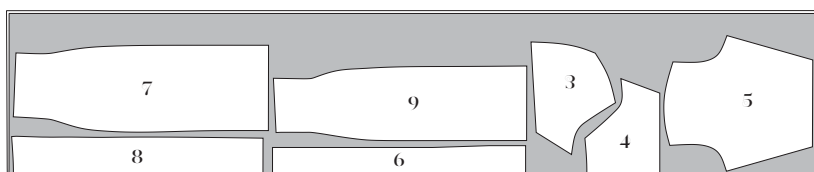
Neckline Dress

(3, 4, 5, 6, 7, 8, 9)

	Sizes 18-24	Sizes 26-34
45 in	3 1/8 yds 2.9 m	3 1/4 yds 3 m
60 in	2 3/8 yds 2.2 m	3 1/8 yds 2.9 m



60 in, sizes 18-24

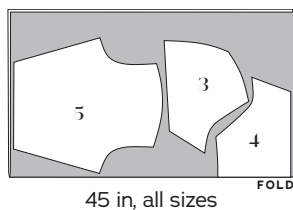


45 in, all sizes • 60 in, sizes 26-34

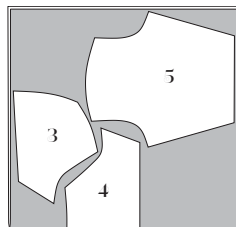
REQUIRED YARDAGE & CUTTING LAYOUTS SIZES 18-34 (CONT'D)

Optional Lining (3, 4, 5)

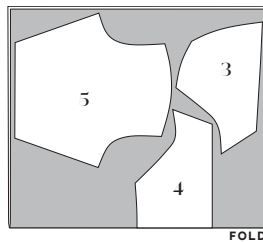
	Sizes 18-24	Sizes 26-34
45 in	1¼ yds 1.1 m	1¼ yds 1.1 m
60 in	1 yd 0.9 m	1⅞ yds 1 m



45 in, all sizes



60 in, sizes 18-24



60 in, sizes 26-34

SEWING INSTRUCTIONS

BEFORE SEWING

Transferring marks: Use dressmaker's tracing paper and a tracing wheel to transfer all pattern markings to the wrong side (WS) of your fabric. Mark pattern notches by snipping into the seam allowance with the tip of your scissors.

Seam Finishing: Knits typically do not fray, so seam finishing is optional.

NOTES

- 5/8-inch (in) (1.5 cm) seam allowances are included on all pattern pieces, except where otherwise noted.
- Use a ballpoint or jersey needle to avoid skipped stitches.
- Use a narrow zigzag stitch on seams and hems to provide some stretch (about 1.5 mm wide by 2.5 mm long).
- For the top version, cut skirt pieces at hip cutting line and follow directions for skirt.
- It is also possible to line the skirt if you prefer a fully lined dress. Please refer to the end of this month's video to see how!

SEW THE JOAN WIGGLE DRESS/TOP

If sewing a sweetheart neckline, skip to Sweetheart Bodice.

Slash Neck Bodice

1. Stabilize cut-on facing on Slash Neck Fronts (1) and Slash Neck Back (2) pieces: apply 1¼-in-wide (3 cm) strips of fusible interfacing to the top of the slash neck fronts and slash neck back pieces.

2. Sew darts in slash neck front: bring dart legs right sides (RS) together, pinning along marked lines. Stitch along marked lines from edge of fabric to dart point. Backstitch at the beginning and leave thread tails a few inches long at the dart point. Tie thread tails in a knot. Trim dart to 5/8 in and press dart open.

3. Sew the center front seam on slash neck front: pin the slash neck fronts RS together and stitch the center front seam from waistline to neckline. Backstitch. Press seam allowances open.

4. Pin slash neck front unit to slash neck back, RS together, at shoulder and cut-on facing neckline. Mark the seamlines on shoulder and facing (see video for tips!). Stitch starting at shoulder seam, pivoting at cut-on facing corner, following marked seam line. Clip to pivot point. Press seam allowances open. Turn cut on facing 1¼-in to the WS of the bodice neckline. (**NOTE:** The height of the neckline is a personal fit choice. You may turn under the cut on facing more or less at center front, according to your liking.) Topstitch 1 in from the fold with a narrow zigzag stitch or hand-stitch in place to secure, pivoting at shoulder seams. (It may be helpful to mark the 1-in topstitching line before stitching.)

5. Sew side seams: pin slash neck front unit to slash neck back, RS together, at side seams. Stitch, pivoting at underarm. Clip into underarm seam allowance at pivot point. Press seam allowances open.

Proceed to Skirt.

Sweetheart Bodice

1. Gather center front of sweetheart neckline: sew two lines of gathering stitches within seam allowance, starting and ending at circle marks on Sweetheart

Neckline Front (3) pieces. Place first line of gathering stitches $\frac{1}{2}$ in (1.3 cm) from raw edge and second line of gathering stitches $\frac{1}{4}$ in (6 mm) from raw edge. Pull up bobbin threads to gather to the length of the Gathering Guide (10) piece.

2. Sew center front seam on sweetheart neckline

front: pin sweetheart neckline fronts RS together at center front. Stitch the center front seam, starting at lower edge and stopping at neckline circle mark. Backstitch. Press seam allowances open.

3. Assemble bodice: pin sweetheart neckline front unit to Sweetheart Neckline Back (4), RS together, at side seams. Stitch. Press seam allowances open.

4. Sew sleeves: pin sleeves at underarm seams, RS together. Stitch. Press seam allowances open.

5. Set sleeves into bodice: pin each sleeve to bodice armhole, RS together, matching notches. Stitch.

6. Finish underarm seam: Trim seam allowances as one to about $\frac{3}{8}$ in (1 cm), then finish seams if desired. If serging, trim and finish simultaneously.

For an unlined bodice, proceed to next step.

To line your bodice, proceed to Lined Bodice.

7. Stabilize and finish sweetheart neckline: apply $\frac{1}{4}$ -in-wide (3 cm) strips of fusible interfacing to neckline. Fold and press the neckline edge under $\frac{5}{8}$ in (1.5 cm). Stitch $\frac{1}{2}$ in (1.3 cm) from the fold using a narrow zigzag stitch.

Lined Sweetheart Bodice

1. Repeat steps 1 - 6 from the Sweetheart Bodice section with your lining pieces.

2. Sew the lining to sweetheart bodice: pin lining to bodice, RS together at neckline, matching seams. Stitch around the neckline, starting and ending at the center front sweetheart point, lifting up seam allowances to stitch exactly to center front.

3. Sew elastic to neckline: with bodice layers still RS together as in last step, sew length of $\frac{3}{8}$ -in-wide elastic to neckline with lining side up, placing elastic just next to the seamline. Stitch elastic in place, stitching on edge of elastic, stretching slightly as you stitch. Begin and end stitching at center front, lifting

up center front seam allowances to stitch elastic underneath seam allowances (the elastic will not be joined at center front). (**NOTE:** there is no need to pin elastic, have it loosely next to garment as you are stitching, placing elastic as you go.) If desired, trim seam allowances behind elastic to reduce bulk.

4. Understitch the neckline: from the RS, with the lining opened out from the bodice and the seam allowances underneath the lining, stitch $\frac{1}{8}$ in (3 mm) from the seamline, catching the seam allowances and elastic in the stitching. Turn the lining to the inside of the bodice, pushing sleeve lining into sleeves. Press neckline edge, rolling the seamline to the inside. Baste edges of bodice and lining together at lower edge and sleeve hems using a zigzag stitch.

Skirt (For all views)

For top version, follow skirt instructions, hemming at hip-length cutting line.

1. Sew skirt front: pin Skirt Side Fronts (7) to Skirt Center Front (6), RS together, matching notches. Stitch. Press seam allowances open.

2. Sew skirt back: pin Skirt Side Backs (9) to Skirt Center Back (8), RS together, matching notches. Stitch. Press seam allowances open.

3. Assemble skirt: pin skirt front unit to skirt back unit, RS together, at side seams. Stitch. Press seam allowances open.

4. Attach bodice to skirt: pin bodice to skirt, RS together, matching notches and side seams. Stitch. Trim seam allowances as one to about $\frac{3}{8}$ in (1 cm), then finish seams as desired. If serging, trim and finish simultaneously. Press seam allowances toward bodice.

Hem

1. Hem top/dress: fold and press the bottom edge under $\frac{5}{8}$ in (1.5 cm). Stitch $\frac{1}{2}$ in (1.3 cm) from the fold using a narrow zigzag stitch.

2. Hem sleeves: fold and press the bottom sleeve edge under $\frac{5}{8}$ in (1.5 cm). (For lined sweetheart version, you will fold the basted sleeve and sleeve lining together as one.) Stitch $\frac{1}{2}$ in (1.3 cm) from the fold using a narrow zigzag stitch.

Enjoy your fabulous new Joan Wiggle Dress!

PATTERN PIECE LOCATION GUIDE

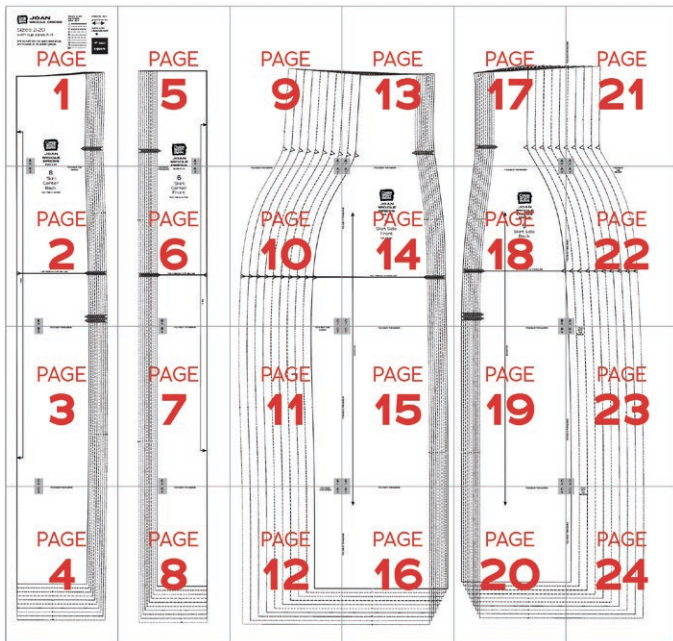
Here is a list to help you locate the pattern pieces on the letter-size tiled pages and A0 pattern sheets.
The tiled pieces and A0 sheets are included as separate pdf files as part of this digital pattern.

PC#	Piece Name	SIZES 2-20		SIZES 18-34	
		Tiled	A0	Tiled	A0
1	Slash Neck Front, A-C Cup	25-30	1	25-30	1
1	Slash Neck Front, D-F Cup	31-36	1	37-44	3
1	Slash Neck Front, G-H Cup	37-42	2	43-50	2
2	Slash Neck Back	43-48	2	31-36	2
3	Sweetheart Neckline Front, A-C Cup	49-50, 54	1	51-53, 55-56	2
3	Sweetheart Neckline Front, D-F Cup	53-54, 57-58	1	52-53, 55-57	3
3	Sweetheart Neckline Front, G-H Cup	51-52, 55-56	1	53-54, 57-58	1
4	Sweetheart Neckline Back	55-56, 59-60	3	60-62, 65-66	2
5	Sleeve (for Sweetheart Neckline)	57-59, 61-63	2	59-61, 63-69	1
6	Skirt Center Front	5-8	2	5-8	3
7	Skirt Side Front	9-16	3	6-16	4
8	Skirt Center Back	1-4	3	1-4	3
9	Skirt Side Back	17-24	3	17-24	4
10	Gathering Guide (for Sweetheart Neckline)	60	1	59	3

TILING MAPS

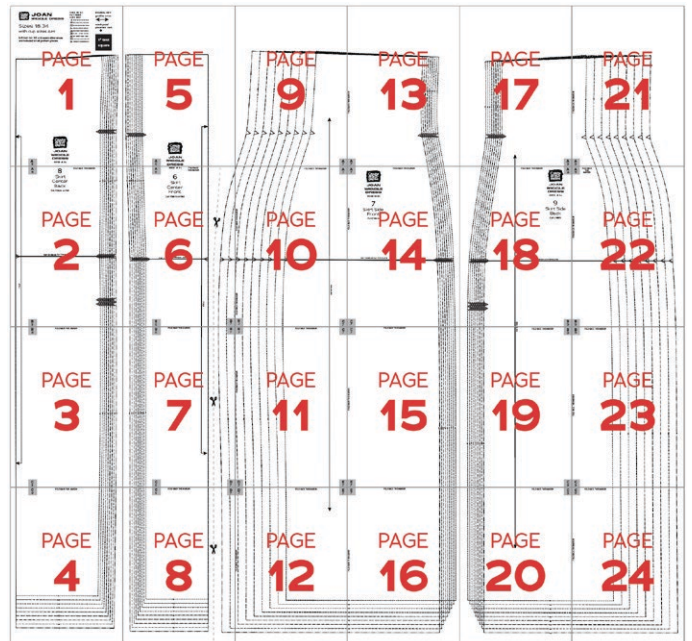
SIZES 2-20

SKIRT



SIZES 18-34

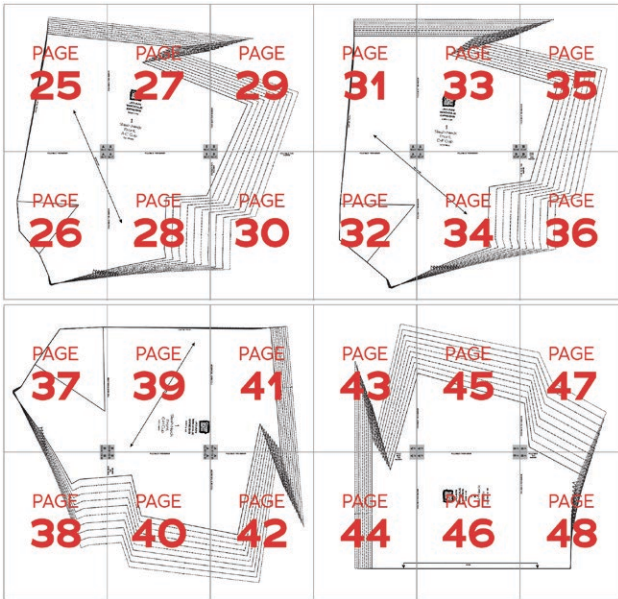
SKIRT



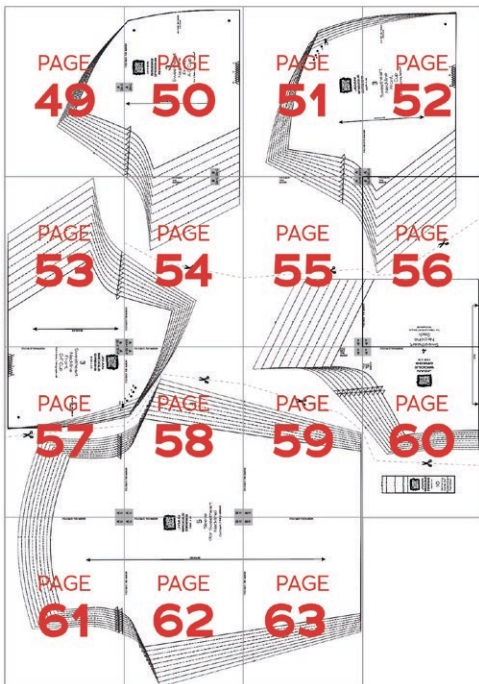
TILING MAPS (CONT'D)

SIZES 2-20

SLASH NECKLINE, CUPS A-H AND BACK

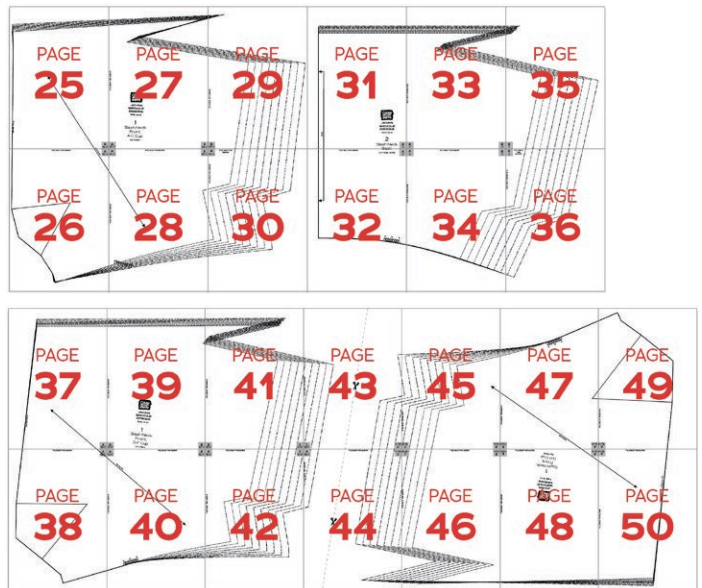


SWEETHEART NECKLINE, CUPS A-H GATHERING GUIDE AND SLEEVE

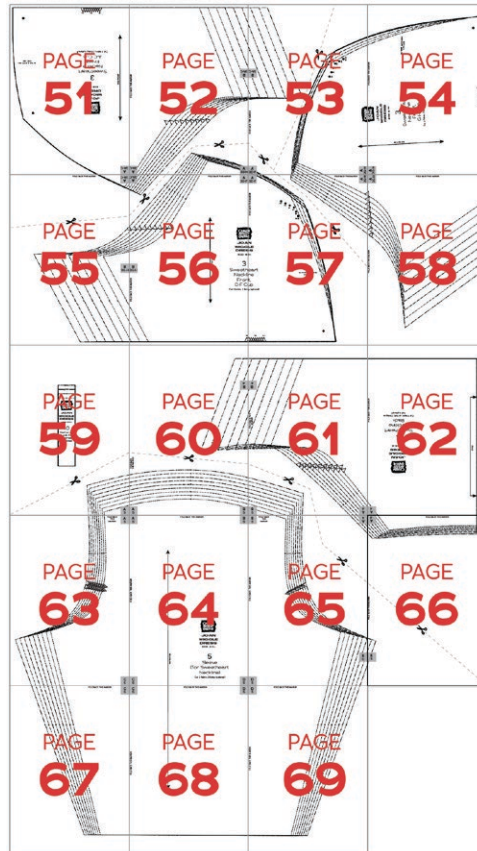


SIZES 18-34

SLASH NECKLINE, CUPS A-H AND BACK



SWEETHEART NECKLINE, CUPS A-H GATHERING GUIDE AND SLEEVE



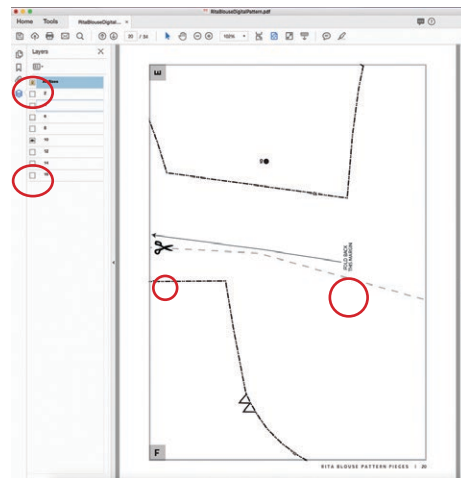
HOW TO USE THIS PATTERN

The pattern pieces are tiled so you can print them on Letter (8 1/2" x 11") or A4 size paper. You can also send the A0 pattern sheet PDF to a local or online printer (like www.pdfplotting.com) to print on large sheets (36" x 48" for U.S. or A0 for international).

This pattern includes size layers. To get the best results, open either the Tiled or A0 pattern pieces PDF in Acrobat Reader.

Open the Layers Palette (View>Show/Hide>Navigation Panes>Layers) and hide all of the layer(s) except for the ones you want to print by clicking on the eye icon.

The All Sizes layer has general pattern information and will always print.



WORKING WITH THE TILED PIECES

Go to File>Print and change the page range to the pages you need for the pieces you've chosen (see Pattern Pieces Printing Index). Make sure the Page Sizing settings to 100% or Actual Size. Test this after printing by measuring the 1" test box on the first page of the bodice pattern pieces.

Cut apart any pattern pieces that share a page by cutting on the gray long dashed lines. Then fold back the page margins on each page as directed.

Tape the pages together, butting up the folded page edges with the gray margin lines, matching up the letters in gray boxes.

MORE FROM GERTIE

[On Instagram:](#) Stay in the loop and get inspired.

[On YouTube:](#) Learn beginner and advanced sewing skills and techniques through my tutorials, watch episodes of my Gertie's World series, and join regular live streams.

[On Patreon:](#) Access monthly patterns and tutorial videos.

[At CharmPatterns.com:](#) Shop my sewing patterns and accessories.

