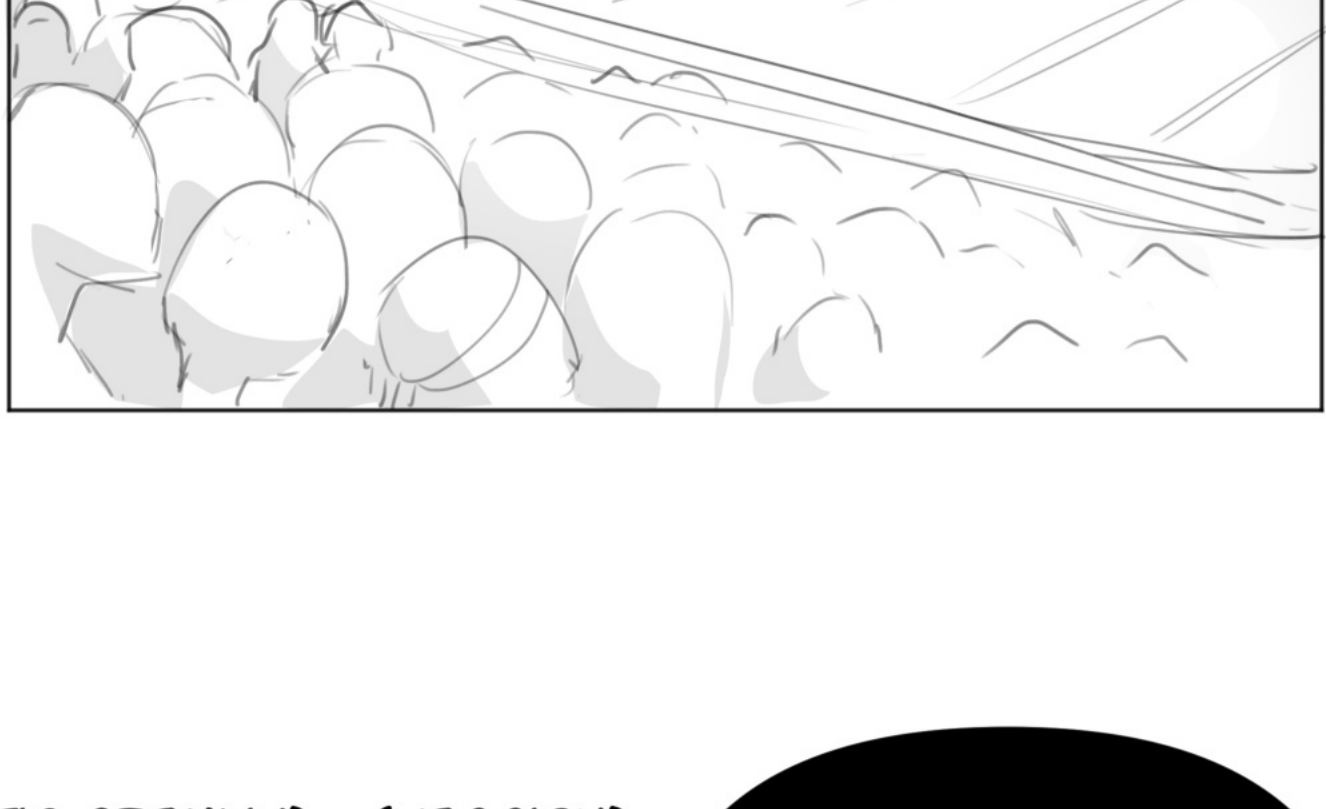


DON'T
LOOK
At THE
SKYY

Q&A!



WE ARE STARTING THE FIRST Q&A OF DON'T LOOK AT THE SKY. PLEASE ONE AT A TIME...



(CATTIC GREMLIN) (VEGGIOH)

-HOW DID THE IDEA FOR THIS COMIC COME ABOUT?

THE IDEA OF A HORNED GIRL AND A HUMAN CAME UP A LONG TIME AGO. I WAS WITHOUT A LAPTOP OR PC AND DREW ON MY CELL PHONE (THE CONCEPTS CAME BEFORE THE STORY). AT THE TIME, I WANTED TO SHOW A NEW SPECIES HAVING DIFFICULTIES ADAPTING ON EARTH.



MY FOLLOWERS ON INSTAGRAM (WHERE I WAS VERY ACTIVE AT THE TIME) ENCOURAGED ME TO PRODUCE MORE BESIDES THE COMIC STRIPS I USED TO DO, SO I STARTED TO MAKE THE STORY AROUND THE TWO OF THEM.



BUT THE STARTING POINT WAS WHEN I PARTICIPATED IN A CONTEST IN MY COUNTRY, AND I WAS AMONG THE FIRST PLACES



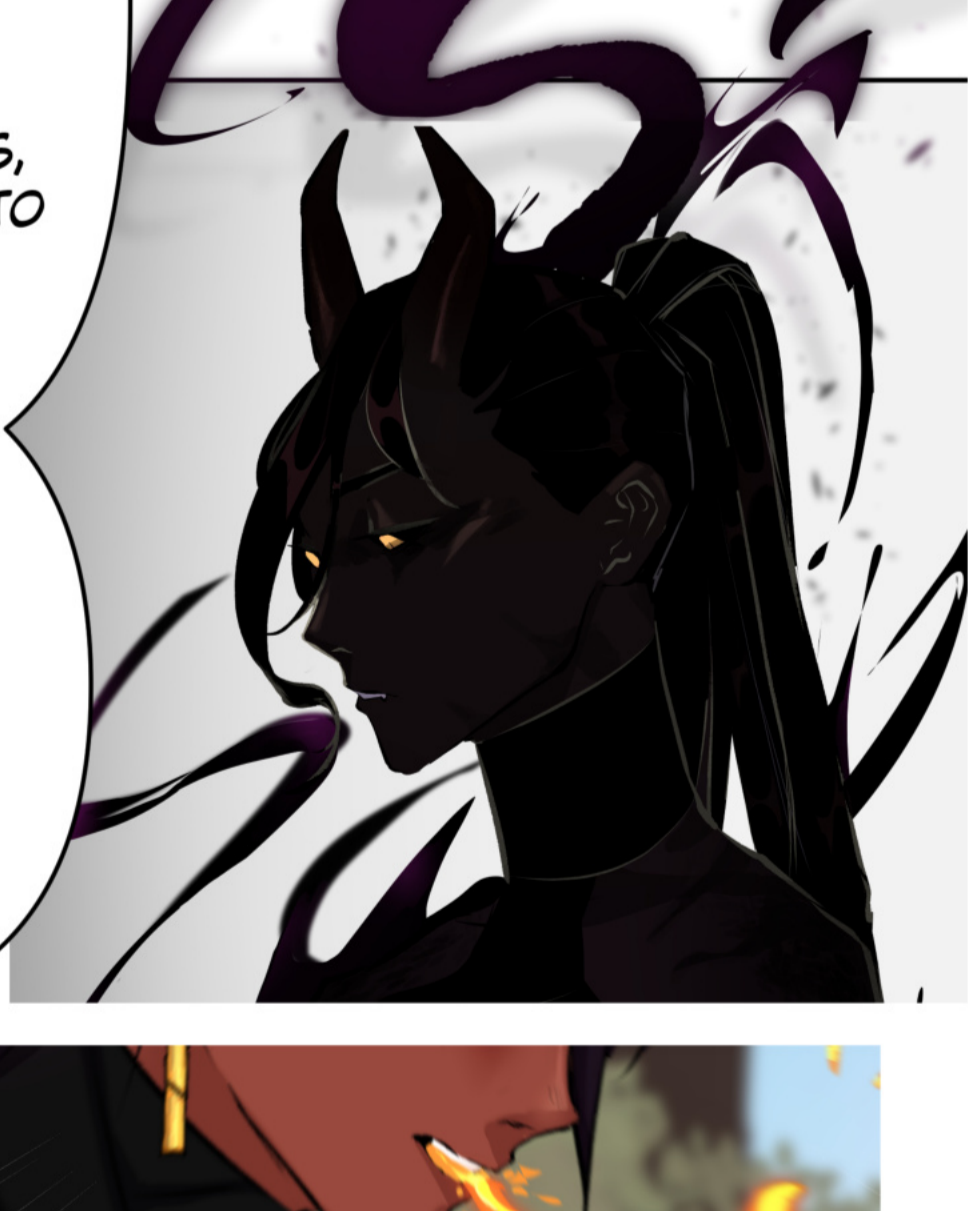
THAT'S WHEN I THOUGHT: "YEAH, I CAN DO THIS, AND IT'S TIME TO START DON'T LOOK AT THE SKY."

-WHY DID YOU CHOOSE THE ELEMENT FIRE FOR WANGARI AND NOT OTHER?

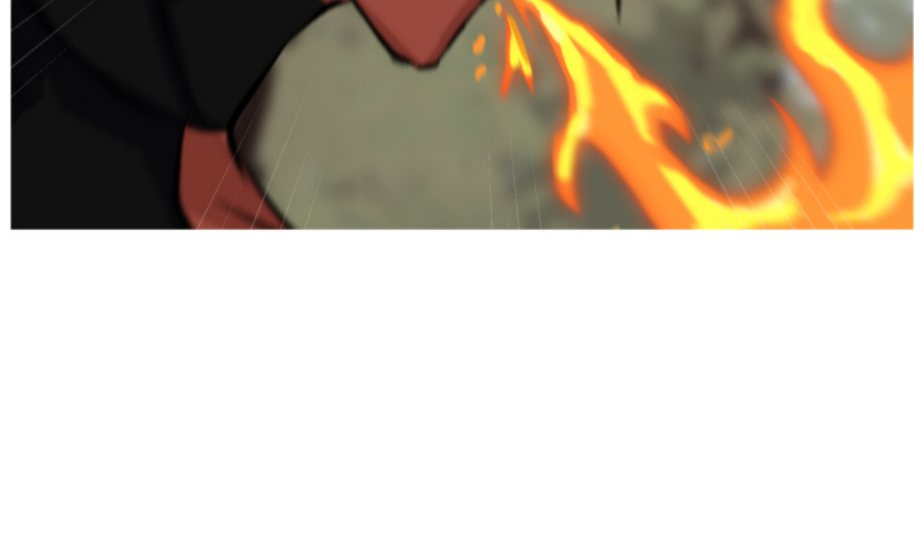
(ZAIRA)



GOOD QUESTION, WELL... I THINK FIRE SUITS HER, SHE CAN BE QUITE INTENSE SOMETIMES, AND I LIKE TO DRAW FLAMES.



BY THE WAY, WANGARI DOESN'T HAVE ONLY ONE ELEMENT.



-ARE THE VERY AMAZING CHARACTERS BASED OFF OF ANYONE, JUST SOME ASPECTS OF A DIFFERENT CHARACTER, OR ARE THEY COMPLETELY ORIGINAL CHARACTERS? PHENOMENAL WORK BY THE WAY IT'S AMAZING!

(WELP.....)

THANK YOU FOR LIKING MY WORK (WELP.....)

I OFTEN HEAR THAT WANGARI LOOKS LIKE ME. I DON'T REALLY THINK THAT WE LOOK ALIKE, BUT HER PERSONALITY IS QUITE SIMILAR TO MINE. I CAN BE QUITE EXPLOSIVE AT TIMES, AND SOMETIMES I DO THINGS WITHOUT THINKING.

I AM GETTING BETTER AT THIS. HELENA IS ALSO BASED ON SOMEONE ELSE, SHE IS VERY HELPFUL, ALWAYS CONCERNED, AND ALMOST ALWAYS PUTS THE WILL OF OTHERS ABOVE HER OWN.

--- IS THIS GOING TO BE A SLOW BURN? ALSO HOW LONG HAVE YOU BEEN DOING ART AND WHEN DID YOU DECIDE YOU WANTED TO MAKE A COMIC? I ABSOLUTELY LOVE THIS SERIES AND I CAN'T WAIT TO SEE HOW THE CHARACTERS AND PLOT PROGRESS

(GHXSTPIXIE)

I STILL CAN'T TELL IF IT WILL BE SLOW BURN.

I ALWAYS LIKED COMICS AND ANIMATION (MORE ANIMATION) AT FIRST I DECIDED TO MAKE COMICS TO TRAIN GESTURE, AND COMPOSITION, IN SHORT, TO IMPROVE MY ART TECHNIQUES

IN EPISODE 5, YOU MENTIONED HOW YOU WERE ADAPTING AND EXPERIMENTING WITH YOUR ART STYLE, THUS WHY THE COMIC STYLE HAD CHANGED. WHAT INSPIRED/ENCOURAGED YOU TO CHANGE THINGS UP? KEEP UP THE GREAT WORK, BY THE WAY! (RASPBERRY YOGURT)

THANK YOU (RASPBERRY YOGURT) WELL, I LIKE TO MAKE BEAUTIFUL AND PRACTICAL THINGS, SAVING TIME IS VERY IMPORTANT TO ME. I REALIZED THAT I COULD IMPROVE A LOT OF THINGS BY RESEARCHING OTHER ARTISTS WHO MAKE WEBTOON, COMICS, AND MANHWA. AND THEN I STARTED TO ADAPT.

-WHEN THEY EVENTUALLY END UP TOGETHER, WILL THE STORY GO ON, OR IS THIS ONE THAT'S LIKELY TO END ONCE THAT HAPPENS? IS THERE FOR BONUS EPILOGUES? (DAUGHTER OF HEL)

-ARE THEY GOING TO GET TOGETHER? (AUGUST1234GJ)

THE STORY IS VERY COMPLEX, IT HAS 5 ARCS, AND THE FIRST ONE HASN'T EVEN STARTED YET. SO THEY WILL END TOGETHER BEFORE THE STORY ENDS.

BUT A LOT IS STILL GOING TO HAPPEN. IF I AM NOT TOO TIRED BY THEN, I WILL FOR SURE MAKE A BONUS EPILOGUE.

-IS YOUR STORY AN OLD IDEA OR IS IT "NEW" ? AND WILL IT BE A LONG STORY ? (CAMBRE-ALLEGRA)

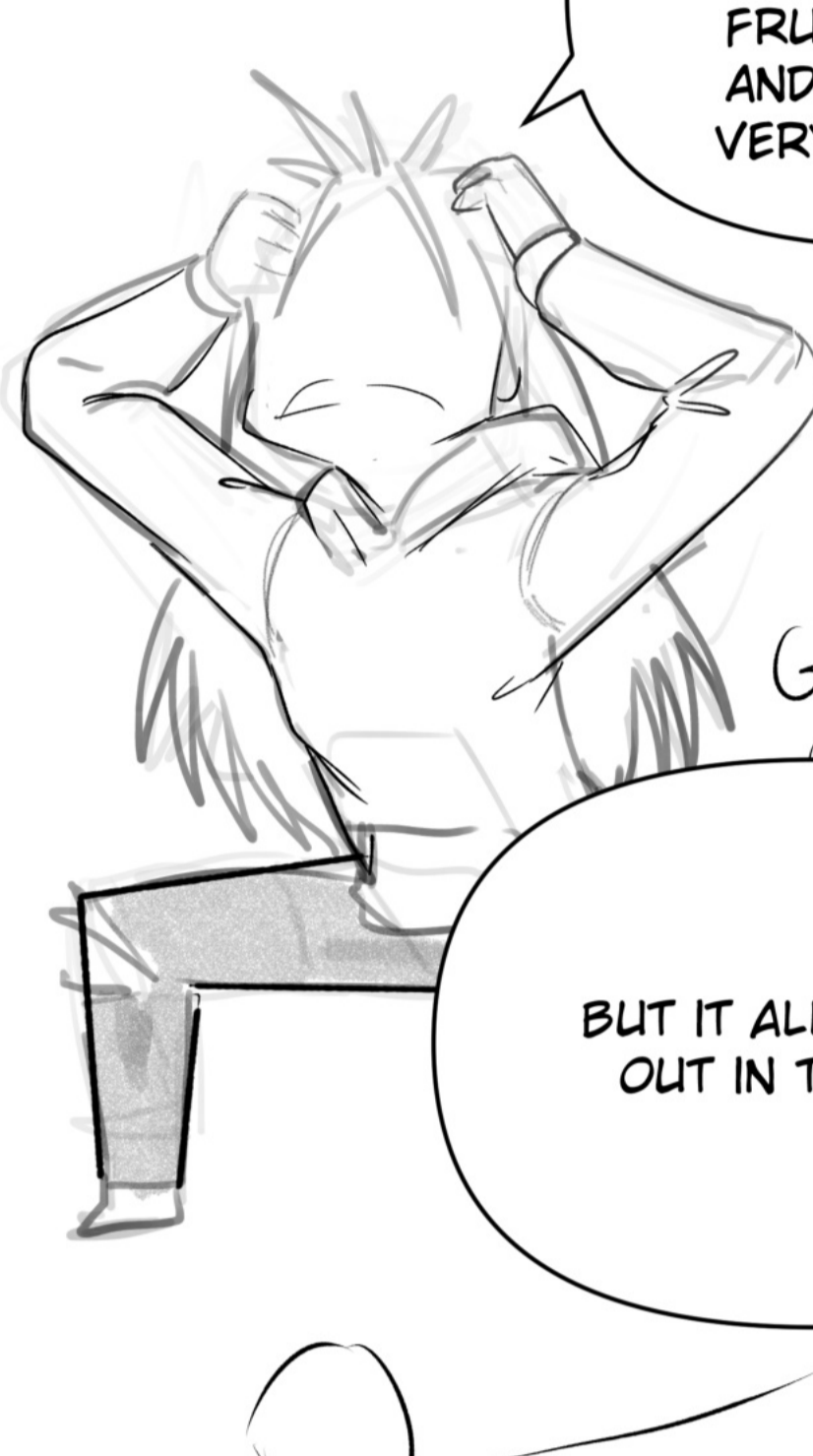
I CONSIDER IT A NEW IDEA, BUT I HAVE BEEN PRODUCING THE WEBTOON FOR A YEAR NOW,

AND IT IS DEFINITELY A LONG STORY.

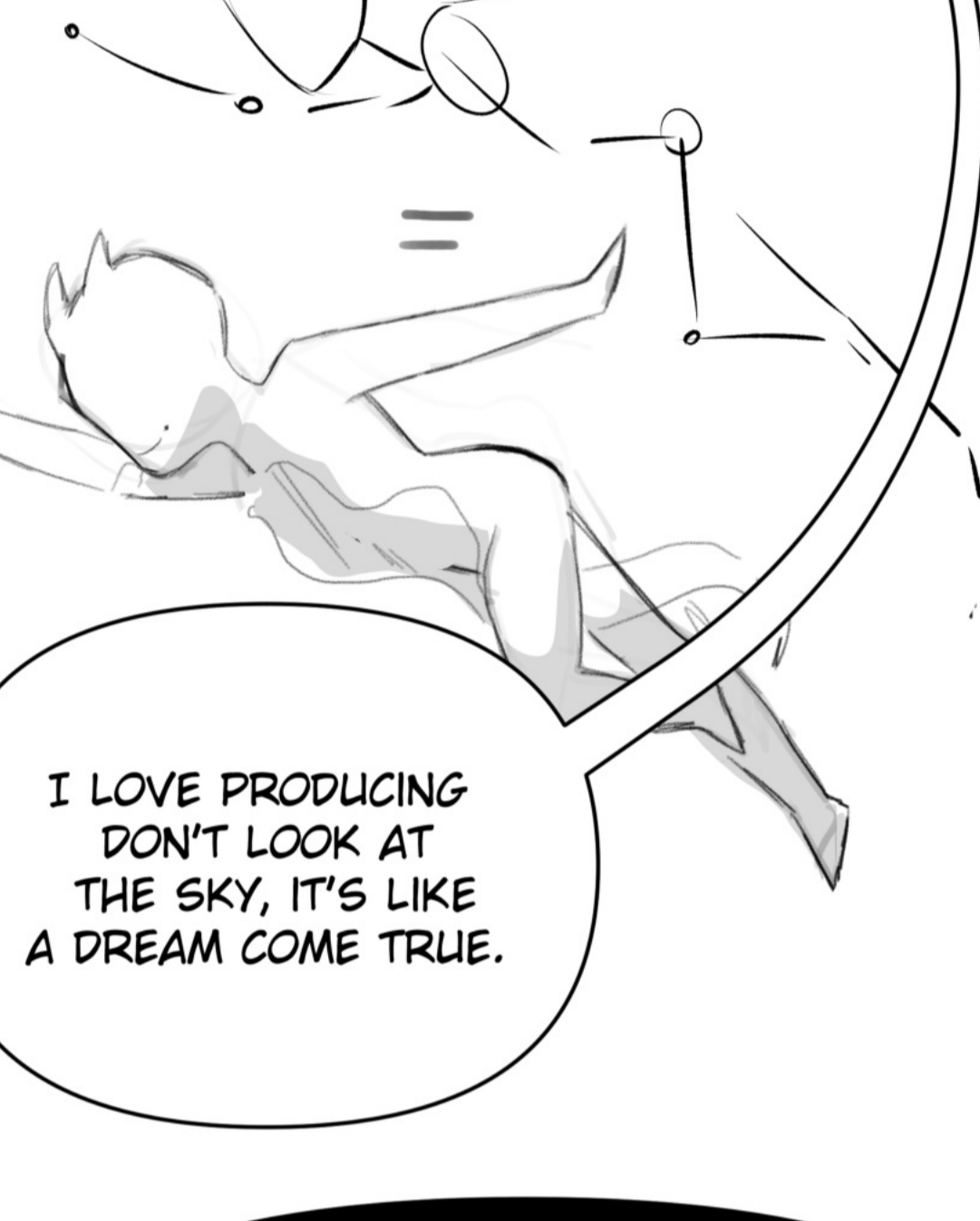
-HOW WAS IT MAKING THE WORLD OF "DON'T LOOK AT THE SKY"? (FAIENLUCIFER)

HAVE YOU BEEN ENJOYING CREATING SUCH A WONDER TALE SO FAR? (V.I.I.)

IT'S HALF WONDERFUL AND HALF VERY FRUSTRATING. AND IT'S ALSO VERY DIFFICULT.



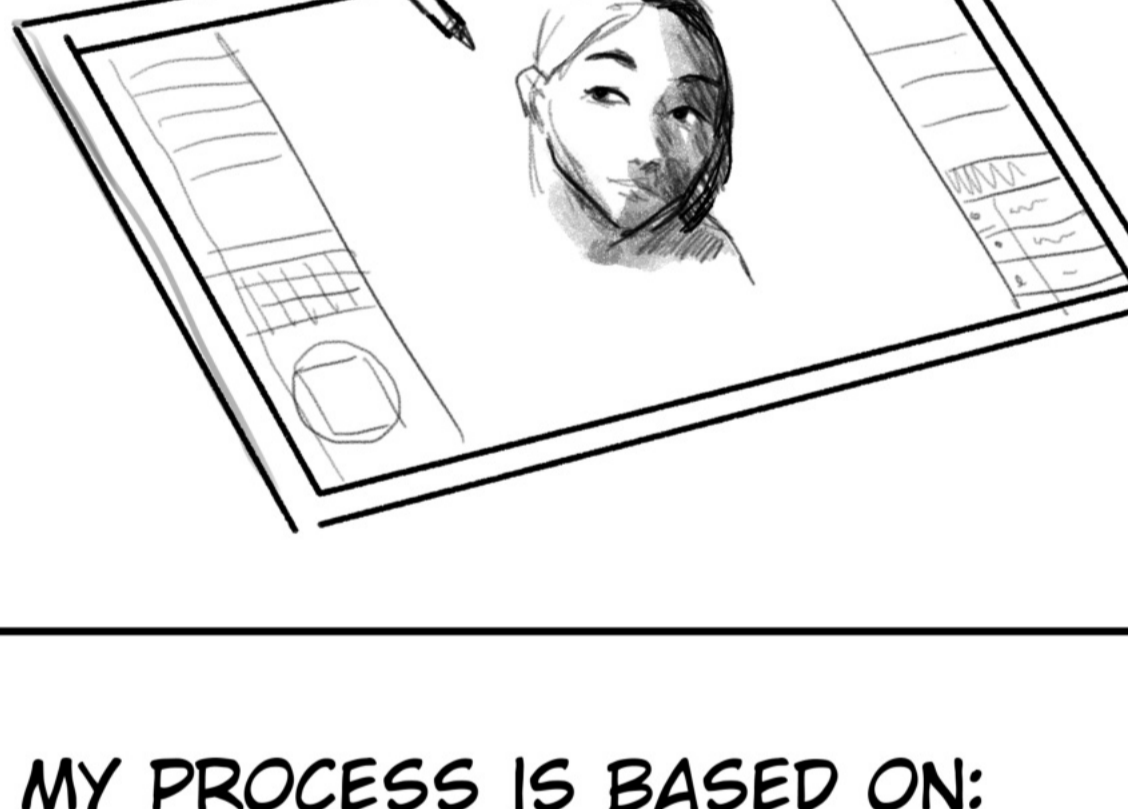
BUT IT ALL WORKS OUT IN THE END.



I LOVE PRODUCING DON'T LOOK AT THE SKY, IT'S LIKE A DREAM COME TRUE.

WHAT IS THE NEW ARRIVING DEVICE THAT IS GONNA HELP YOU? :O ALSO WHAT IS YOUR CREATIVE PROCESS WHEN YOU DRAW AND WHICH TOOLS DO YOU USE? I ABSOLUTELY LOVE THE STORY AND THE ART! CAN'T WAIT TO SEE MORE OF THEM (ENVIWIE)

I USE A TABLET AND MY NEW DEVICE IS AN INTERACTIVE DISPLAY, IT IS NOT HERE YET, BUT I AM VERY EXCITED.



MY PROCESS IS BASED ON:

SCRIPT > STORYBOARD > SCENE COMPOSITION. UP TO THIS POINT, MY PROCESS IS PURELY CREATIVE.

AFTER THE CREATIVE PART, THERE IS ONLY THE ART PRODUCTION PART.

SKETCH > LINEART > COLOR SHAPES > SHADOWS > HIGHLIGHTS > SCENE PAINTING. > SPEECH BALLOONS > FX AND SFX > EXPORT > POSTING.

IT IS A VERY MECHANICAL PROCESS, WHICH MAKES IT EASIER, BUT IT IS REPETITIVE WORK. SOMETIMES I HAVE TO STOP AND DO SOMETHING ELSE.



I USE SEVERAL BRUSHES TO HELP ME, IT IS A VERY LONG TOPIC TO COMMENT ON HERE.

IS THERE ANY CONCEPT ART OF THE CHARACTERS BEFORE YOU SETTLED ON WHAT THEY LOOK LIKE NOW? (O46479)

YES.

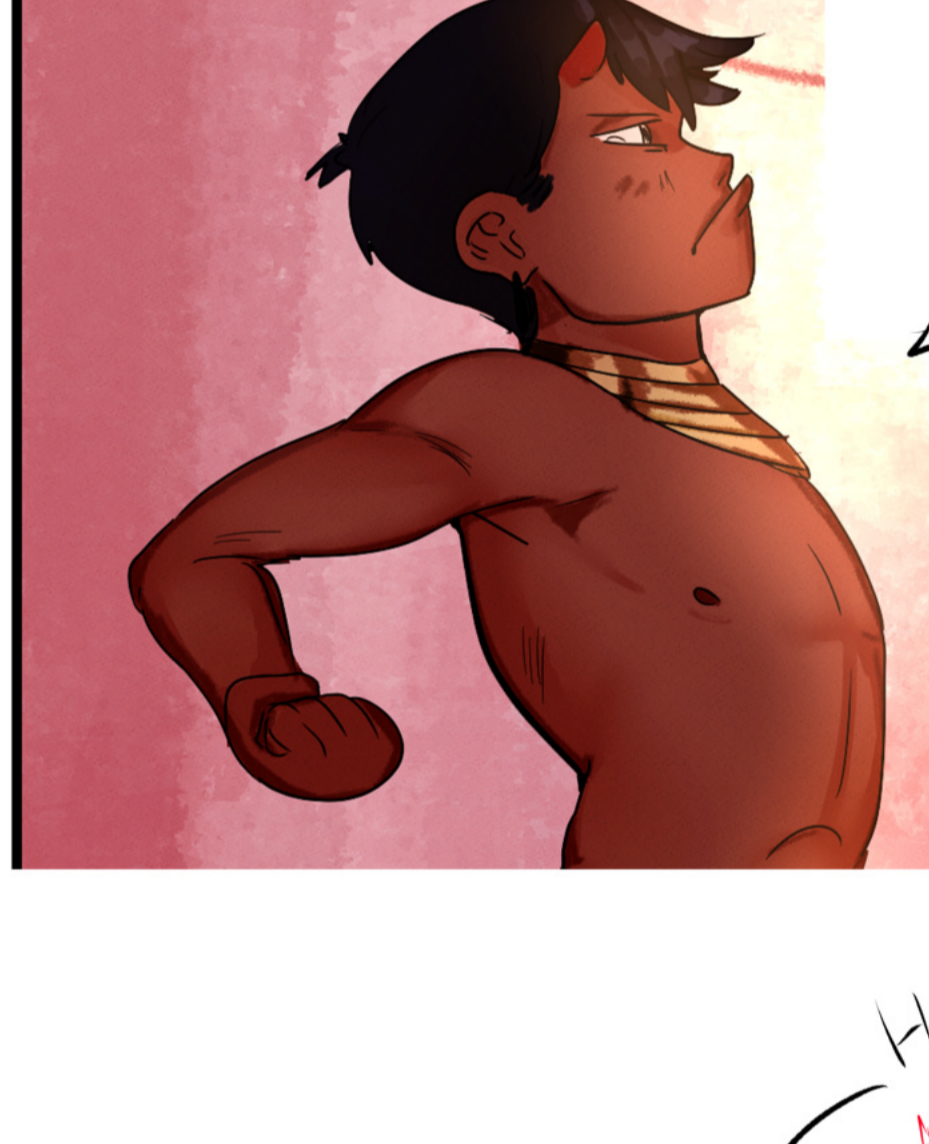
Você exagera sabia?

HUM...





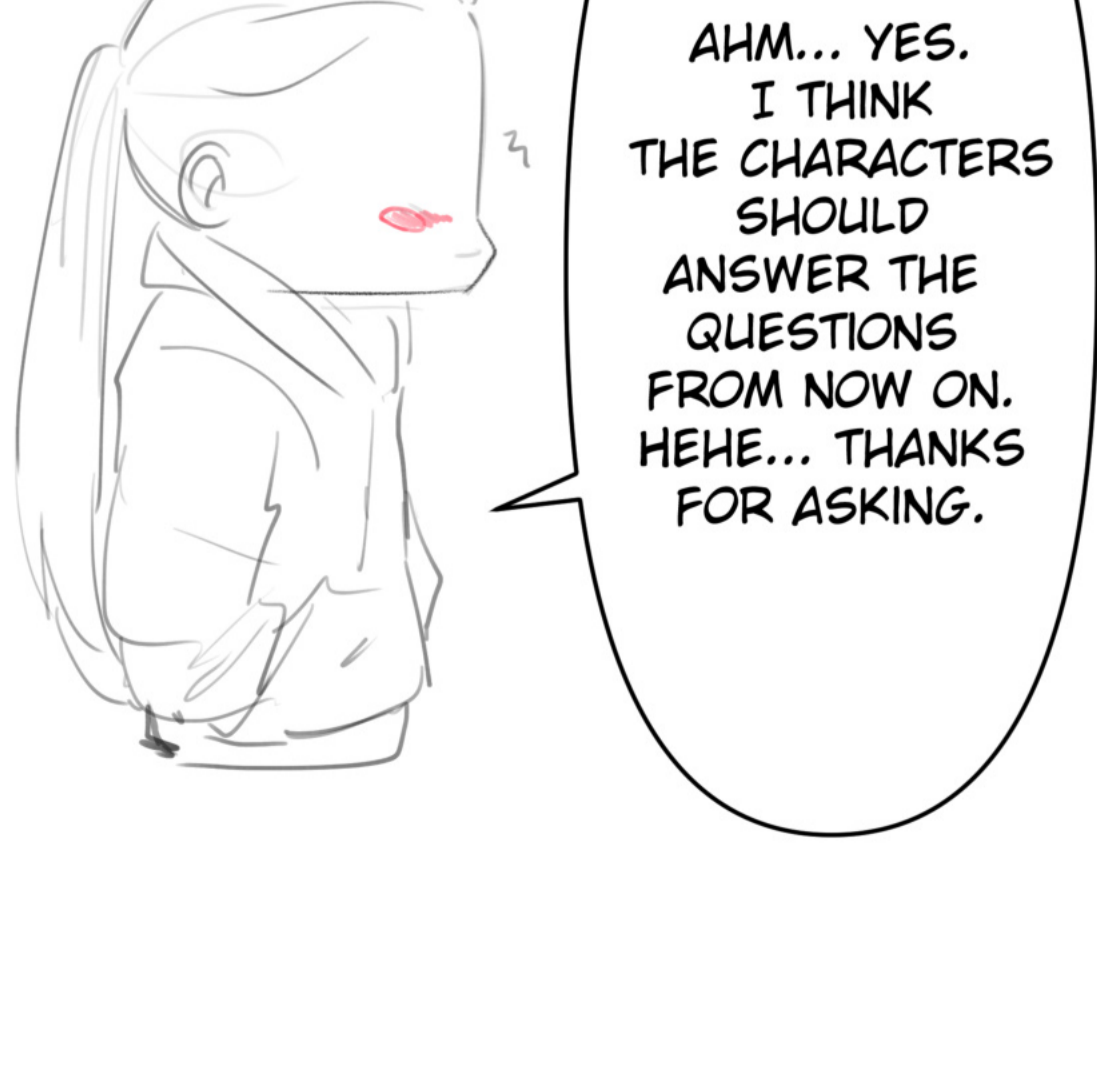
Wangari



KAE

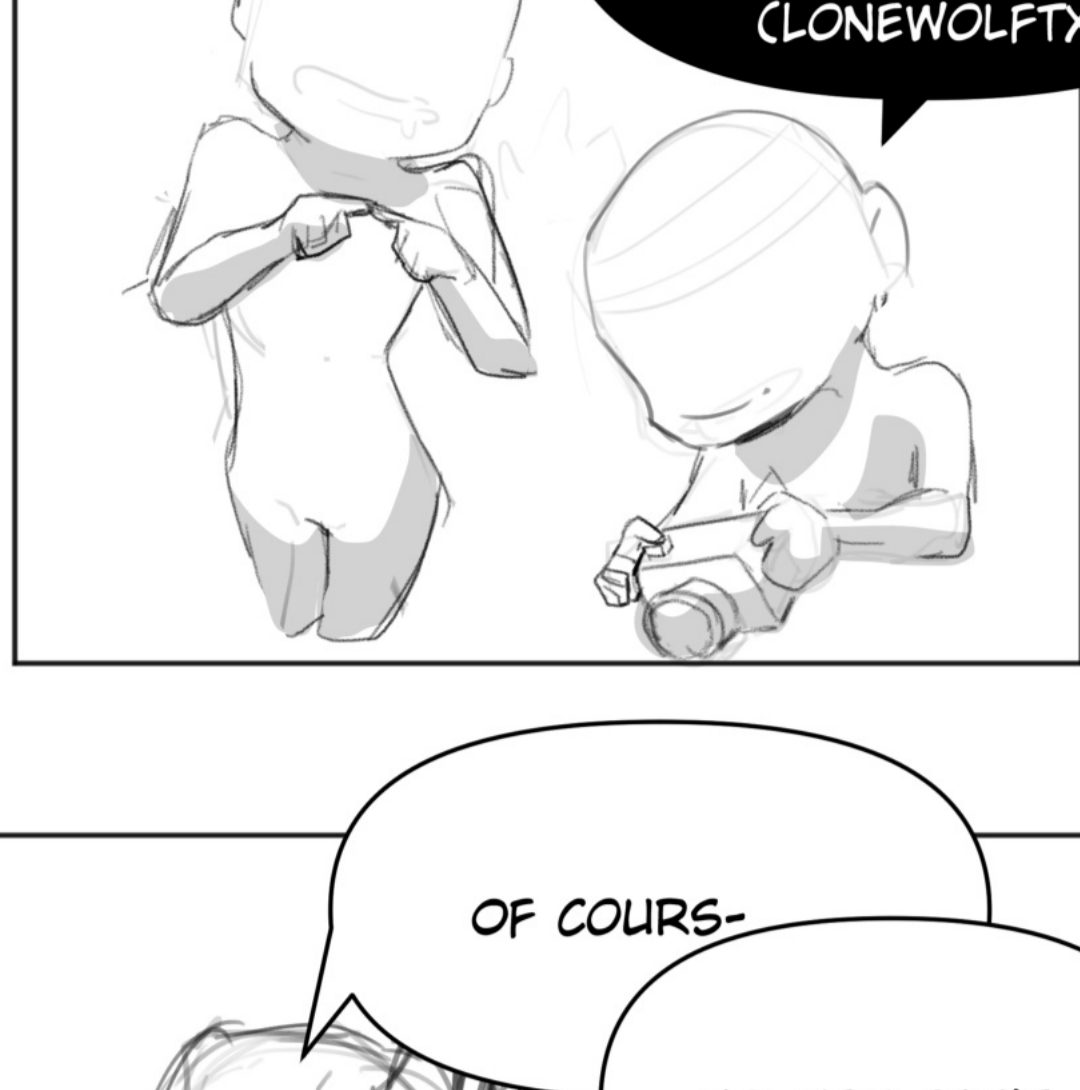


HELENA?



-CAN I HUG HER ABS? IT WOULD BE GREATLY APPRECIATED. (NOBODYBUTAPERSON)

-CAN WE GET A NICE CLOSE LOOK AT HER ABS FOR RESEARCH OFC (CLONEWOLFTX)



OF COURSE-

NO, YOU CAN'T.



-WILL WANGARI EVER TAKE A HUMAN FORMATION? (GABRIEL JONES)

TSSSS... I DON'T KNOW. MEGAN?



THIS IDIOT BROKE THE POTION ON THE TRIP.



-IS HELENAS HAIR NATURALLY PINK OR DID SHE DYE IT? (MISA.!))

THAT'S A FUNNY QUESTION... HEHE.

IT IS A FULL OXYGENATED PINK.



WHAT?



-CAN U DRAW WANGARI AS A HUMAN AND PINKIE AS A DRACONIAN (._NYNY._)

-IM CURIOUS TO SEE WANGARI AND HELENA AS SWITCHED SPECIES. (BLUEBIRDIE.)



-COULD YOU ASK THEM WHAT THEIR SPIRIT ANIMALS ARE? (MINES A SNAIL) ALSO YOUR ART IS AMAZING BTW (JEN/10740 ☐ |)



WELL, I DID A QUIZ AND AN OWL CAME OUT. =

A DEER...



-COME ON I MEAN I HAVE THE MOST CLASSIC QUESTION WHO'S TOP AND WHO'S BOTTOM...FOR BUNK BEDS OF COURSE (°~°TOTALLYHUMAN°~°.)

THAT'S AN EASY ONE, WANGARI IS UNDERNEATH IN THE BUNK.

-ARE THERE ANY HUMANS IN WANGARI'S WORLD OR ARE THEY ONLY NATIVE THE EARTH ? IF IT'S THE LATER HOW DO DRACONIANS KNOW ABOUT THEM? (NIKOΣ)

DRACONIANS AND MAGES KNOW ABOUT HUMANS, BUT THERE ARE NONE IN ARIAM-HOD. ARIAM-HOD IS NOT CONDUCTIVE TO HUMAN LIFE.

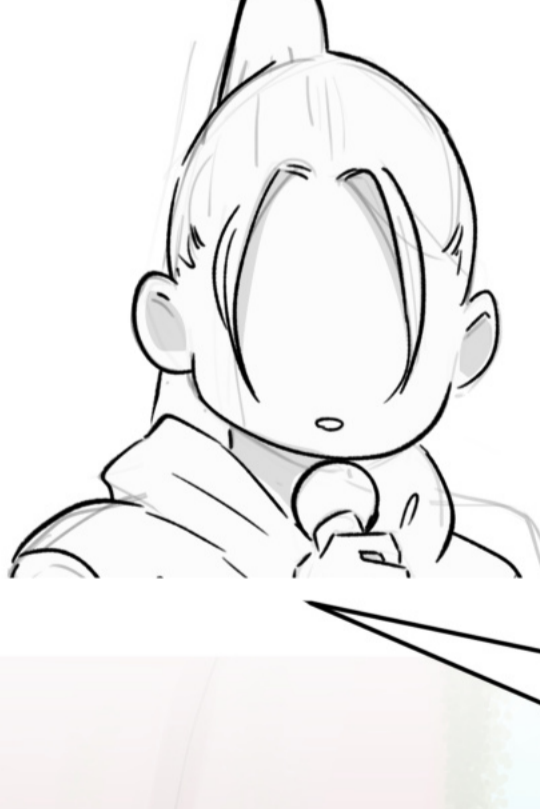


-WHAT ARE WANGARI AND HELENA'S FAVORITE AND LEAST FAVORITE THINGS ABOUT EACH OTHER? AND HOW ARE YOU DOING, ARTEMIZ? (NINI_THE_PANINI)

I LIKE WHEN WANGARI SHOWS HER CUTE SIDE, THAT'S THE PART I LIKE MOST ABOUT HER.



I LIKE HELENA'S NAIVETY, IT CREATES SOME PROBLEMS, BUT IT'S THE BEST PART OF HER. THE PART THAT BELIEVES ON PEOPLE.



THANKS, I'M FINE, HOW ARE YOU?

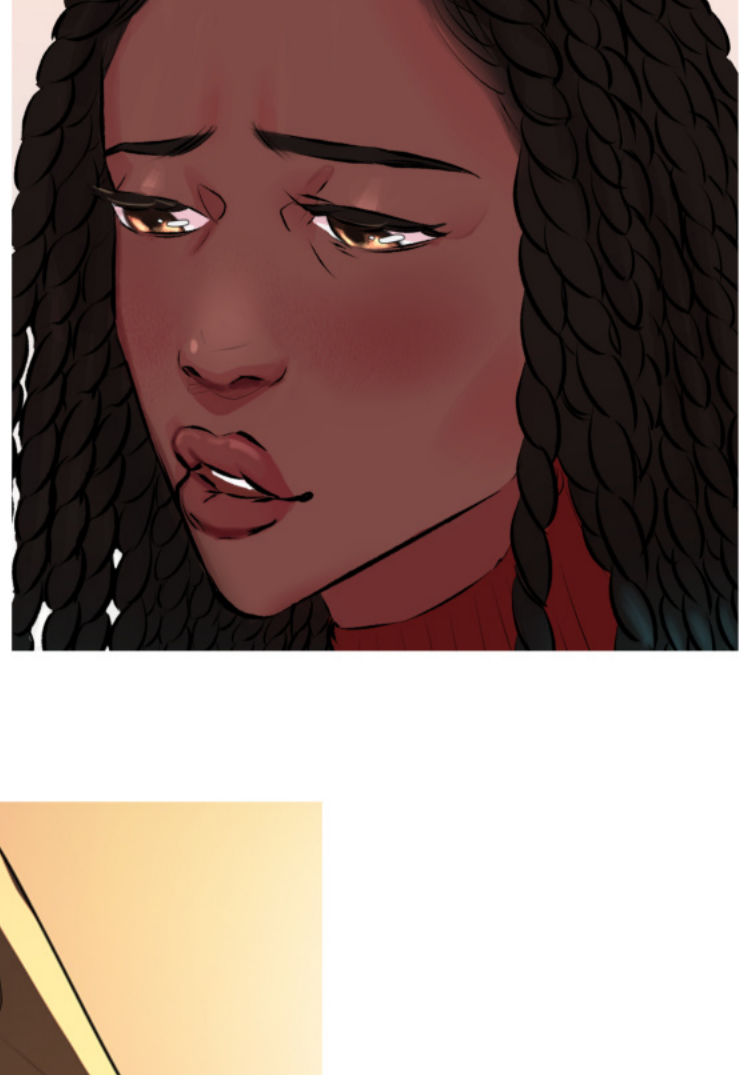
-CAN I ASK IF THE TITLE HAS A SORT OF MEANING IN THE WEBCOMIC? OR WHY IT'S NAMED AS IT IS? (☐○☐☐ ☐ |)

YES, THE TITLE HAS A MEANING AND IT HASN'T BEEN FULLY EXPLAINED YET, BUT IN THE PROLOGUE, THERE IS A MENTION OF THAT EXPLANATION.

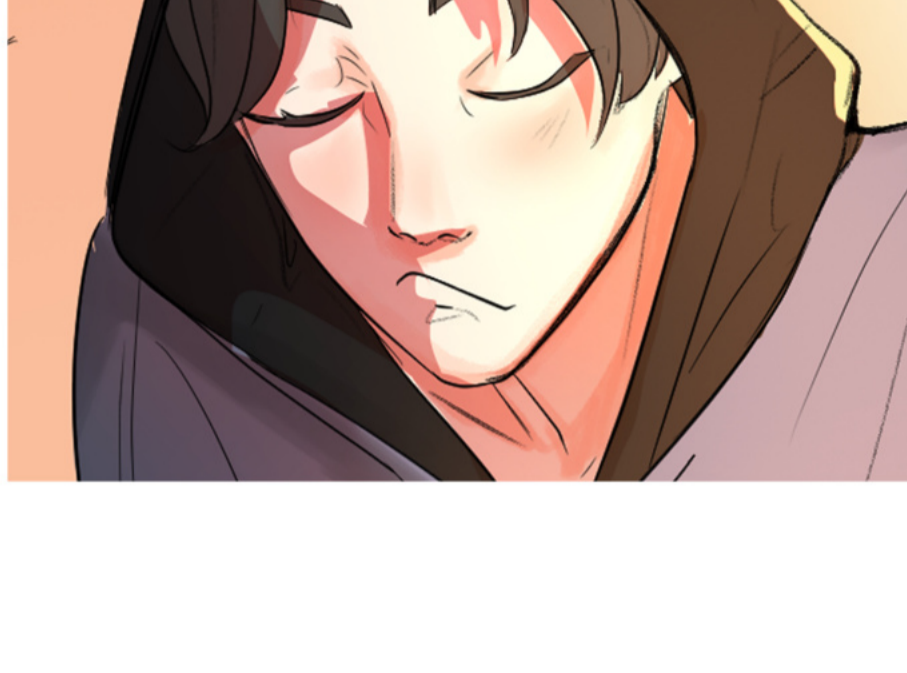


-CHARACTERS FAVORITE FOODS AND DO YOU HAVE ANY PETS? (PANWOLF1357)

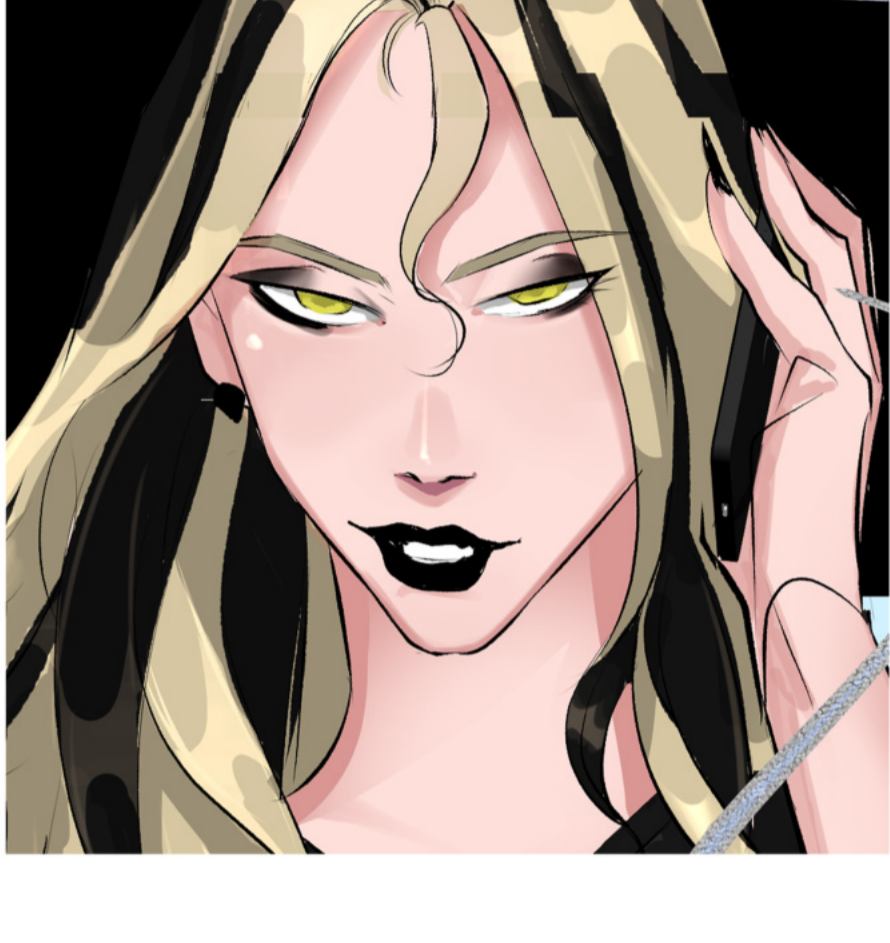
CAKES



CARROT



MANGO



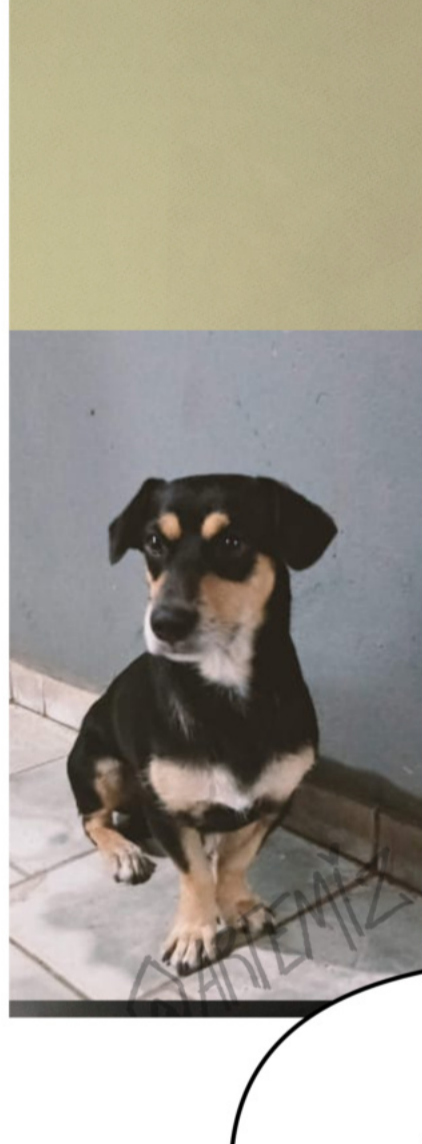
LASAGNA



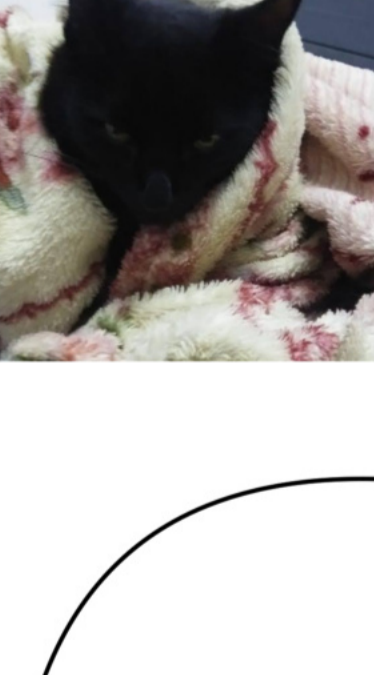
FOOD



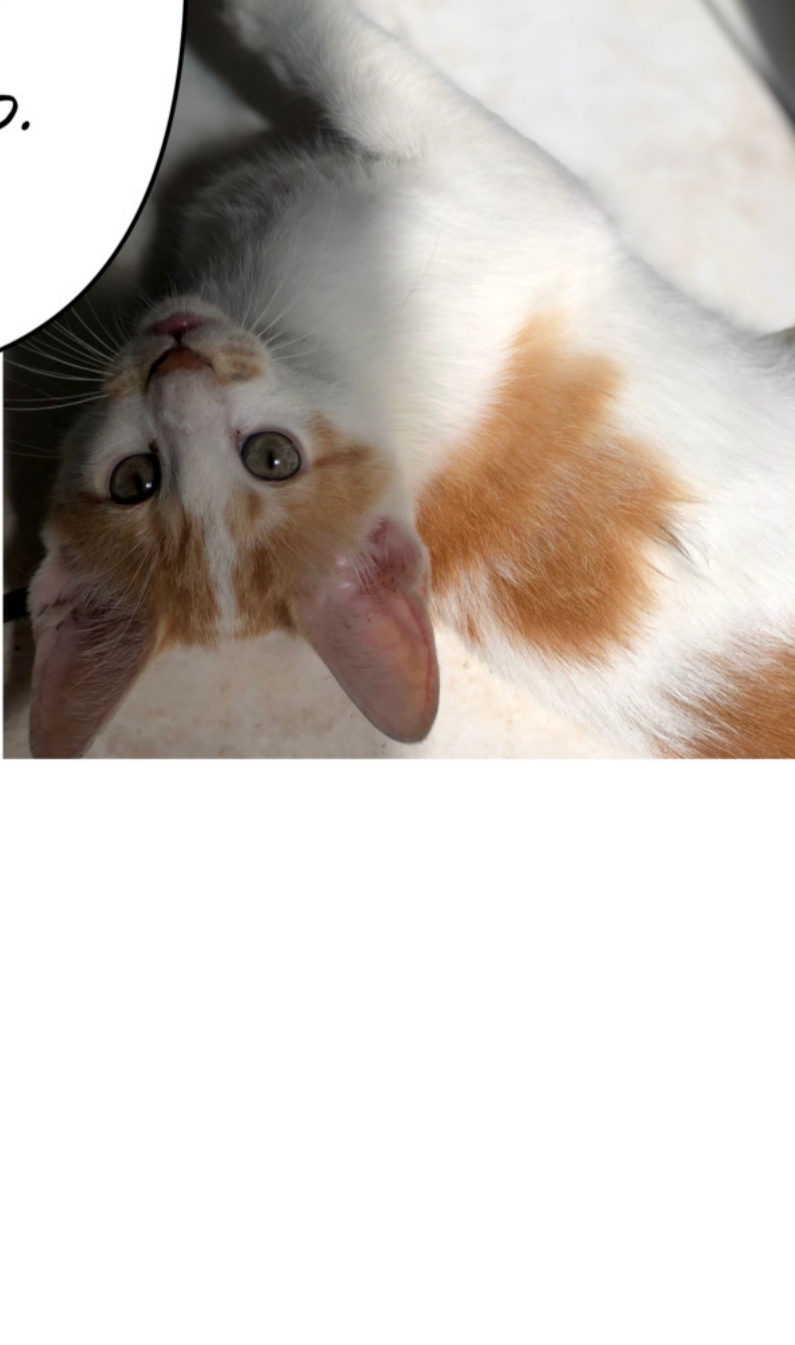
YES, I HAVE PETS.
A DOG NAMED BOB .



A CAT NAMED MAJOR.



AND THEIR YOUNGEST,
PERSEUS.
HE IS A VERY ANNOYING
LITTLE REDHEAD.



DID WANGARI AND HELENA HAD A
← PAST CONNECTION?
(LUCIABO&POUND;D)

LIKE
REINCARNATION?

I DON'T THINK
SO, HAHA.

THIS GIRL
IS JUST
OBSESSED WITH ME

HEY! WHO ARE
YOU CALLING
OBSESSED?



THAT'S IT!
I HOPE YOU ENJOYED THE Q&A
FOR THOSE WHO I DIDN'T ANSWER, DON'T WORRY,
YOU'LL GET ANOTHER CHANCE.

IT WAS A LOT OF FUN DOING THE Q&A.
I APOLOGIZE FOR ANY
GRAMMATICAL ERRORS, ENGLISH IS
NOT MY NATIVE LANGUAGE,
AND I'M STILL LEARNING.

THANK YOU FOR YOUR PARTICIPATION,
FOR ALL THE LOVE AND SUPPORT.
KEEP FOLLOWING DON'T LOOK AT THE SKY.

SEE YOU SOON! <3



THANK YOU
FOR READING!

