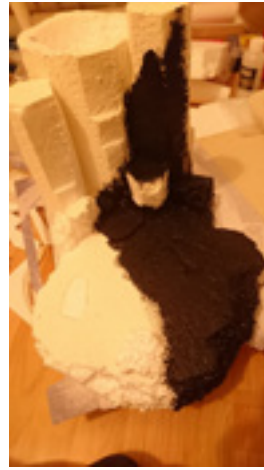
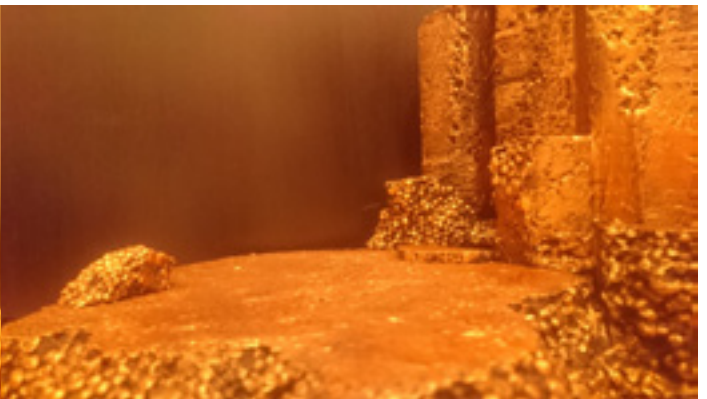




**AVENGERS DIORAMA**  
**ANIMAS ANIMUS**



BOUGHT MARVEL FIGURES, PLANNING THE ARRANGEMENT, BUILDING A BASE FROM STYROFOAM WITH THE HELP OF GLUE, AND PUTTY. PAINTED IT BLACK AFTER IT DRIED



DRY BRUSHED THE BASE WITH A COAT BRONZE ACRYLIC PAINT



GAVE THE BASE A FINAL TRANCLUCENT COAT OF WATER THINNED BLACK ACRYLIC PAINT TO MAKE IT LOOK WEATHERED



GLUING THE FIGURES TOGETHER AFTER I PAINTED THEM WITH BLACK WEATHERING TO MAKE EM LOOK DIRTY AND IN ORDER TO MAKE EM LOOK LIKE THEY ARE IN AN ACTUAL FIGHT



PLACING EVERYTHING ON  
THE BASE

ADDITIONALLY I BOUGHT A 3D ILLUSION LIGHT  
AND MADE A VECTOR TRACE OF THE AVEN-  
GERS LOGO IN ORDER TO GET IT CUT OUT  
OF ACRYLIC GLASS AND MAKE IT A COSTUM  
MADE ILLUSION LIGHT.



I HOPE THIS WAS AN INSPIRATION FOR YOU. MAKE SURE TO LET EVERYTHING DRY PROPERLY,  
TO USE GLUE THAT IS SUITABLE FOR STYROFOAM AND ENJOY BUILDING BASES FOR FIGURES!