

Charm School
BY GERTIE

**EXTRA CREDIT
WRAP TOP**

Sizes 18–34
with cup sizes A–H

5/8 inch (1.5 cm) seam allowances
are included on all pattern pieces.

PAGE 1 OF 4

PATTERN PIECE INDEX
1 Bodice, A–C Cup

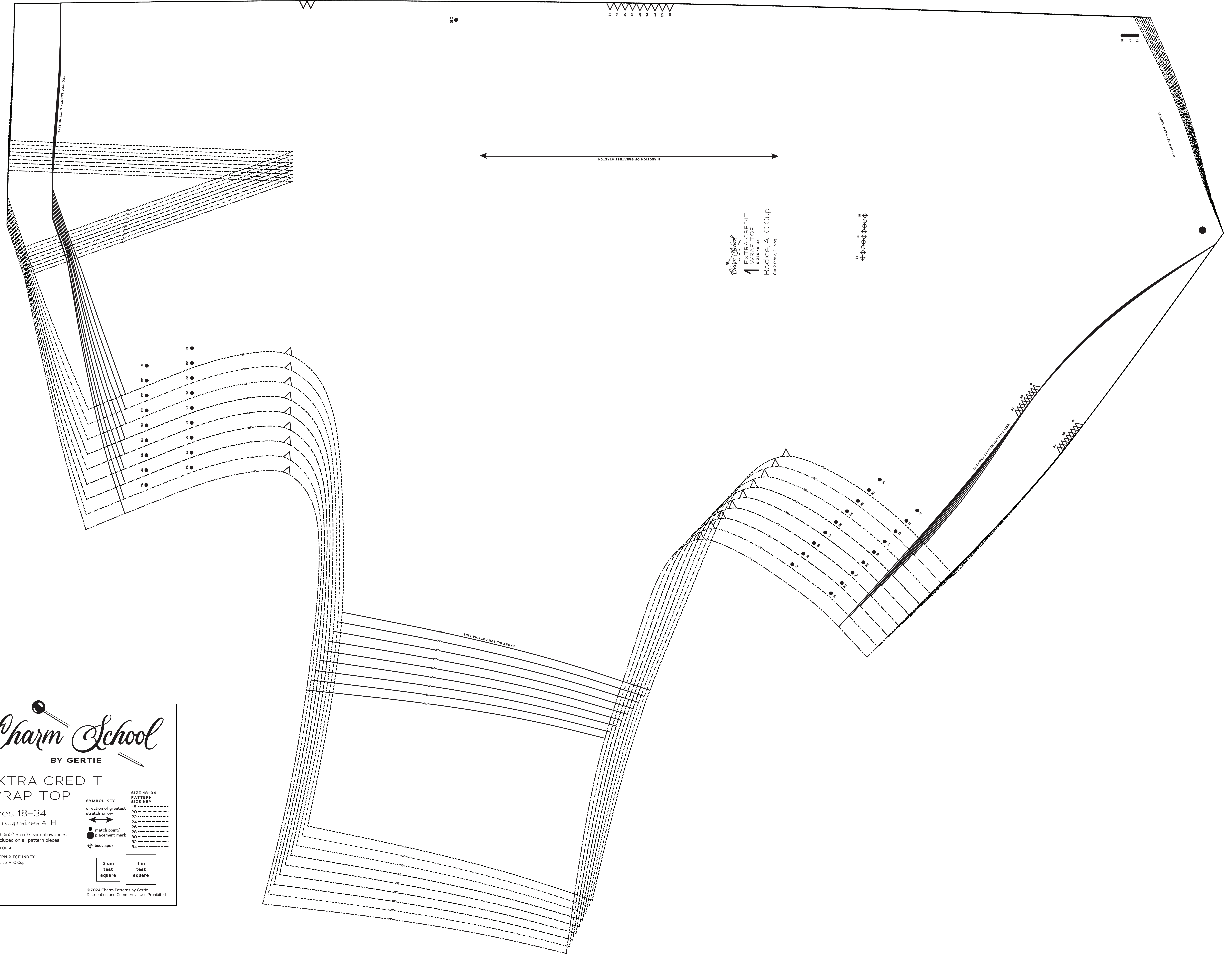
SYMBOL KEY
direction of greatest
stretch arrow
● match point/
placement mark
⊕ bust apex

**SIZE 18–34
PATTERN
SIZE KEY**
18 ————
20 ————
22 ————
24 ————
26 ————
28 ————
30 ————
32 ————
34 ————

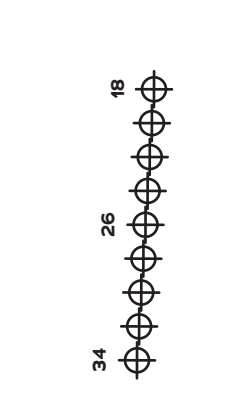
2 cm
test
square

1 in
test
square

© 2024 Charm Patterns by Gertie
Distribution and Commercial Use Prohibited



Charm School
1 EXTRA CREDIT
WRAP TOP
SIZES 18–34
Bodice, A–C Cup
Cut 2 fabric, 2 lining



Charm School
BY GERTIE

**EXTRA CREDIT
WRAP TOP**

Sizes 18–34
with cup sizes A–H

5/8 inch (1.5 cm) seam allowances
are included on all pattern pieces.

PAGE 3 OF 4

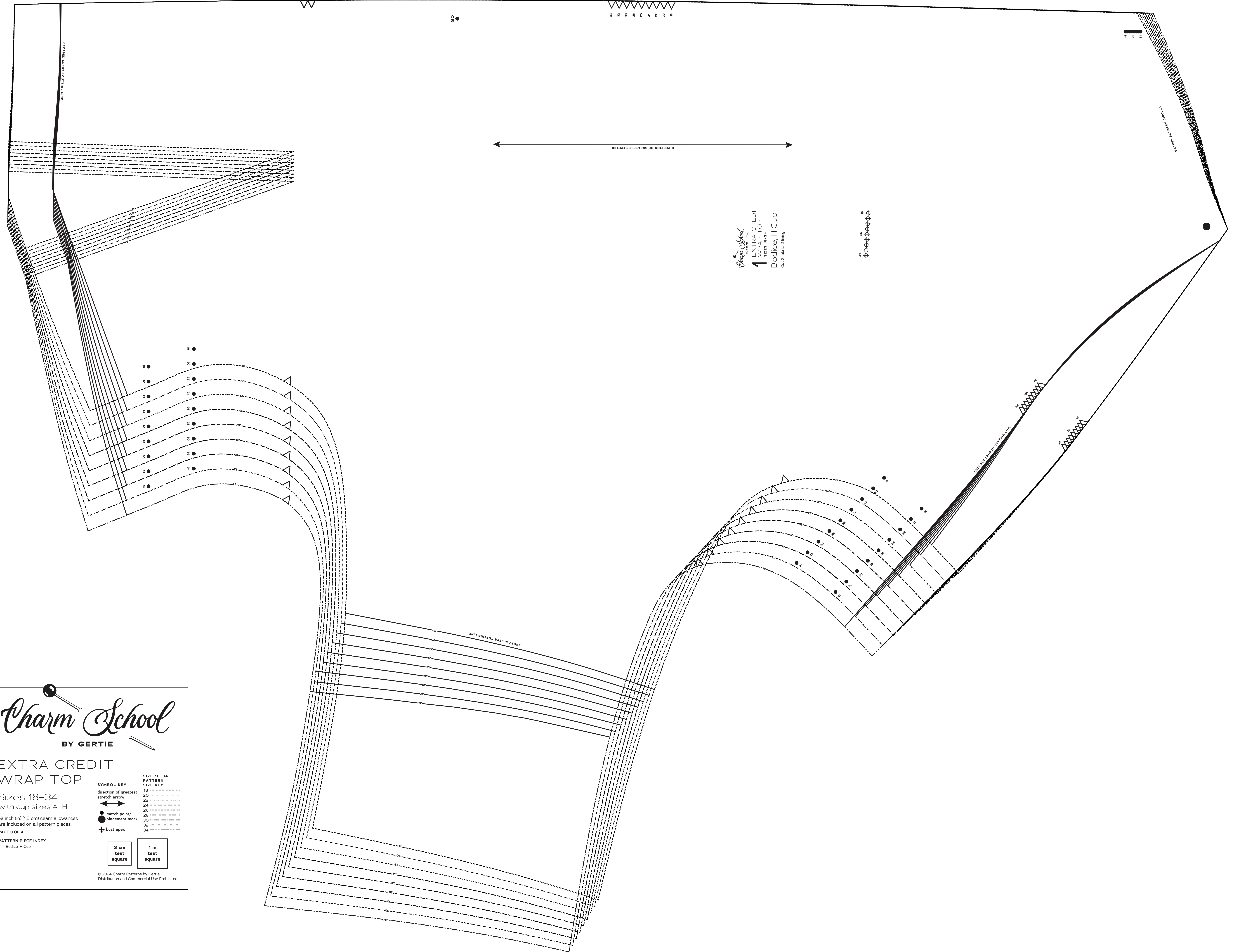
PATTERN PIECE INDEX
1 Bodice, H Cup

SYMBOL KEY
 direction of greatest stretch arrow
 match point/
 placement mark
 bust apex

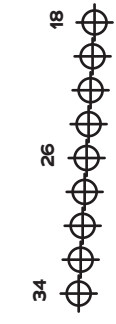
**SIZE 18–34
PATTERN
SIZE KEY**
 18 -----
 20 -----
 22 -----
 24 -----
 26 -----
 28 -----
 30 -----
 32 -----
 34 -----

2 cm test square
1 in test square

© 2024 Charm Patterns by Gertie
Distribution and Commercial Use Prohibited



Charm School
EXTRA CREDIT
WRAP TOP
SIZES 18-34
Bodice, H Cup
cut 2 fabric, 2 lining



Charm School
BY GERTIE

**EXTRA CREDIT
WRAP TOP**

Sizes 18-34
with cup sizes A-H

5/8 inch (1.5 cm) seam allowances
are included on all pattern pieces.

PAGE 4 OF 4

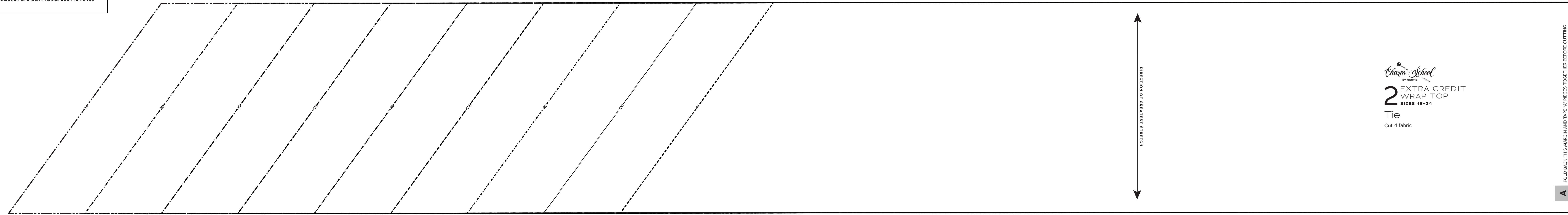
PATTERN PIECE INDEX
2 Tie

SYMBOL KEY
direction of greatest stretch arrow
● match point/
placement mark
⊕ bust apex

**SIZE 18-34
PATTERN
SIZE KEY**
18
20
22
24
26
28
30
32
34

2 cm test square
1 in test square

© 2024 Charm Patterns by Gertie
Distribution and Commercial Use Prohibited



Charm School
BY GERTIE

2 EXTRA CREDIT
WRAP TOP
SIZES 18-34
Tie
Cut 4 fabric

FOLD BACK THIS MARGIN AND TAPE TO PIECES TOGETHER BEFORE CUTTING.

