



Skipper Dress and Bodysuit

Sizes 2-20
with cup sizes A-H

5/8 inch (in) (1.5 cm) seam allowances are included on all pattern pieces.

PATTERN SIZE KEY

- 2 —————
- 4 - - - - -
- 6 ·······
- 8 - - - - -
- 10 - - - - -
- 12 ·······
- 14 ·······
- 16 ·······
- 18 ·······
- 20 ·······

SYMBOL KEY

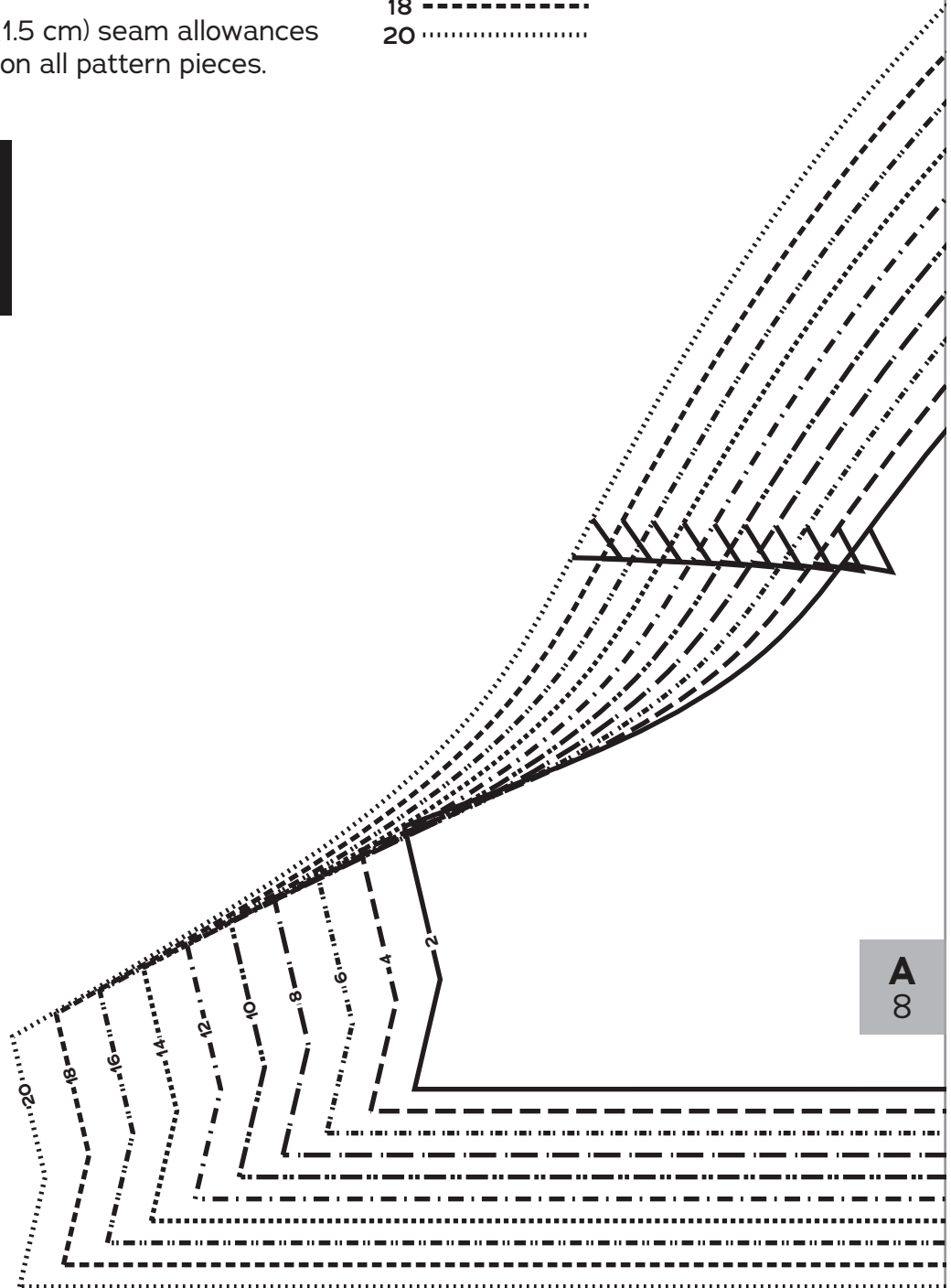
grainline arrow



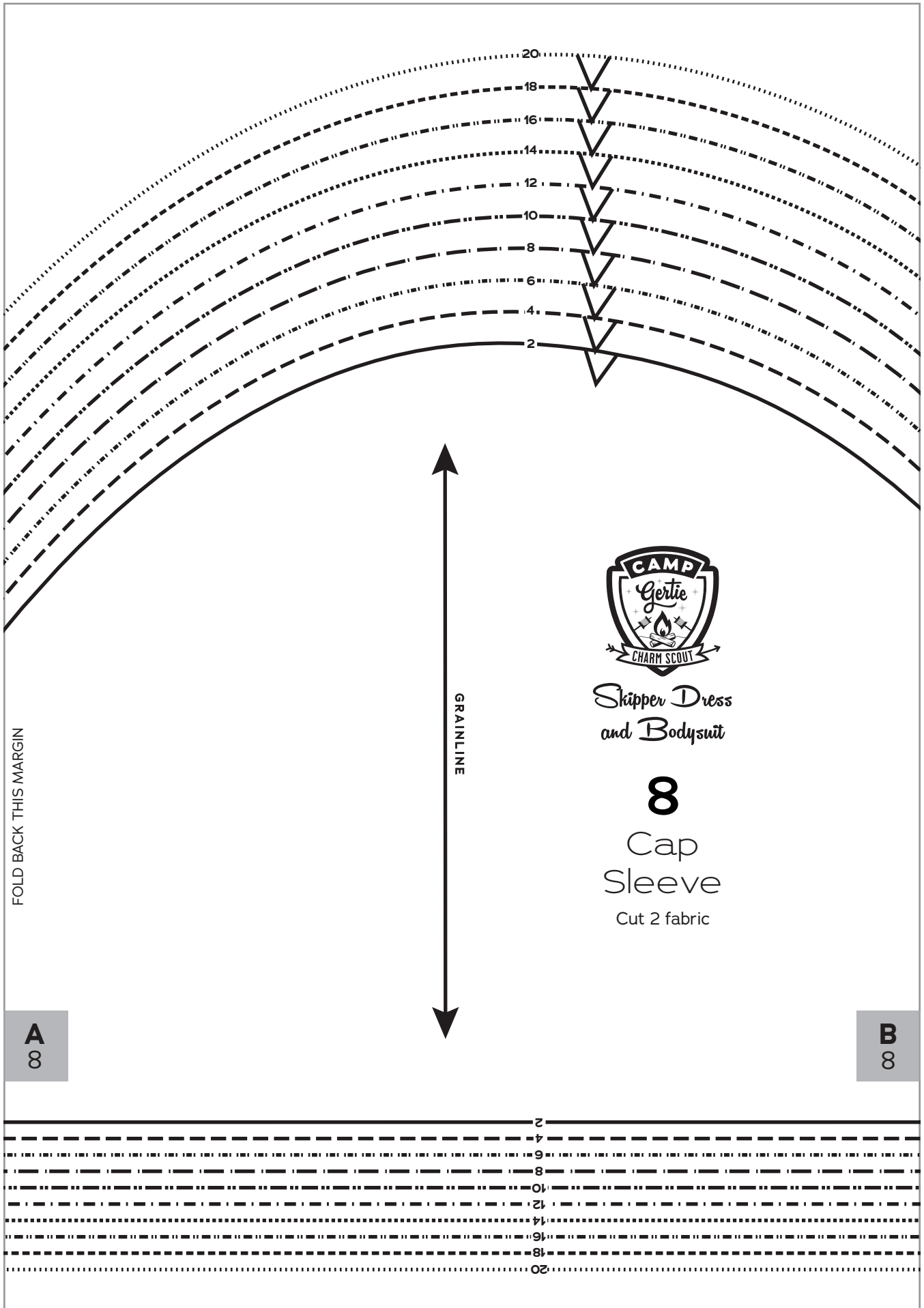
match point/
placement mark



1" test square



A
8



FOLD BACK THIS MARGIN

GRAINLINE



Skipper Dress
and Bodysuit

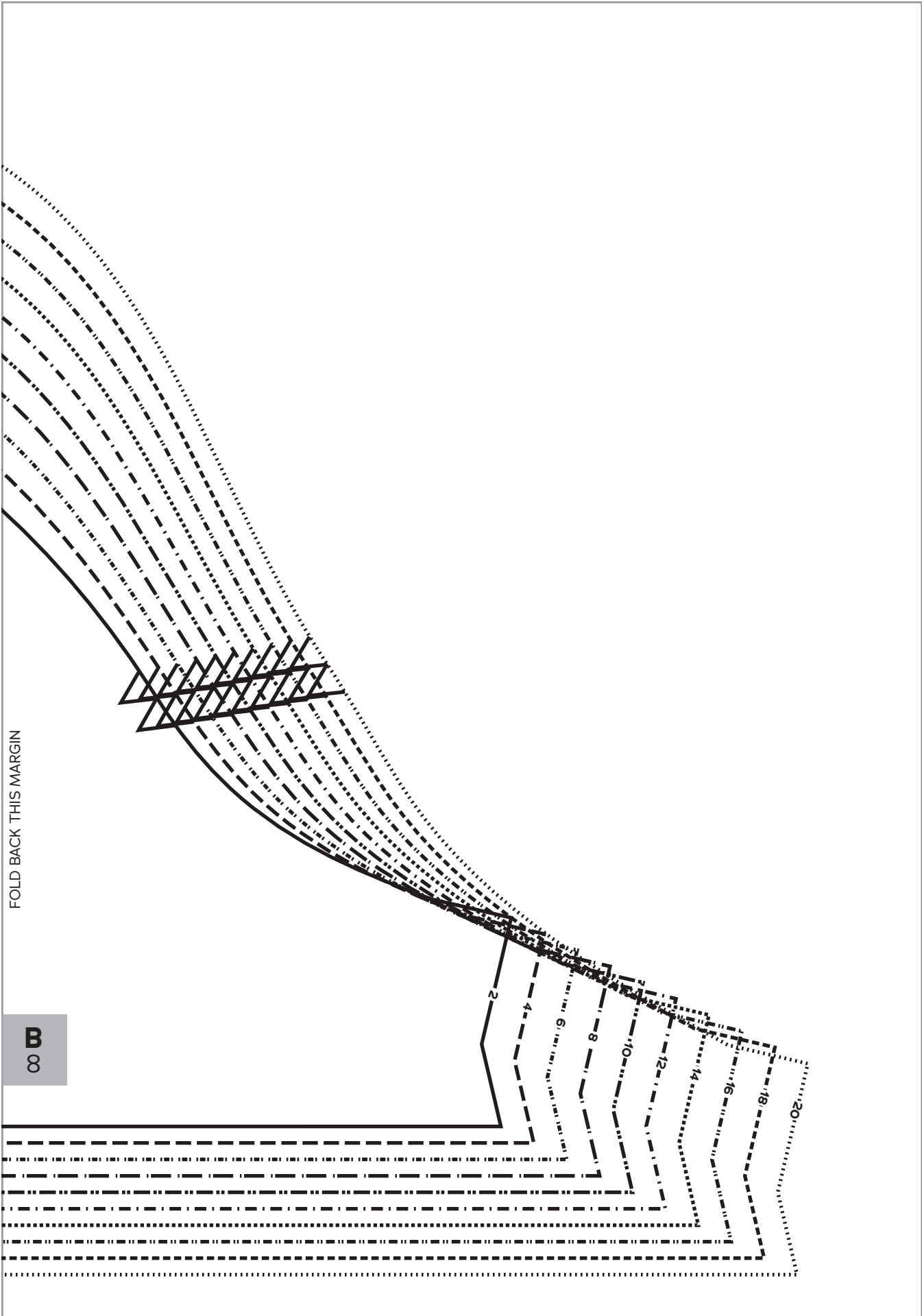
8

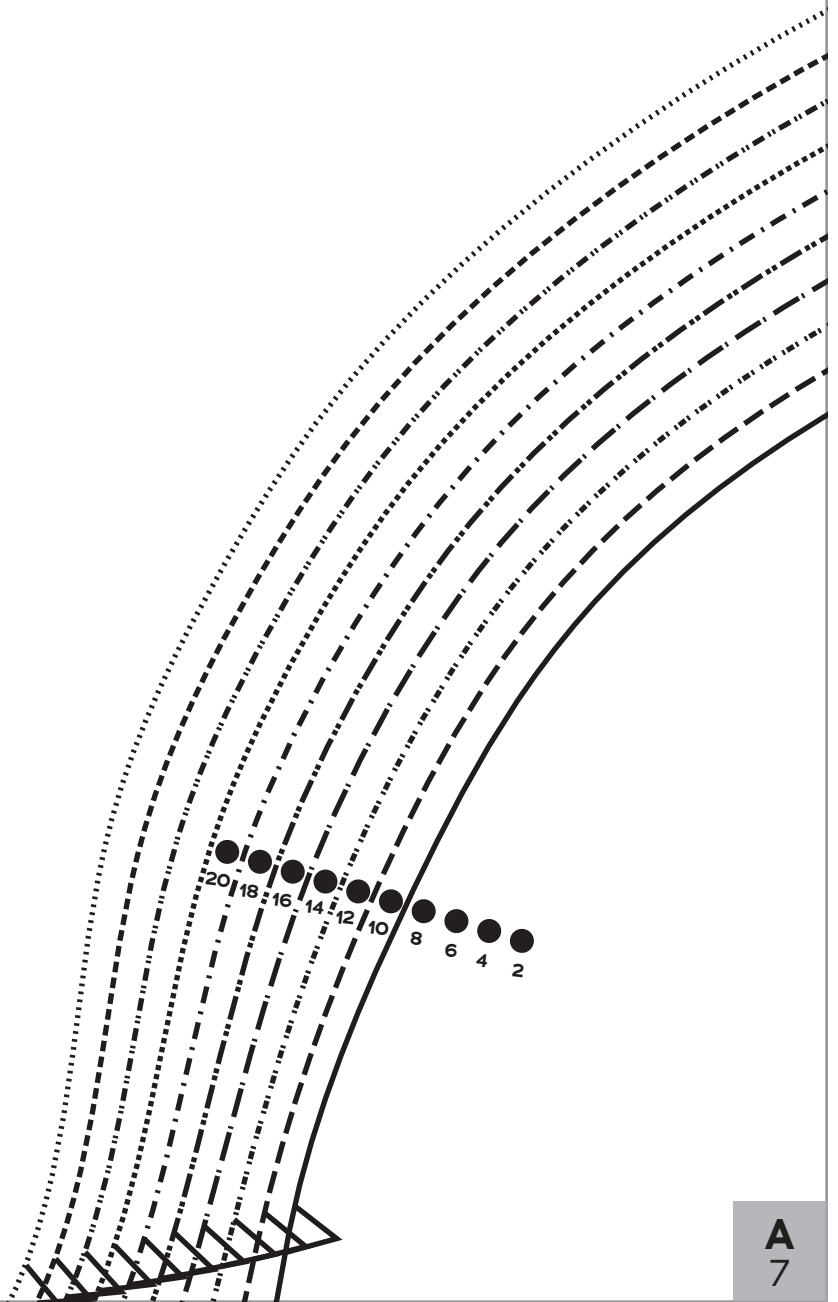
Cap
Sleeve

Cut 2 fabric

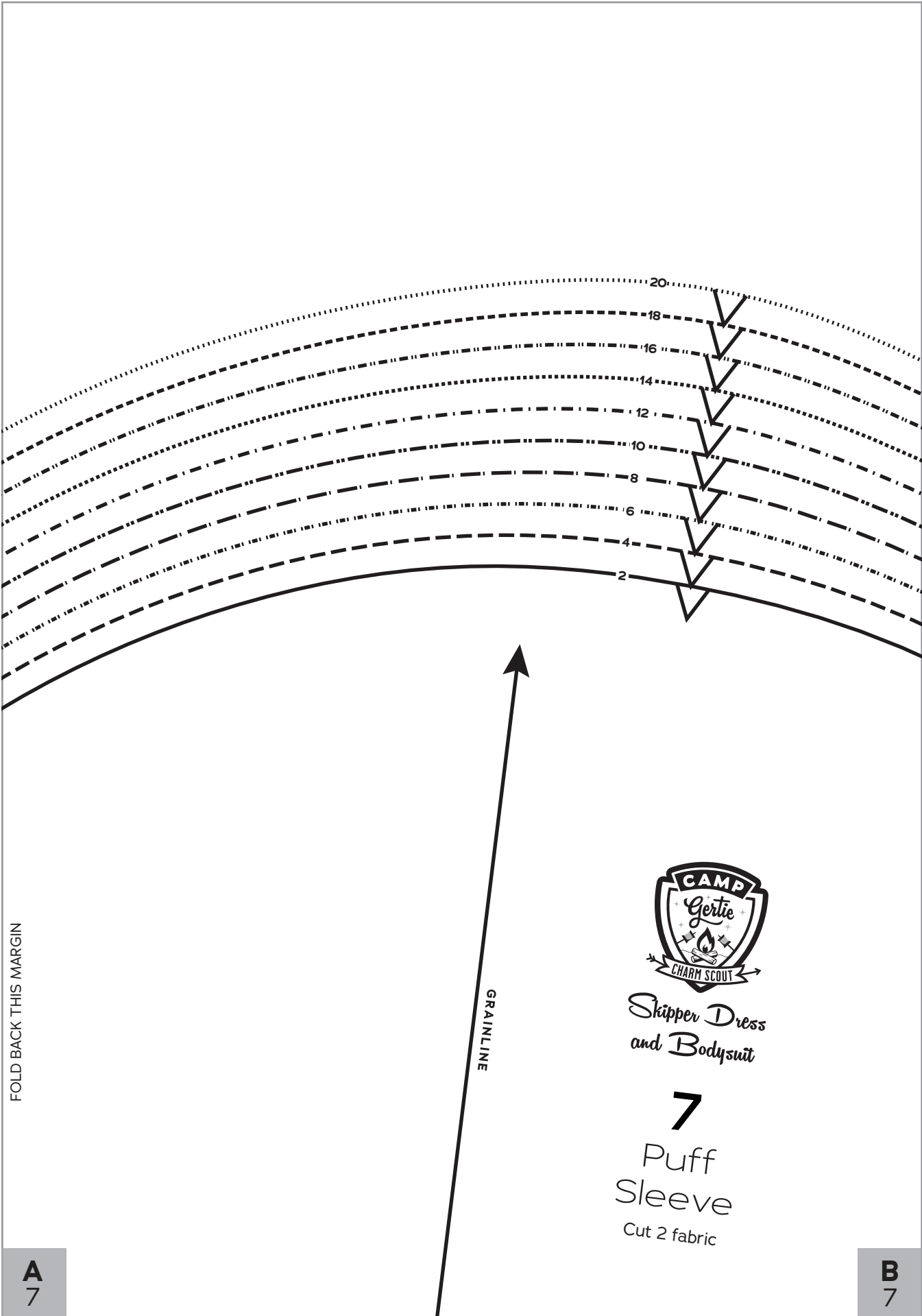
A
8

B
8





A
7

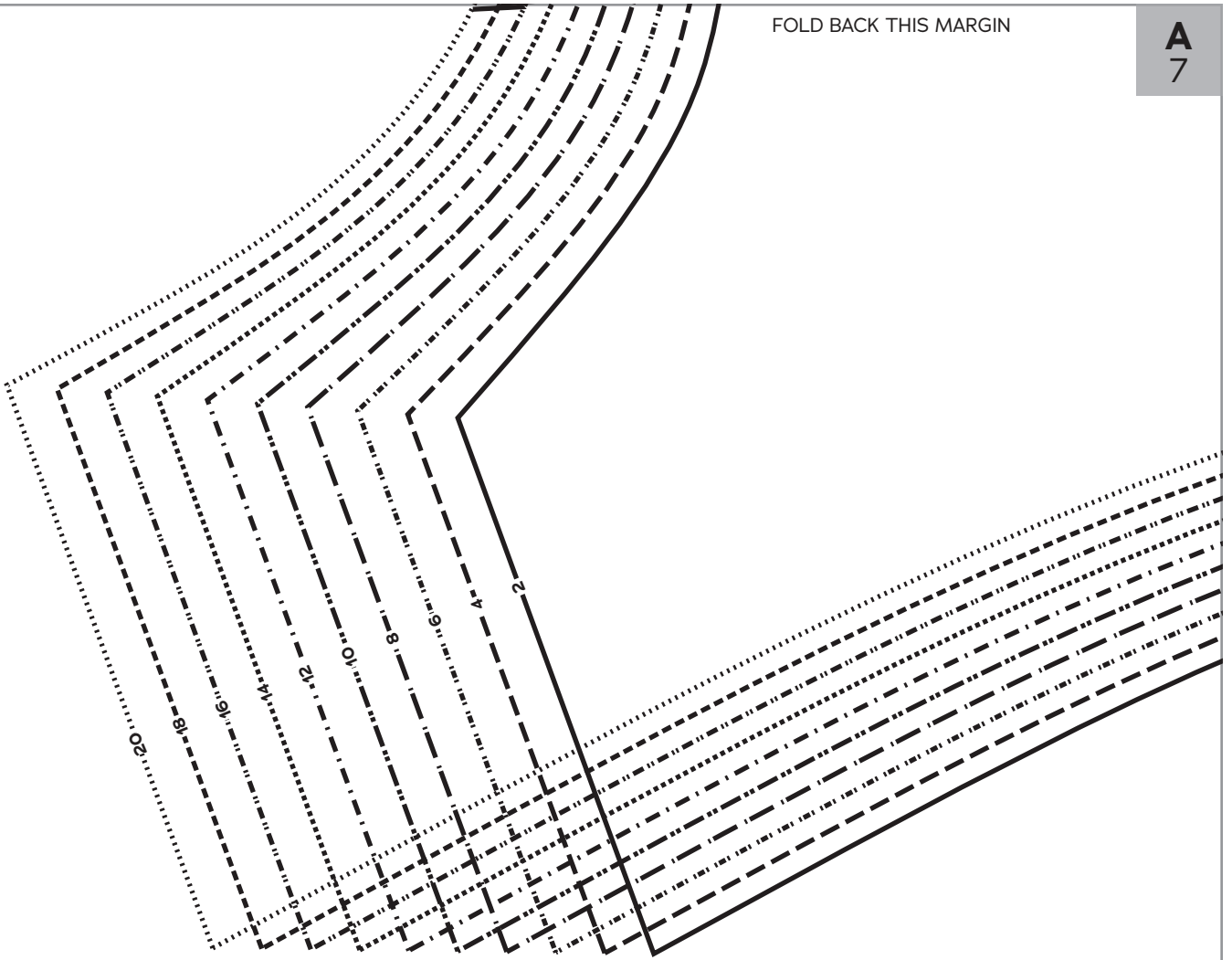


FOLD BACK THIS MARGIN

B
7

FOLD BACK THIS MARGIN

A
7

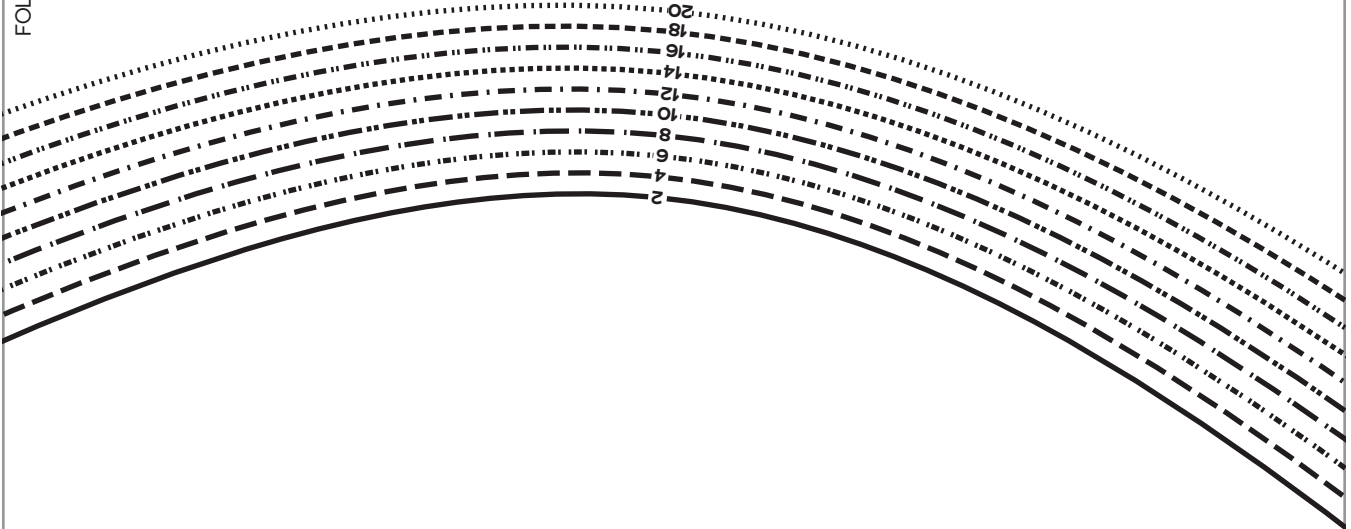


A
7

FOLD BACK THIS MARGIN

B
7

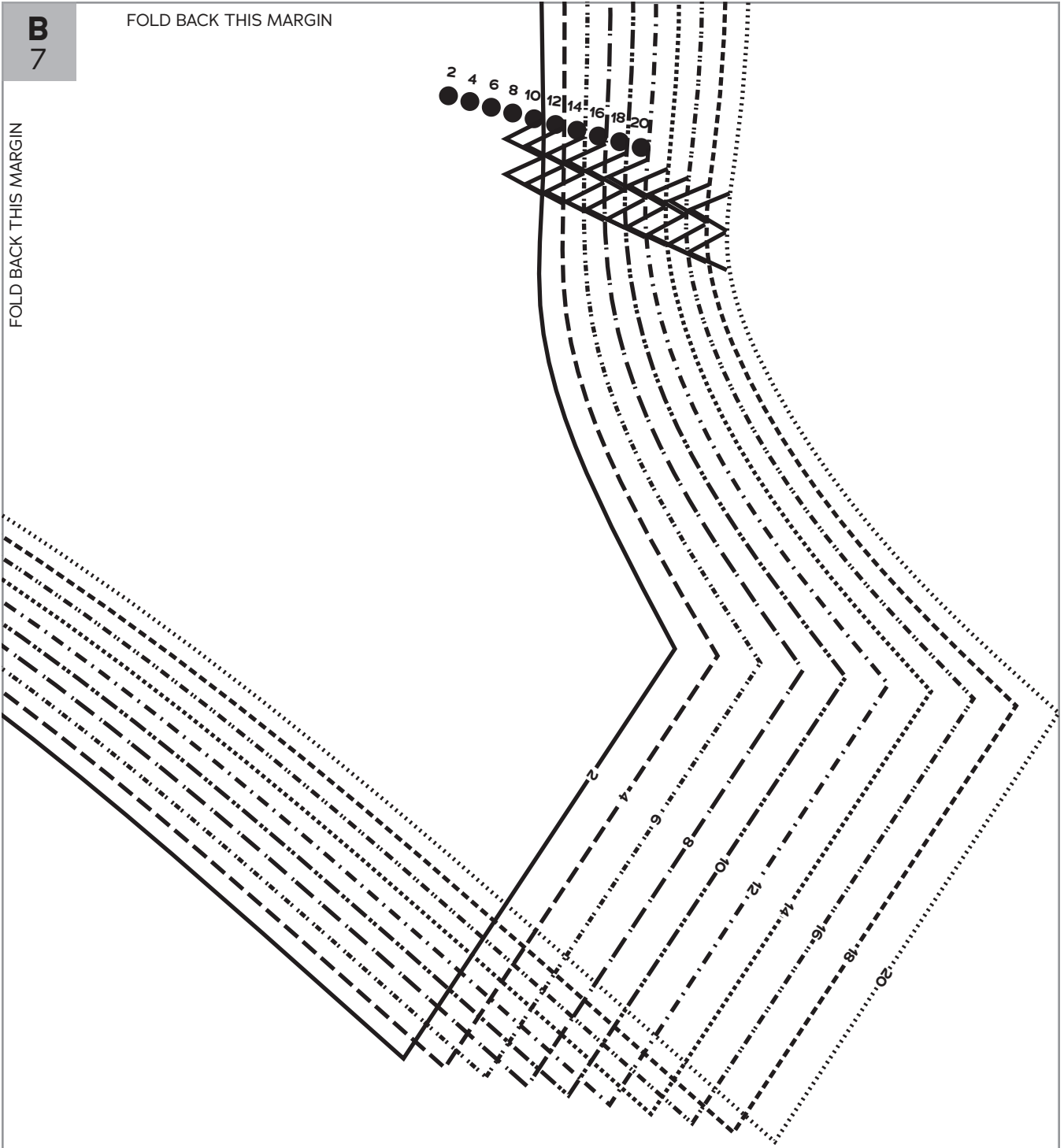
FOLD BACK THIS MARGIN

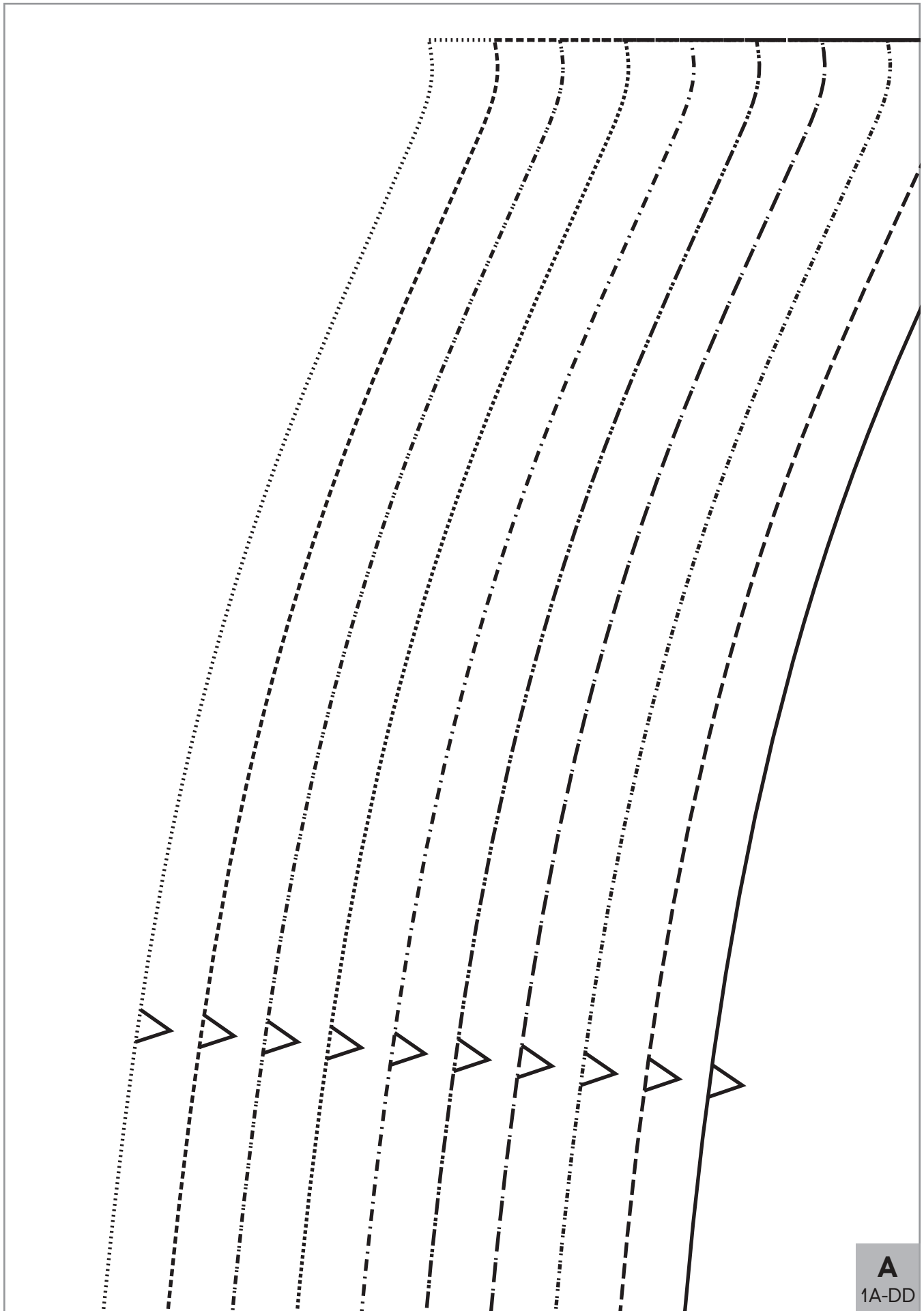


B
7

FOLD BACK THIS MARGIN

FOLD BACK THIS MARGIN





A
1A-DD

FOLD BACK THIS MARGIN

A
1A-DD

20

18

16

14

12

10

8

6

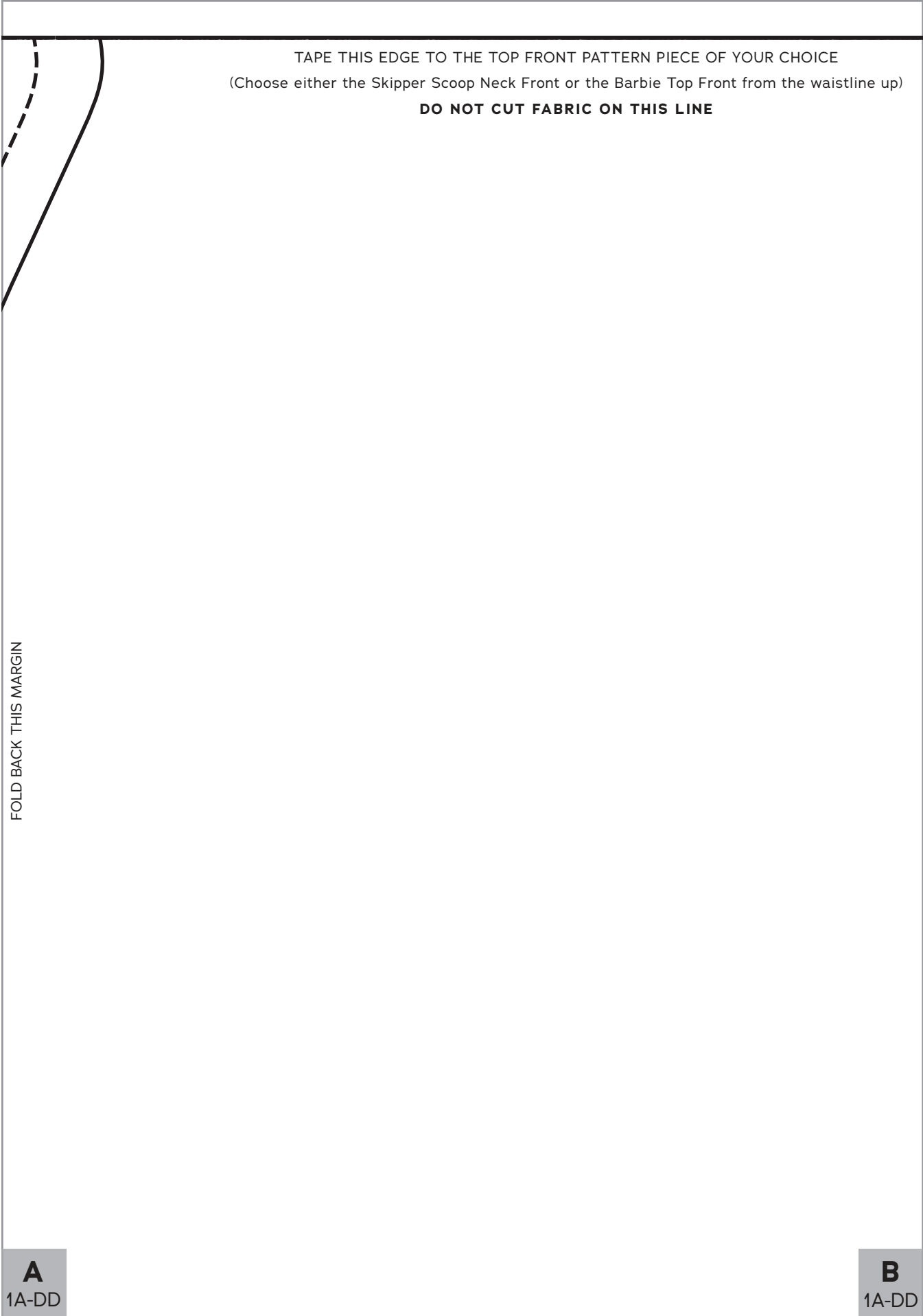
4

2

C
1A-DD

FOLD BACK THIS
MARGIN

C
1A-DD



TAPE THIS EDGE TO THE TOP FRONT PATTERN PIECE OF YOUR CHOICE
(Choose either the Skipper Scoop Neck Front or the Barbie Top Front from the waistline up)

DO NOT CUT FABRIC ON THIS LINE

FOLD BACK THIS MARGIN

A
1A-DD

B
1A-DD

FOLD BACK THIS MARGIN

A
1A-DD

B
1A-DD



*Skipper Dress
and Bodysuit*

1

Skirt
Front
A-DD
Cup

Cut 1 fabric on fold

FOLD BACK THIS MARGIN

C
1A-DD

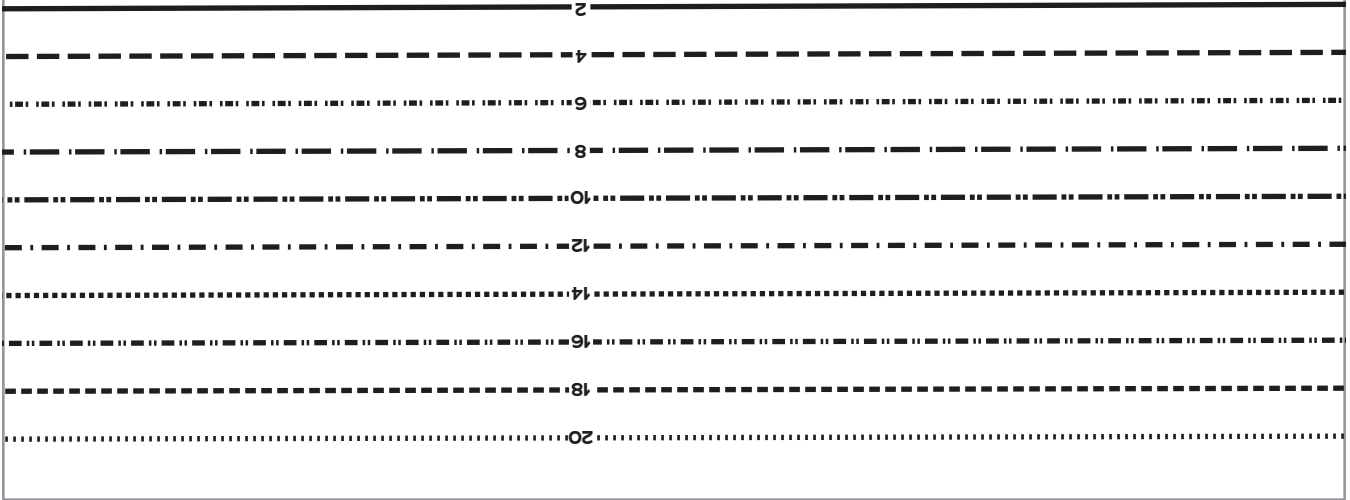
D
1A-DD

C
1A-DD

FOLD BACK THIS MARGIN

D
1A-DD

FOLD BACK THIS MARGIN



FOLD BACK THIS MARGIN



B
1A-DD



A
1F-H

B
1A-DD

FOLD BACK THIS MARGIN

FOLD



FOLD
BACK
THIS
MARGIN



20

18

16

14

12

10

8

6

4

2

FOLD
BACK
THIS
MARGIN

A
1F-H

D
1A-DD

C
1F-H

D
1A-DD

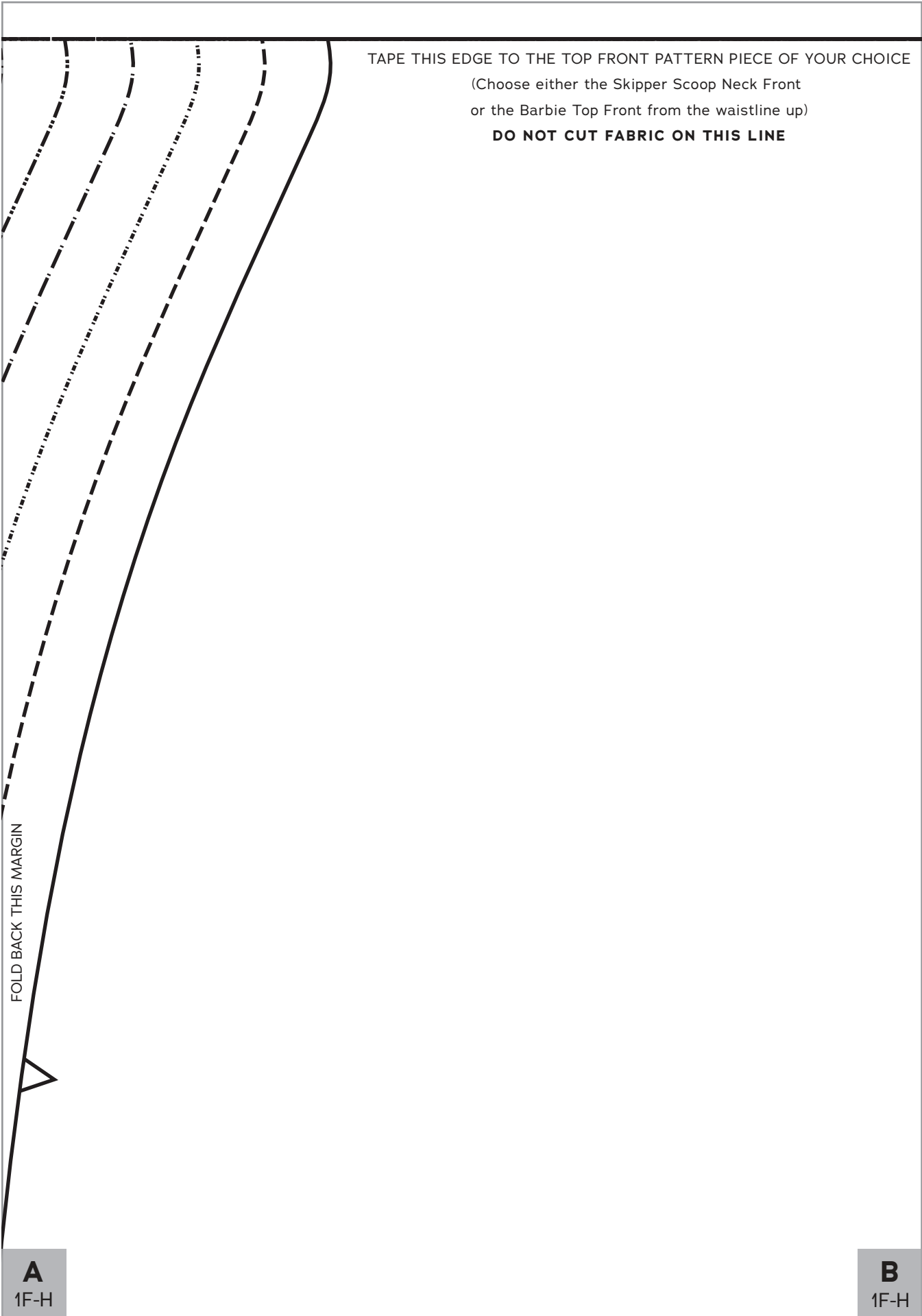
FOLD
BACK
THIS
MARGIN

FOLD BACK THIS MARGIN



FOLD
BACK
THIS
MARGIN

C
1F-H



TAPE THIS EDGE TO THE TOP FRONT PATTERN PIECE OF YOUR CHOICE
(Choose either the Skipper Scoop Neck Front
or the Barbie Top Front from the waistline up)
DO NOT CUT FABRIC ON THIS LINE

FOLD BACK THIS MARGIN

A
1F-H

B
1F-H

FOLD BACK THIS MARGIN

A
1F-H

B
1F-H



*Skipper Dress
and Bodysuit*

1

Skirt
Front
F-H Cup

Cut 1 fabric on fold

FOLD BACK THIS MARGIN

C
1F-H

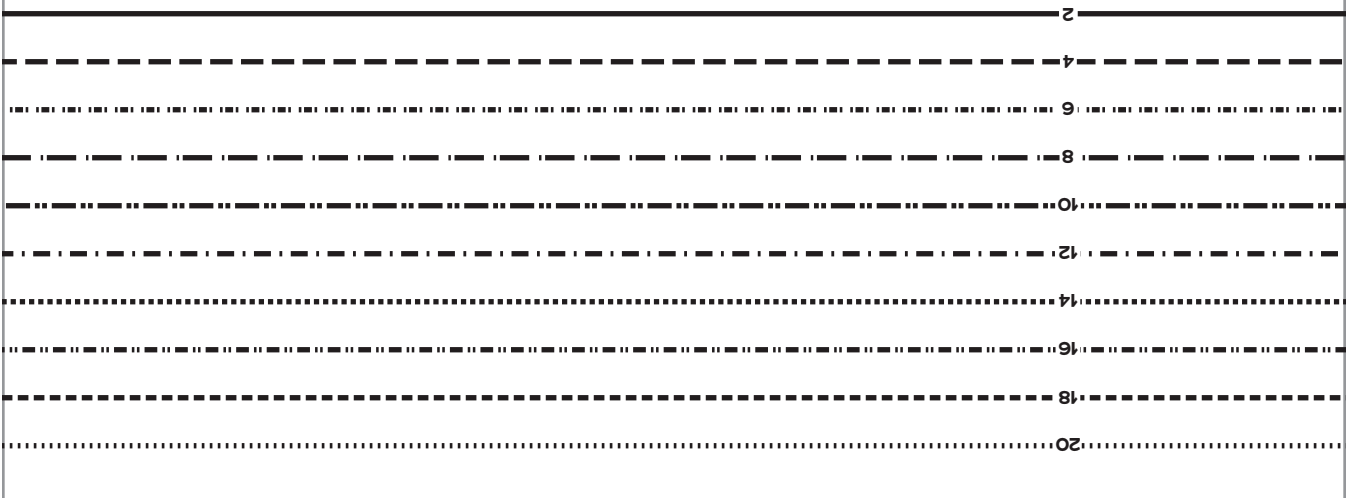
D
1F-H

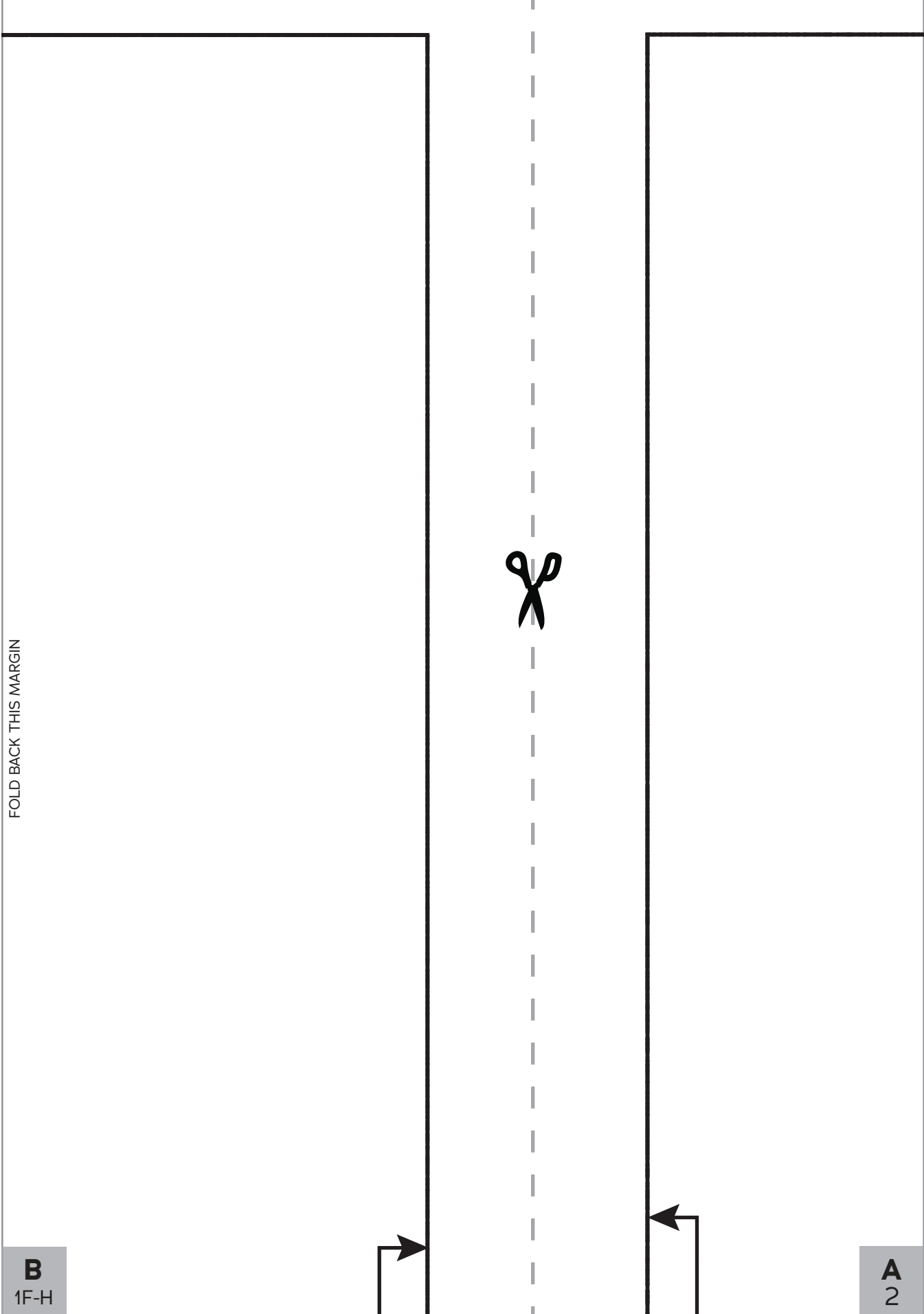
C
1F-H

FOLD BACK THIS MARGIN

D
1F-H

FOLD BACK THIS MARGIN





B
1F-H

FOLD BACK THIS MARGIN

FOLD BACK THIS MARGIN

A
2

FOLD BACK THIS MARGIN

FOLD

FOLD



D
1F-H

C
2

D
1F-H

FOLD BACK THIS MARGIN

FOLD BACK THIS MARGIN

C
2

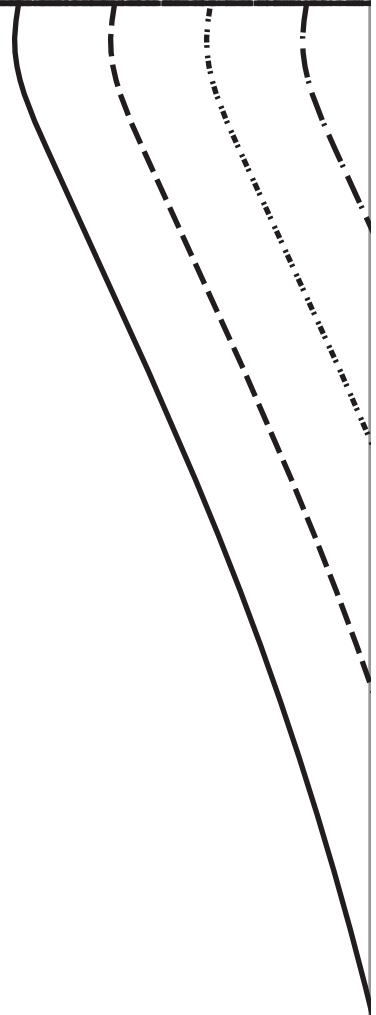
FOLD BACK THIS MARGIN



TAPE THIS EDGE TO THE TOP BACK PATTERN PIECE OF YOUR CHOICE

(Choose either the Skipper Scoop Neck Back
or the Barbie Top Back from the waistline up)

DO NOT CUT FABRIC ON THIS LINE



FOLD BACK THIS MARGIN

A
2

B
2

A
2

FOLD BACK THIS MARGIN

B
2



*Skipper Dress
and Bodysuit*

2

Skirt
Back

Cut 1 fabric on fold

FOLD BACK THIS MARGIN

C
2

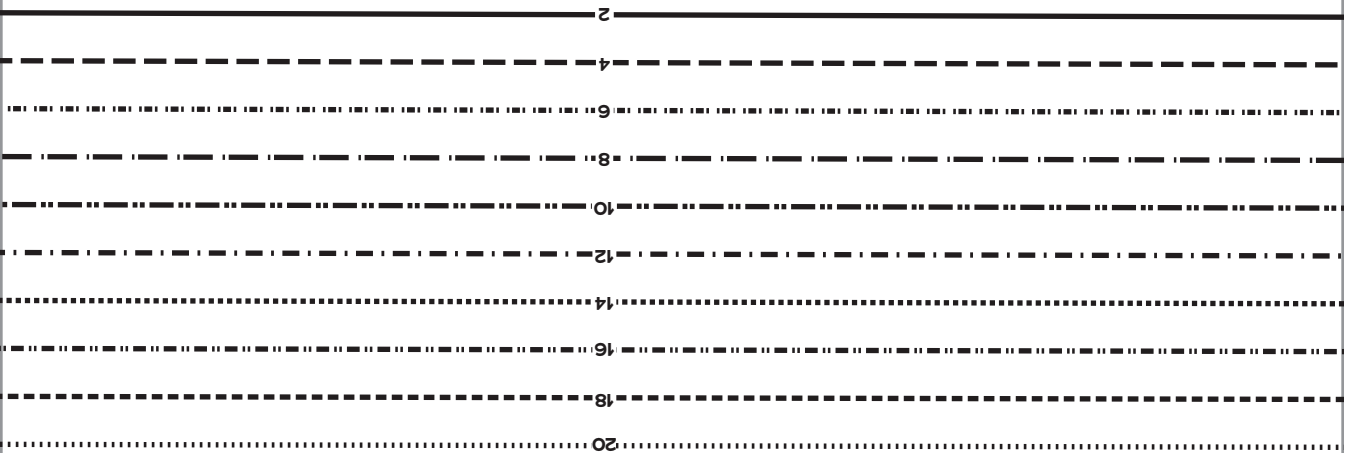
D
2

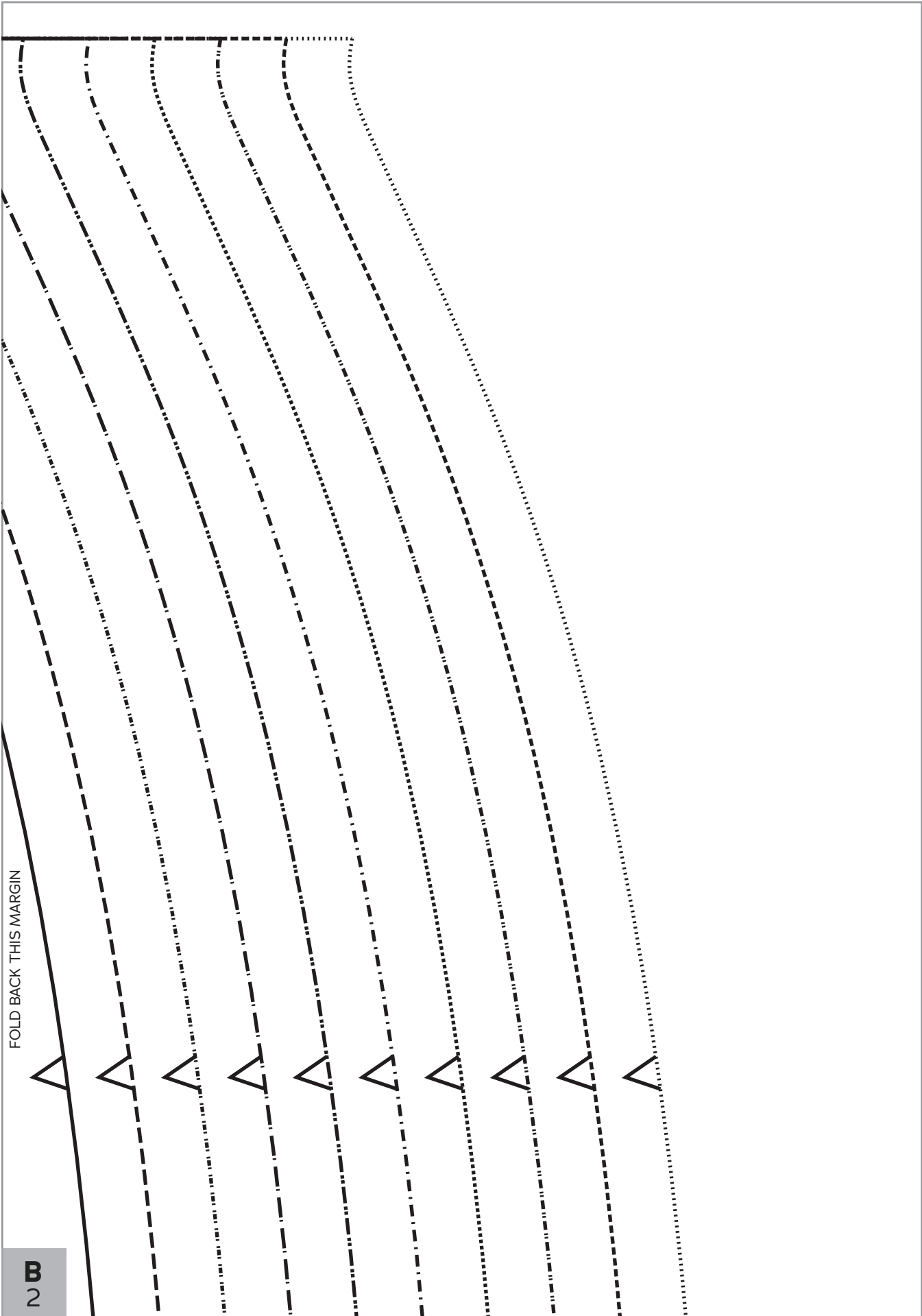
C
2

FOLD BACK THIS MARGIN

D
2

FOLD BACK THIS MARGIN





FOLD BACK THIS MARGIN

B

B
2

FOLD
BACK
THIS
MARGIN

2

4

6

8

10

12

14

16

18

20

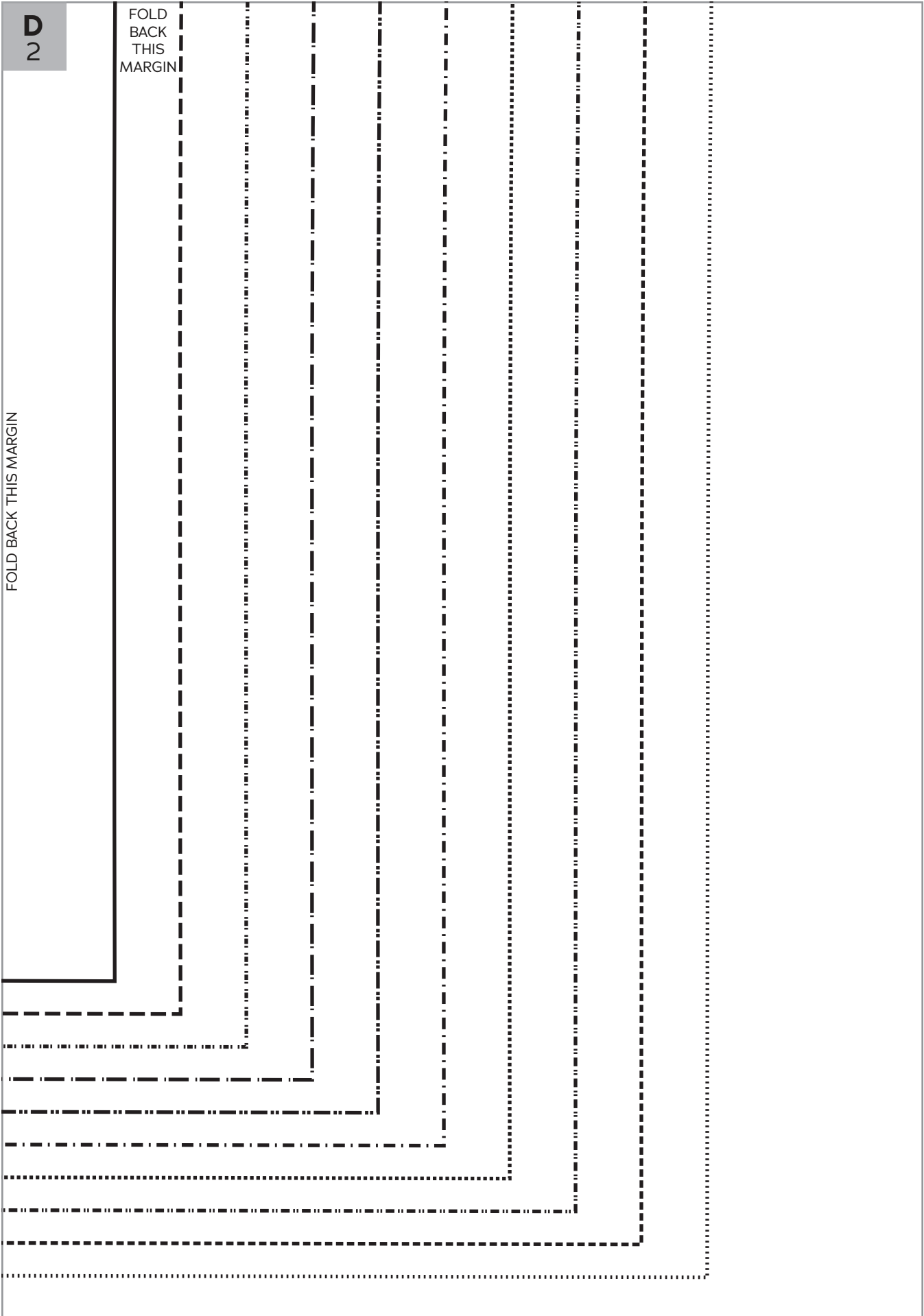
FOLD BACK THIS MARGIN

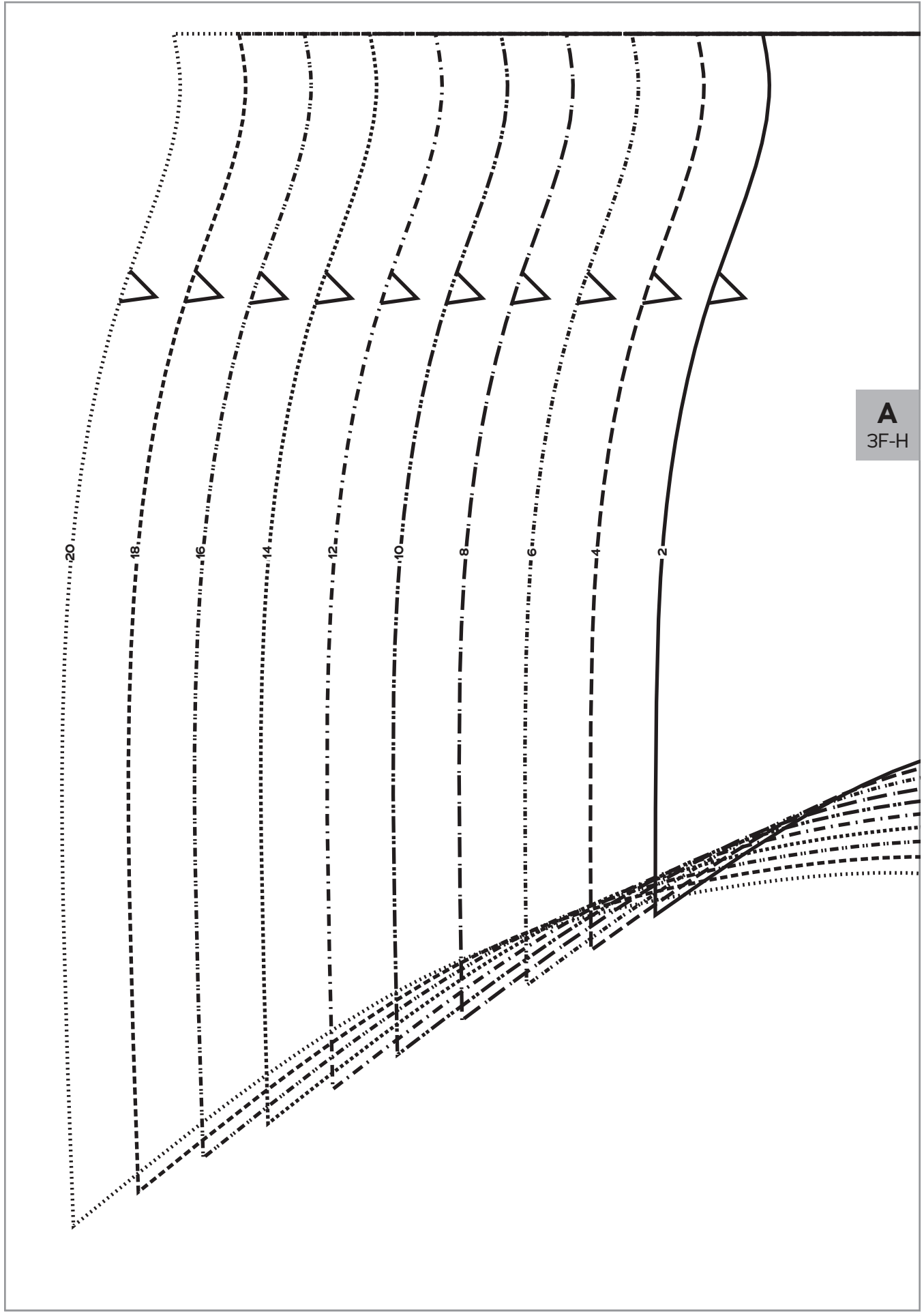
D
2

D
2

FOLD
BACK
THIS
MARGIN

FOLD BACK THIS MARGIN





A
3F-H

TAPE THIS EDGE TO THE TOP FRONT PATTERN PIECE OF YOUR CHOICE
 (Choose either the Skipper Scoop Neck Front
 or the Barbie Top Front from the waistline up)
DO NOT CUT FABRIC ON THIS LINE



*Skipper Dress
 and Bodysuit*

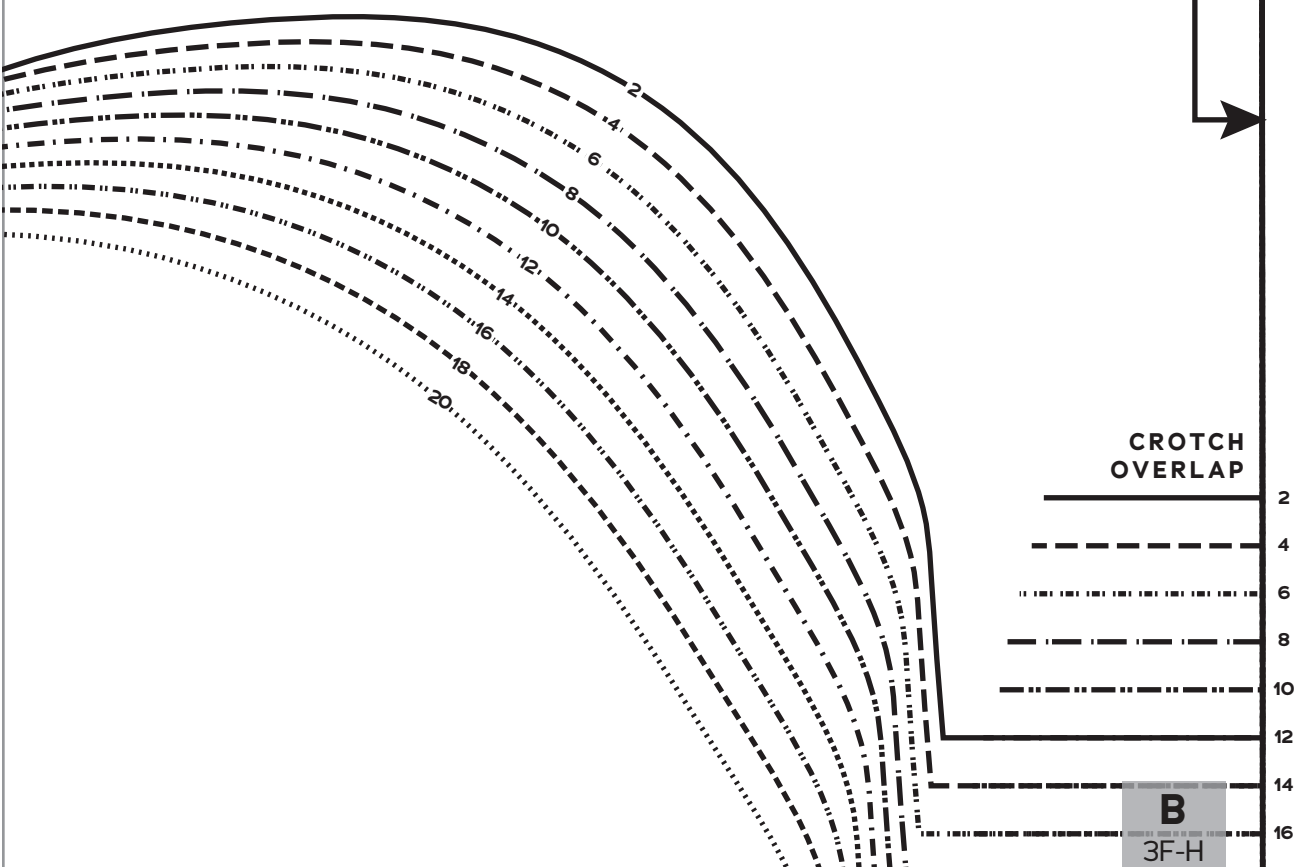
3

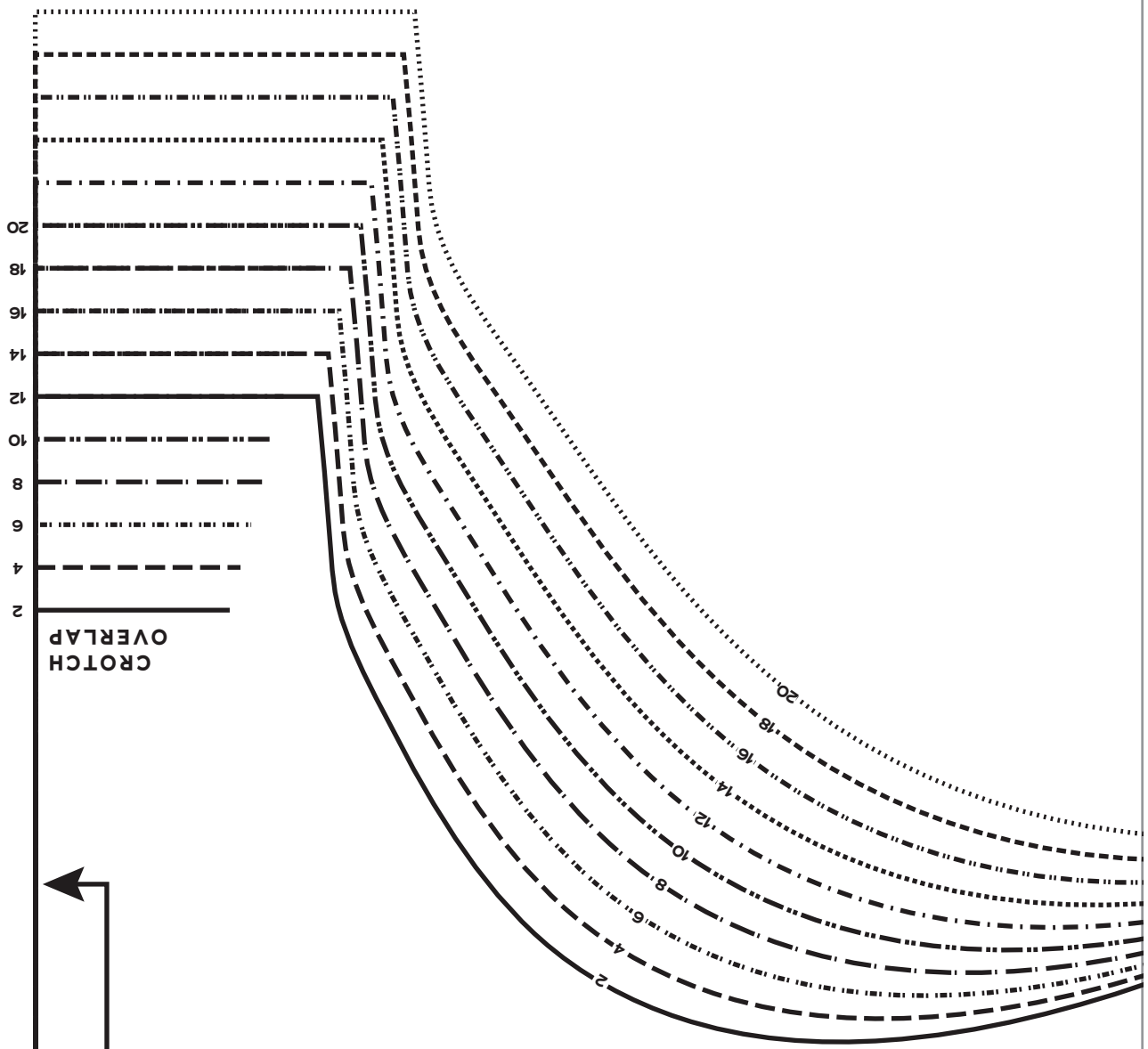
Bodysuit
 Front
 F-H Cup
 Cut 1 fabric on fold

A
 3F-H

FOLD BACK THIS MARGIN

FOLD





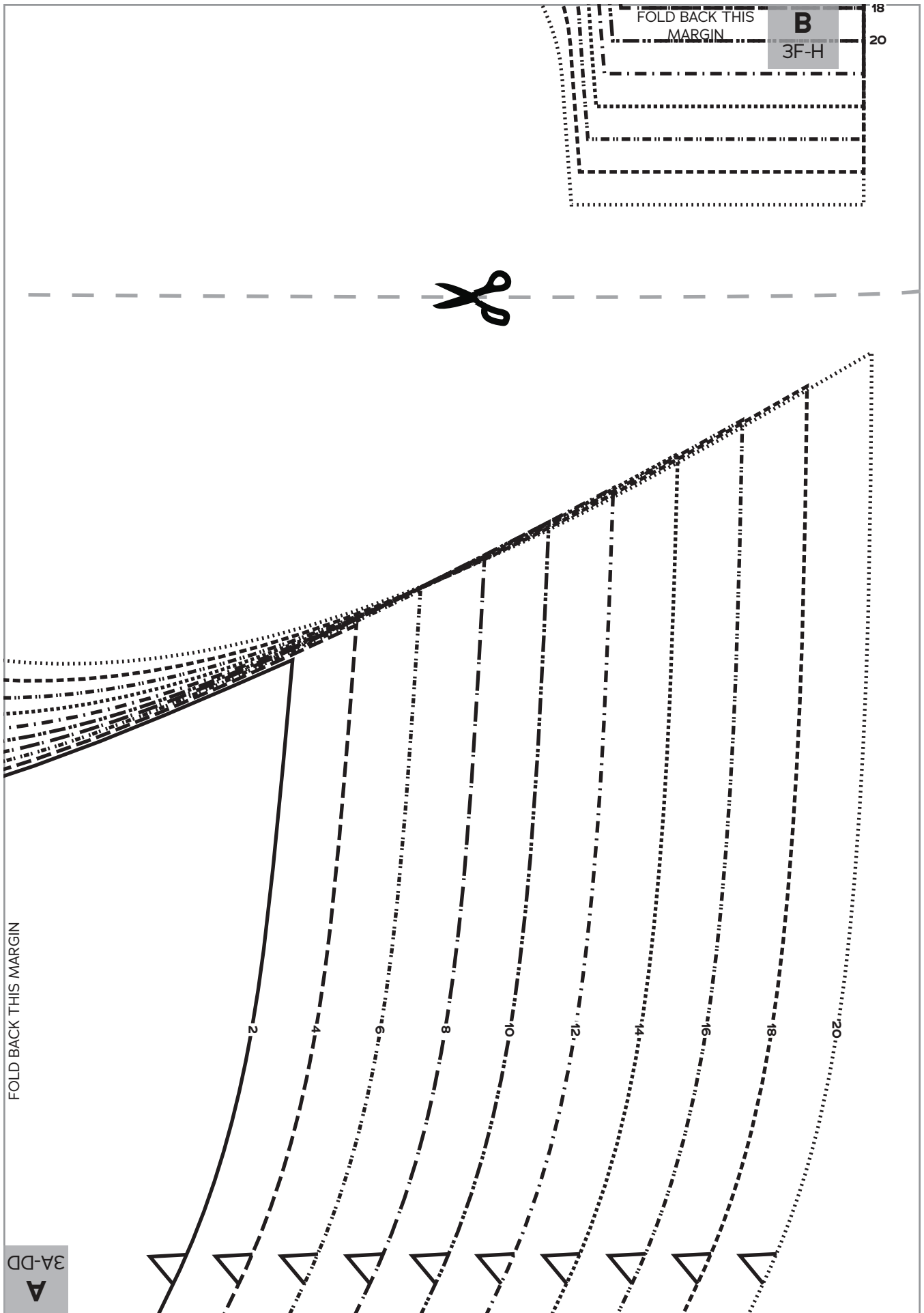
Bodysuit
Front
A-DD Cup
Cut 1 fabric on fold

3

Skipper Dress
and Bodysuit



3A-DD
A



FOLD BACK THIS MARGIN



3A-DD



TAPE THIS EDGE TO THE TOP FRONT PATTERN PIECE OF YOUR CHOICE
(Choose either the Skipper Scoop Neck Front
or the Barbie Top Front from the waistline up)
DO NOT CUT FABRIC ON THIS LINE



TAPE THIS EDGE TO THE TOP BACK PATTERN PIECE OF YOUR CHOICE
(Choose either the Skipper Scoop Neck Back
or the Barbie Top Back from the waistline up)
DO NOT CUT FABRIC ON THIS LINE



*Skipper Dress
and Bodysuit*

4

Bodysuit
Back

Cut 1 fabric on fold

FOLD

A
4

3A-DD
A

FOLD
BACK
THIS
MARGIN



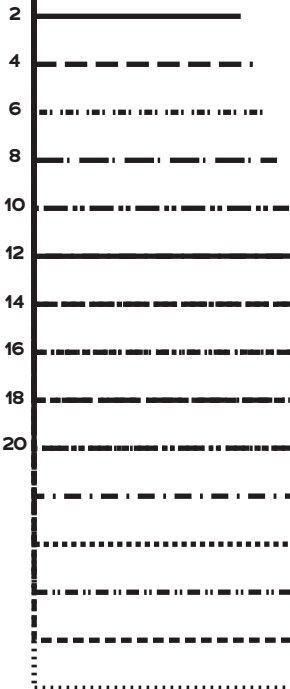
FOLD BACK THIS MARGIN

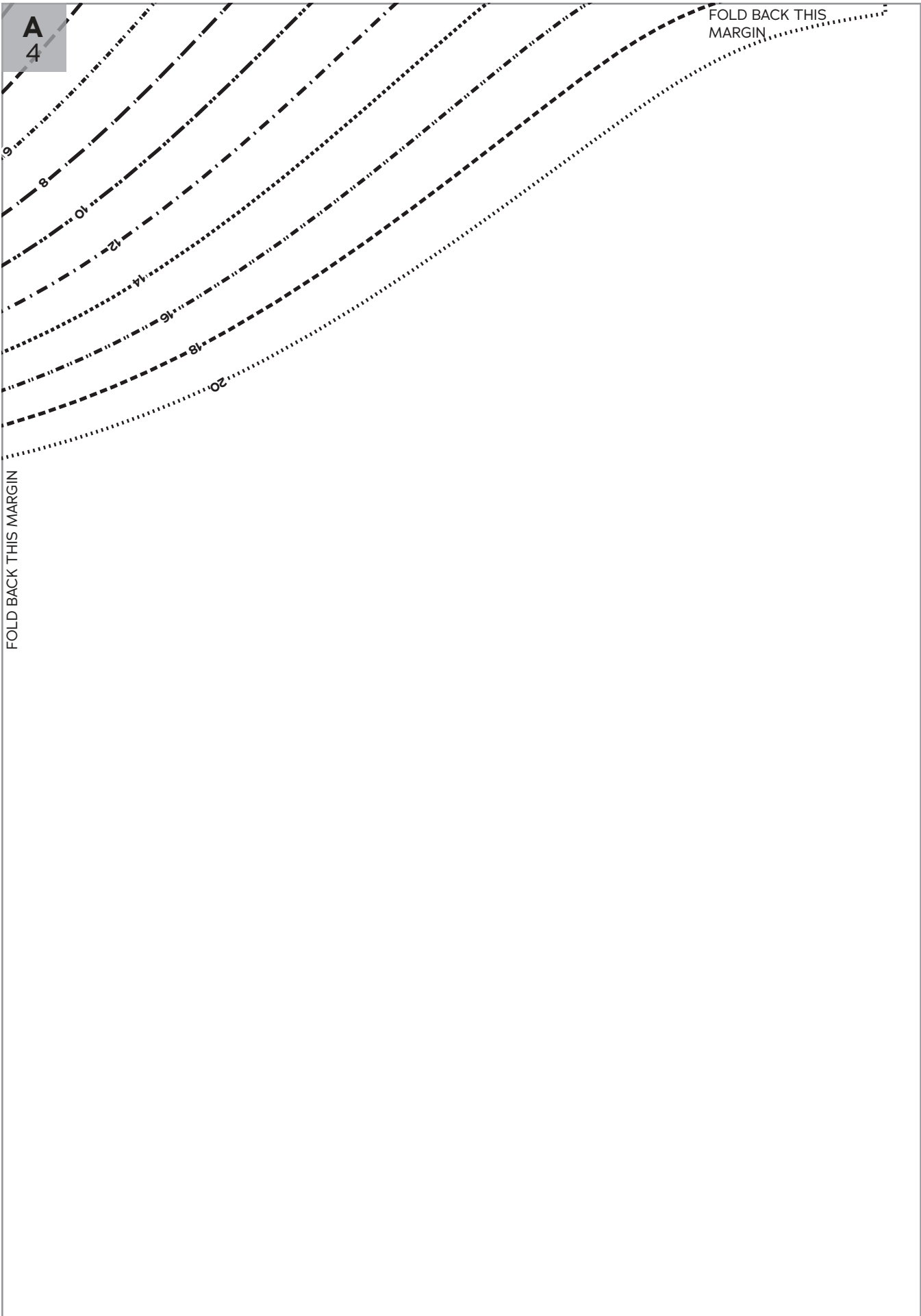
A
4

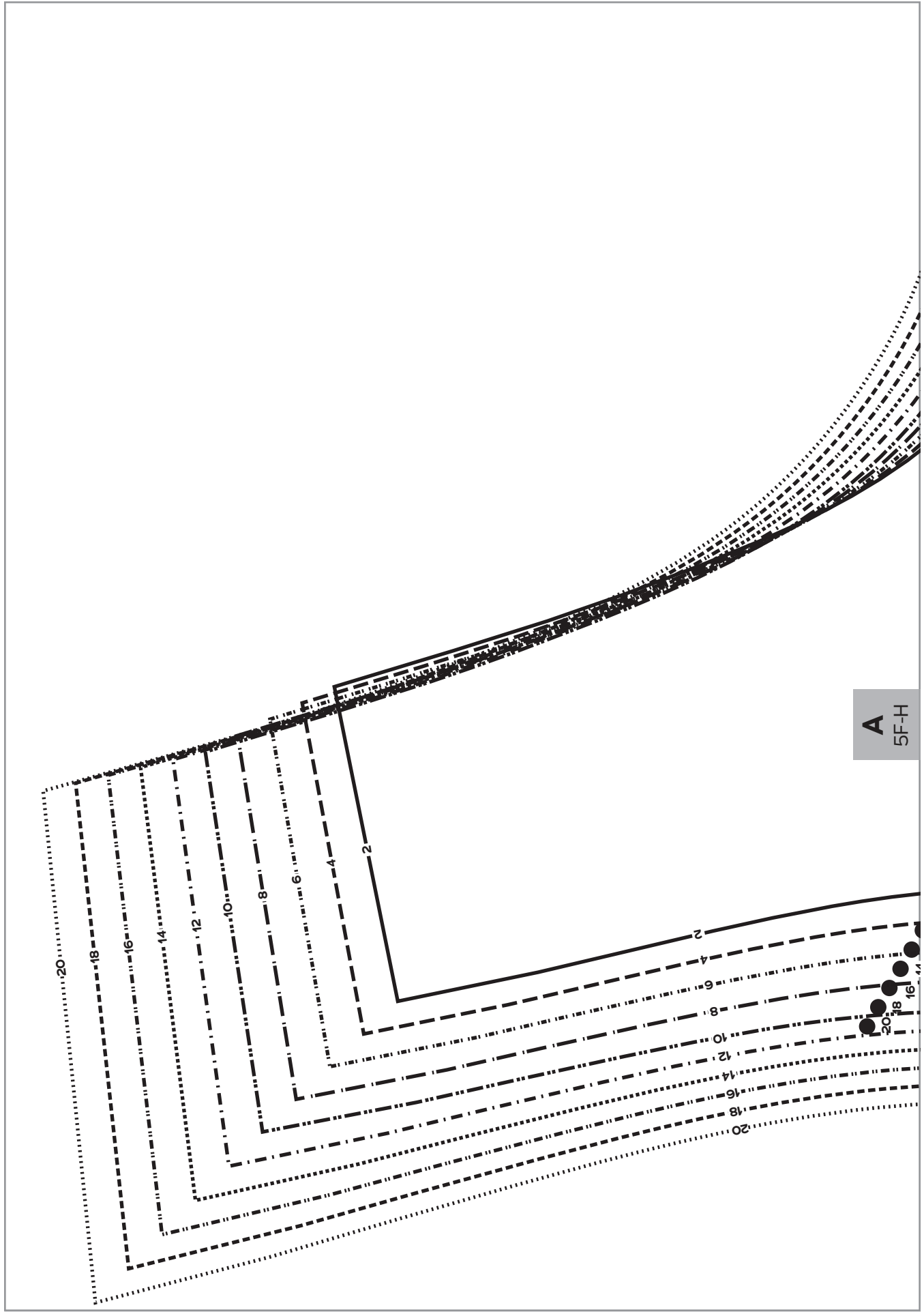
FOLD BACK THIS MARGIN

A
4

CROTCH
OVERLAP





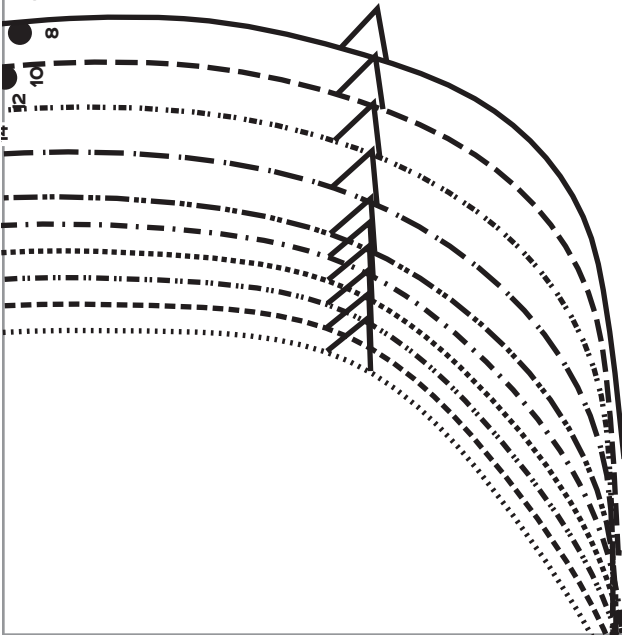


A
5F-H

FOLD BACK THIS MARGIN

A
5F-H

- 12
- 10
- 8
- 6
- 4
- 2



*Skipper Dress
and Bodysuit*

5

Scoop Neck
Top Front
F-H Cup

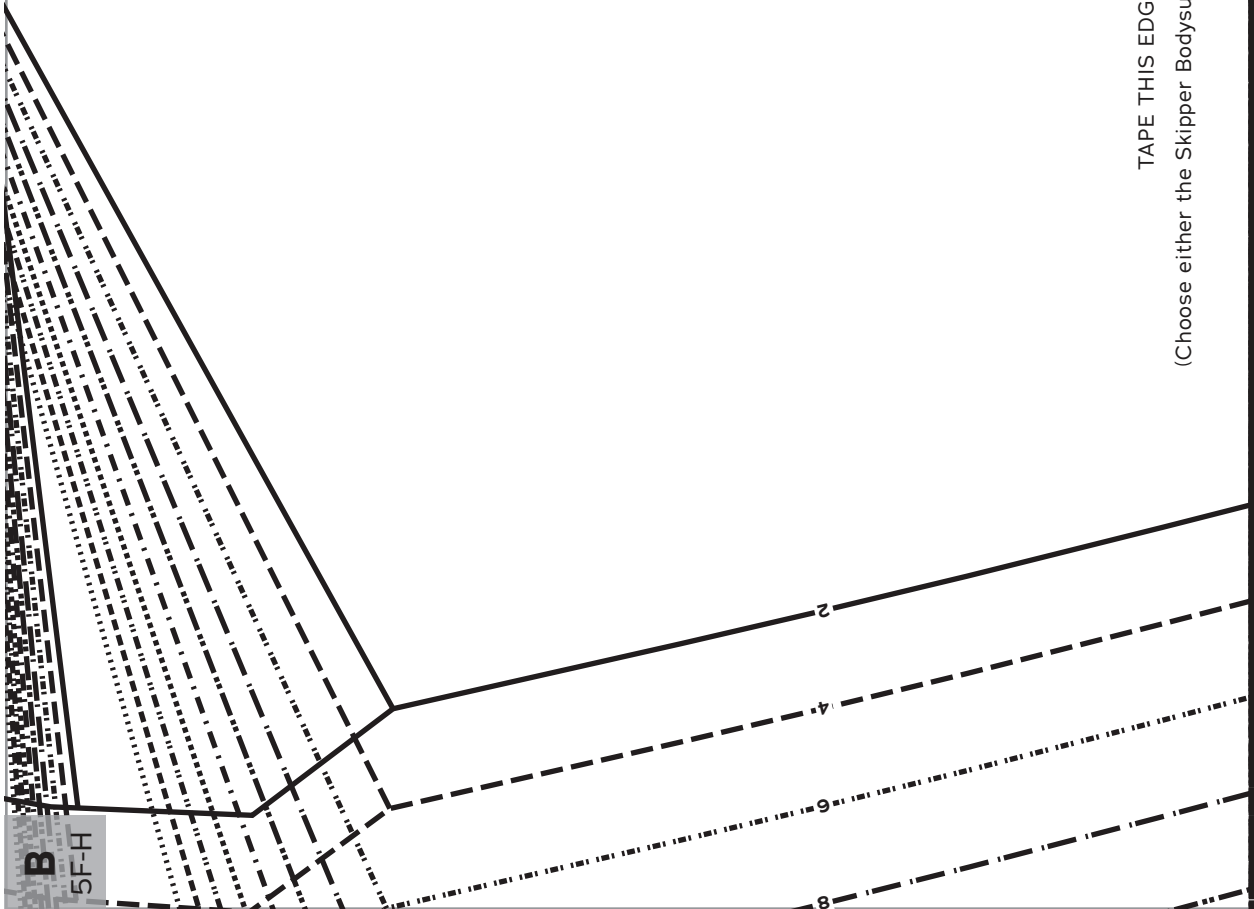
Cut 1 fabric on fold



B
5F-H

FOLD

FOLD BACK THIS MARGIN

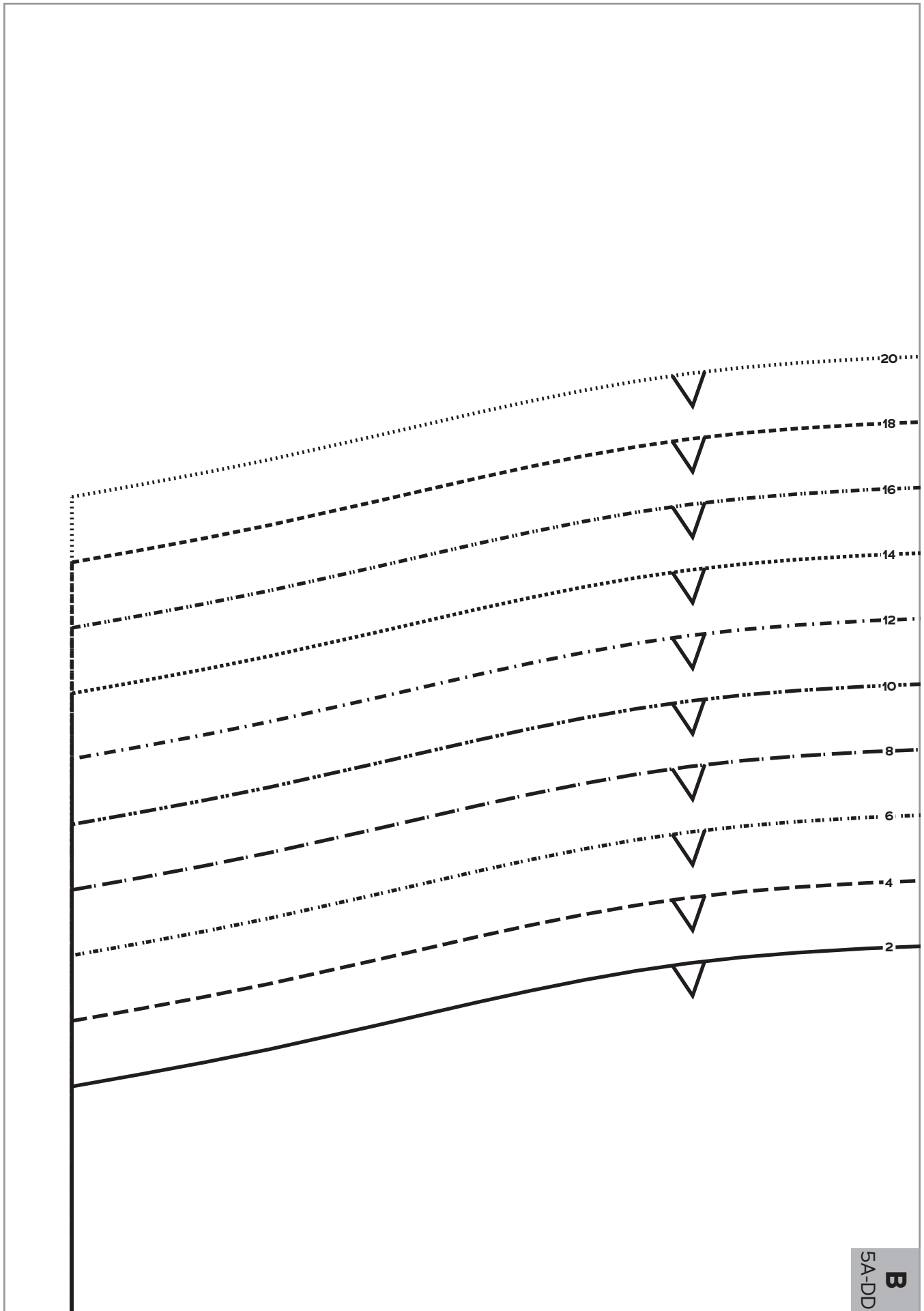


TAPE THIS EDGE TO THE BOTTOM FRONT PATTERN PIECE OF YOUR CHOICE

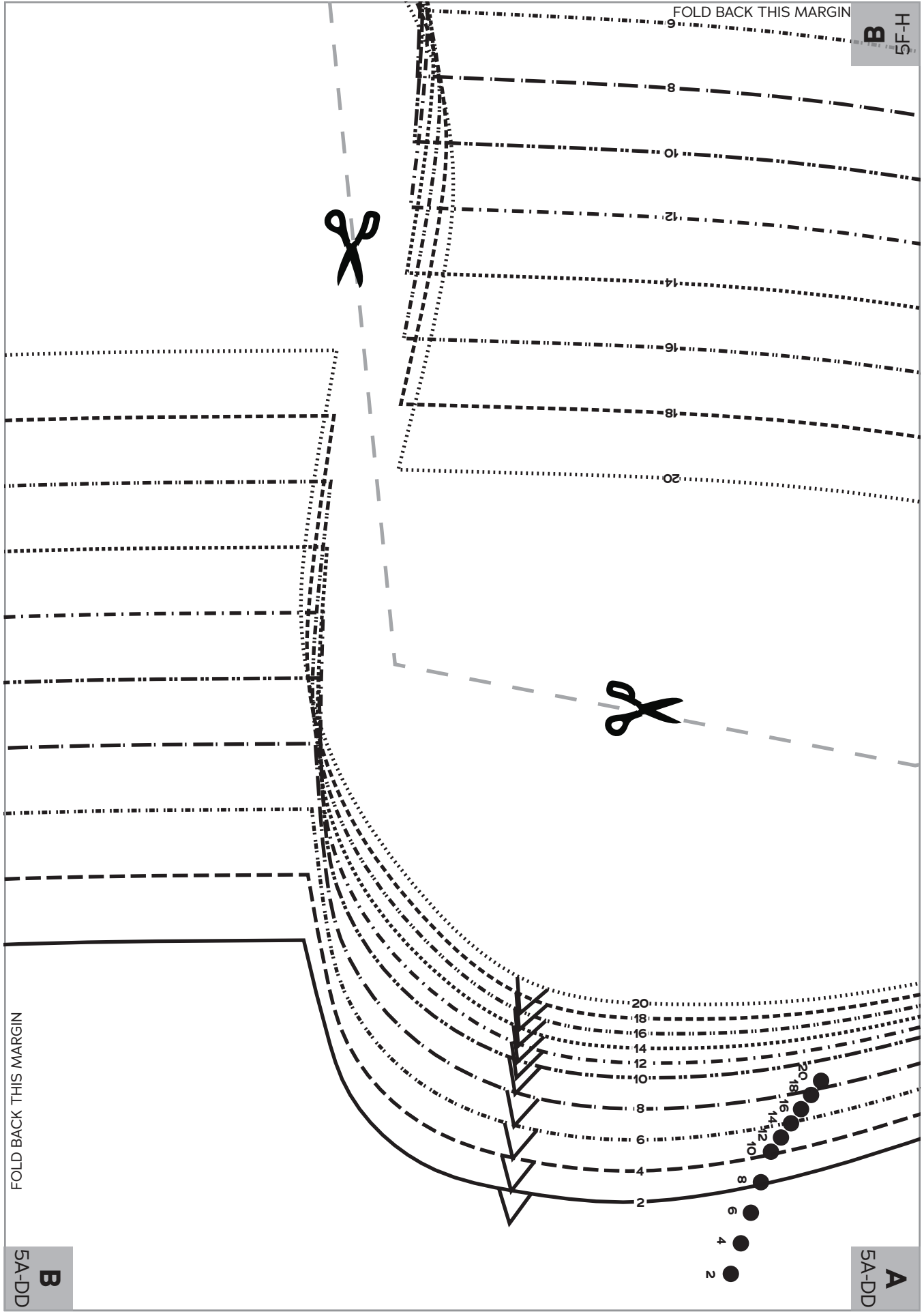
(Choose either the Skipper Bodysuit Front, the Skipper Skirt Front, or the Barbie Top Front from the waistline down)

DO NOT CUT FABRIC ON THIS LINE

B
5F-H



B
5A-DD



B
H-F-5

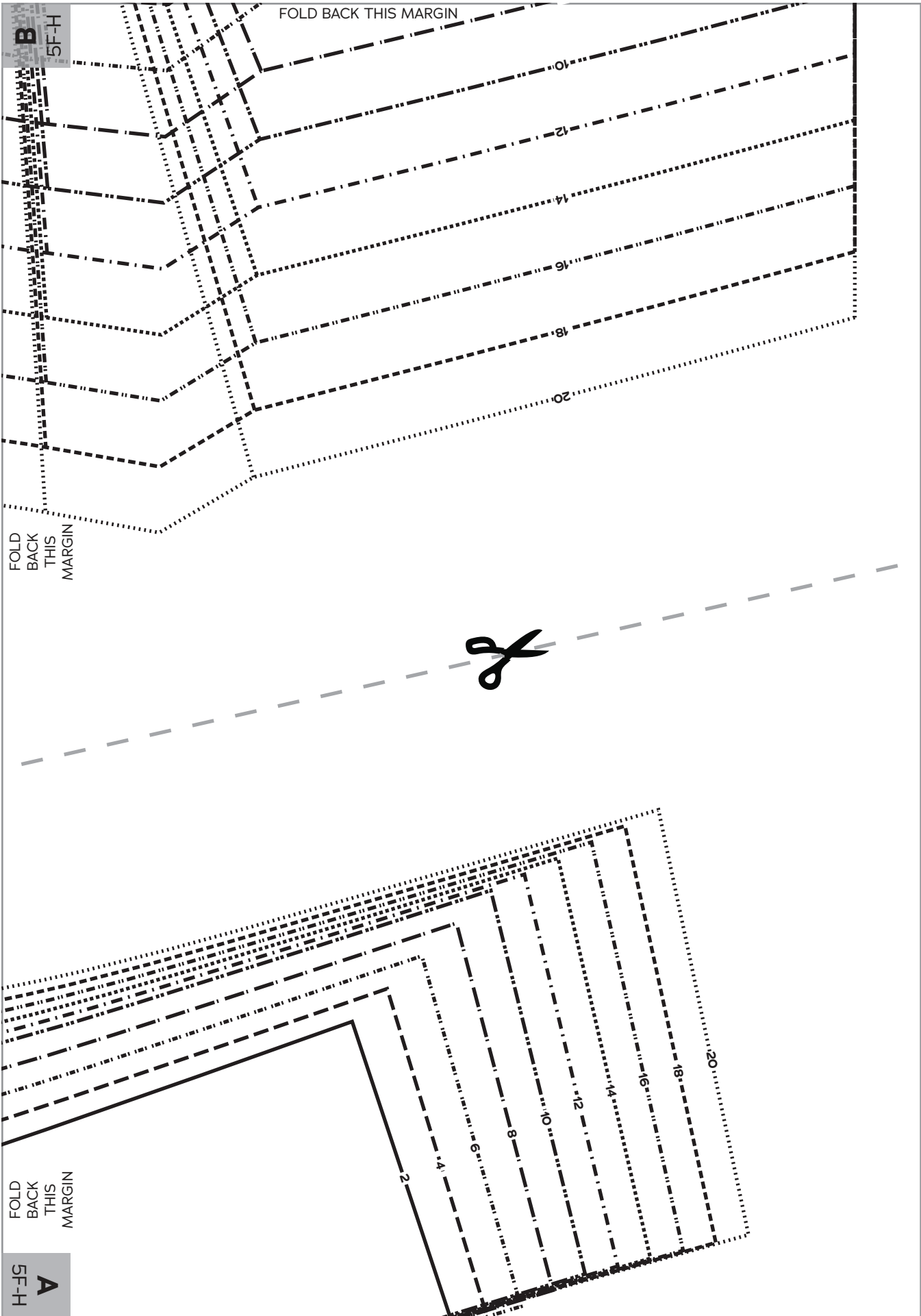
FOLD BACK THIS MARGIN

A
5A-DD

B
5A-DD

FOLD BACK THIS MARGIN

- 2
- 4
- 6
- 8



FOLD BACK THIS MARGIN

TAPE THIS EDGE TO THE BOTTOM FRONT PATTERN PIECE OF YOUR CHOICE
(Choose either the Skipper Bodysuit Front, the Skipper Skirt Front,
or the Barbie Top Front from the waistline down)
DO NOT CUT FABRIC ON THIS LINE

FOLD



A
5A-DD

FOLD BACK THIS MARGIN



*Skipper Dress
and Bodysuit*

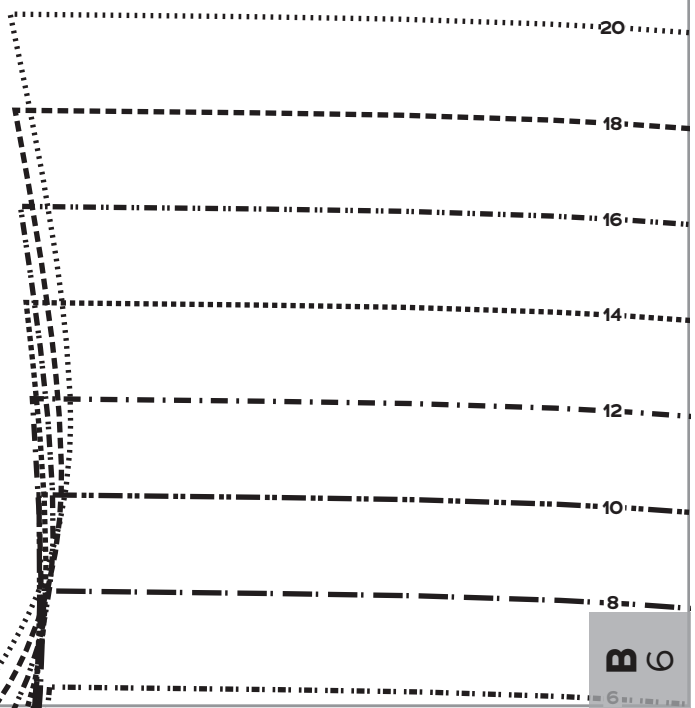
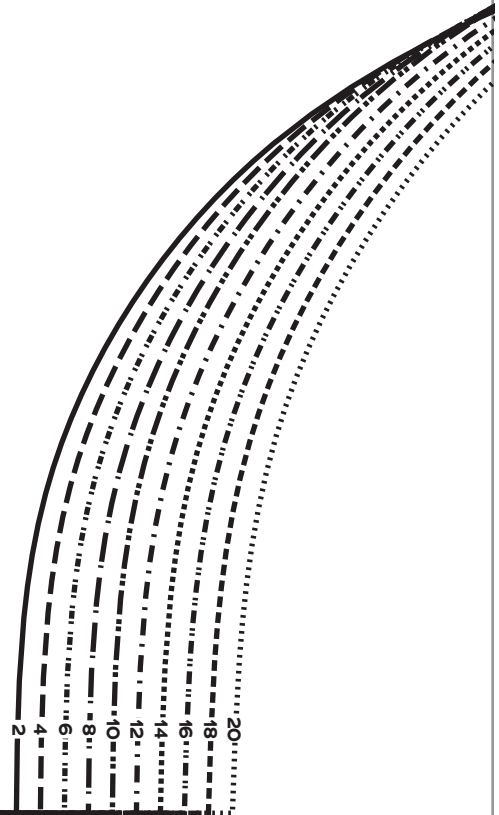
5

Scoop Neck
Top Front
A-DD Cup

Cut 1 fabric on fold

B
5A-DD

FOLD BACK THIS MARGIN



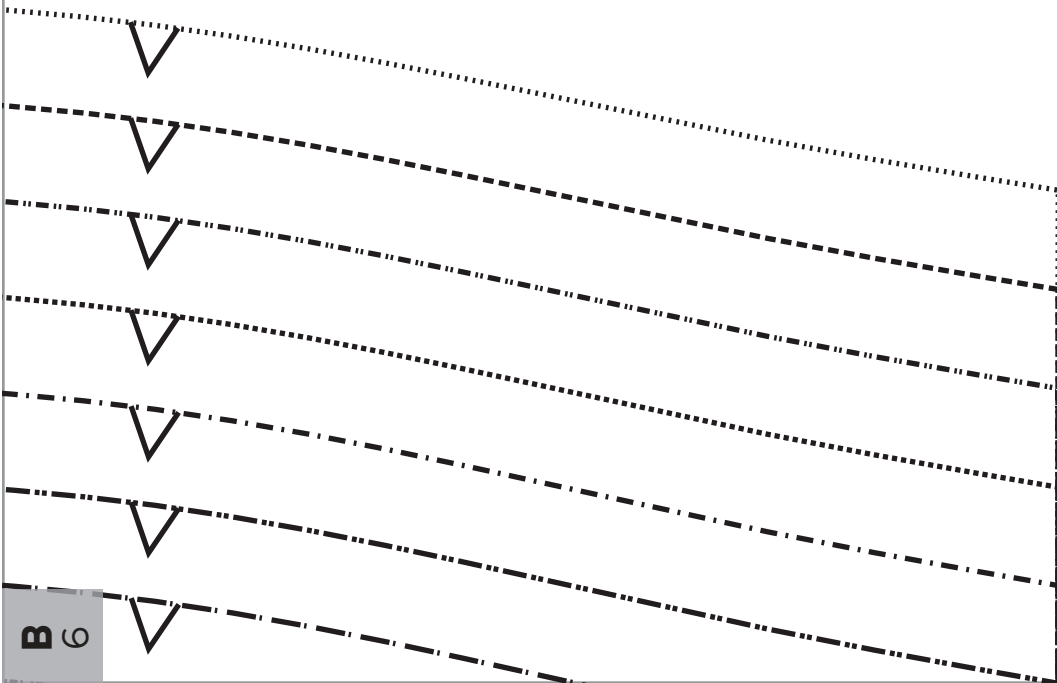
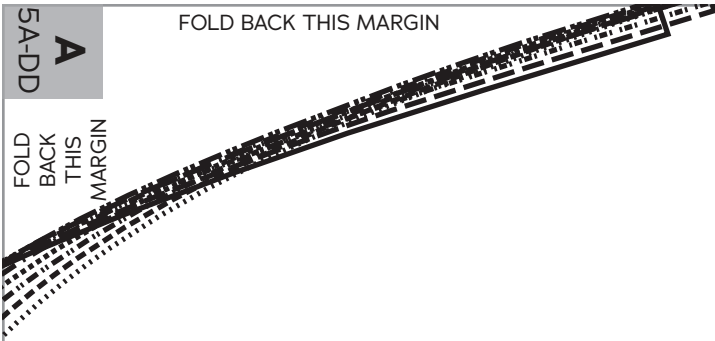
B C

5A-DD

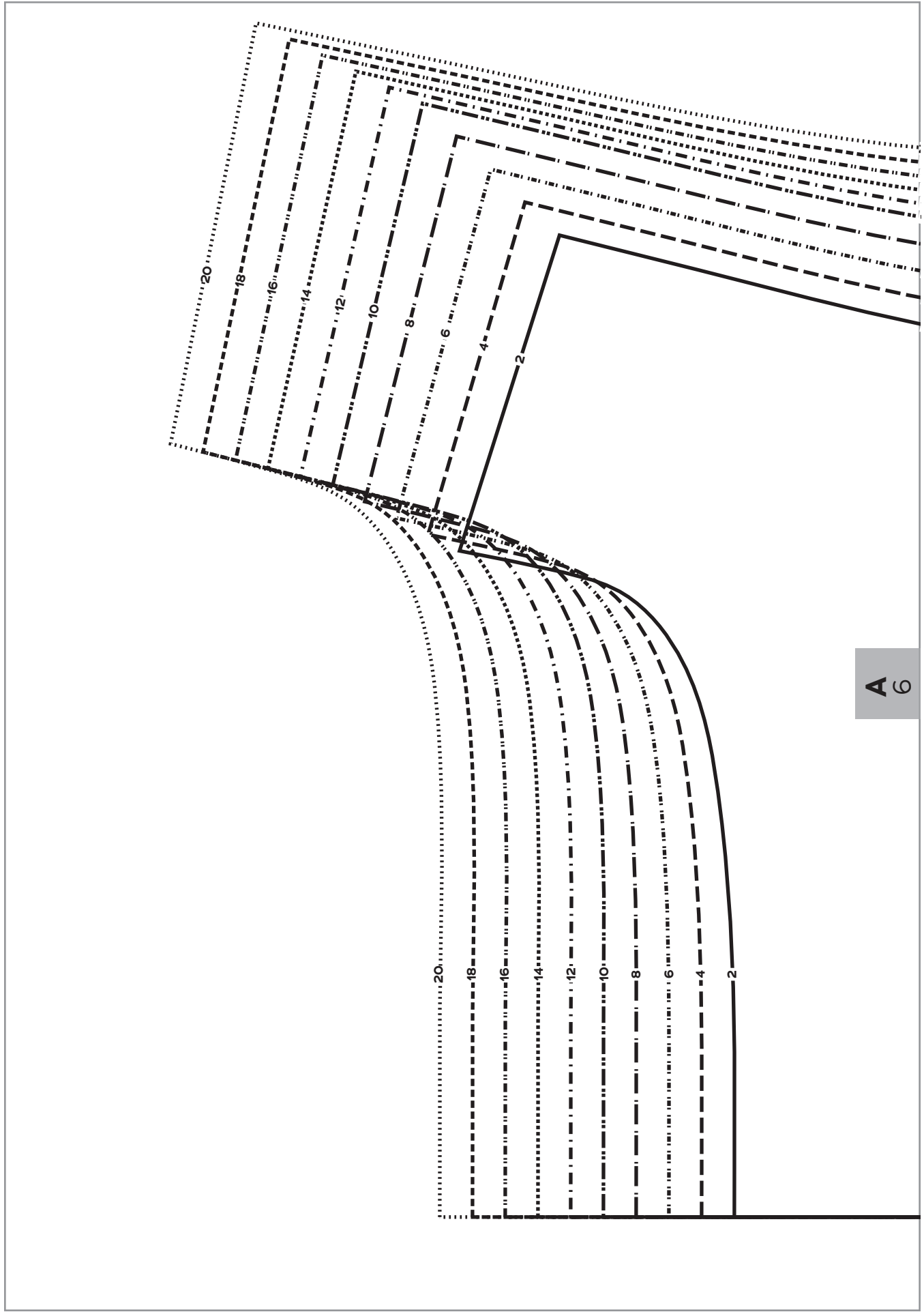
A

FOLD BACK THIS MARGIN

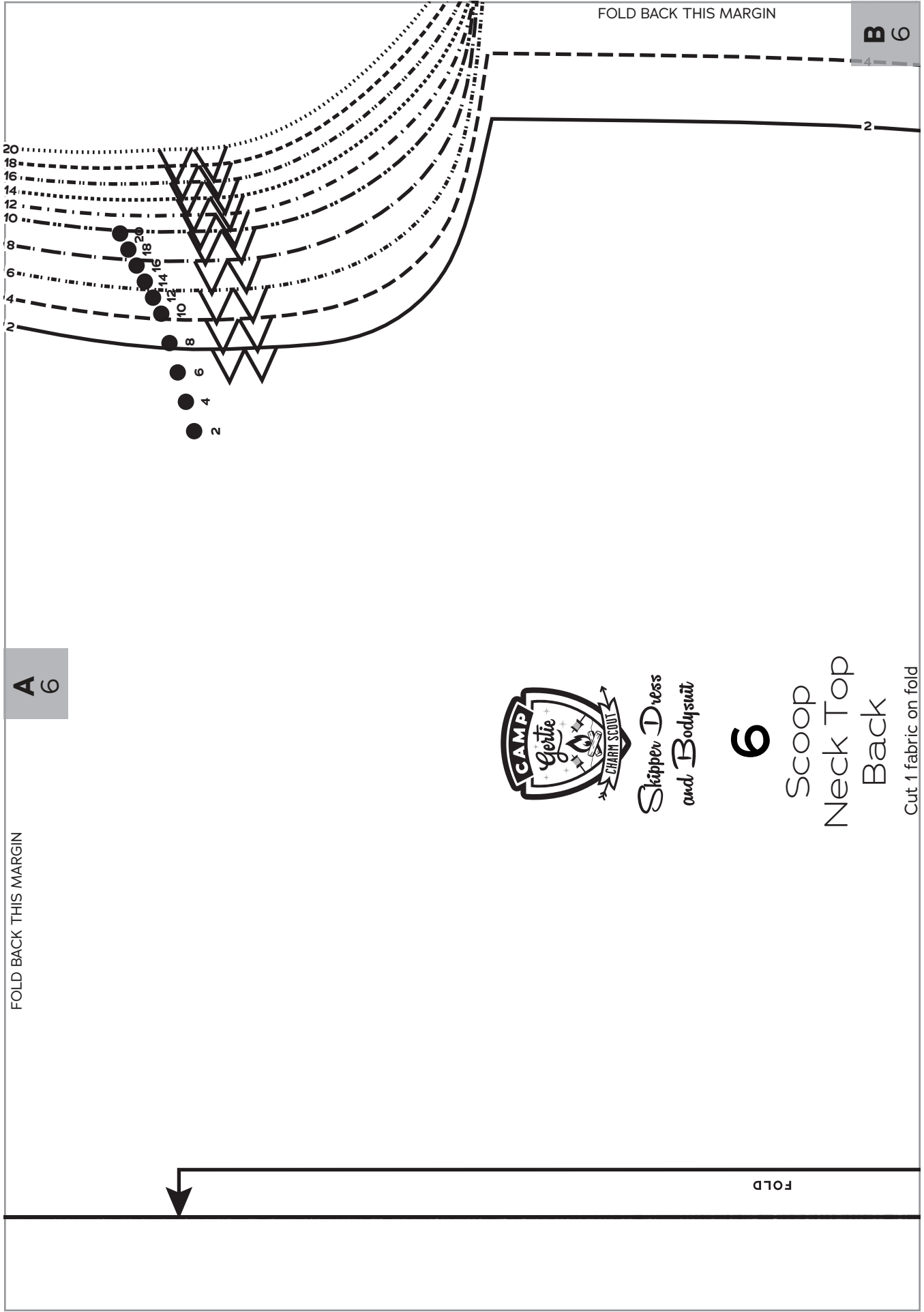
FOLD
BACK
THIS
MARGIN



B G



A
6



A 6

FOLD BACK THIS MARGIN

B C



Skipper Dress
and Bodysuit

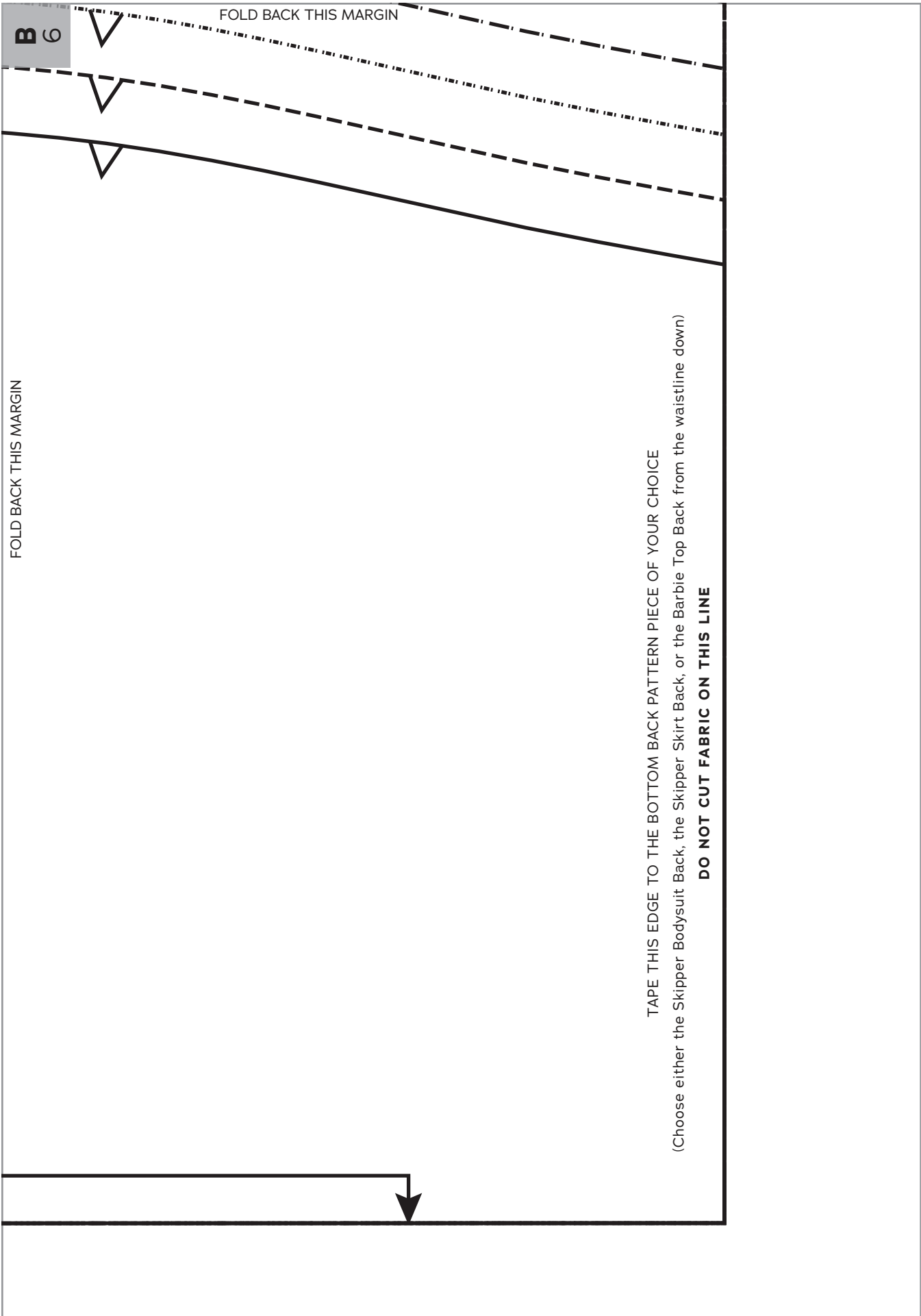
6

Scoop
Neck Top
Back

Cut 1 fabric on fold

FOLD BACK THIS MARGIN

FOLD



FOLD BACK THIS MARGIN

B 6

FOLD BACK THIS MARGIN

TAPE THIS EDGE TO THE BOTTOM BACK PATTERN PIECE OF YOUR CHOICE
(Choose either the Skipper Bodysuit Back, the Skipper Skirt Back, or the Barbie Top Back from the waistline down)
DO NOT CUT FABRIC ON THIS LINE

