

CHARM ARTIST COLLECTIVE
PEGGY BODICE

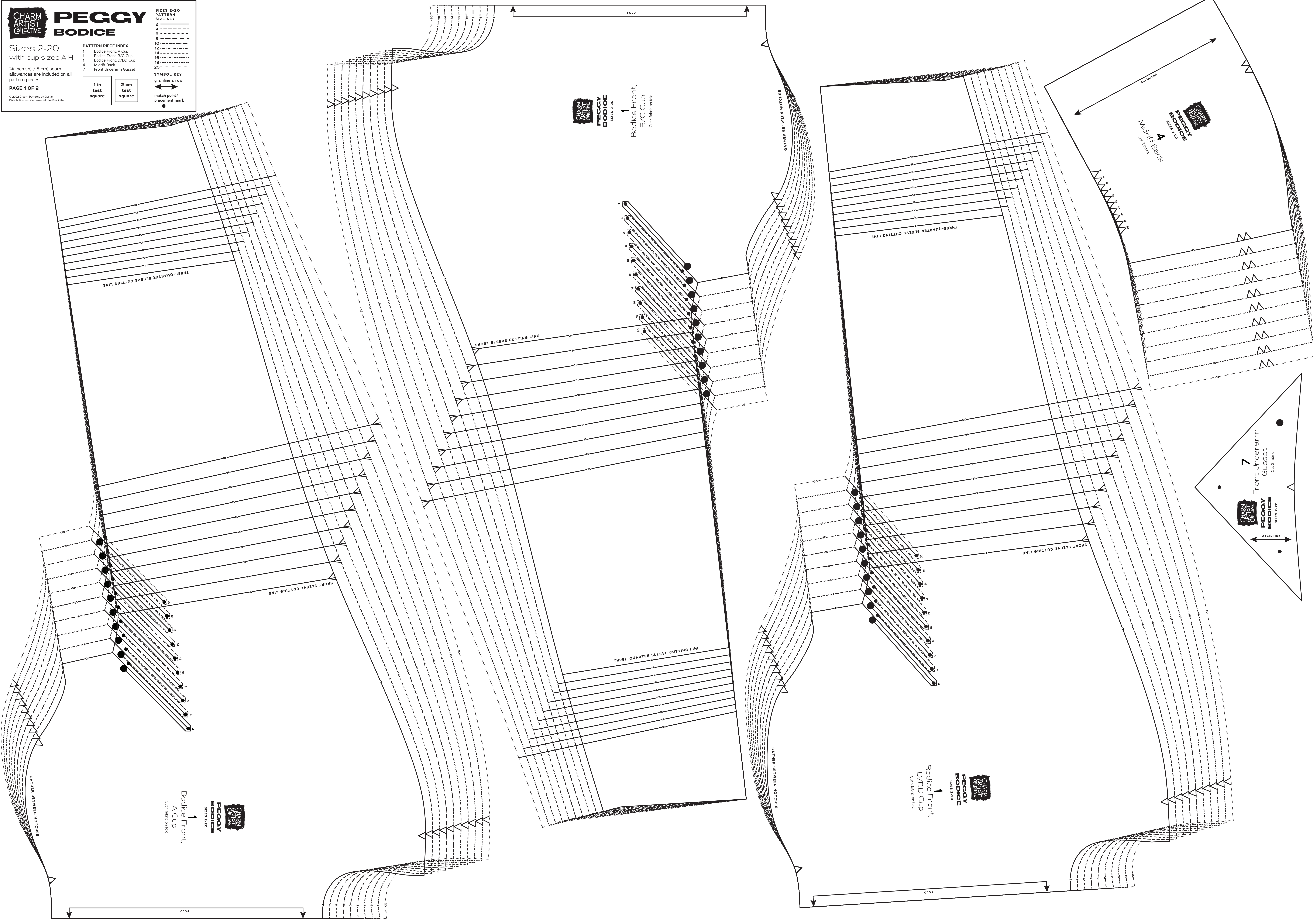
SIZES 2-20
 PATTERN SIZE KEY
 2
 4
 6
 8
 10
 12
 14
 16
 18
 20

PATTERN PIECE INDEX
 1 Bodice Front, A Cup
 1 Bodice Front, B/C Cup
 1 Bodice Front, D/DD Cup
 4 Midriff Back
 7 Front Underarm Gusset

5/8 inch (1.5 cm) seam allowances are included on all pattern pieces.
PAGE 1 OF 2
 © 2022 Charm Patterns by Gertie. Distribution and Commercial Use Prohibited.

1 in test square
 2 cm test square

SYMBOL KEY
 grainline arrow
 match point/
 placement mark



CHARM ARTIST COLLECTIVE
PEGGY BODICE
 SIZES 2-20

1 Bodice Front, B/C Cup
 Cut 1 fabric on fold

CHARM ARTIST COLLECTIVE
PEGGY BODICE
 SIZES 2-20

4 Midriff Back
 Cut 2 fabric

CHARM ARTIST COLLECTIVE
PEGGY BODICE
 SIZES 2-20

7 Front Underarm Gusset
 Cut 2 fabric

CHARM ARTIST COLLECTIVE
PEGGY BODICE
 SIZES 2-20

1 Bodice Front, D/DD Cup
 Cut 1 fabric on fold

CHARM ARTIST COLLECTIVE
PEGGY BODICE
 SIZES 2-20

1 Bodice Front, A Cup
 Cut 1 fabric on fold

CHARM ARTIST COLLECTIVE
PEGGY BODICE

Sizes 2-20
 with cup sizes A-H

5/8 inch (1.5 cm) seam allowances are included on all pattern pieces.

PAGE 2 OF 2

PATTERN PIECE INDEX

- 1 Bodice Front, F/G Cup
- 2 Bodice Back, H Cup
- 3 Bodice Back, Midriff Front
- 4 Front Neck Facing
- 5 Back Neck Facing
- 6 Back Underarm Gusset

SIZES 2-20
PATTERN SIZE KEY

2
4
6
8
10
12
14
16
18
20

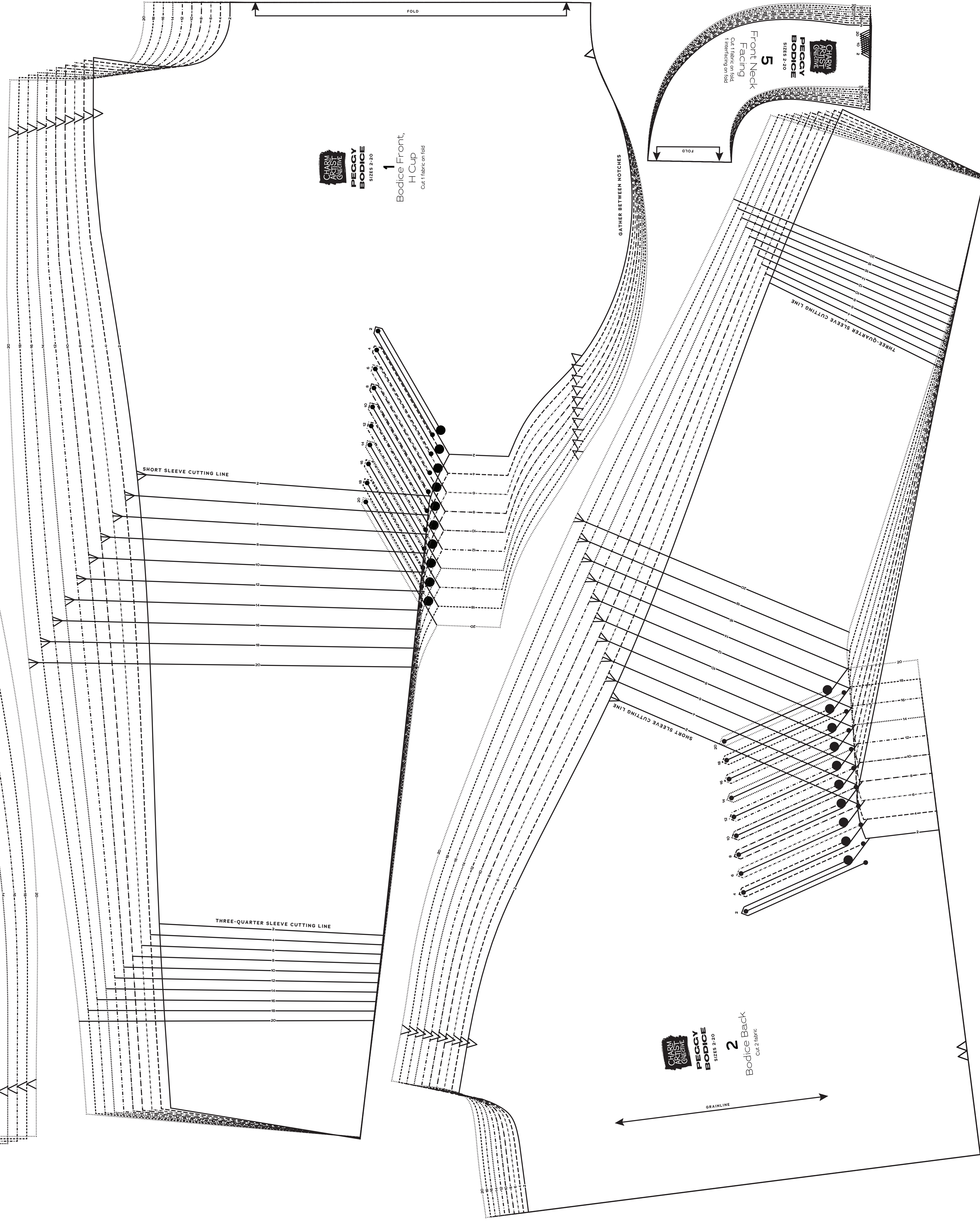
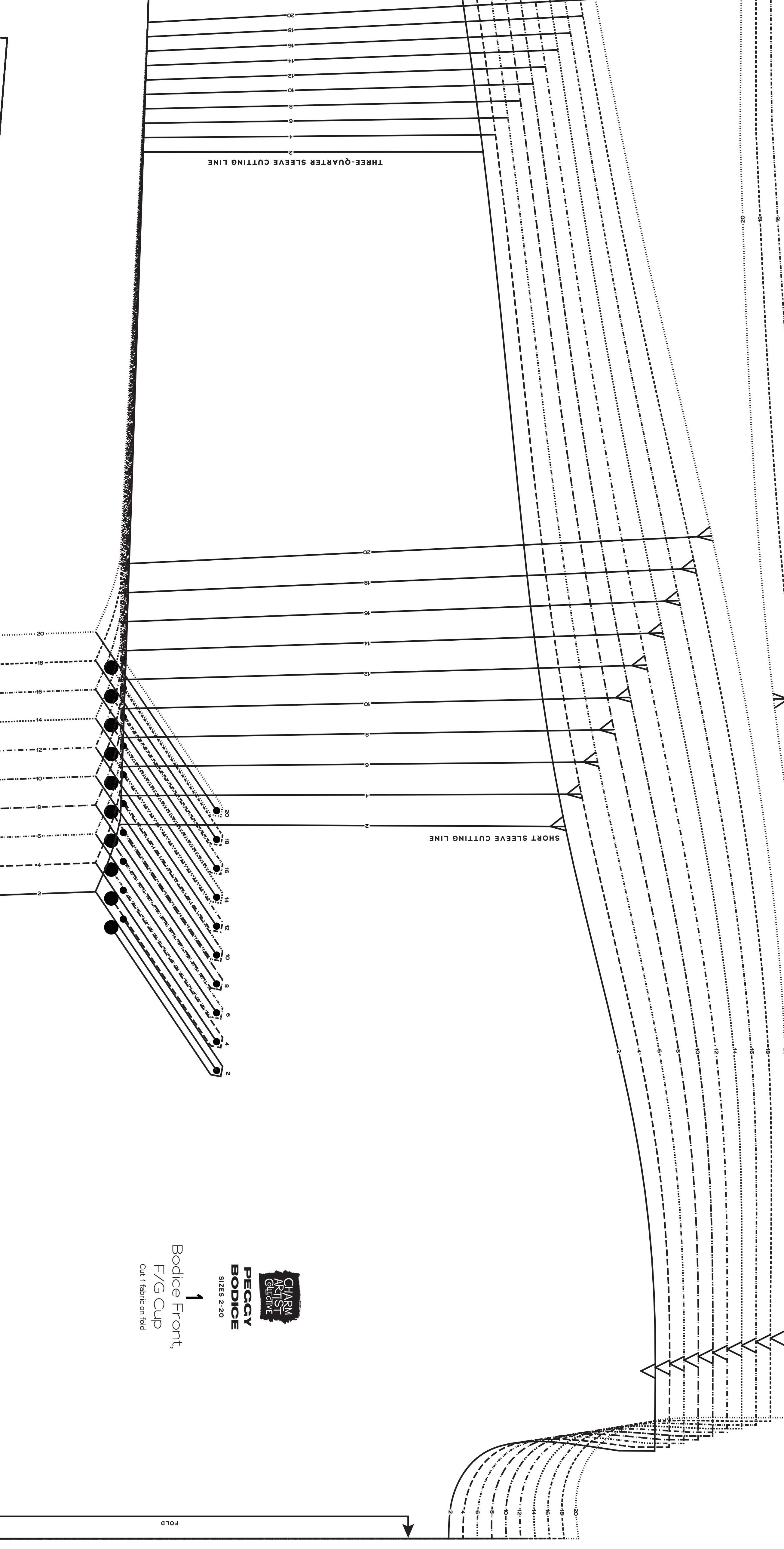
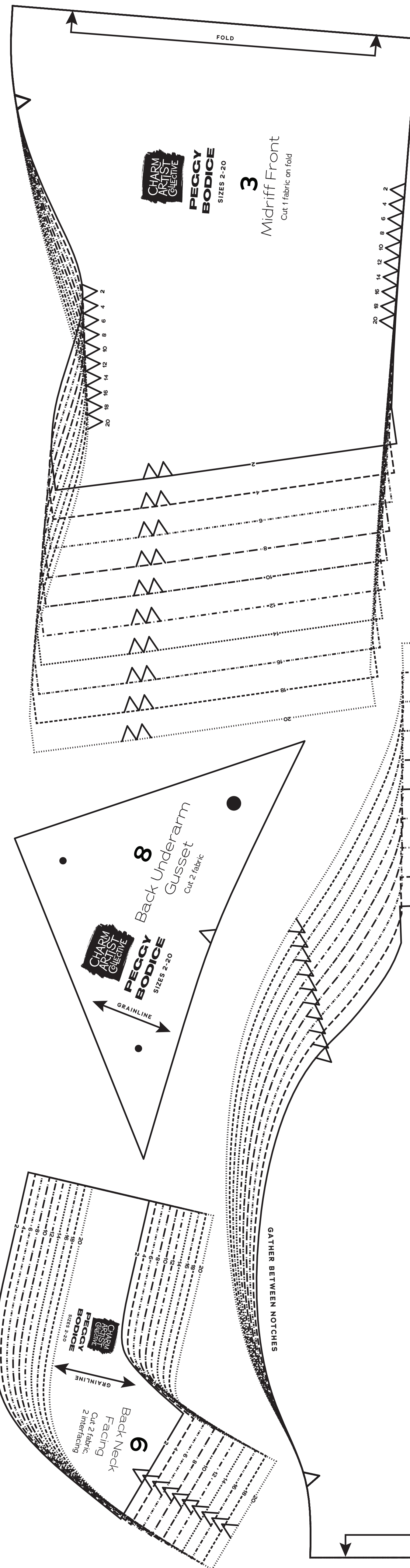
1 in test square

2 cm test square

© 2022 Charm Patterns by Gerie Distribution and Commercial Use Prohibited

SYMBOL KEY

- grainline arrow
- match point/ placement mark



CHARM ARTIST COLLECTIVE
PEGGY BODICE
 SIZES 2-20

1 Bodice Front, H Cup
 Cut fabric on fold

CHARM ARTIST COLLECTIVE
PEGGY BODICE
 SIZES 2-20

2 Bodice Back, H Cup
 Cut fabric on fold