

Sizes 2-20
with cup sizes A-H

5/8 inch (1.5 cm) seam allowances
are included on all pattern pieces.

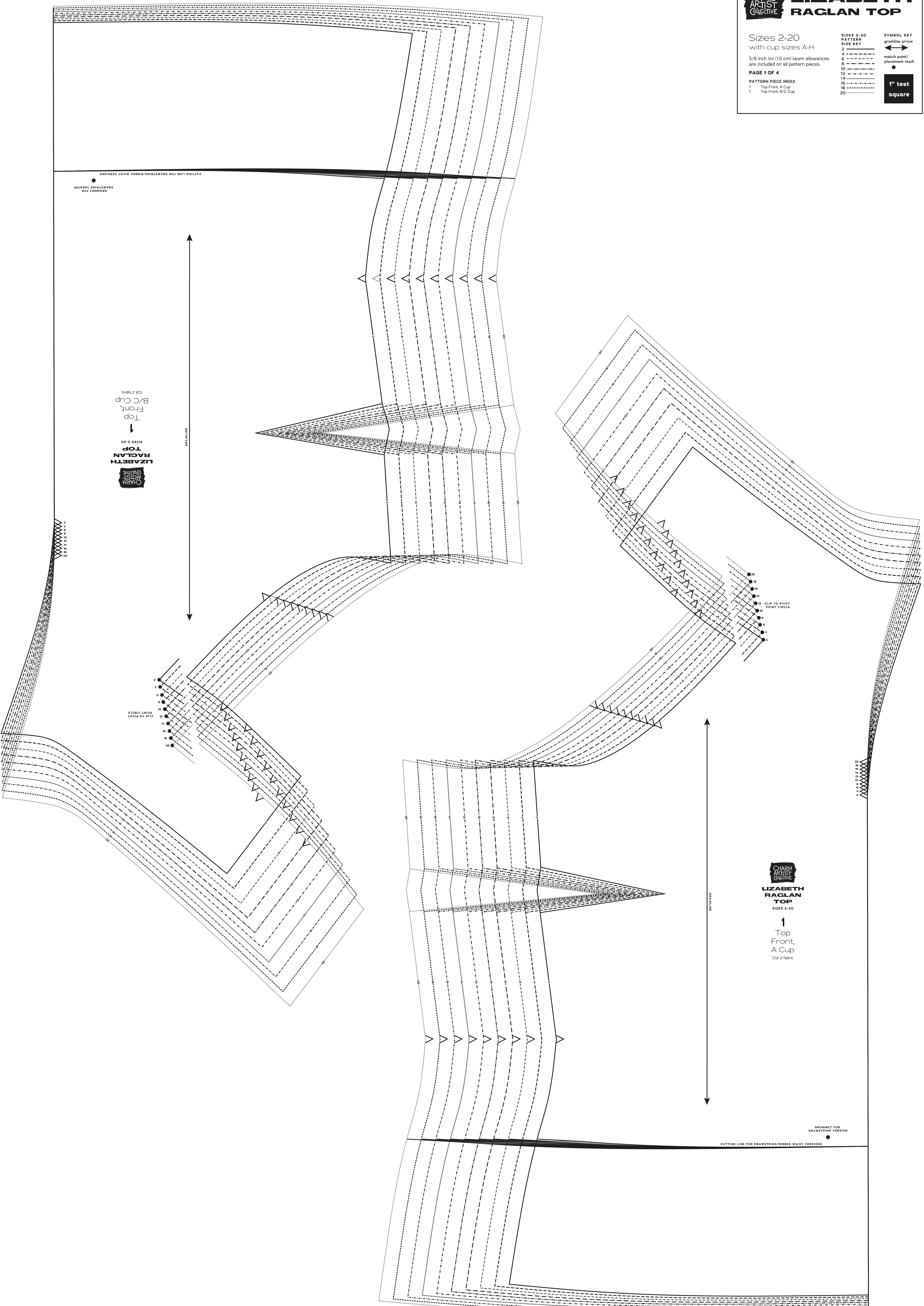
PAGE 1 OF 4

PATTERN PIECE INDEX
1 Top Front, A Cup
1 Top Front, B/C Cup

SIZES 2-20
PATTERN
SIZE KEY
2
4
6
8
10
12
14
16
18
20

SYMBOL KEY
grainline arrow
←→
match point/
placement mark
●

1" test
square



CHARM
ARTIST
COLLECTIVE
**LIZABETH
RAGLAN
TOP**
SIZES 2-20
↓
Top
Front,
B/C Cup
Cut 2 fabric

CHARM
ARTIST
COLLECTIVE
**LIZABETH
RAGLAN
TOP**
SIZES 2-20
1
Top
Front,
A Cup
Cut 2 fabric

GROMMET FOR
DRAWSTRING VERSION

CUTTING LINE FOR DRAWSTRING/RIBBED WAIST VERSIONS

Sizes 2-20
with cup sizes A-H

5/8 inch (1.5 cm) seam allowances
are included on all pattern pieces.

PAGE 2 OF 4

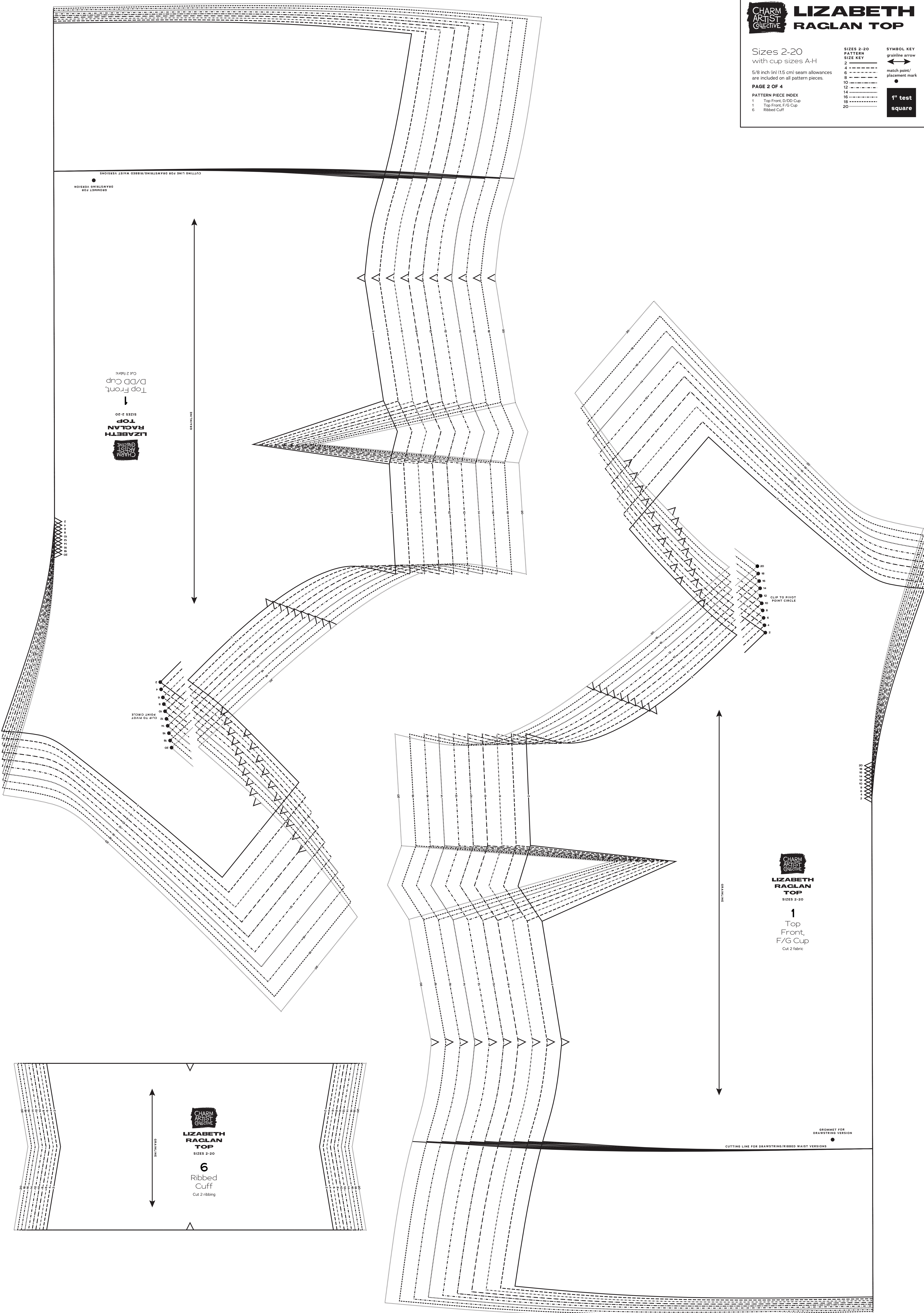
PATTERN PIECE INDEX
1 Top Front, D/DD Cup
1 Top Front, F/G Cup
6 Ribbed Cuff

SIZES 2-20
PATTERN
SIZE KEY

| | |
|----|-------|
| 2 | ----- |
| 4 | ----- |
| 6 | ----- |
| 8 | ----- |
| 10 | ----- |
| 12 | ----- |
| 14 | ----- |
| 16 | ----- |
| 18 | ----- |
| 20 | ----- |

SYMBOL KEY
grainline arrow
match point/
placement mark

1" test
square



CHARM
ARTIST
COLLECTIVE
**LIZABETH
RAGLAN
TOP**
SIZES 2-20
↓
Top Front,
D/DD Cup
Cut 2 fabric

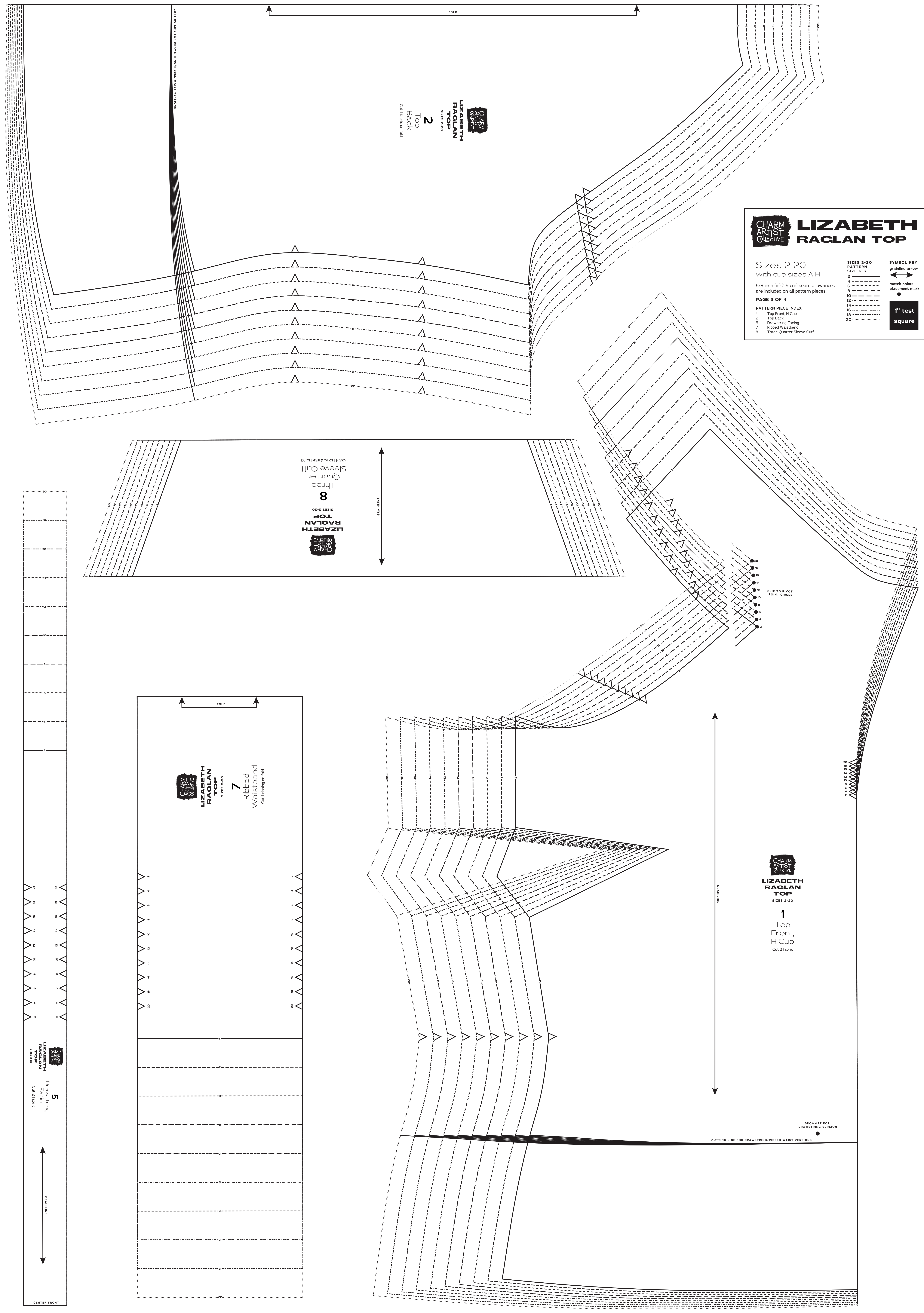
CLIP TO PIVOT
POINT CIRCLE

CHARM
ARTIST
COLLECTIVE
**LIZABETH
RAGLAN
TOP**
SIZES 2-20
↓
1
Top
Front,
F/G Cup
Cut 2 fabric

CHARM
ARTIST
COLLECTIVE
**LIZABETH
RAGLAN
TOP**
SIZES 2-20
↓
6
Ribbed
Cuff
Cut 2 ribbing

GRADUATED FOR
DRAWING VERSION

CUTTING LINE FOR DRAWING/RIBBED WAIST VERSIONS



CHARM ARTIST COLLECTIVE

LIZABETH RAGLAN TOP

Sizes 2-20
with cup sizes A-H

5/8 inch (1.5 cm) seam allowances are included on all pattern pieces.

PAGE 3 OF 4

PATTERN PIECE INDEX

- 1 Top Front, H Cup
- 2 Top Back
- 5 Drawstring Facing
- 7 Ribbed Waistband
- 8 Three Quarter Sleeve Cuff

SIZES 2-20 PATTERN SIZE KEY

- 2 —————
- 4 - - - - -
- 6 - - - - -
- 8 - - - - -
- 10 - - - - -
- 12 - - - - -
- 14 - - - - -
- 16 - - - - -
- 18 - - - - -
- 20 - - - - -

SYMBOL KEY

- grainline arrow
- match point/ placement mark
- 1" test square

CHARM ARTIST COLLECTIVE

LIZABETH RAGLAN TOP

SIZES 2-20

2

Top Back

Cut 1 fabric on fold

CHARM ARTIST COLLECTIVE

LIZABETH RAGLAN TOP

SIZES 2-20

8

Three Quarter Sleeve Cuff

Cut 4 fabric, 2 interfacing

CHARM ARTIST COLLECTIVE

LIZABETH RAGLAN TOP

SIZES 2-20

7

Ribbed Waistband

Cut 1 fabric on fold

CHARM ARTIST COLLECTIVE

LIZABETH RAGLAN TOP

SIZES 2-20

1

Top Front, H Cup

Cut 2 fabric

CHARM ARTIST COLLECTIVE

LIZABETH RAGLAN TOP

SIZES 2-20

5

Drawstring Facing

Cut 2 fabric

CENTER FRONT

GROMET FOR DRAWSSTRING VERSION

CUTTING LINE FOR DRAWSSTRING/RIBBED WAIST VERSIONS

Sizes 2-20
with cup sizes A-H

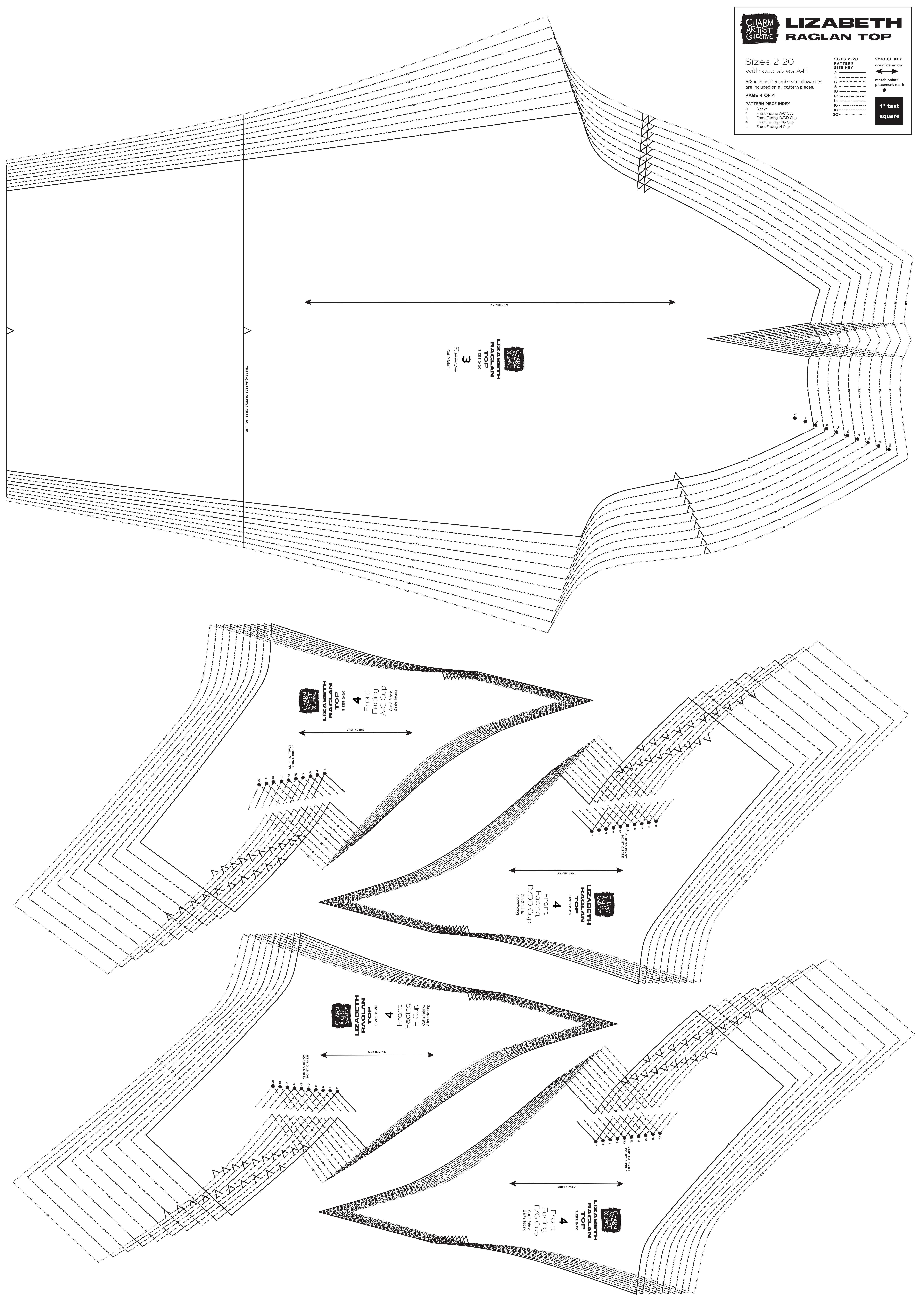
5/8 inch (1.5 cm) seam allowances
are included on all pattern pieces.

PAGE 4 OF 4

PATTERN PIECE INDEX
3 Sleeve
4 Front Facing, A-C Cup
4 Front Facing, D/DD Cup
4 Front Facing, F/G Cup
4 Front Facing, H Cup

**SIZES 2-20
PATTERN
SIZE KEY**
2
4
6
8
10
12
14
16
18
20

SYMBOL KEY
grainline arrow
match point/
placement mark
1" test
square



CHARM
ARTIST
COLLECTIVE
**LIZABETH
RAGLAN
TOP**
SIZES 2-20
3
Sleeve
Cut 2 fabric

GRAINLINE

THREE QUARTER SLEEVE CUTTING LINE

CHARM
ARTIST
COLLECTIVE
**LIZABETH
RAGLAN
TOP**
SIZES 2-20
4
Front
Facing,
A-C Cup
Cut 2 fabric,
2 reinforcing

GRAINLINE

CLIP TO PRINT
POINT CHECK

CHARM
ARTIST
COLLECTIVE
**LIZABETH
RAGLAN
TOP**
SIZES 2-20
4
Front
Facing,
D/DD Cup
Cut 2 fabric,
2 reinforcing

GRAINLINE

CLIP TO PRINT
POINT CHECK

CHARM
ARTIST
COLLECTIVE
**LIZABETH
RAGLAN
TOP**
SIZES 2-20
4
Front
Facing,
H Cup
Cut 2 fabric,
2 reinforcing

GRAINLINE

CLIP TO PRINT
POINT CHECK

CHARM
ARTIST
COLLECTIVE
**LIZABETH
RAGLAN
TOP**
SIZES 2-20
4
Front
Facing,
F/G Cup
Cut 2 fabric,
2 reinforcing

GRAINLINE

CLIP TO PRINT
POINT CHECK