

FOOL'S JEWEL 3



After an eye-opening trip across the city, Finn has finally arrived at his, now her, destination.

FINALLY. I'M HERE. PHILLIPS PRODUCTIONS.

Chip Phillips is a legend in the field of movie special effects, and made the Giga-Beast suit back in the day.

Finn was hoping that he might have been able to help track down the missing suit, and it's wearer.



HEY. THERE'S THE SUIT! WAIT. IF THIS IS THE SUIT...

WHERE THE HELL IS EDDIE?!

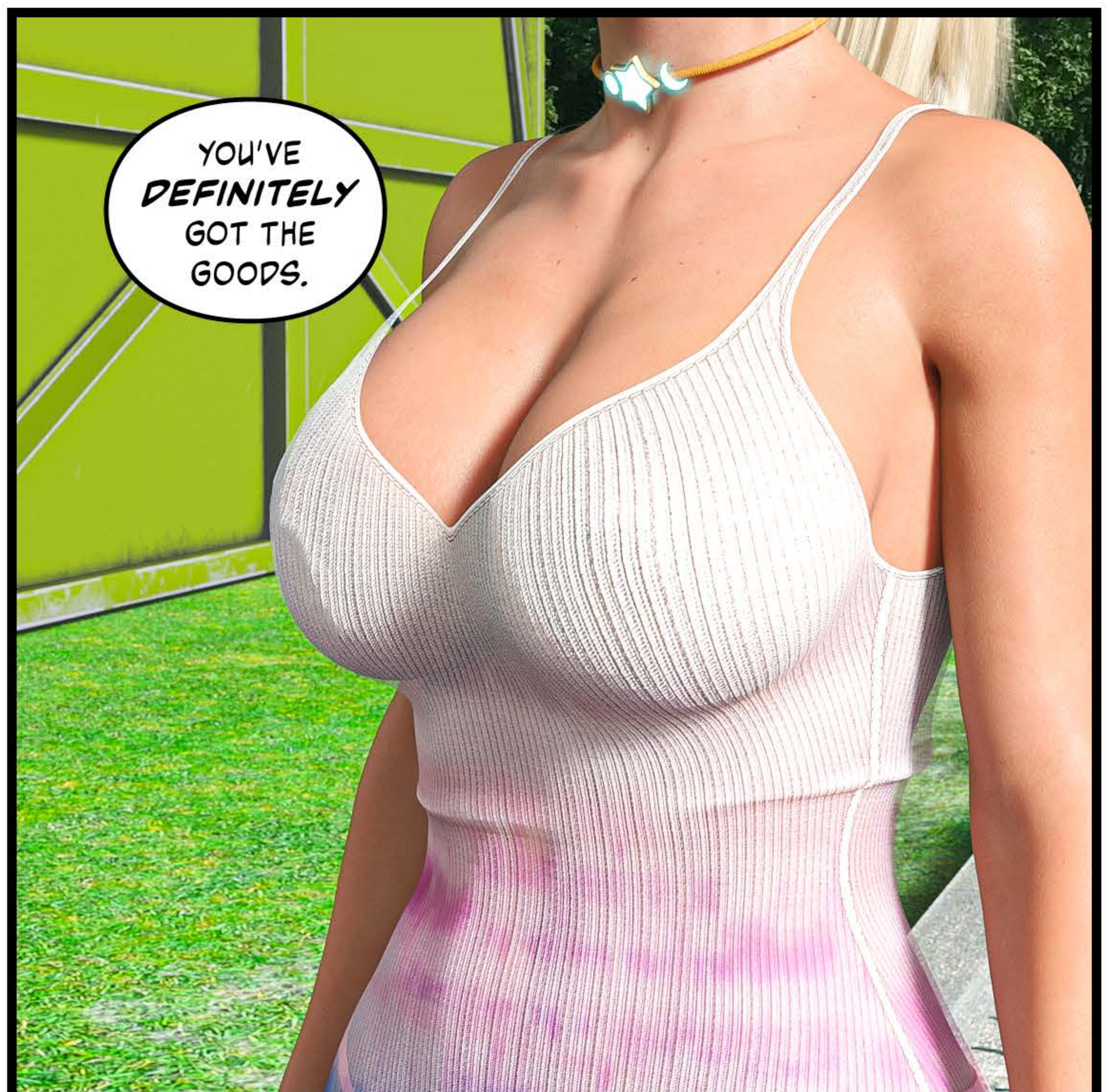
FOOL'S JEWEL 3



FOOL'S JEWEL 3



FOOL'S JEWEL 3



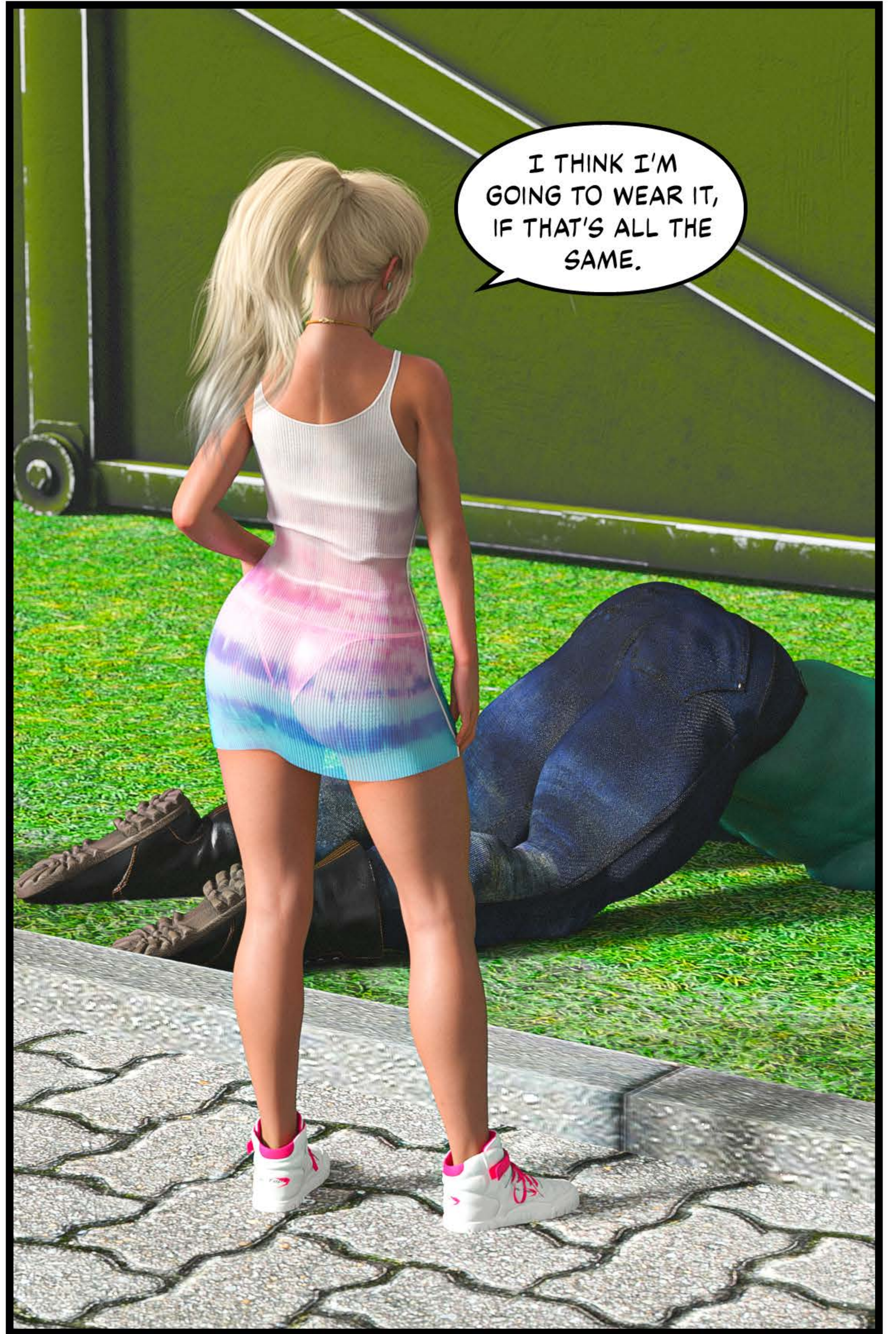
FOOL'S JEWEL 3



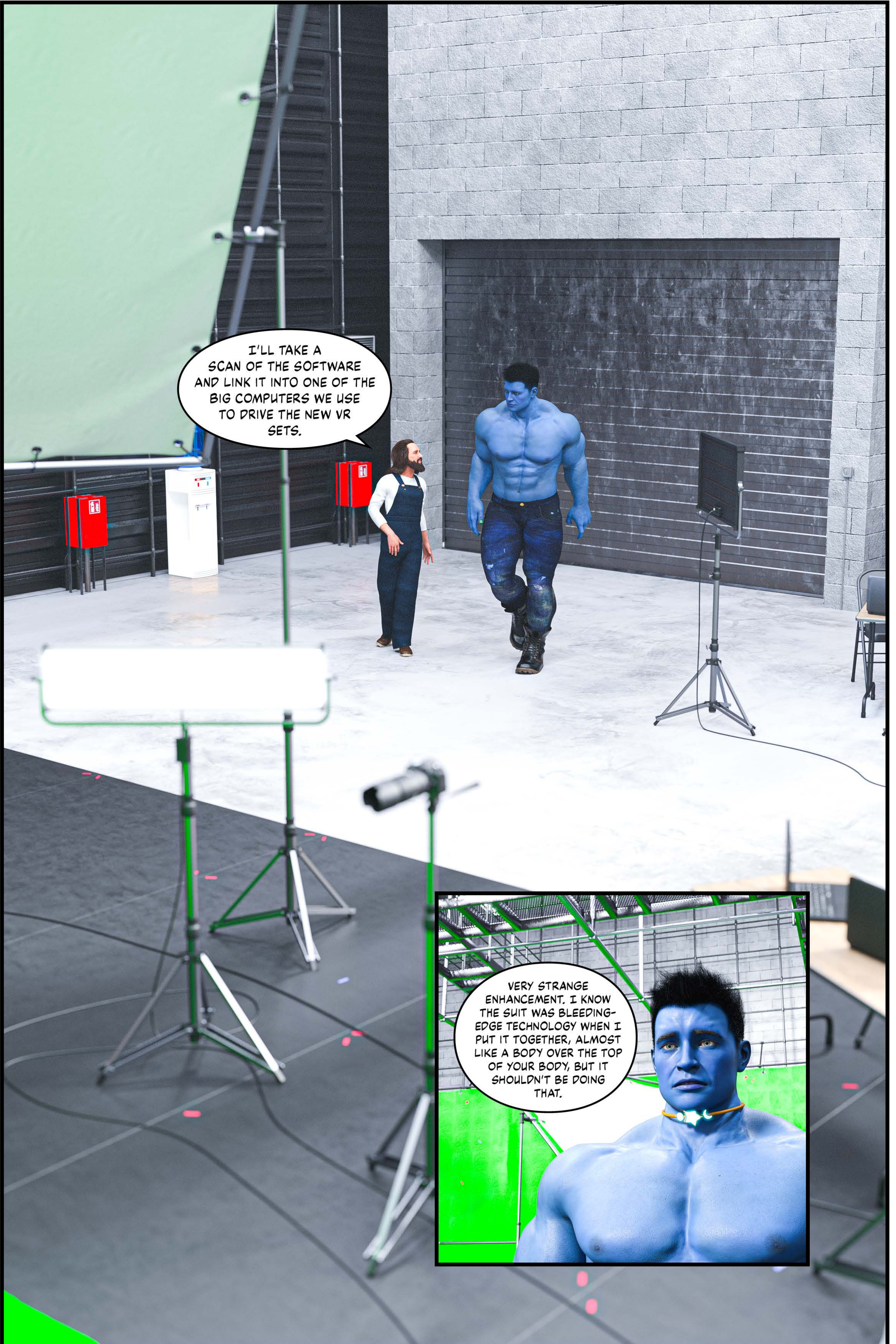
FOOL'S JEWEL 3



FOOL'S JEWEL 3



FOOL'S JEWEL 3



I'LL TAKE A SCAN OF THE SOFTWARE AND LINK IT INTO ONE OF THE BIG COMPUTERS WE USE TO DRIVE THE NEW VR SETS.

VERY STRANGE ENHANCEMENT. I KNOW THE SUIT WAS BLEEDING-EDGE TECHNOLOGY WHEN I PUT IT TOGETHER, ALMOST LIKE A BODY OVER THE TOP OF YOUR BODY, BUT IT SHOULDN'T BE DOING THAT.

FOOL'S JEWEL 3



FOOL'S JEWEL 3

THIS IS THE FUTURE OF SPECIAL EFFECTS. A FEW DECADES AGO, THEY DISPLAYED THE BACKGROUNDS ON GIGANTIC SCREENS SURROUNDING THE ACTORS.

NOW, THE WHOLE SET **IS** THE SCREEN. WITH V.R. TECH INTEGRATED, IT'S ALMOST LIKE LOADING THE ACTORS DIRECTLY INTO A COMPUTER.



IT'S AMAZING!



WHY DON'T YOU WAIT AROUND IN HERE, AND I'LL SEE WHAT I CAN DO ABOUT THAT **ROGUE** ENHANCEMENT OF YOURS.



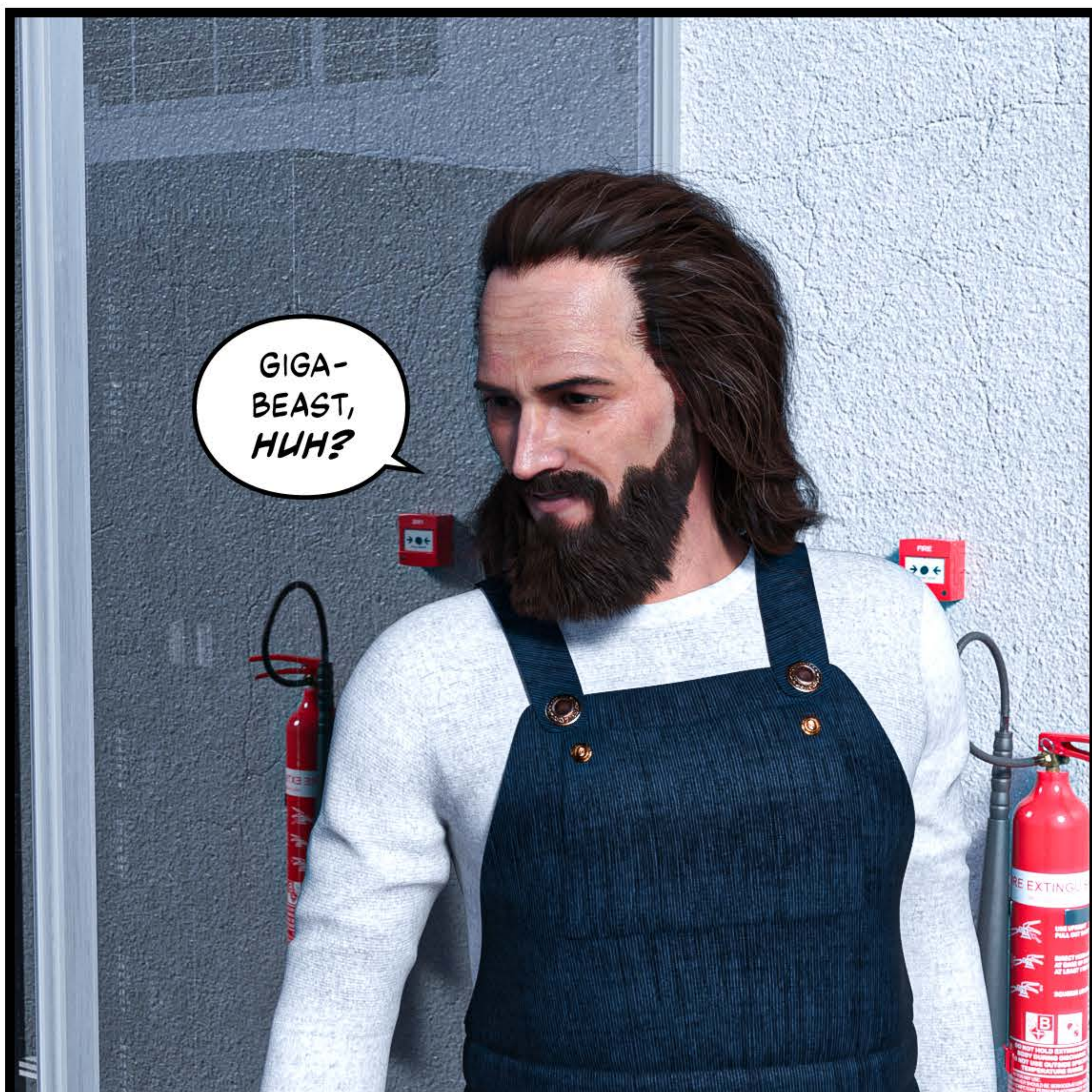
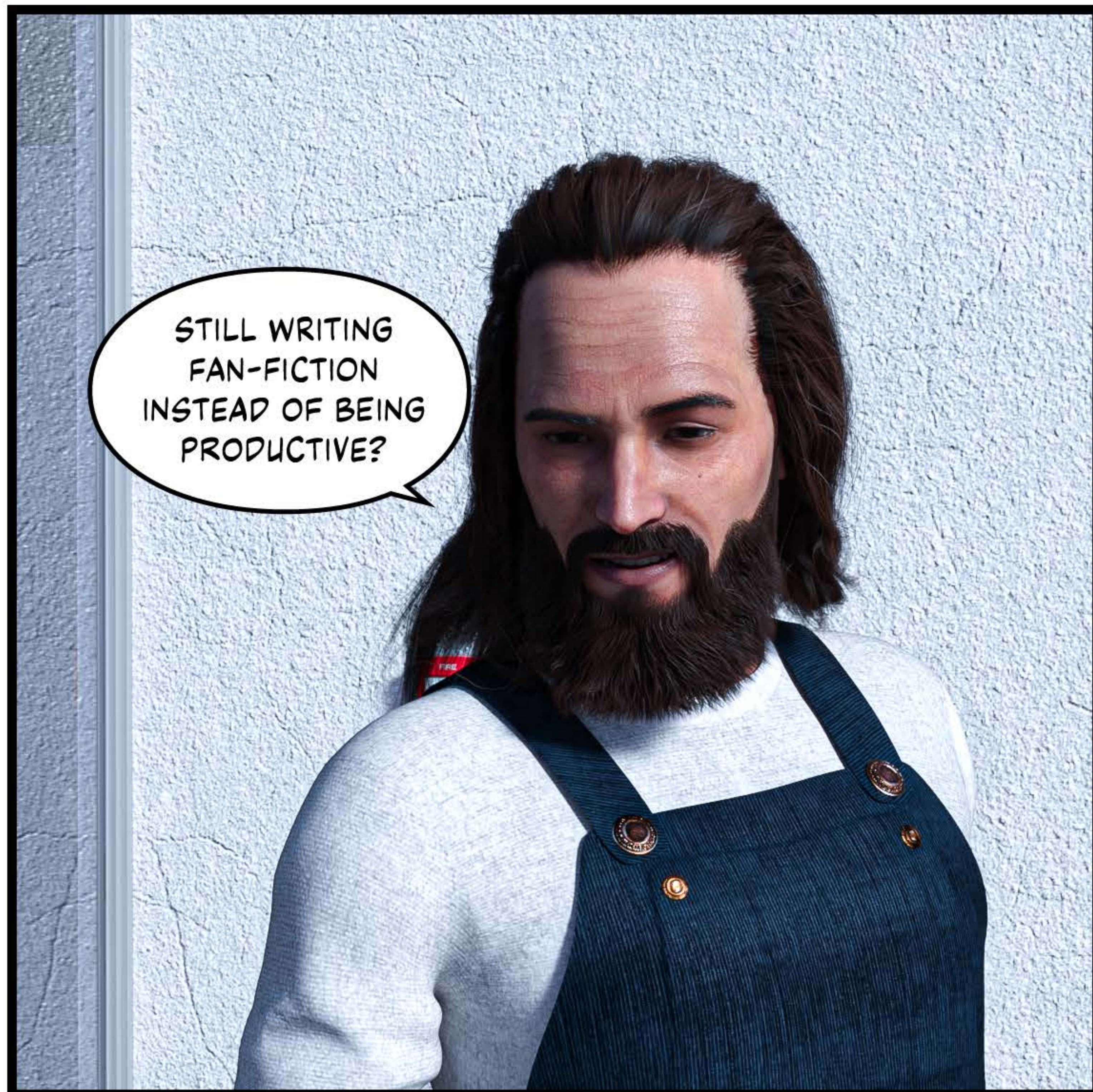
YOU COULD COME TO THE SERVER ROOM, BUT I DON'T THINK YOUR SUIT WILL FIT.



IT'S OKAY. A BIG EMPTY ROOM IS **EXACTLY** WHERE I'D LIKE TO BE RIGHT NOW. WHAT COULD POSSIBLY GO WRONG?



FOOL'S JEWEL 3



FOOL'S JEWEL 3



FOOL'S JEWEL 3

THERE SEEMS TO BE AN INITIALIZATION MODE WHICH ALTERS THE WEARER'S APPEARANCE TO PREDEFINED PARAMETERS...



HUH?



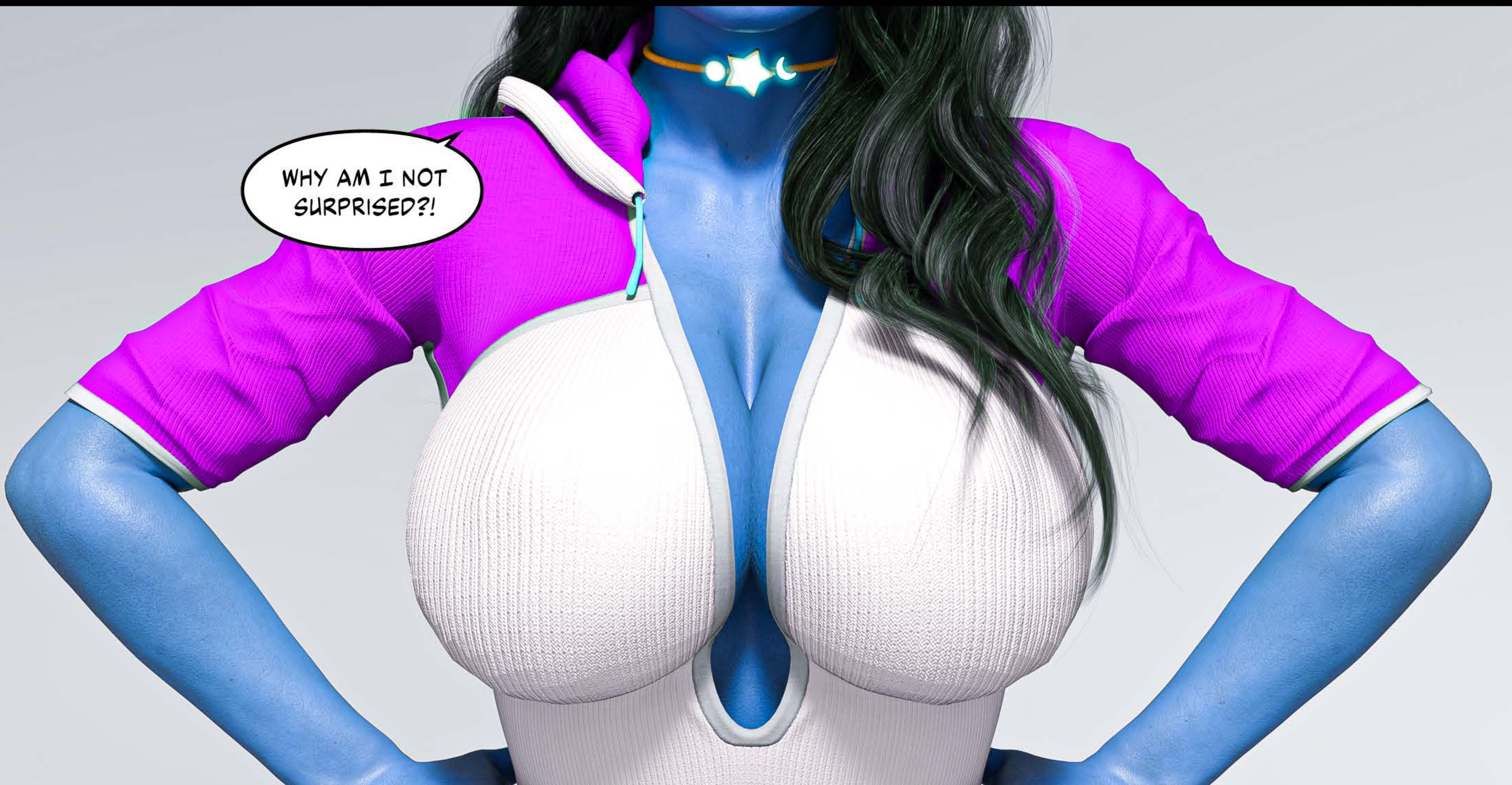
WHAT NOW?!



OH, HOLY HELL!



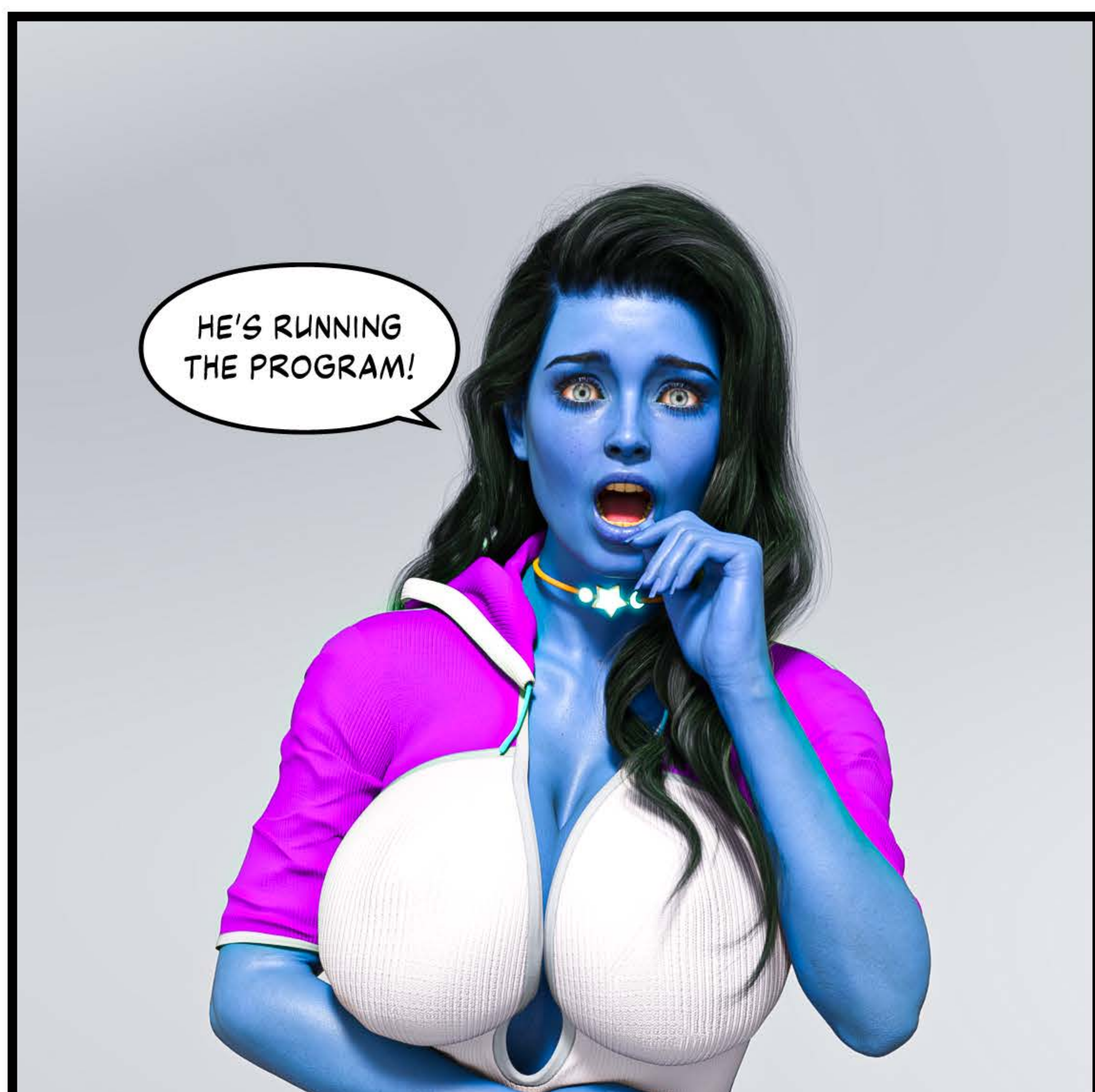
WHY AM I NOT SURPRISED?!



FOOL'S JEWEL 3



FOOL'S JEWEL 3



FOOL'S JEWEL 3



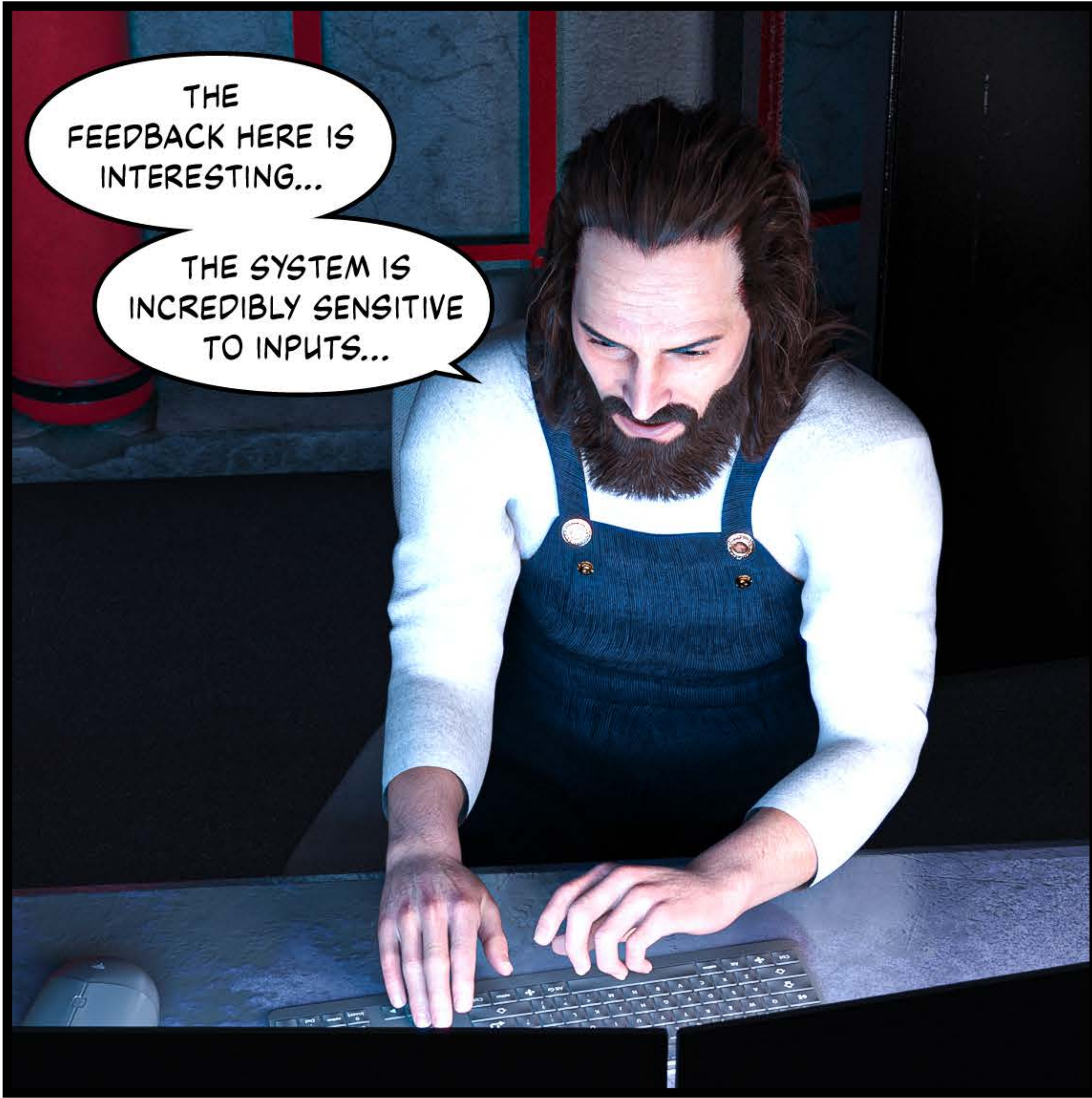
FOOL'S JEWEL 3



FOOL'S JEWEL 3



FOOL'S JEWEL 3



FOOL'S JEWEL 3



FOOL'S JEWEL 3



FOOL'S JEWEL 3



FOOL'S JEWEL 3



TOM REYNOLDS

FOOL'S JEWEL 3



WHOA...

FOOL'S JEWEL 3



FOOL'S JEWEL 3



FOOL'S JEWEL 3



IT'S OVER NOW.
I JUST WANT TO HOLD YOU CLOSE.



UHM... YOU SURE THAT'S ALL YOU WANT?



MY DEAR, WE AVERTED THE END OF THE WORLD, AND YOU WANT TO GET CLOSE TOGETHER LIKE WE USED TO?



UHM...



IF I REMEMBER MY COMICS LORE, YOU'RE COMPLETELY MADE OF METAL IN THIS FORM.

YOUR COCK MUST BE...

FOOL'S JEWEL 3



FOOL'S JEWEL 3

Giga-Beast may have once been a man, but laying under the Steel Soviet, she began to realize that those days were behind her...



She was once a raging and uncontrollable force of nature...



But, now it was her desire and lust for her old friend that raged. A flame that she could not extinguish alone.



Anton gave her his all, knowing she was still the strongest force on the planet.



He could put everything into loving her, knowing she would only ever want more...



Need more.



FOOL'S JEWEL 3

The orgasm bloomed from within, and for a great long time she passed out of awareness of the carnage that surrounded them.



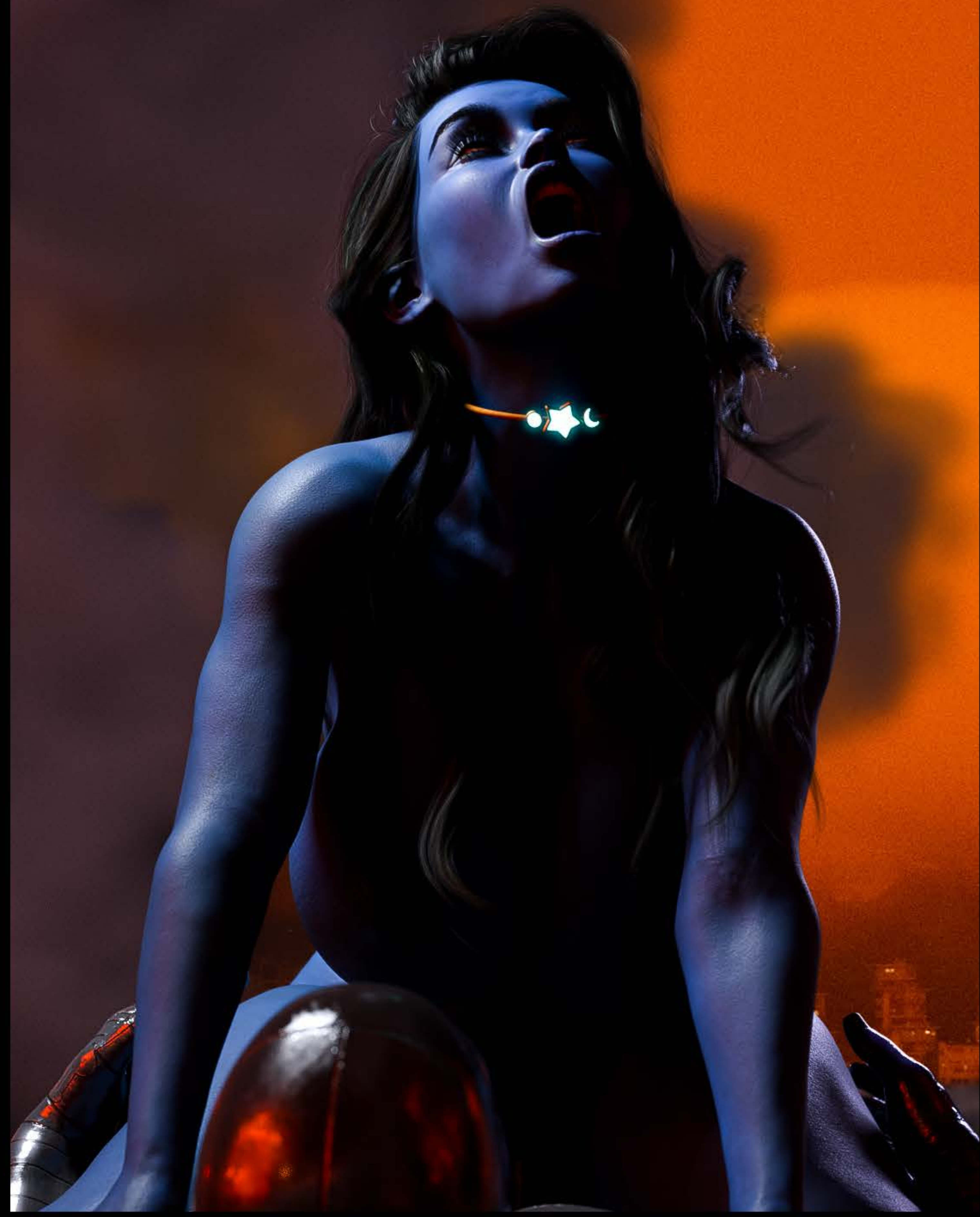
She was a woman, he was a man.



That was all that mattered.



She would not shed a tear for the destruction of the Professor's machine...



TOM REYNOLDS

FOOL'S JEWEL 3

She was a woman
now, forever.



FOOL'S JEWEL 3



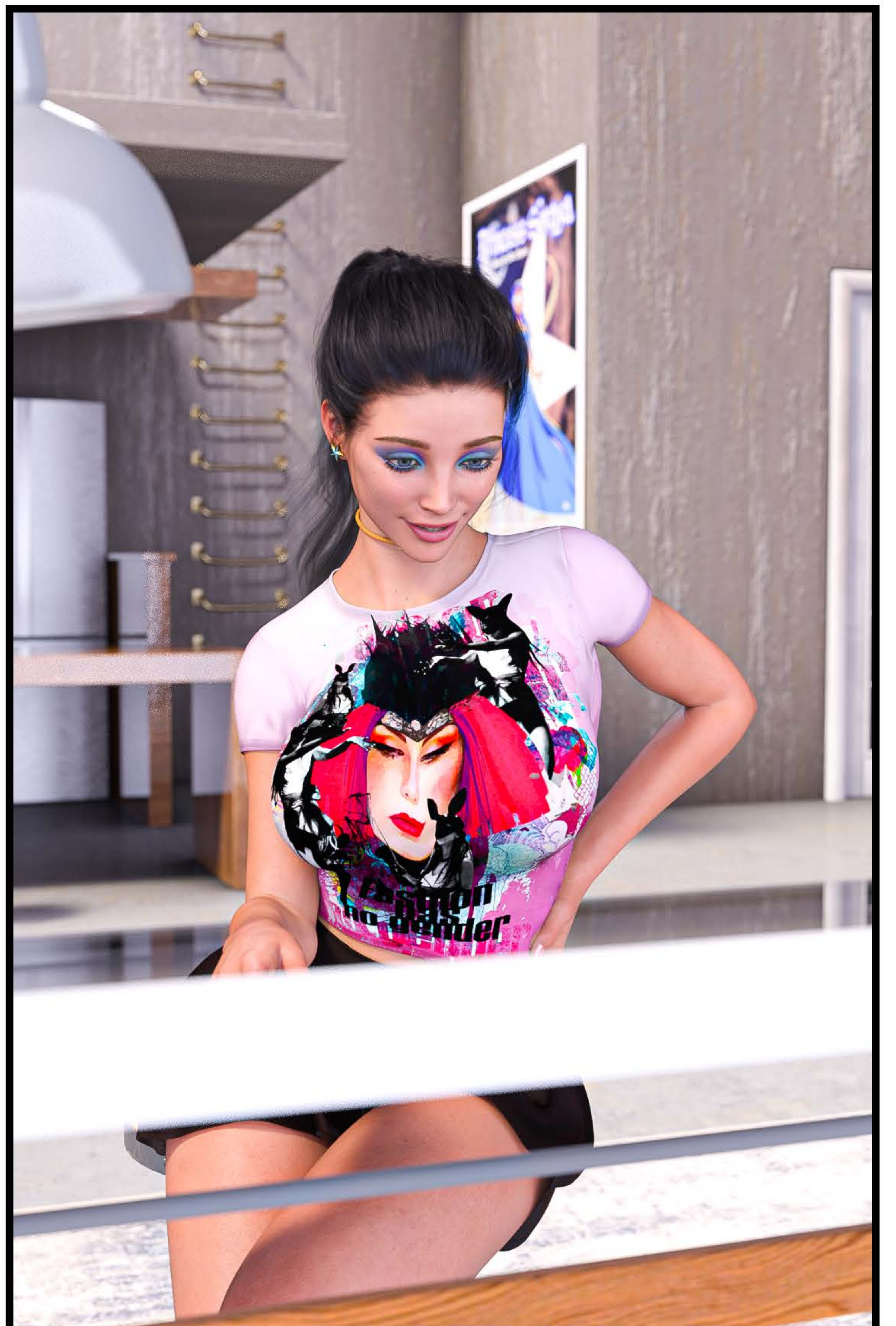
FOOL'S JEWEL 3



FOOL'S JEWEL 3



FOOL'S JEWEL 3



FOOL'S JEWEL 3

