

THIS MONTH'S MERIT BADGE:
HARDWARE



Waspie Corset Belt

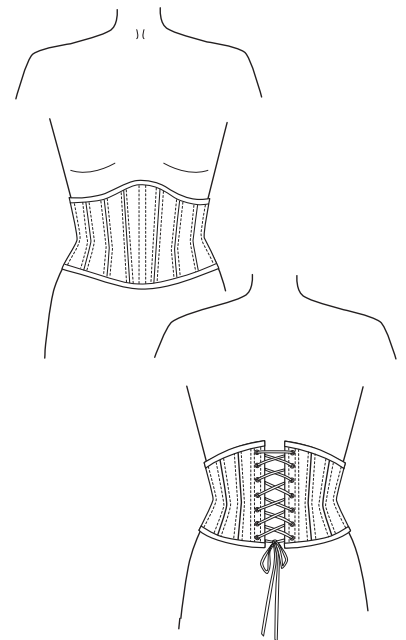
A PATREON EXCLUSIVE PATTERN



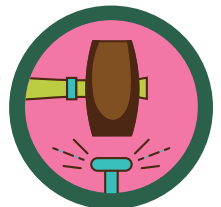
This fabulous little corset belt is the perfect accessory for that cinched silhouette. Based on the waspie corsets of Dior's New Look, this narrow corset is meant to be seen! It pairs beautifully with flared dresses and skirts (and is the perfect thing for lots of cosplay and costume projects--think Mary Poppins, Princess Aurora, and more!). This belt is made with real corsetmaking techniques, so it's a great entrée into that world. Don't forget to watch this month's video to learn all about the supplies and techniques in this project!



xoxo, *Gertie*



This month: If you're in a merit badge tier, your hardware badge is coming soon! Congrats on building up your skills. In this month's video, you'll learn:



- Double-layer corset construction
- Working with steel boning
- Setting grommets

SIZE CHART

The Waspie Corset Belt is sized in women's US 2–20 and 18–34. Please use the chart below to pick your size. Not sure which size range to choose? Read more about our new 18–34 size range [here on our blog!](#)

SIZES										
2-20	2	4	6	8	10	12	14	16	18	20
Waist	24 in 61 cm	26 in 66 cm	28 in 71.1 cm	30 in 76.2 cm	32 in 81.3 cm	34 in 86.4 cm	36 in 91.4 cm	38 in 96.5 cm	40 in 101.6 cm	42 in 106.7 cm

SIZES										
18-34	18	20	22	24	26	28	30	32	34	
Waist	40 in 101.6 cm	42 in 106.7 cm	44 in 111.8 cm	46 in 116.8 cm	48 in 121.9 cm	50 in 127 cm	52 in 132.1 cm	54 in 137.2 cm	56 in 142.2 cm	

FIT NOTES

Use your waist measurement to pick your size. The corset belt only needs to fit in the waist, so your waist measurement is the only measurement you need to pick a size. Take your waist measurement at the smallest part of your torso; this is where your body creases when you bend to the side (for many people this is about 1 inches [in] [2.5 cm] above the belly button). We've created this pattern to have 2 in of negative ease in the waist, but you may prefer more or less. For instance, if your waist measures 28 in, you will choose the size 6. The finished corset belt for size 6 measures 26 in, which will give you a 1-in waist reduction with a 1-in lacing gap at the back of the corset. (However, you can also wear the corset completely closed or with a bigger gap in the back.)

FINISHED MEASUREMENTS

Sizes										
2-20	2	4	6	8	10	12	14	16	18	20
Waist	22 in 55.9 cm	24 in 61 cm	26 in 66 cm	28 in 71.1 cm	30 in 76.2 cm	32 in 81.3 cm	34 in 86.4 cm	36 in 91.4 cm	38 in 96.5 cm	40 in 101.6 cm
Vertical CF*	6.1 in 15.5 cm	6.2 in 15.7 cm	6.3 in 16 cm	6.3 in 16 cm	6.4 in 16.2 cm	6.44 in 16.4 cm	6.5 in 16.5 cm	6.57 in 16.7 cm	6.6 in 16.8 cm	6.7 in 17 cm
Vertical CB*	5.8 in 14.9 cm	5.9 in 15.1 cm	6 in 15.2 cm	6.1 in 15.5 cm	6.13 in 15.6 cm	6.2 in 15.7 cm	6.3 in 16 cm	6.3 in 16 cm	6.4 in 16.2 cm	6.44 in 16.4 cm

Sizes										
18-34	18	20	22	24	26	28	30	32	34	
Waist	38 in 96.5 cm	40 in 101.6 cm	42 in 106.7 cm	44 in 111.8 cm	46 in 116.8 cm	48 in 121.9 cm	50 in 127 cm	52 in 132.1 cm	54 in 137.2 cm	
Vertical CF*	6.5 in 16.7 cm	6.6 in 16.8 cm	6.7 in 17 cm	6.75 in 17.1 cm	6.8 in 17.3 cm	6.87 in 17.5 cm	6.9 in 17.6 cm	7 in 17.8 cm	7.1 in 18 cm	
Vertical CB*	6.3 in 16 cm	6.4 in 16.2 cm	6.44 in 16.4 cm	6.5 in 16.5 cm	6.57 in 16.7 cm	6.6 in 16.8 cm	6.7 in 17 cm	6.75 in 17.1 cm	6.8 in 17.3 cm	

*CF denotes Center Front and CB denotes Center Back. The vertical lengths help you get a sense of the overall scale of the corset.

MATERIALS & NOTIONS

- Outer fabric
- Lining fabric
- Fusible interfacing (weft, woven, or nonwoven)
- ¼-in-wide (6 mm) spiral steel boning
- Optional: 10 ¼-in-wide (6 mm) flat steel bones (length should match CF and CB measurements)
- Metal cutters and pliers
- Boning tips or Teflon tape
- 14 size 00 grommets and washers
- Grommet setting tool
- 5 yards ¼-in-wide corset lacing
- ¾-in-wide 100% cotton twill tape
- Thread to match your fabric

RESOURCES

Here are some of the fabrics and supplies I used for the samples and in the video tutorial. There are lots of places to purchase fabric, so this is solely a guide you can use as a reference:

[Silk dupioni for corset outer](#)

(in colors Black Cherry, Wallowberry, and Cirrus)

[Coutil for lining](#)

[Weft interfacing](#)

[Heavy twill tape](#)

[Flat steel boning](#)

[Spiral steel boning](#) (I buy 18-in bones in bulk and cut them down to size)

[Grommets](#)

[Grommet setting tool](#)

[Corset lacing](#)

FABRIC NOTES

This is a two-layer corset with a heavy coutil or canvas lining and a fashion fabric outer. We made our samples in silk dupioni, which we then stabilized with fusible interfacing for strength and durability.

We recommend medium- to heavy-weight wovens for outer fabric: sturdy cottons like broadcloth, sateen, denim, twill, and canvas; silks with body like faille, dupioni, and shantung; linen and linen blends. Lining: coutil and heavy cotton canvas, twill, or duck.

PATTERN PIECES

1. Panel 1 (Center Front)

Cut 1 fabric, 1 interfacing, 1 lining

2. Panel 2

Cut 2 fabric, 2 interfacing, 2 lining

3. Panel 3

Cut 2 fabric, 2 interfacing, 2 lining

4. Panel 4

Cut 2 fabric, 2 interfacing, 2 lining

5. Panel 5

Cut 2 fabric, 2 interfacing, 2 lining

6. Panel 6

Cut 2 fabric, 2 interfacing, 2 lining

7. Panel 7 (Center Back)

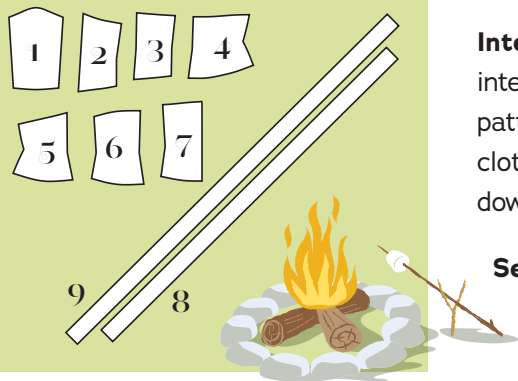
Cut 2 fabric, 2 interfacing, 2 lining

8. Upper Binding

Cut 1 fabric

9. Lower binding

Cut 1 fabric



REQUIRED YARDAGE & CUTTING LAYOUTS

NOTES: All pattern pieces are shown in a “without nap” layout. You may need additional yardage for directional prints, stripes, plaids, and other prints that need to be matched across seamlines.

SIZES 2-20

Fabric

(1, 2, 3, 4, 5, 6, 7, 8, 9)

Sizes 2-10		Sizes 12-20	
45 in	7/8 yd	1 1/8 yds	
60 in	0.8 m	1 m	

Lining

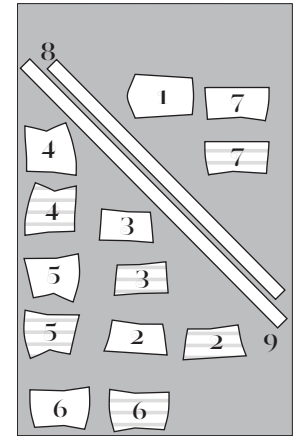
(1, 2, 3, 4, 5, 6, 7)

Sizes 2-20	
45 in	1/2 yds
60 in	0.5 m

Interfacing

(1, 2, 3, 4, 5, 6, 7)

Sizes 2-20	
60 in	1/2 yds
	0.5 m



FABRIC

all sizes
45 in and 60 in
Single layer of fabric

SIZES 18-34

Fabric

(1, 2, 3, 4, 5, 6, 7, 8, 9)

Sizes 18-24		Sizes 26-34	
45 in	1 1/8 yds	1 3/8 yds	
60 in	1 m	1.3 m	

Lining

(1, 2, 3, 4, 5, 6, 7)

Sizes 18-34	
45 in	1/2 yds
60 in	1.4 m

Interfacing

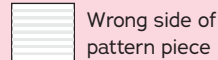
(1, 2, 3, 4, 5, 6, 7)

Sizes 18-34	
60 in	1/2 yds
	0.5 m

KEY TO LAYOUTS

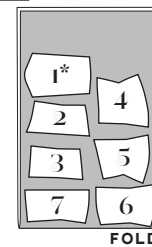


Right side of pattern piece



Wrong side of pattern piece

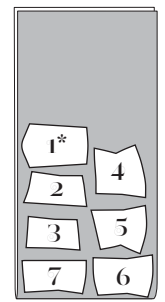
Be sure to note whether the pieces are cut on a double or single layer of fabric. For a double layer, there will be a note indicating FOLD on the layout.



LINING

all sizes
45 in and 60 in

* Cut one layer of fabric for piece 1



INTERFACING

all sizes
60 in

SEWING INSTRUCTIONS

BEFORE SEWING

Transferring marks: Use dressmaker’s tracing paper and a tracing wheel to transfer all pattern markings to the wrong side (WS) of your fabric. Mark pattern notches by snipping into the seam allowance with the tip of your scissors.

Interfacing: All outer fabric pieces need to be stabilized with fusible interfacing prior to sewing. Follow the interfacing cutting instructions on the pattern pieces. Apply fusible interfacing to the WS of the fabric, using a press cloth and steam. Do not rub your iron back and forth; lift it up and press it down for several seconds at a time until interfacing is fully adhered.

Seam Finishing: All raw edges are fully enclosed by the lining, so there is no need for seam finishing.

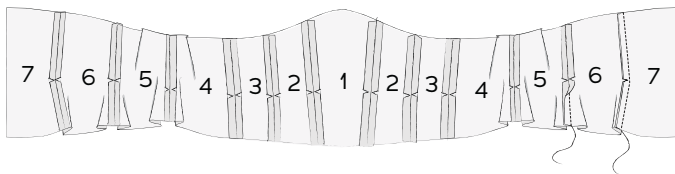
NOTES

- 5/8-inch (in) (1.5 cm) seam allowances are included on all pattern pieces, except where otherwise noted.
- Be extremely vigilant about using the correct seam allowance so that your two layers will match up exactly when sewn together.
- It's a good idea to use a fabric pen or pencil to label each piece with its number on the WS. Corset pieces all start to look alike once you take the paper pattern off, so it helps to have a reference.
- Be sure to transfer the waistline mark to the WS of the lining pieces. This will be your guide for placing the twill tape.

SEWING THE CORSET BELT

Lining

Sew the lining pieces together, building out from center front as follows:



- 1. Pin Panel 2 pieces to Panel 1 piece,** right sides (RS) together, matching notches. Stitch. Press seam allowances open.
- 2. Pin Panel 3 pieces to Panel 2 pieces,** RS together, matching notches. Stitch. Press seam allowances open.
- 3. Pin Panel 4 pieces to Panel 3 pieces,** RS together, matching notches. Stitch. Press seam allowances open.
- 4. Pin Panel 5 pieces to Panel 4 pieces,** RS together, matching notches. Stitch. Clip into waistline curve at notch. Press seam allowances open.
- 5. Pin Panel 6 pieces to Panel 5 pieces,** RS together, matching notches. Stitch. Press seam allowances open.
- 6. Pin Panel 7 (center back) pieces to Panel 6 pieces,** RS together, matching notches. Stitch. Press seam allowances open.
- 7. Cut 1 piece of 3/4-in-wide (2.5 cm) twill tape,** cutting to the length of the corset's marked waistline. Tip: it's recommended to steam and press your twill tape before cutting to size to ensure that it won't

stretch when you are wearing the corset. To do this, wet your tape completely and then press with high steam.

8. Insert waist stay: pin twill tape to the WS of the lining at the marked waistline. From the RS, stitch in the ditch of each seam to secure the twill tape in place.

Outer Fabric Panels

1. Sew Outer Corset panels: repeat steps 1–6 from lining section.

2. Sew lining to outer corset belt fabric: pin lining to outer fabric at short ends, RS together. Stitch. Press seam allowances open. Turn RS out. Press center back panels flat, making sure the seam is exactly on the edge of the corset, not rolled in.

Boning

1. Create boning channels: pin outer fabric to lining, WS together, making sure to line up the seams perfectly. Stitch in the ditch of each seam. Topstitch seam allowances 3/8 in (1 cm) from each seamline, except for the center back panels. Stitch along boning channel placement lines on center front and center back panels.

2. Prepare the boning: cut spiral steel boning lengths so that they are about 3/4 in (2.5 cm) shorter than the length of each boning channel. Apply caps to the boning ends with pliers or wrap the ends with Teflon tape and insert them into the boning channels. Baste across upper and lower edges of corset belt using 1/8-in seam allowance. TIP: On the side seams, bend the boning to create an inward crease at waistline. This will help accentuate the hourglass shape of the corset belt. NOTE: if using the optional flat steel boning, use the flat bones instead of spiral bones at center front, the seams between Panel 1 and Panel 2, and on either side of the grommets.

Finish Corset Belt

1. Bind upper and lower edge of corset belt: with RS together, pin Upper Binding (8) to upper edge of corset belt and pin Lower Binding (9) to lower edge of corset belt, having binding extend 5/8 in (1.5 cm) past

finished short edge of corset. Stitch using ¼-in (6 mm) seam allowance. (Note that because the binding may stretch on the bias, you may find your binding is longer than the corset edge. Simply trim the binding so that it is only 5/8 in longer than the corset itself on each end.) Flip binding up and press. Press in short ends of binding. Turn binding to WS of the corset belt. Fold binding's edge under ¼ in and pin to WS of the belt, using initial stitching as a guide. Stitch in the ditch of binding from RS through all thicknesses. Alternatively, slipstitch binding invisibly to belt's WS by hand.

2. Apply grommets to center back panels at circle marks, following manufacturer's instructions. (See this month's video for our step-by-step process!)

3. Insert lacing: working from upper edge down, thread corset lacing through grommets, extending ends evenly through the last grommets. Tie a knot at the end of each lace and trim close to the knot. Pull lace tight and tie ends in a bow.

Enjoy your fabulous new corset belt!



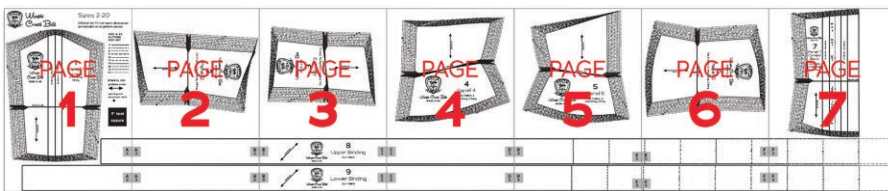
PATTERN PIECE LOCATION GUIDE

Here is a list to help you locate the pattern pieces on the letter-size tiled pages and A0 pattern sheets. The tiled pieces and A0 sheets are included as separate pdf files as part of this digital pattern.

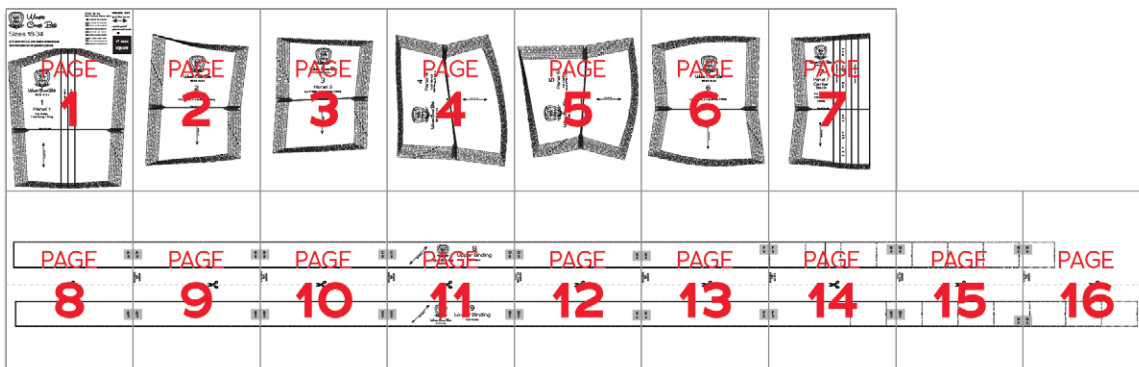
PC#	Piece Name	SIZES 2-20		SIZES 18-34	
		Tiled	A0	Tiled	A0
1	Panel 1 (Center Front)	1	1	1	1
2	Panel 2	2	1	2	1
3	Panel 3	3	1	3	1
4	Panel 4	4	1	4	1
5	Panel 5	5	1	5	1
6	Panel 6	6	1	6	1
7	Panel 7 (Center Back)	7	1	7	1
8	Upper Binding	1-7	1	8-16	1
9	Lower Binding	1-7	1	8-16	1

TILING MAPS

SIZES 2-20



SIZES 18-34



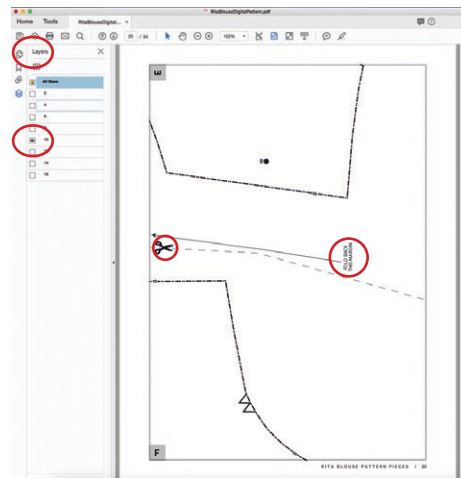
HOW TO USE THIS PATTERN

The pattern pieces are tiled so you can print them on Letter (8½" x 11") or A4 size paper. You can also send the A0 pattern sheet PDF to a local or online printer (like www.pdfplotting.com) to print on large sheets (36" x 48" for U.S. or A0 for international).

This pattern includes size layers. To get the best results, open either the Tiled or A0 pattern pieces PDF in Acrobat Reader.

Open the Layers Palette (View>Show/Hide>Navigation Panes>Layers) and hide all of the layer(s) except for the ones you want to print by clicking on the eye icon.

The All Sizes layer has general pattern information and will always print.



WORKING WITH THE TILED PIECES

Go to File>Print and change the page range to the pages you need for the pieces you've chosen (see Pattern Pieces Printing Index). Make sure the Page Sizing settings to 100% or Actual Size. Test this after printing by measuring the 1" test box on the first page of the bodice pattern pieces.

Cut apart any pattern pieces that share a page by cutting on the gray long dashed lines. Then fold back the page margins on each page as directed.

Tape the pages together, butting up the folded page edges with the gray margin lines, matching up the letters in gray boxes.

MORE FROM GERTIE

[On Instagram:](#) Stay in the loop and get inspired.

[On YouTube:](#) Learn beginner and advanced sewing skills and techniques through my tutorials, watch episodes of my Gertie's World series, and join regular live streams.

[On Patreon:](#) Access monthly patterns and tutorial videos.

[At CharmPatterns.com:](#) Shop my sewing patterns and accessories.

