

A woman with purple hair, wearing a red dress and blue denim jeans with significant rips, is shown from the waist down. She is looking towards the left with a distressed expression. The background is a brick wall and a sidewalk.

CAN'T
YOU STOP
THIS, ALIETA?
I KNOW WE'VE HAD OUR
DIFFERENCES,
BUT COME
ON!

SHE BEGS HER
NEMESIS TO STOP,
AS HER PANTS GROW
TIGHT AROUND HER
SWELLING BODY.



Jut!



Thrust!



Project!



Protrude!



I'M
GETTING TOO
BIG! I SPENT A LOT
OF MONEY ON THESE
"TORN" PANTS. I
GOTTA GET 'EM
OFF!

AND A NEW CONCERN
BEGINS TO SNEAK ITS
WAY INTO HER
PANICED MIND.



Fatter!



Plumper!



Bubblier!



Juicier!

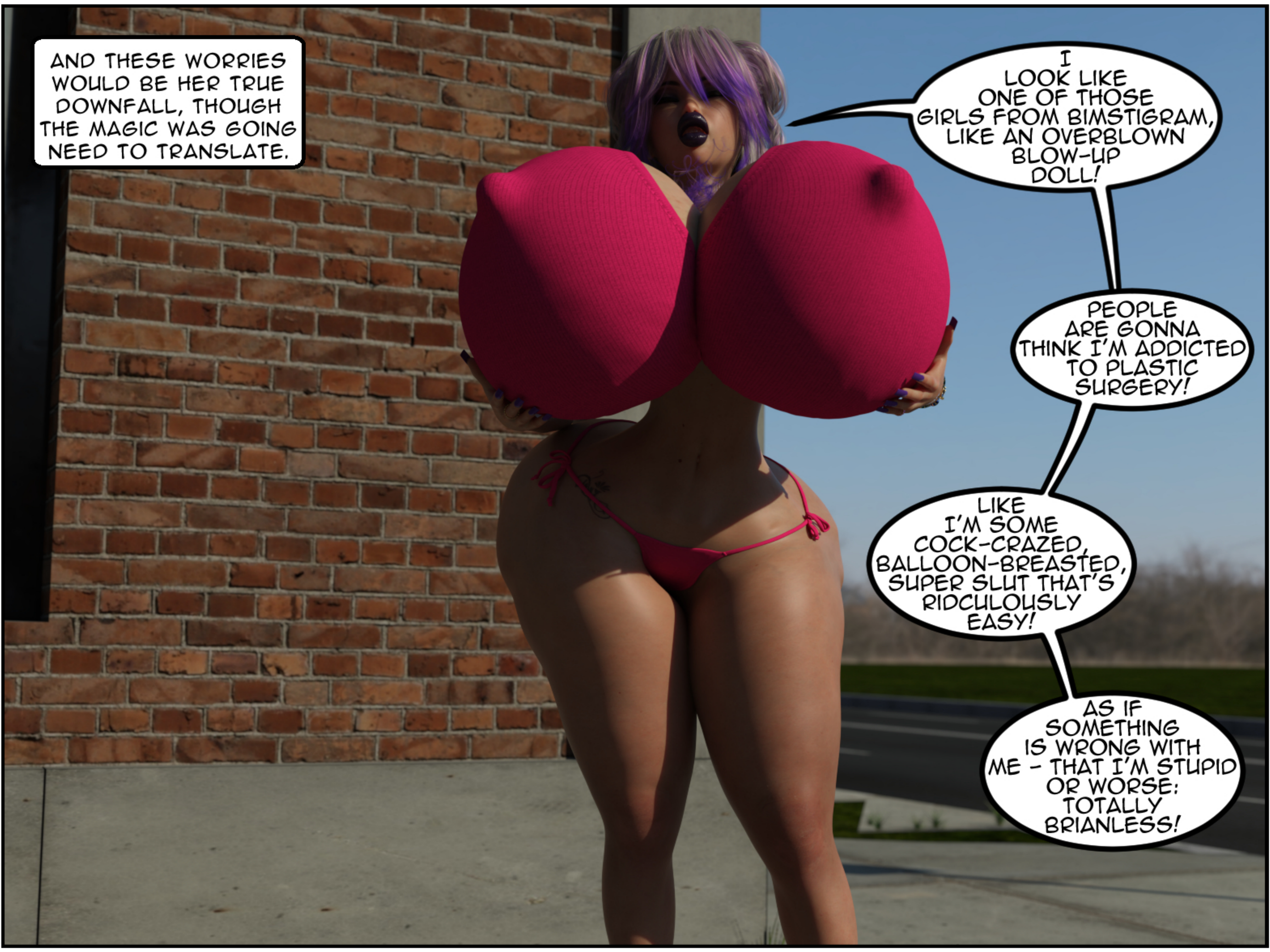
AND THESE WORRIES WOULD BE HER TRUE DOWNFALL, THOUGH THE MAGIC WAS GOING NEED TO TRANSLATE.

I LOOK LIKE ONE OF THOSE GIRLS FROM BIMSTIGRAM, LIKE AN OVERBLOWN BLOW-UP DOLL!

PEOPLE ARE GONNA THINK I'M ADDICTED TO PLASTIC SURGERY!

LIKE I'M SOME COCK-CRAZED, BALLOON-BREADED, SUPER SLUT THAT'S RIDICULOUSLY EASY!

AS IF SOMETHING IS WRONG WITH ME - THAT I'M STUPID OR WORSE: TOTALLY BRIANLESS!



AND
THAT'S NOT
SOMETHING I EVER
WANTED. I DEFINITELY NEVER,
EVER DREAMED OF MY...
GIANT TITTIES... FEELING
SO FUCKING...
GOOD!





Mmmmmmmmmmm!

YOU SHOULD BE MORE CAREFUL WITH THE THINGS THAT YOU SAY. I'M NOT REALLY IN CONTROL OF THIS ANY LONGER.



WHO KNOWS WHAT COULD HAPPEN TO YOU, DAISY!





LIKE,
WHAT DO YOU
MEAN?

DAISY HAS AIRED HER
DEEPEST FEAR, BUT
NOT NECESSARILY IN
A WAY THAT IT CAN BE
TURNED AROUND.

YOU'RE
TALKING LIKE
I'M SUPER
STUPID.

DLING!

Style!



LIKE
I'M JUST
SOME DITZY
BIMBO.

DARKER!

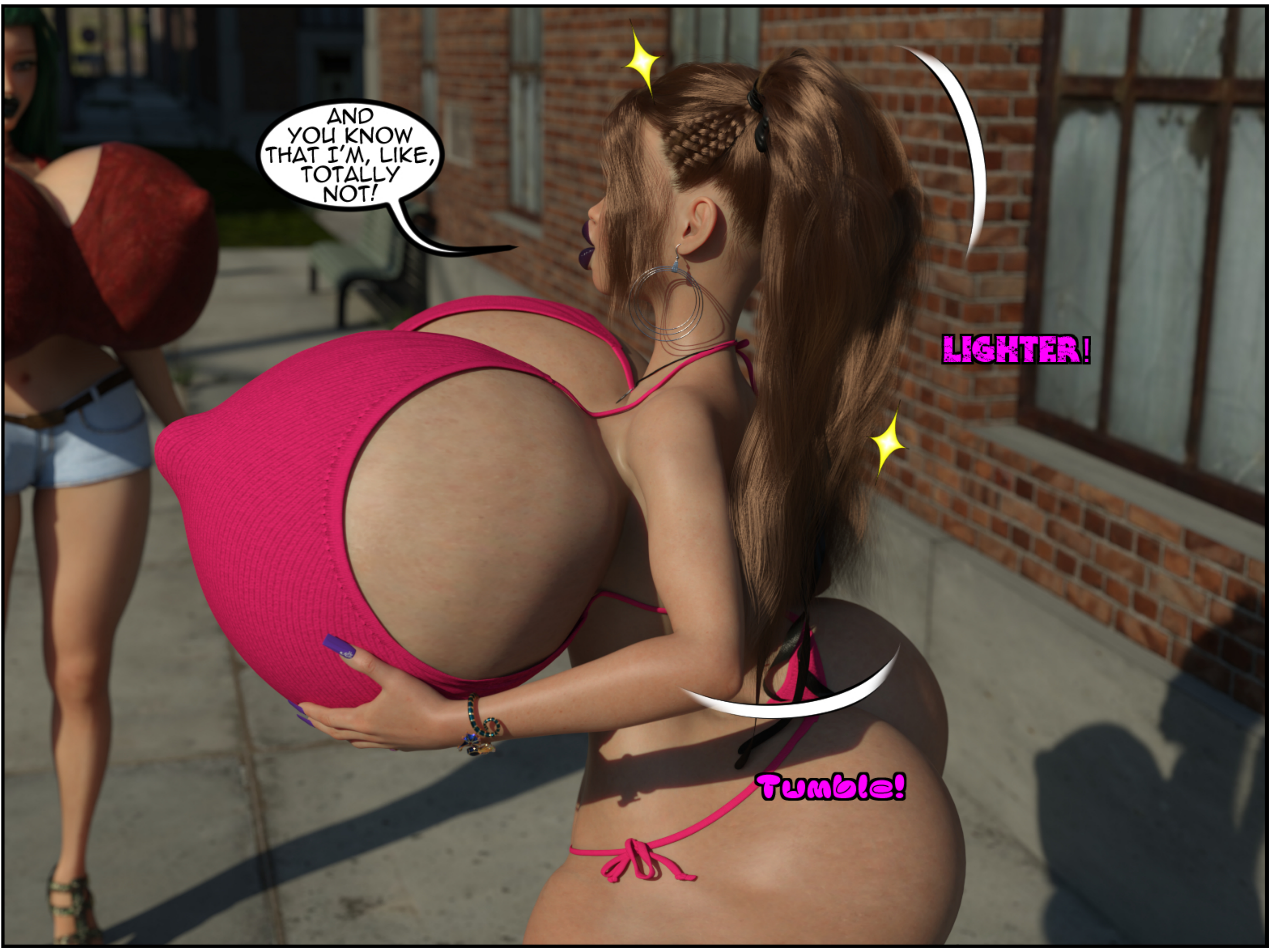
Grow!



AND YOU KNOW THAT I'M, LIKE, TOTALLY NOT!

LIGHTER!

Tumble!




EXCEPT
ON DAYS
THAT END IN,
"Y" RIGHT?
HEHE!

BLING!

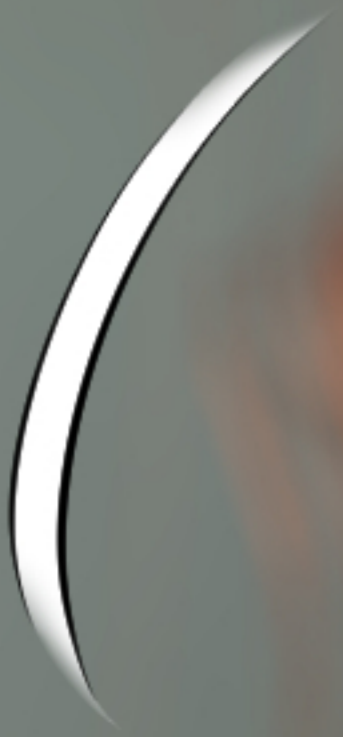
Longer!





BUT THE MAGIC THAT
LUSTIA AND ALIETA
HAVE UNLEASHED
MANAGES TO FIND A
SEXY WAY TO DO SO.

I
REALLY LOVE
BEING SUCH A HAWT
SLUT, ALIETA. DOES
THAT MAKE ME
BAD?



Grow!





Extend!





Longer!



A close-up photograph of a person's face, focusing on the lips and nose. A purple lip brush is visible at the bottom left, applying lipstick. A black brush with white crescent-shaped highlights is positioned near the lips. The text "Fuller!" is written in pink with a black outline. The text "Thicker!" is written in pink with a black outline. The background is a blurred, light-colored wall.

Fuller!

Thicker!

A close-up photograph of a woman's face, focusing on her nose and lips. She has bright purple, glossy lipstick on her lips, which are slightly parted. Her skin is fair and has a soft texture. The background is a plain, light-colored wall.

IT ALLOWS DAISY
TO SAY THINGS, AND
THEN PATENTLY WAITS
FOR HER TO
CONTRADICT THEM.

IS
BEING SUCH
A NAUGHTY NYMPHO
WRONG? SHOULD I *NOT*
BE SO HUNGRY FOR CLIM ALL
OF THE TIME, DREAMING
OF SUCKING FAT
COCK EVERY
NIGHT?

A close-up photograph of a person's lips. The lips are coated in a dark purple, glossy lipstick. Two white, crescent-shaped highlights are placed on the outer edges of the lips, one on the upper lip and one on the lower lip, to emphasize their fullness. The word "Fuller!" is written in a pink, bubbly font with a black outline, positioned to the left of the lips. The background is a soft, out-of-focus grey.

Fuller!

A close-up photograph of a person's lips. The lips are coated in a vibrant, glossy purple lipstick. Two white, crescent-shaped highlights are positioned on the left side of the lips, one above the upper lip and one below the lower lip, creating a 3D effect. The skin is a light, warm tone. The background is a soft, out-of-focus grey.

Fatter!

A close-up photograph of a person's lips. The lips are coated with a dark purple, glossy lipstick. Two white, crescent-shaped highlights are placed on the outer edges of the lips to create a 3D effect. The word "Plumper!" is written in a pink, bubbly font with a black outline, positioned to the left of the lips. The background is a soft, out-of-focus grey.

Plumper!

A close-up photograph of a person's lips. The lips are coated in a vibrant, glossy purple lipstick. Two white, crescent-shaped highlights are positioned on the left side of the lips, one above the upper lip and one below the lower lip, creating a 3D effect. The background is a soft, out-of-focus grey. The text 'Plusher!' is written in a pink, bubbly font with a black outline, centered on the left side of the image.

Plusher!