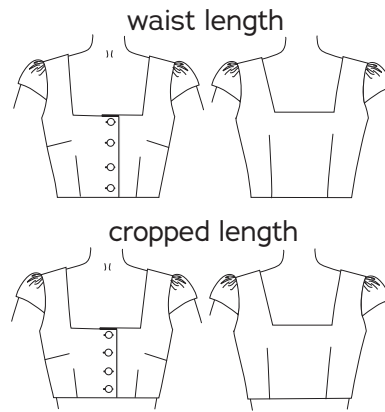




Picnic Top

A PATREON EXCLUSIVE PATTERN



Make a 1940s-inspired blouse to pair with skirts and shorts! This button-front top can be made in two lengths: waist or cropped. It's fully lined and has the cutest puff sleeves. Perfect for summer backyard picnics!

soso, Gertie

SIZE CHART

The Picnic Top is sized in women's US 2–20, with separate pieces for A–H cup sizes. Please use the chart below to pick your size. The High Bust measurement should be taken above your breasts and the Full Bust measurement should be taken at the fullest part of your bustline to determine your cup size. Take the waist measurement at the smallest part of your waist and the hip measurement at the widest part of your hips. Note that it is best to choose your size by your bust measurements (and add or remove from the side seams at the waist if needed).

	2	4	6	8	10	12	14	16	18	20
High Bust	29 in 73.7 cm	31 in 78.7 cm	33 in 83.8 cm	35 in 88.9 cm	37 in 94 cm	39 in 99 cm	41 in 104.1 cm	43 in 109.2 cm	45 in 114.3 cm	47 in 119.4 cm
Bust A cup	30.5 in 77.5 cm	32.5 in 82.5 cm	34.5 in 87.6 cm	36.5 in 92.7 cm	38.5 in 97.8 cm	40.5 in 102.9 cm	42.5 in 107.9 cm	44.5 in 113 cm	46.5 in 118.1 cm	48.5 in 123.1 cm
Bust B/C cup	31 in 78.7 cm	33 in 83.8 cm	35 in 88.9 cm	37 in 94 cm	39 in 99 cm	41 in 104.1 cm	43 in 109.2 cm	45 in 114.3 cm	47 in 119.4 cm	49 in 124.5 cm
Bust D/DD cup	32 in 81.3 cm	34 in 86.4 cm	36 in 91.4 cm	38 in 96.5 cm	40 in 101.6 cm	42 in 106.7 cm	44 in 111.8 cm	46 in 116.8 cm	48 in 121.9 cm	50 in 127 cm
Bust F/G cup	33 in 83.8 cm	35 in 88.9 cm	37 in 94 cm	39 in 99 cm	41 in 104.1 cm	43 in 109.2 cm	45 in 114.3 cm	47 in 119.4 cm	49 in 124.4 cm	51 in 129.5 cm
Bust H cup	34 in 86.4 cm	36 in 91.4 cm	38 in 96.5 cm	40 in 101.6 cm	42 in 106.7 cm	44 in 111.8 cm	46 in 116.8 cm	48 in 121.9 cm	50 in 127 cm	52 in 132 cm
Waist	24 in 61 cm	26 in 66 cm	28 in 71.1 cm	30 in 76.2 cm	32 in 81.3 cm	34 in 86.4 cm	36 in 91.4 cm	38 in 96.5 cm	40 in 101.6 cm	42 in 106.7 cm

MATERIALS & NOTIONS

- Fabric for top and lining
- Four 1-in buttons (Larger cup sizes may require five buttons)
- Thread to match your fabrics
- Fusible interfacing (look for lightweight woven or tricot types)

RESOURCES

- [Simflex Sewing Gauge](#)
- [Flower Buttons](#)
- [6.5 oz Robert Kaufman Denim in Indigo Washed](#)
- [Bandana Print Lining Fabric](#)
- [Tricot Fusible Interfacing](#)
- [Kai N5210 Scissors](#)

FABRIC NOTES

We recommend light- to medium-weight fabrics like cotton lawn, poplin, sateen, seersucker, lightweight denim, lightweight twill and canvas, or linen and linen blends. Lining: lightweight cotton and cotton blends.

FINISHED MEASUREMENTS

FIT NOTES: The Picnic Top is designed to be close fitting in the bust and have a little bit of extra ease at the waist to wear over a skirt or shorts waistband. It has 1½ in of ease in the bust and 1½ in of ease in the waist.

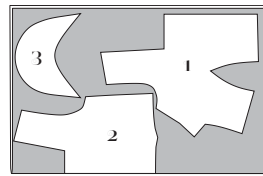
Size	2	4	6	8	10	12	14	16	18	20
Bust A	32 in 81 cm	34 in 86 cm	36 in 91.1 cm	38 in 96.2 cm	40 in 101.3 cm	42 in 106.4 cm	44 in 111.4 cm	46 in 116.5 cm	48 in 121.6 cm	50 in 126.7 cm
Bust B/C	32.5 in 82.2 cm	34.5 in 87.3 cm	36.5 in 92.4 cm	38.5 in 97.5 cm	40.5 in 102.6 cm	42.5 in 107.6 cm	44.5 in 113 cm	46.5 in 118.1 cm	48.5 in 123.2 cm	50.5 in 128.2 cm
Bust D/ DD	33.5 in 85.1 cm	35.5 in 90.2 cm	37.5 in 95.2 cm	39.5 in 100.3 cm	41.5 in 105.4 cm	43.5 in 110.4 cm	45.5 in 115.6 cm	47.5 in 120.6 cm	49.5 in 125.7 cm	51.5 in 130.8 cm
Bust F/G	34.5 in 87.3 cm	36.5 in 92.4 cm	38.5 in 97.5 cm	40.5 in 102.6 cm	42.5 in 107.6 cm	44.5 in 113 cm	46.5 in 118.1 cm	48.5 in 123.2 cm	50.5 in 128.2 cm	52.5 in 133.5 cm
Bust H	35.5 in 90.2 cm	37.5 in 95.2 cm	39.5 in 100.3 cm	41.5 in 105.4 cm	43.5 in 110.4 cm	45.5 in 115.6 cm	47.5 in 120.6 cm	49.5 in 125.7 cm	51.5 in 130.8 cm	53.5 in 135.9 cm
Waist	25.5 in 64.8 cm	27.5 in 69.9 cm	29.5 in 74.9 cm	31.5 in 80 cm	33.5 in 85.1 cm	35.5 in 90.2 cm	37.5 in 95.3 cm	39.5 in 100.3 cm	41.5 in 105.4 cm	43.5 in 110.5 cm

- **The Picnic Top has two length options:** waist (ends at the natural waist, just above your belly button) or cropped (ends 1-1/4 inches [in] above your natural waist). The cropped-length cutting line can also be used as a length adjustment line if you are short or long-waisted. Top length is a very personal preference so make sure to test the pattern to be sure you're happy with it.
- **Be sure to make a muslin of this style!** Darted styles require close attention to fitting. The darts should point directly toward your apex (the fullest part of the breast) and should end ½ in to 1 in from the apex. It is very common to need to adjust the length or height of darts to fit your unique bust shape.

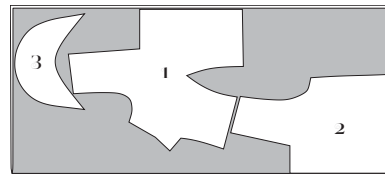
REQUIRED YARDAGE & CUTTING LAYOUTS

Top Fabric and Lining (1, 2, 3)

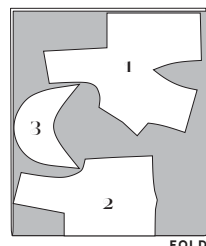
	Sizes 2-12	Sizes 12-20
45 in	1 yd 0.9 m	1½ yd 1.4 m
60 in	¾ yd 0.7 m	1 yd 0.9 m



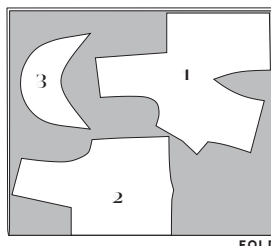
45 in, sizes 2-10



45 in, sizes 12-20



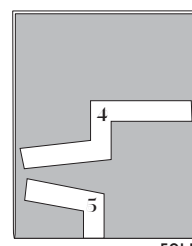
60 in, sizes 2-10



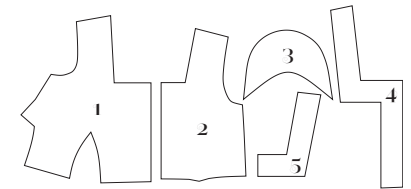
60 in, sizes 12-20

Interfacing (4, 5)

All sizes	
60 in	¾ yd 0.7 m



60 in, all sizes



- 1. Top Front**
Cut 2 fabric, 2 lining
- 2. Top Back**
Cut 1 fabric on fold, 1 lining on fold
- 3. Sleeve**
Cut 2 fabric, 2 lining
- 4. Front interfacing**
Cut 2 interfacing
- 5. Back interfacing**
Cut 1 interfacing on fold

SEWING INSTRUCTIONS

Don't forget to watch the Picnic Top video on Patreon for visual references and in-depth explanations!

BEFORE SEWING

Transferring marks: Use dressmaker's tracing paper and a tracing wheel to transfer all pattern markings to the wrong side (WS) of your fabric. Mark pattern notches and dart legs by snipping into the seam allowance with the tip of your scissors.

Seam Finishing: all raw edges are fully enclosed by the lining, so there is no need for seam finishing.

NOTE: 5/8-inch (in) (1.5 cm) seam allowances are included on all pattern pieces, except where otherwise noted.

TOP

1. Staystitch neckline on top back and top front: using a 1/2-in (1.3-cm) seam allowance, stitch from each shoulder to the center back, pivoting at each corner and overlapping your opposite stitching lines at center back. Stitch each front neckline from the shoulder, pivot at the corner, and stitch to center front.

2. Sew bust darts and back waist darts: on Top Front (1) and Top Back (2), match the dart legs, right side (RS) together, then stitch from the raw edge to the dart point. Backstitch at the beginning but not at the point, leaving a few inches of thread at the points. Tie off the threads and trim. Press the bust darts down and the back waist darts toward center back.

3. To sew the front waist darts, note that they are slightly curved and have a cut-out section. Match the dart's cut edges and stitch from the raw edge, starting from the base and following the marked stitching lines at the dart point. (Note that on A-C cups only, you will need to use a 1/4" seam allowance. D-H cups will use a 5/8" seam allowance as shown in the video.) Cut the dart legs open to just below the point. Press dart legs open and tip of dart flat.

4. Interface the lining neckline: fuse interfacing pieces to Top Front (1) and Top Back (2) linings around the neckline and front opening edges.

5. Sew lining darts: repeat steps 2 and 3 on lining front and back.

6. Sew shoulder seams: place Top Fronts RS together with Top Back and pin at the shoulder seams. Stitch the shoulder seams, backstitching at beginning and end. Press the seam allowances open. Note that the side seams will remain open until later in the construction process.

7. Ease and gather sleeve cap: using a 4-mm- to 5-mm-long gathering stitch, sew two lines of stitching on each sleeve cap between single front notch and double back notches. Sew the first using a 1/2-in-wide (1.3-cm) seam allowance and the second using a 1/4-in-wide (6-mm) seam allowance. Pull up bobbin threads to gather sleeve cap. Gathers will be concentrated between circles, and the ends of the cap should be slightly eased.

8. Sew sleeve to bodice: pin each sleeve to Top armhole, RS together, matching notches and circles. Distribute gathers and easing evenly. Stitch sleeve to bodice. Press seam allowance toward sleeve.

9. Repeat steps 7 and 8 for sleeve linings.

10. Join lining and outer bodice: pin lining to outer bodice, RS together, around neckline and front opening edges. Stitch from the waist edge on one side of front opening around the neckline, to opposite waist edge, pivoting at corners. Grade seam allowances so that outer bodice's are the widest and lining's are narrower. Clip into inner neckline corners and trim away the center front corners.

11. Understitch neckline: from RS, with lining opened out from bodice and seam allowances underneath, stitch 1/8 in (3 mm) from seamline, catching seam allowances in stitching. Turn lining to bodice WS and press neckline edge, rolling seamline just inside.

12. Finish sleeve and underarm: turn top WS out again and pin lining to outer bodice around underarm and sleeve hems, RS together, matching notches and sleeve seams. Stitch from one underarm, pivoting at lower circle to stitch sleeve hem, then pivot at the opposite lower circle and stitch the opposite underarm. Trim outer sleeve and lining seam allowances, first clipping into corner at pivot point. Grade underarm

and sleeve hem's seam allowances so that outer fabric's are the widest and lining's are narrower. Clip underarm and sleeve hem seam allowances every 1/2 in, being sure to clip to pivot point. Turn bodice RS out though shoulders. Understitch the underarm and sleeve hem as far as possible. Press lining to WS of bodice, rolling seamline inside.

13. Sew side seams: flip the lining out from the outer bodice, pin front and back side seams RS together from waist edge to waist edge, matching underarm seam. Stitch the side seams and press seam allowances open.

14. Finish top's hem: turn top WS out and pin outer bodice to lining along lower edge. Stitch, leaving a 3-in-wide (7.6 cm) opening at center back. Grade seam allowances so that outer bodice's are widest and lining's

are narrower, skipping the opening's seam allowances. Turn top RS out through opening. Press the opening's edges inside and press entire bottom edge, rolling seamline just to WS. Slipstitch the opening closed.

15. Sew buttonholes: following pattern markings and your machine's buttonhole instructions, sew buttonholes on right half of top's opening. NOTE: for cropped top, you may wish to reposition the buttonhole markings so that you have four evenly spaced buttonholes, as for waist-length top. A buttonhole spacing tool is a great device for this.

16. Sew buttons to left side of opening at the button marks.

Enjoy your finished Picnic Top!

PATTERN PIECE LOCATION GUIDE

Here is a list to help you locate the pattern pieces on the letter-size tiled pages and AO pattern sheets. The tiled pieces and AO sheets are included as separate pdf files as part of this digital pattern.

PC#	Piece Name	Tiled	AO	PC#	Piece Name	Tiled	AO	
A cup				9-17				1
1	Top Front, A cup	8-9,12-17	1	1	Top Front, F/G cup	37, 39-41, 43-45	3	
4	Front interfacing, A cup	10-11, 13-14, 16-17	1	4	Front interfacing, F/G cup	38, 41-42, 45-46	3	
B/C cup				18-26				2
1	Top Front, B/C cup	18-19, 21-26	2	1	Top Front, H cup	47-48, 49-51, 53-55	3	
4	Front interfacing, B/C cup	19-20, 22-23, 25-26	2	4	Front interfacing, H cup	48, 51-52, 56	3	
D/DD cup				27-44				2
1	Top Front, D/DD cup	27, 29-31, 33-35	2	2	Top Back	3-8	1	
4	Front interfacing, D/DD cup	28, 31-32, 36	2	3	Sleeve	1-2	1	
Every cup size also needs				1-8				1
				5	Back interfacing	3-4	1	

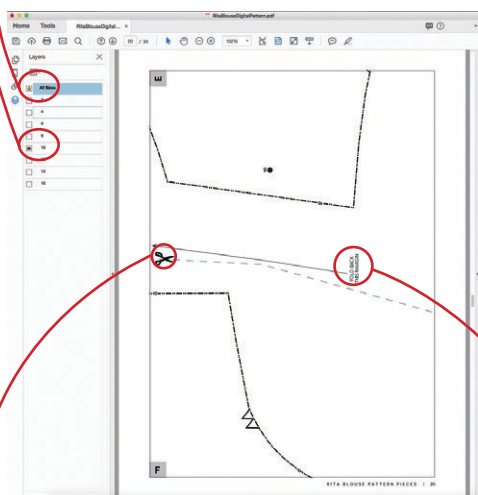
HOW TO USE THIS PATTERN

The pattern pieces are tiled so you can print them on Letter (8½ x 11) or A4 size paper. You can also send the A0 pattern sheet PDF to a local or online printer (like www.pdfplotting.com) to print on large sheets (36" x 48" for U.S. or A0 for international).

This pattern includes size layers. To get the best results, open either the Tiled or A0 pattern pieces PDF in Acrobat Reader.

Open the Layers Palette (View>Show/Hide>Navigation Panes>Layers) and hide all of the layer(s) except for the ones you want to print by clicking on the eye icon.

The All Sizes layer has general pattern information and will always print.



WORKING WITH THE TILED PIECES

Go to File>Print and change the page range to the pages you need for the pieces you've chosen (see Pattern Pieces Printing Index). Make sure the Page Sizing settings to 100% or Actual Size. Test this after printing by measuring the 1" test box on the first page of the bodice pattern pieces.

Cut apart any pattern pieces that share a page by cutting on the gray long dashed lines. Then fold back the page margins on each page as directed.

Tape the pages together, butting up the folded page edges with the gray margin lines, matching up the letters in gray boxes.

MORE FROM GERTIE



Purchase more patterns at charmpatterns.com.