

CHARM PATTERNS *by Gertie*

SWING COAT
 Sizes 2-20
 with cup sizes A-H

5/8 inch (1.5 cm) seam allowances are included on all pattern pieces.

Page 1 of 7

PAGE 1 PATTERN PIECES

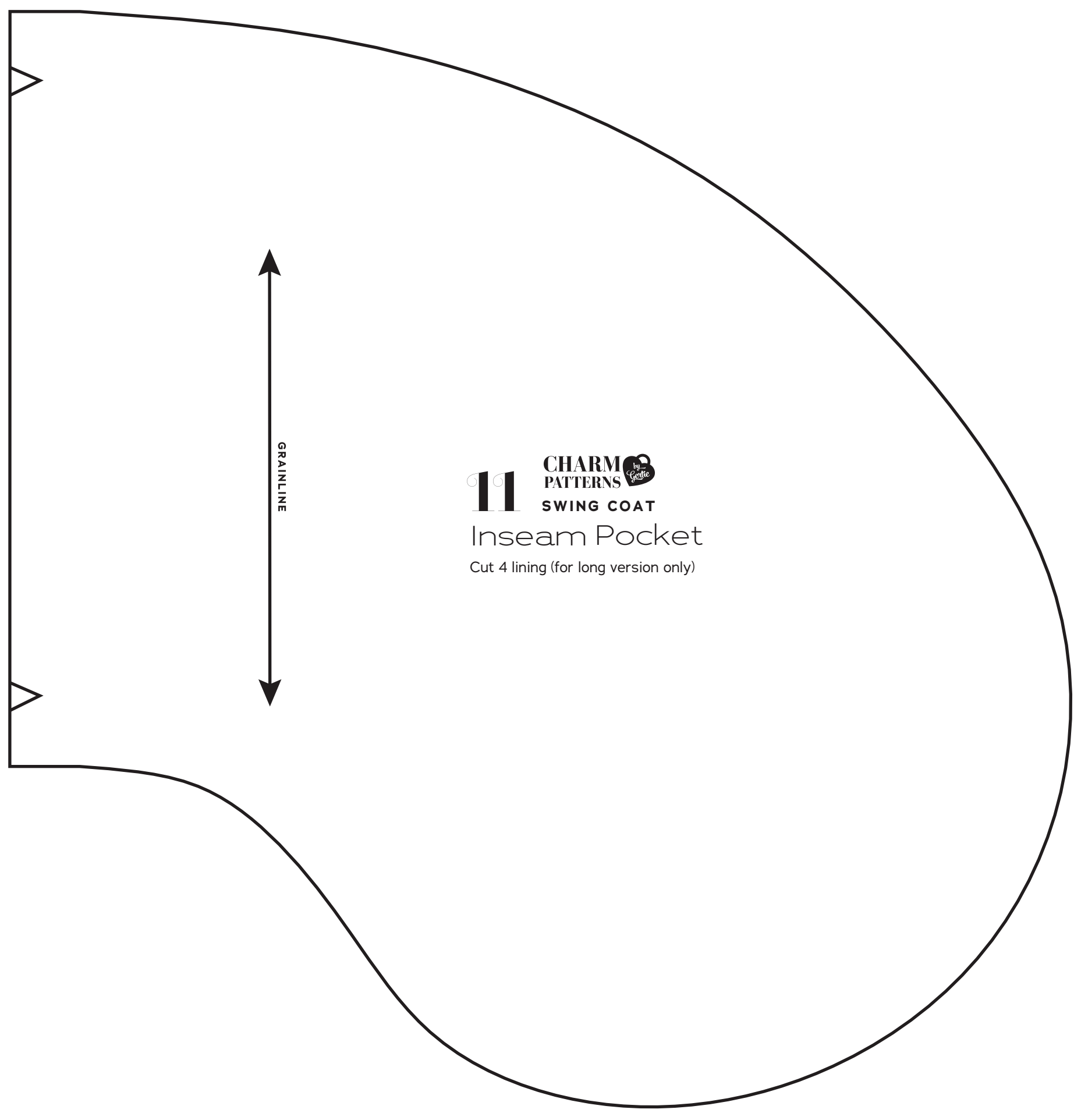
- 1 Coat Front, A-C Cup
- 1 Coat Front, D-H Cup
- 4 Back Neck Facing
- 7 Bound Buttonhole Patch
- 11 Inseam Pocket

PATTERN SIZE KEY

- 2 —————
- 4 - - - - -
- 6 - - - - -
- 8 - - - - -
- 10 - - - - -
- 12 - - - - -
- 14 - - - - -
- 16 - - - - -
- 18 - - - - -
- 20 - - - - -

SYMBOL KEY

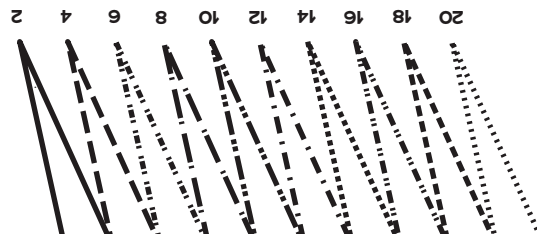
- ↔ grainline arrow
- ↔ match point/ placement mark
- 1" test square



CENTER FRONT

CHARM PATTERNS SWING COAT
 Coat Front, A-C Cup
 Cut 2 fabric

GRAINLINE

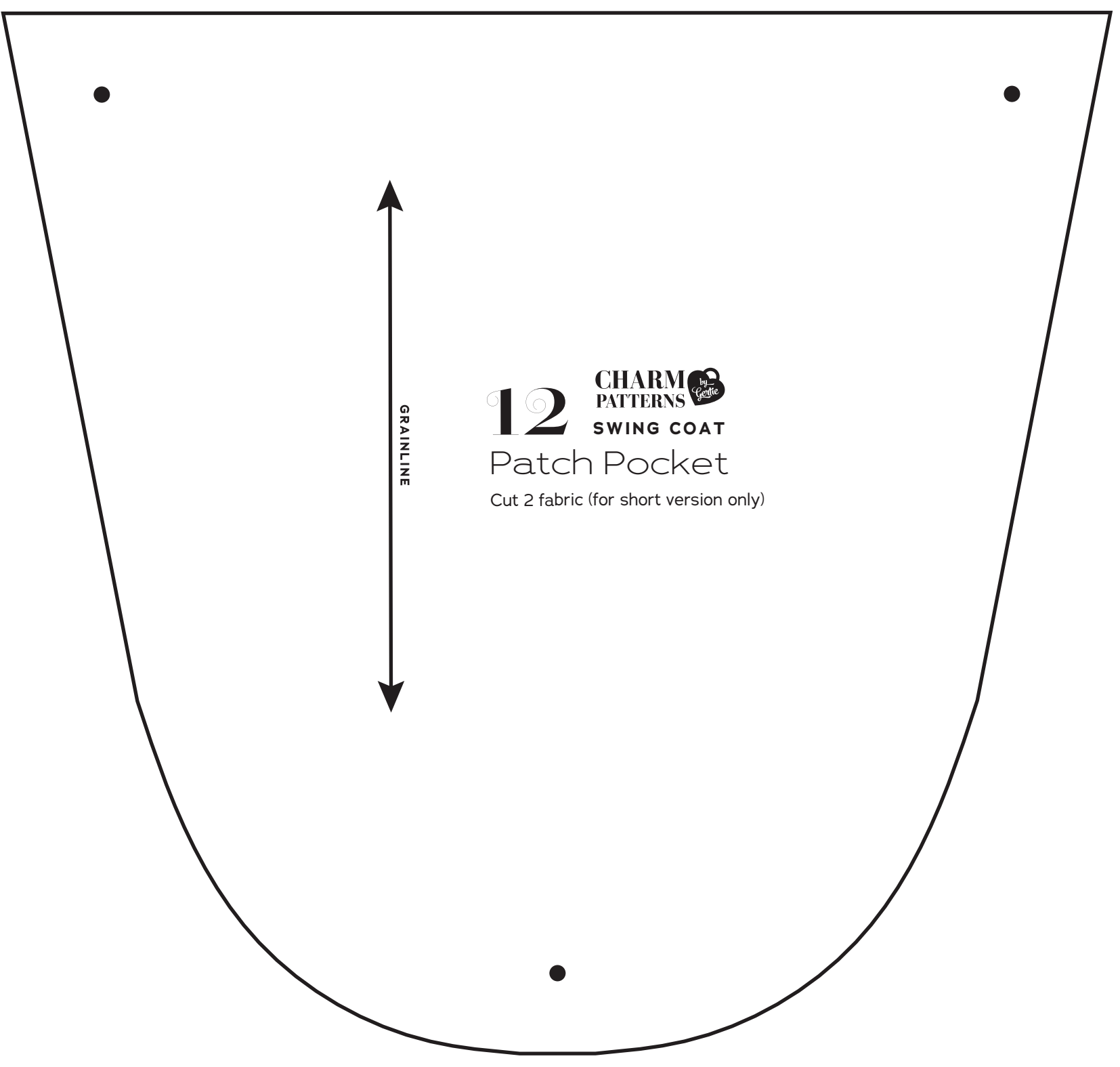
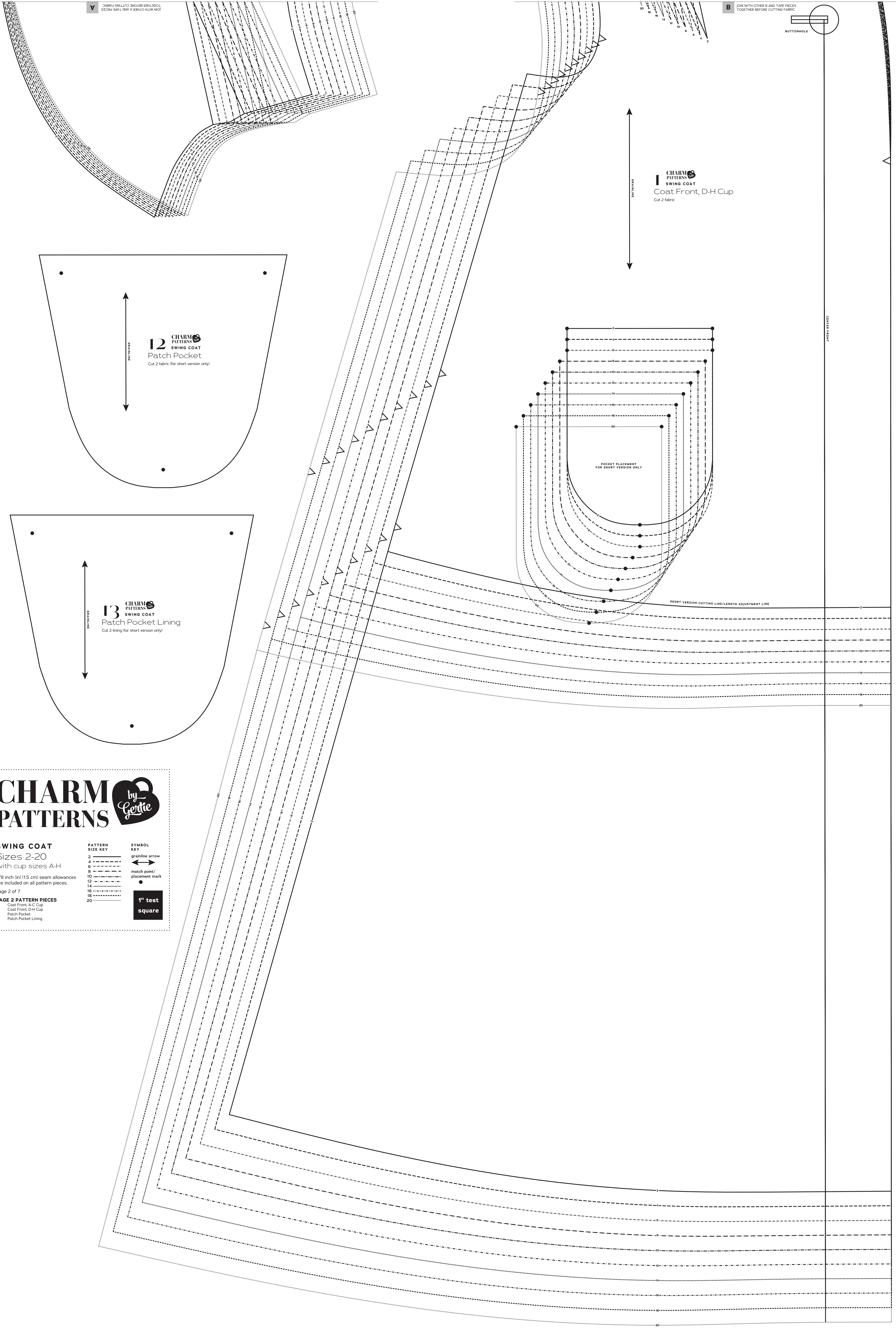
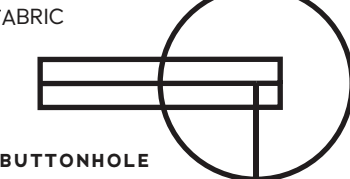


JOIN WITH OTHER A AND TAPE PIECES TOGETHER BEFORE CUTTING FABRIC

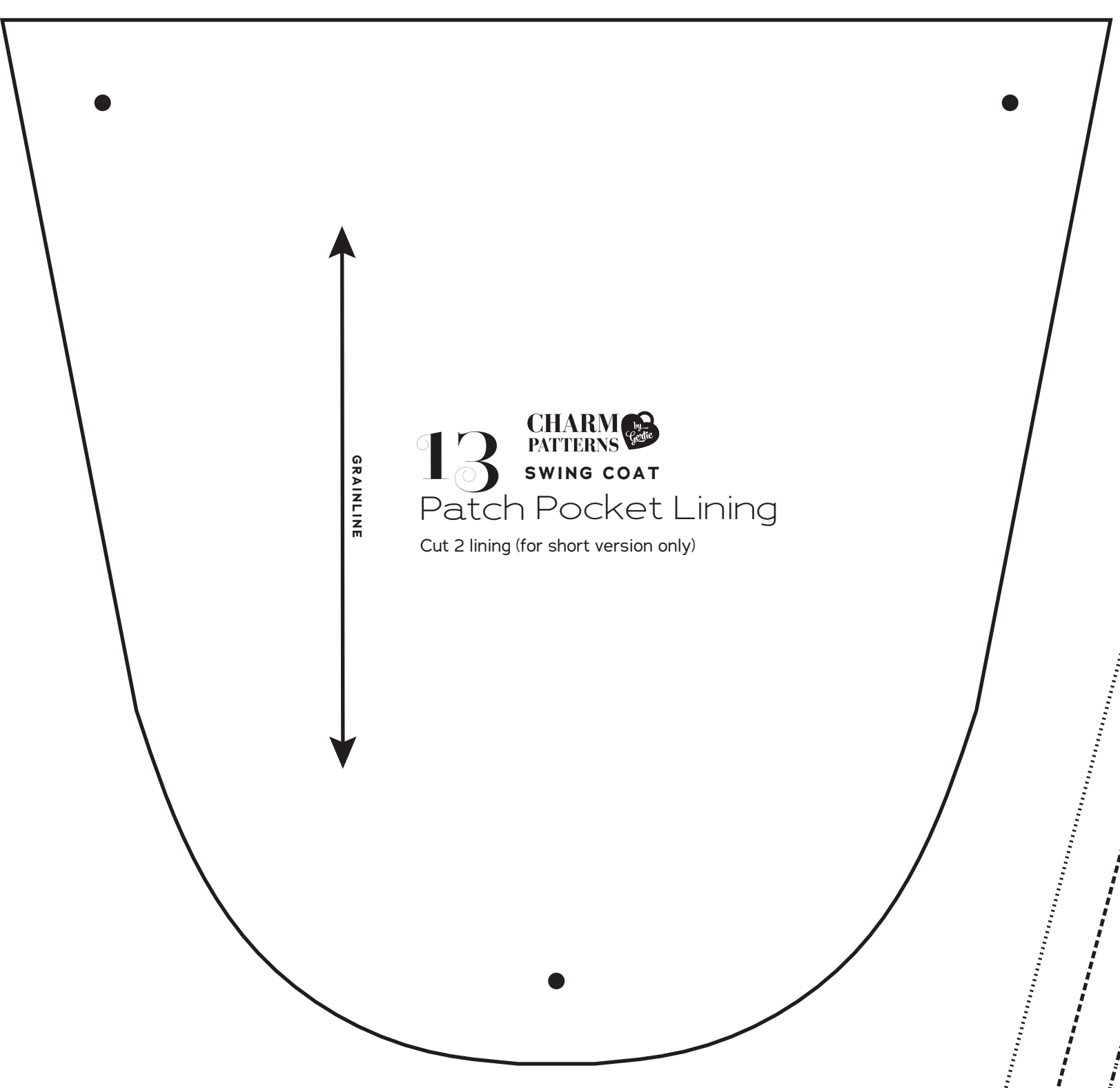
JOIN WITH OTHER B AND TAPE PIECES TOGETHER BEFORE CUTTING FABRIC

JOIN WITH OTHER BAND AND TAPE PIECES TOGETHER BEFORE CUTTING FABRIC

JOIN WITH OTHER BAND AND TAPE PIECES TOGETHER BEFORE CUTTING FABRIC



12 CHARM PATTERNS SWING COAT Patch Pocket Cut 2 fabric (for short version only)



13 CHARM PATTERNS SWING COAT Patch Pocket Lining Cut 2 lining (for short version only)

SHIRT TUBES

1 CHARM PATTERNS SWING COAT Coat Front, D-H Cup Cut 2 fabric

POCKET PLACEMENT FOR SHORT VERSION ONLY

SHORT VERSION CUTTING LINE/LENGTH ADJUSTMENT LINE

CENTER FRONT

CHARM PATTERNS by Gertie

SWING COAT
Sizes 2-20
with cup sizes A-H

5/8 inch (1.5 cm) seam allowances are included on all pattern pieces.

Page 2 of 7

PAGE 2 PATTERN PIECES
1 Coat Front, A-C Cup
1 Coat Front, D-H Cup
12 Patch Pocket
13 Patch Pocket Lining

| PATTERN SIZE KEY | SYMBOL KEY |
|------------------|--------------------------------|
| 2 ———— | grainline arrow |
| 4 - - - - - | match point/ placement mark |
| 6 - - - - - | |
| 8 - - - - - | |
| 10 - - - - - | |
| 12 - - - - - | |
| 14 - - - - - | |
| 16 - - - - - | |
| 18 - - - - - | |
| 20 - - - - - | 1" test square |

CHARM by Gertie PATTERNS

SWING COAT
 Sizes 2-20
 with cup sizes A-H

5/8 inch (1.5 cm) seam allowances are included on all pattern pieces.

Page 3 of 7

PAGE 3 PATTERN PIECES

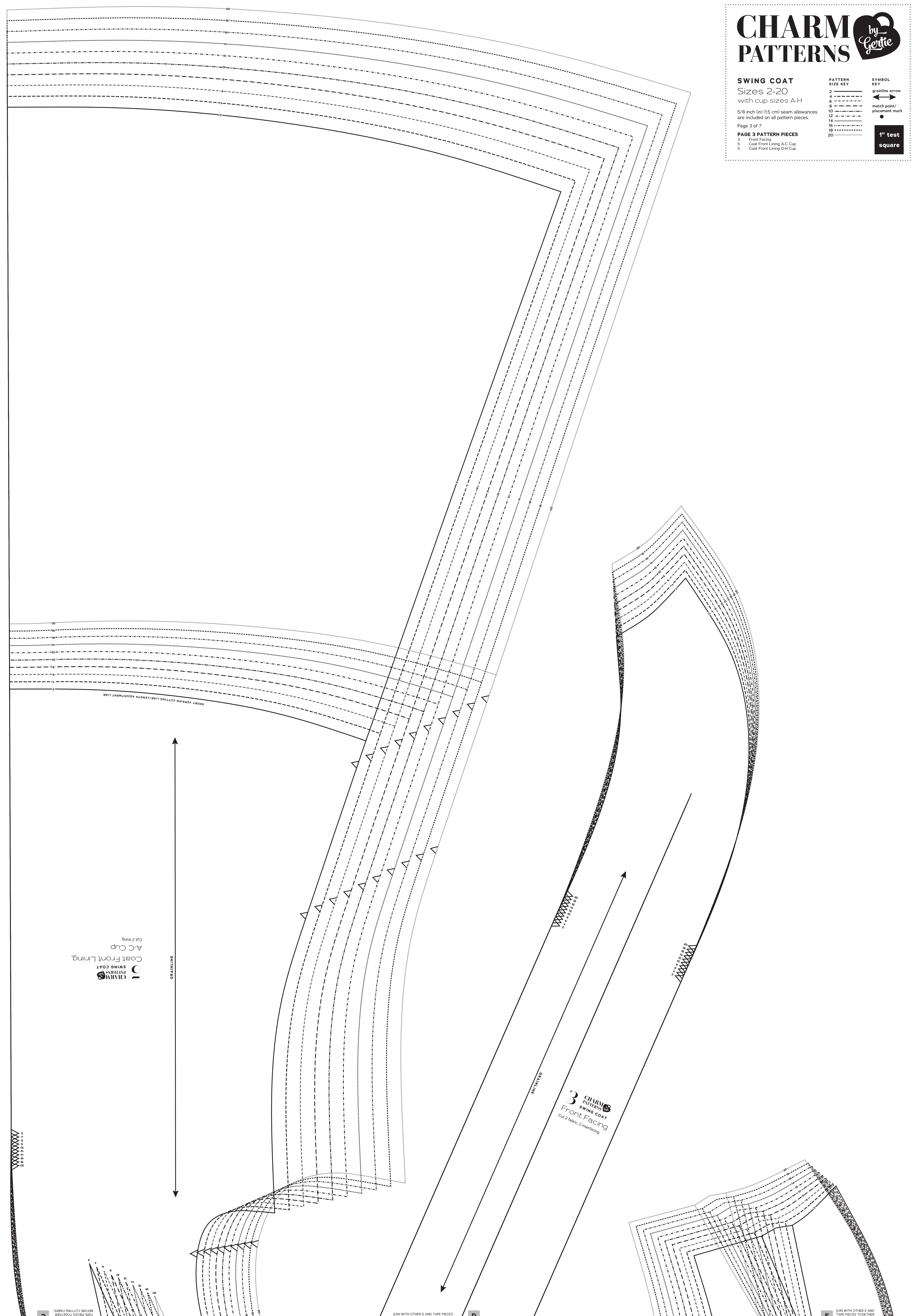
- 3 Front Facing
- 5 Coat Front Lining, A-C Cup
- 5 Coat Front Lining, D-H Cup

PATTERN SIZE KEY

| |
|----|
| 2 |
| 4 |
| 6 |
| 8 |
| 10 |
| 12 |
| 14 |
| 16 |
| 18 |
| 20 |

SYMBOL KEY

- grainline arrow
- match point/ placement mark
- 1" test square



CHARM PATTERNS
 SWING COAT
 Coat Front Lining,
 A-C Cup
 Cut 2 lining

3 CHARM PATTERNS
 SWING COAT
 Front Facing
 Cut 2 fabric, 2 interfacing

C JOIN WITH OTHER C AND TAPE PIECES TOGETHER BEFORE CUTTING FABRIC

D JOIN WITH OTHER D AND TAPE PIECES TOGETHER BEFORE CUTTING FABRIC

E JOIN WITH OTHER E AND TAPE PIECES TOGETHER BEFORE CUTTING FABRIC

CHARM by Gertie PATTERNS

SWING COAT Sizes 2-20 with cup sizes A-H

5/8 inch (1.5 cm) seam allowances
are included on all pattern pieces.

Page 4 of 7

PAGE 4 PATTERN PIECES

- 3 Front Facing
- 5 Coat Front Lining, A-C Cup
- 5 Coat Front Lining, D-H Cup

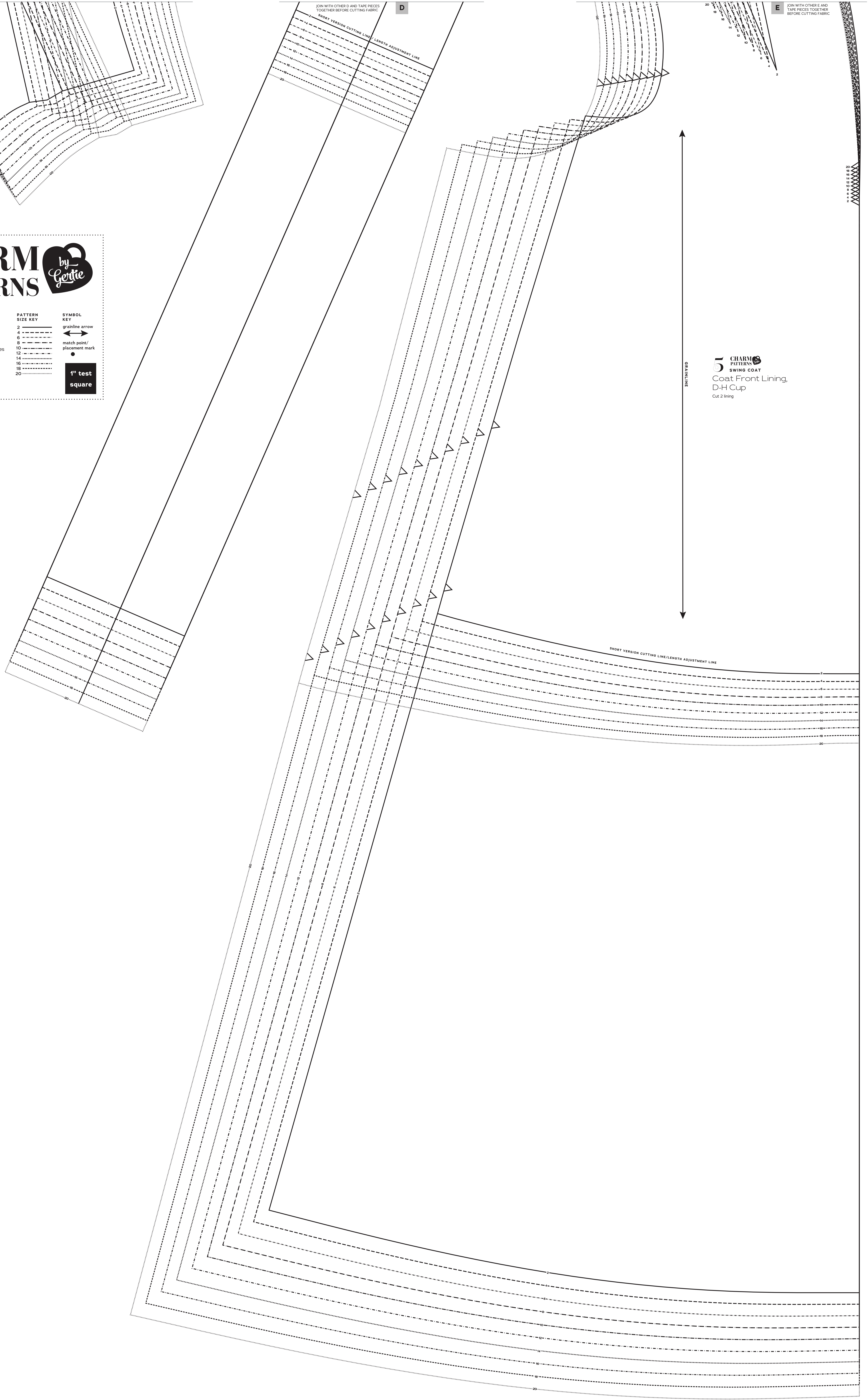
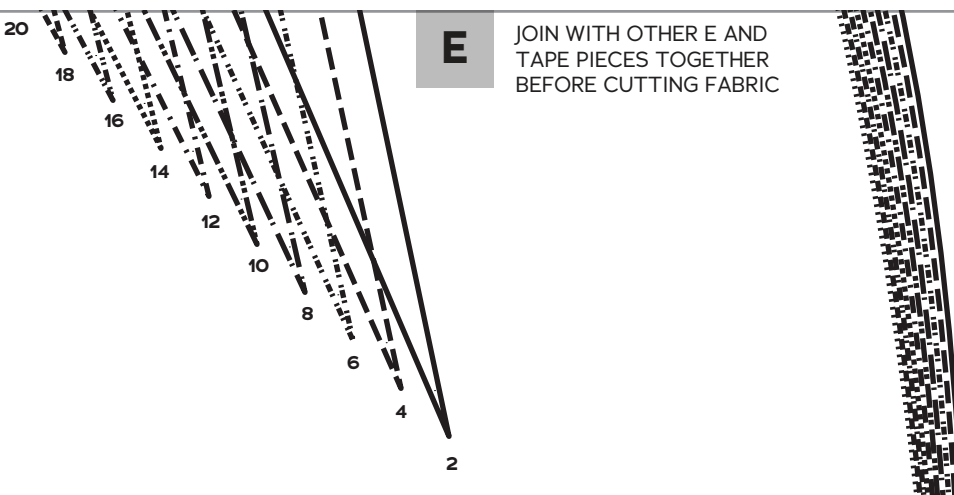
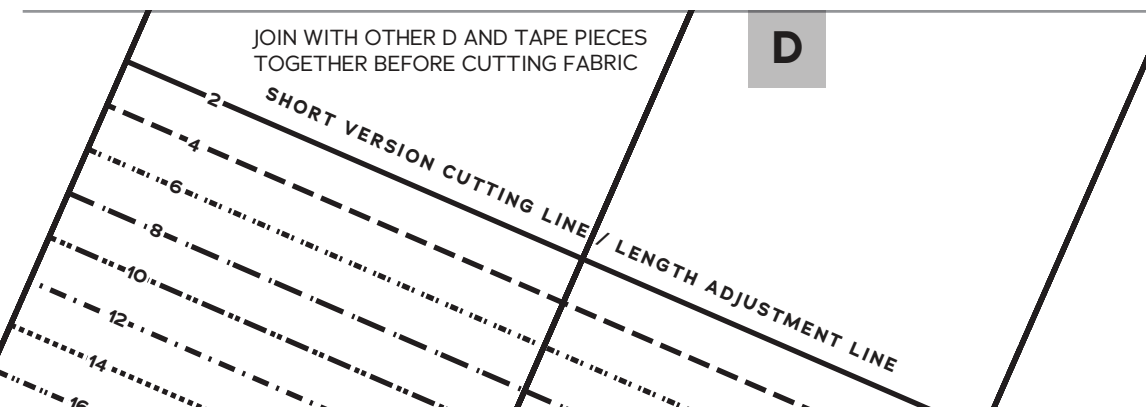
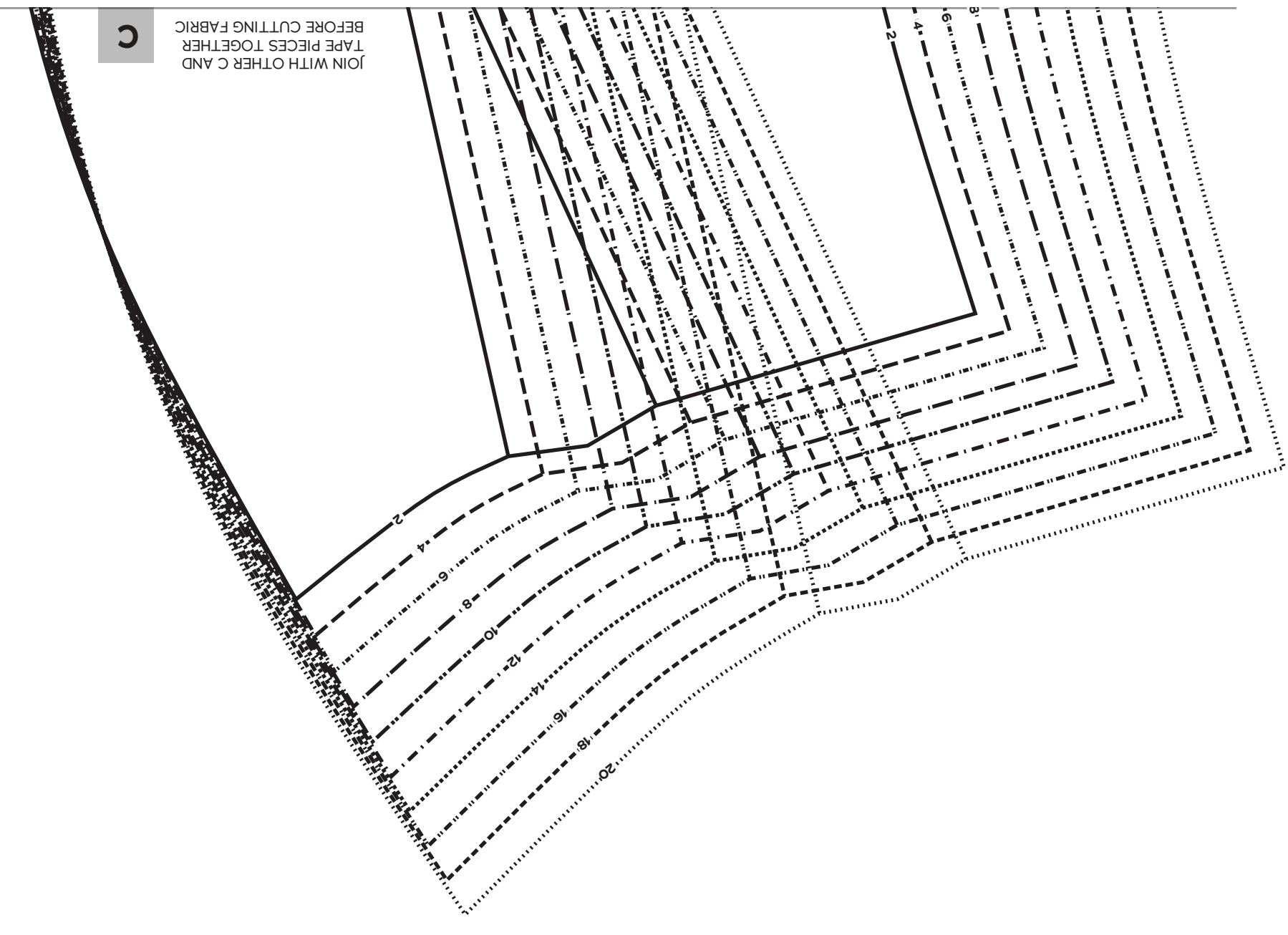
PATTERN SIZE KEY

- 2 —————
- 4 - - - - -
- 6 - - - - -
- 8 - - - - -
- 10 - - - - -
- 12 - - - - -
- 14 - - - - -
- 16 - - - - -
- 18 - - - - -
- 20 - - - - -

SYMBOL KEY

- grainline arrow
- match point/
placement mark

1" test
square



5 CHARM PATTERNS
SWING COAT
Coat Front Lining,
D-H Cup
Cut 2 lining

CHARM PATTERNS *by Gertie*

SWING COAT Sizes 2-20 with cup sizes A-H

5/8 inch (1.5 cm) seam allowances are included on all pattern pieces.

Page 5 of 7

PAGE 5 PATTERN PIECES

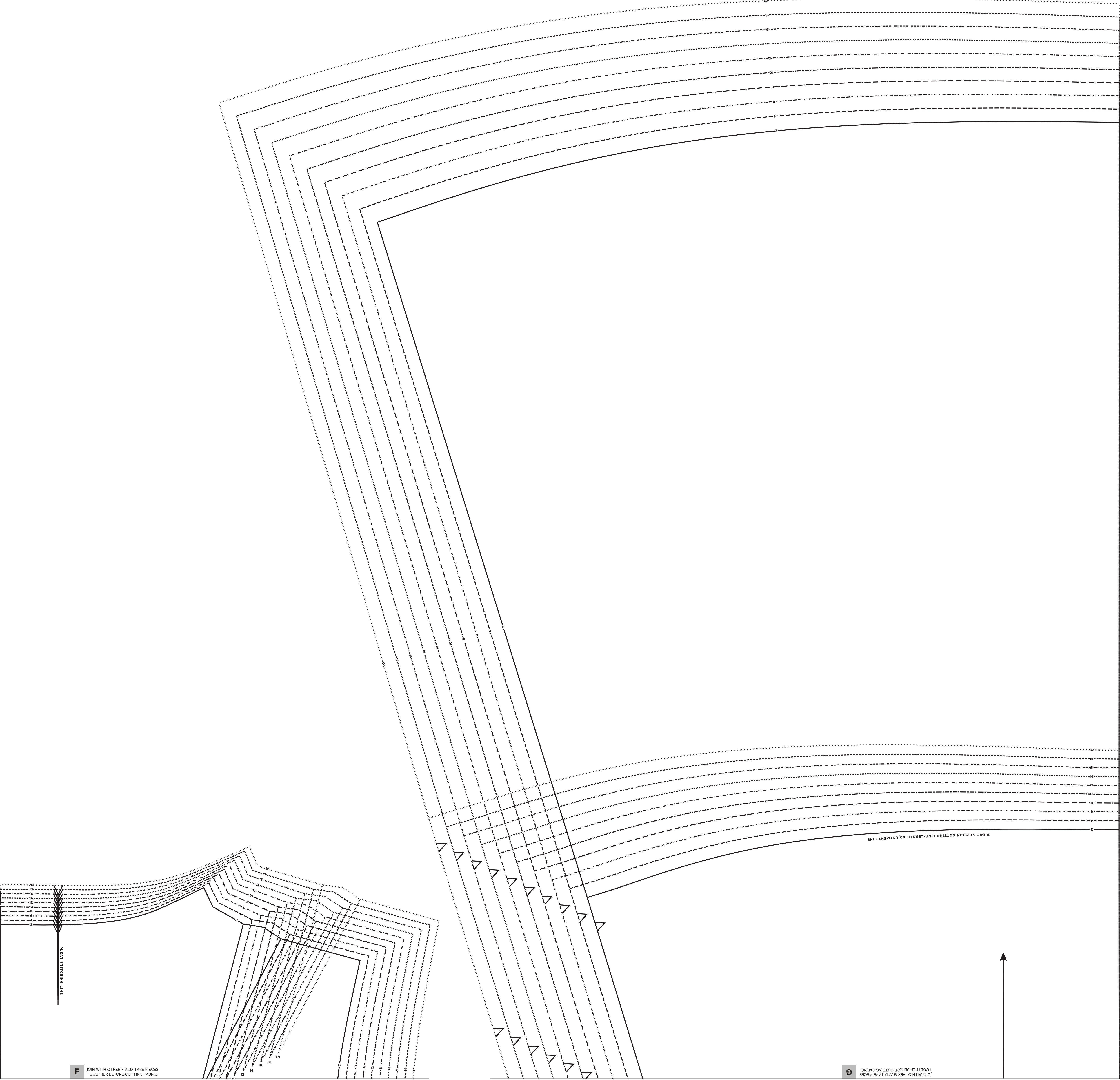
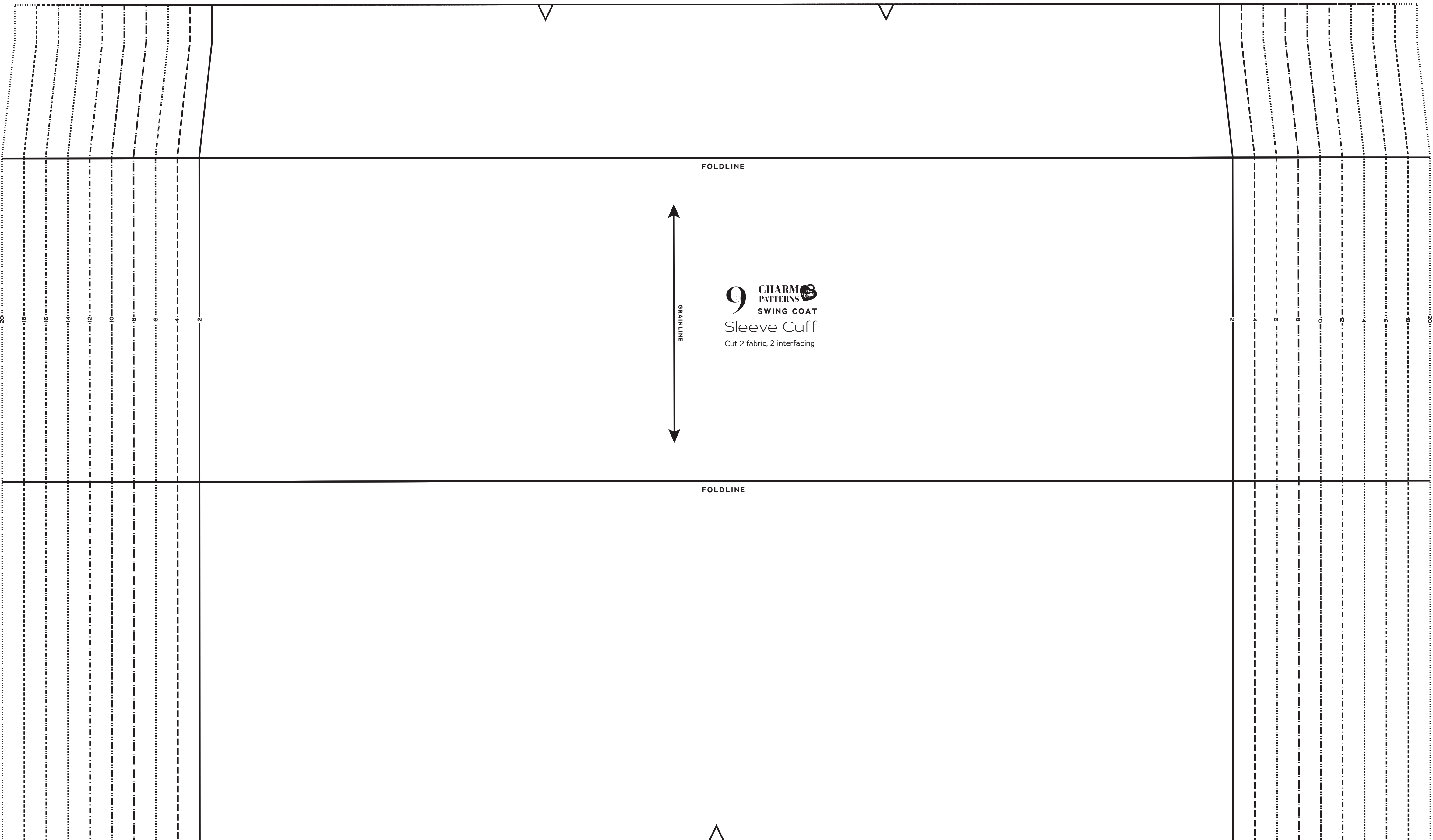
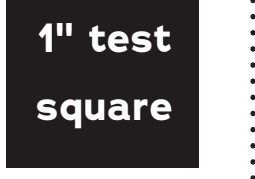
- 2 Coat Back
- 6 Coat Back Lining
- 9 Sleeve Cuff

PATTERN SIZE KEY

| | |
|----|-------|
| 2 | ----- |
| 4 | ----- |
| 6 | ----- |
| 8 | ----- |
| 10 | ----- |
| 12 | ----- |
| 14 | ----- |
| 16 | ----- |
| 18 | ----- |
| 20 | ----- |

SYMBOL KEY

- grainline arrow
- match point/ placement mark

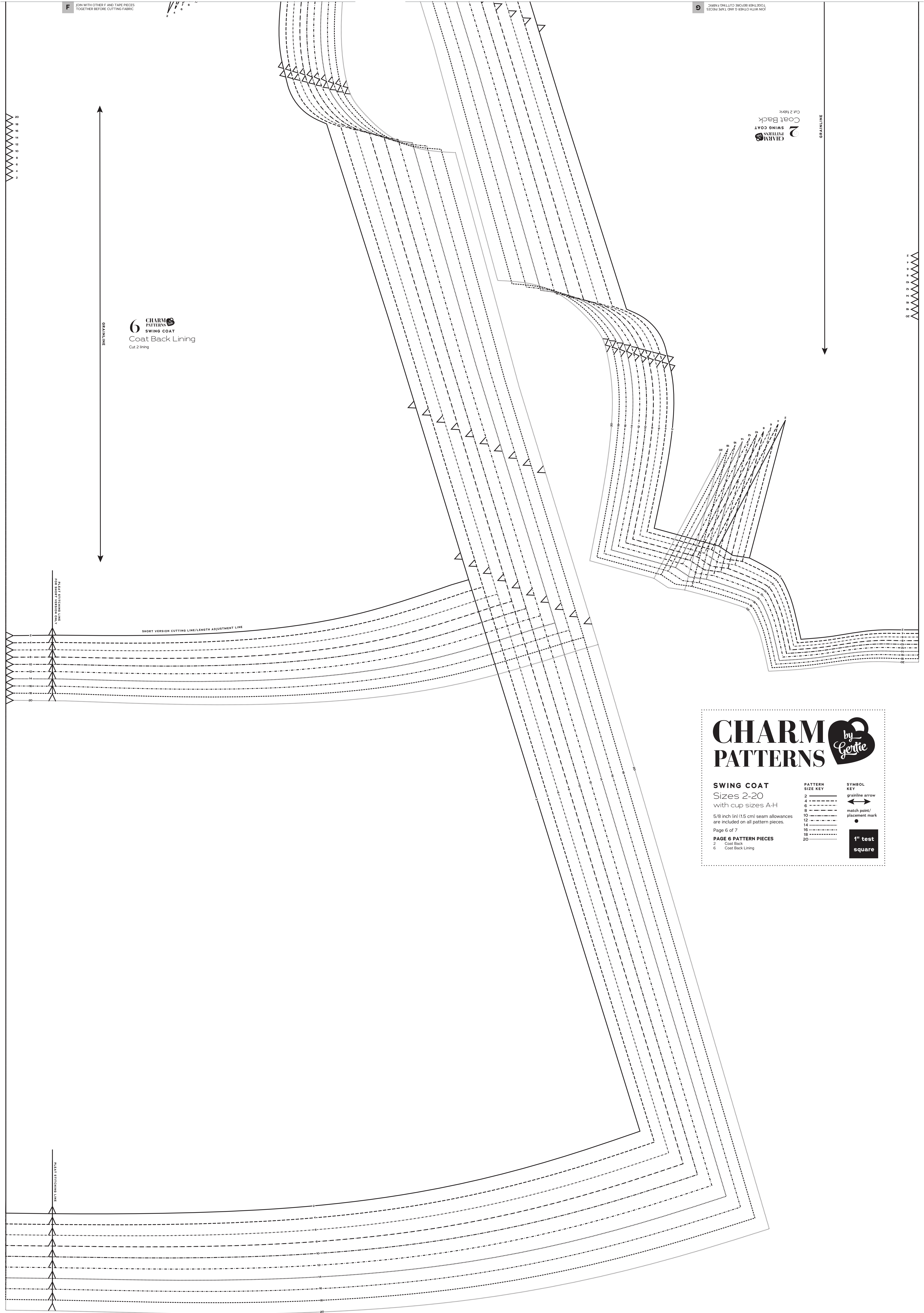


F JOIN WITH OTHER F AND TAPE PIECES TOGETHER BEFORE CUTTING FABRIC.

G JOIN WITH OTHER G AND TAPE PIECES TOGETHER BEFORE CUTTING FABRIC.

F JOIN WITH OTHER F AND TAPE PIECES TOGETHER BEFORE CUTTING FABRIC

G JOIN WITH OTHER G AND TAPE PIECES TOGETHER BEFORE CUTTING FABRIC



6 CHARM PATTERNS SWING COAT Coat Back Lining Cut 2 lining

6 CHARM PATTERNS SWING COAT Coat Back Cut 2 fabric

1
2
3
4
5
6
7
8
9
10
11
12
13
14
15
16
17
18
19
20

1
2
3
4
5
6
7
8
9
10
11
12
13
14
15
16
17
18
19
20

GRAINLINE

GRAINLINE

SHORT VERSION CUTTING LINE/LENGTH ADJUSTMENT LINE

SEAT FITTING LINE FOR SHORT VERSION ONLY

SEAT FITTING LINE

CHARM PATTERNS *by Gertie*

SWING COAT
 Sizes 2-20
 with cup sizes A-H

5/8 inch (1.5 cm) seam allowances are included on all pattern pieces.

Page 6 of 7

PAGE 6 PATTERN PIECES
 2 Coat Back
 6 Coat Back Lining

| PATTERN SIZE KEY | SYMBOL KEY |
|------------------|-----------------------------|
| 2 | grainline arrow |
| 4 | match point/ placement mark |
| 6 | 1" test square |
| 8 | |
| 10 | |
| 12 | |
| 14 | |
| 16 | |
| 18 | |
| 20 | |

CHARM by *Gertie* PATTERNS

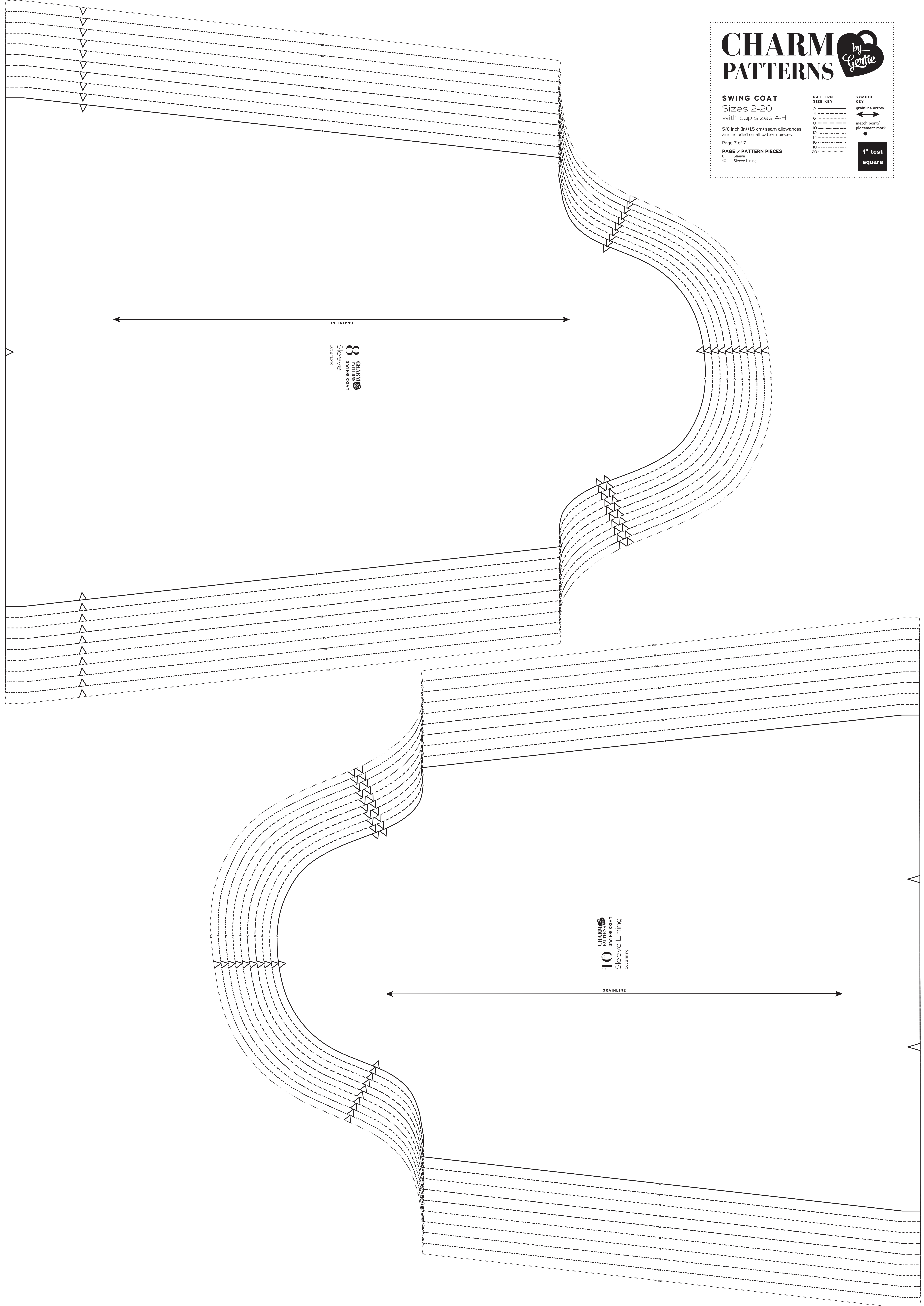
SWING COAT
Sizes 2-20
with cup sizes A-H

5/8 inch (1.5 cm) seam allowances
are included on all pattern pieces.

Page 7 of 7

PAGE 7 PATTERN PIECES
8 Sleeve
10 Sleeve Lining

| PATTERN SIZE KEY | | SYMBOL KEY | |
|------------------|-----------|------------|--------------------------------|
| 2 | ----- | → | grainline arrow |
| 4 | - - - - - | ↔ | match point/ placement mark |
| 6 | | ● | match point/ placement mark |
| 8 | | ■ | 1" test square |
| 10 | | | |
| 12 | | | |
| 14 | | | |
| 16 | | | |
| 18 | | | |
| 20 | | | |



GRAINLINE

CHARM by *Gertie*
8
Sleeve
Cut 2 fabric

CHARM by *Gertie*
10
Sleeve Lining
Cut 2 lining

GRAINLINE