



BROWN LEATHER

FOUNDATION TUTORIAL

siegestudios.co.uk



INTRODUCTION

Hi, Darren here and in this tutorial, I will be showing you how to paint Brown Leather. leather is a material that is very simple to paint and is a staple of all types of miniatures.

These pouches are from the Space Marine Intercessor kit but this tutorial can be applied to pretty much anything.

PAINTS:

CITADEL

- | | |
|--|--|
|  <i>Thondia Brown</i> |  <i>Balor Brown</i> |
|  <i>Mournfang Brown</i> |  <i>Screaming skull</i> |

SCALE 75

-  *Heavy Metal*

TOOLS:



I just needed a small selection of typical brush sizes for this - I prefer Kolinsky sable.



PAINT STEP BY STEP WITH THE ARTIST!

Wherever you see this button this tutorial has an accompanying audio commentary from the artist.

BROWN LEATHER



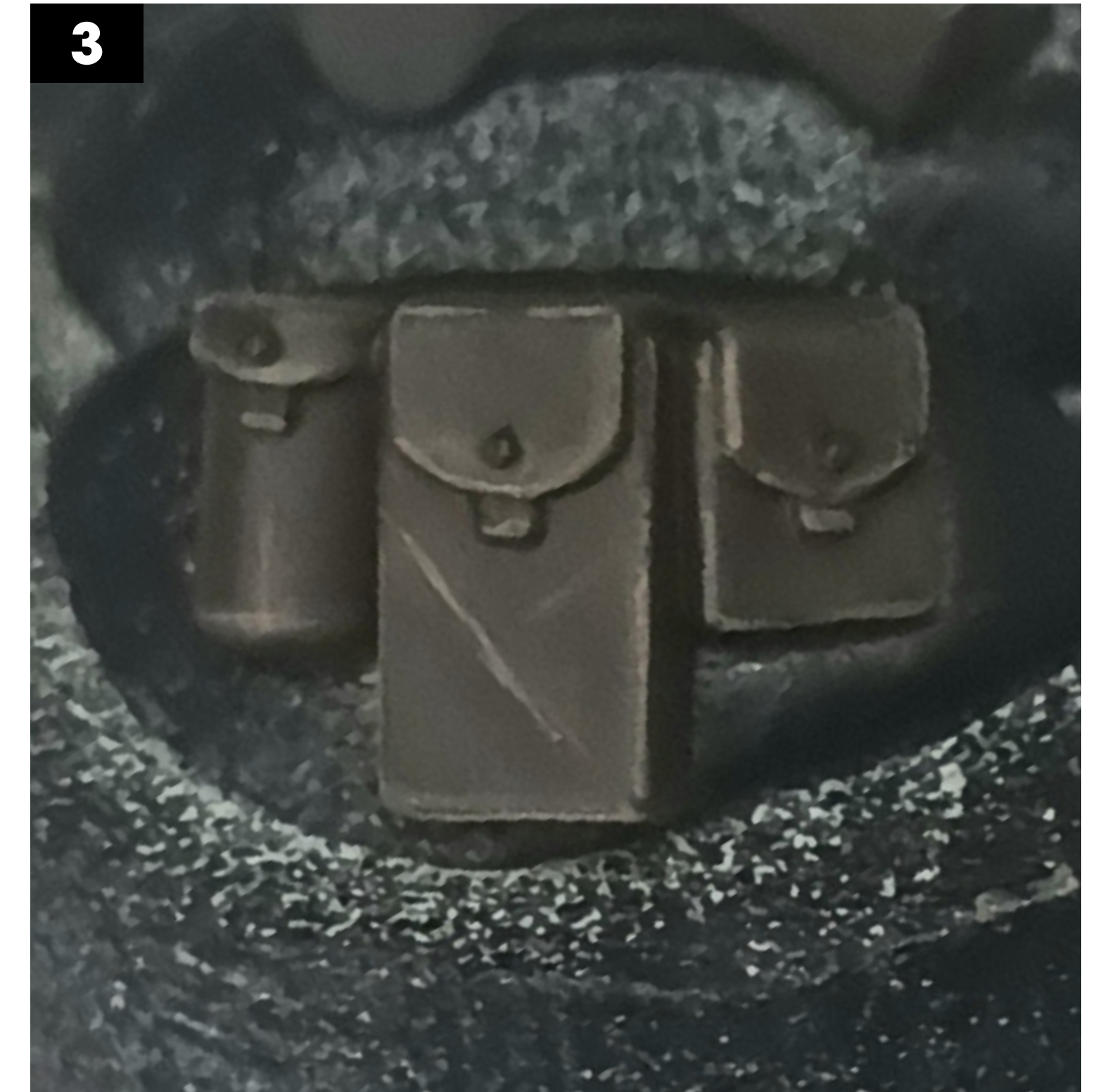
STEP 1

Apply a basecoat of **Thondia Brown** to the whole leather surface.



STEP 2

Next, apply an edge highlight of **Mournfang Brown**.



STEP 3

Apply a further edge highlight of **Balor Brown**.

BROWN LEATHER



STEP 4

Apply a final highlight to the of **Screaming Skull**.



STEP 5

Paint any pouch buttons with **Heavy Metal**

*But any bright silver will work - Citadel's **Ironbreaker** would make for a great replacement.*



This will give you a clean looking leather. If you apply the highlights in stippled layers with coloured glazes between each highlight step, you can easily achieve a more weathered finish.

I hope this tutorial was helpful and I will see you in the next one.

