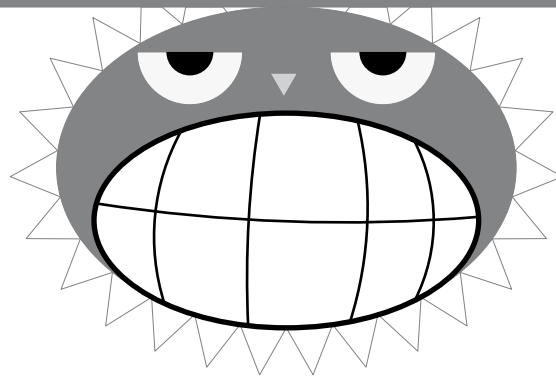
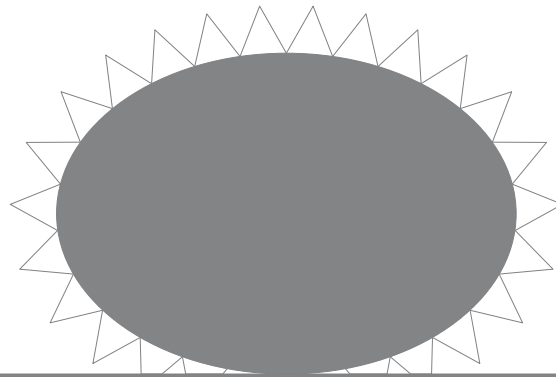
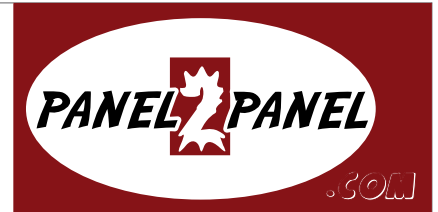
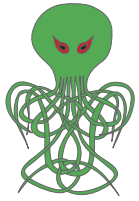
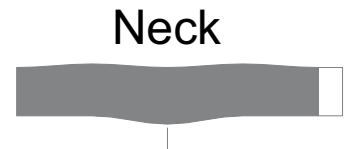


7.50 inches [19.05 cm]

Inches



Head

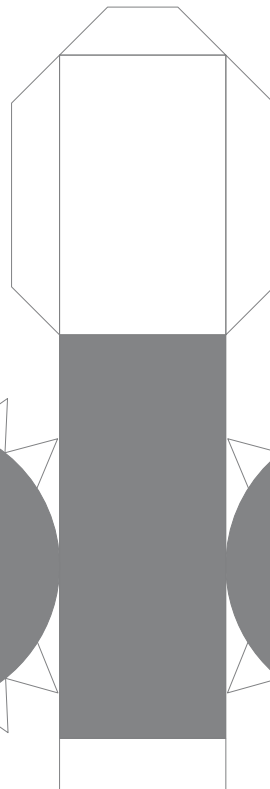


Neck

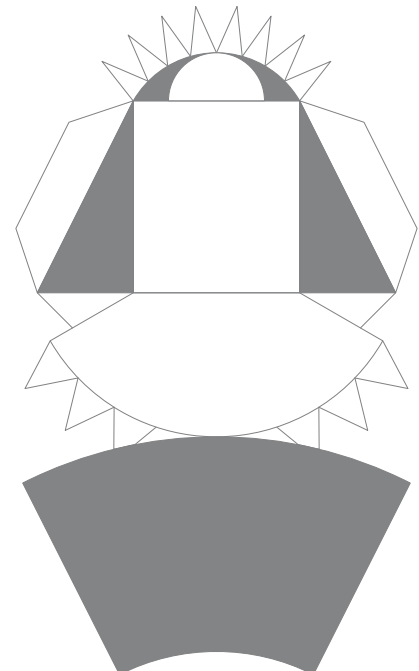
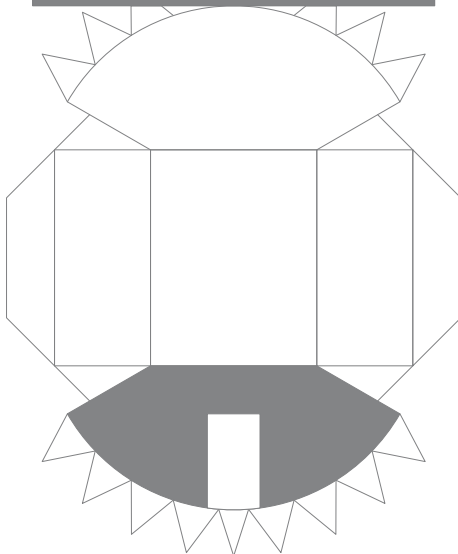
Bottom



Chest



Back

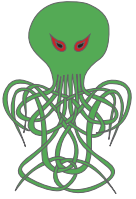


10.00 inches [25.40 cm]

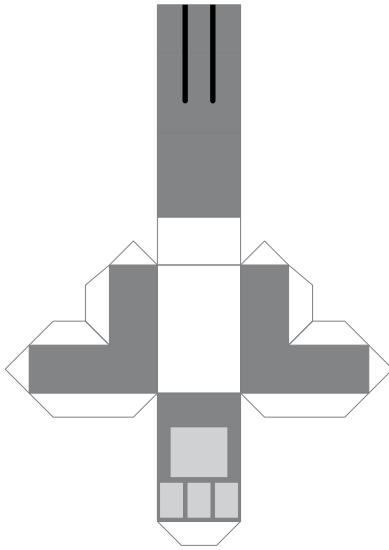
cm

cm

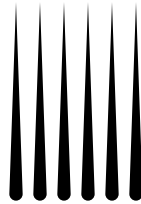
inches



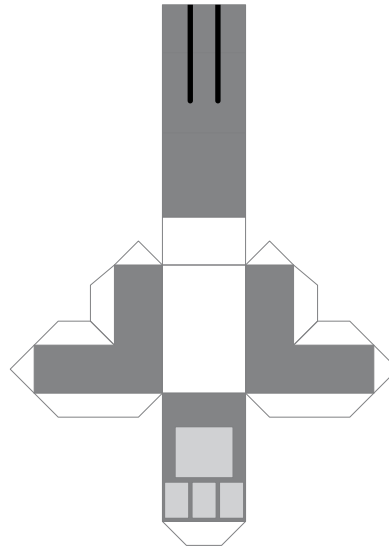
Right Fore leg



Whiskers



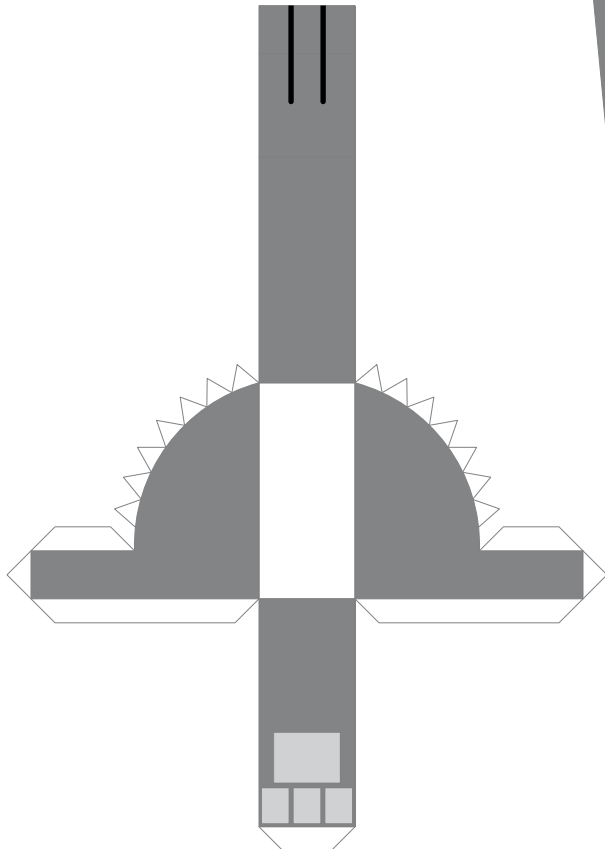
Left Fore leg



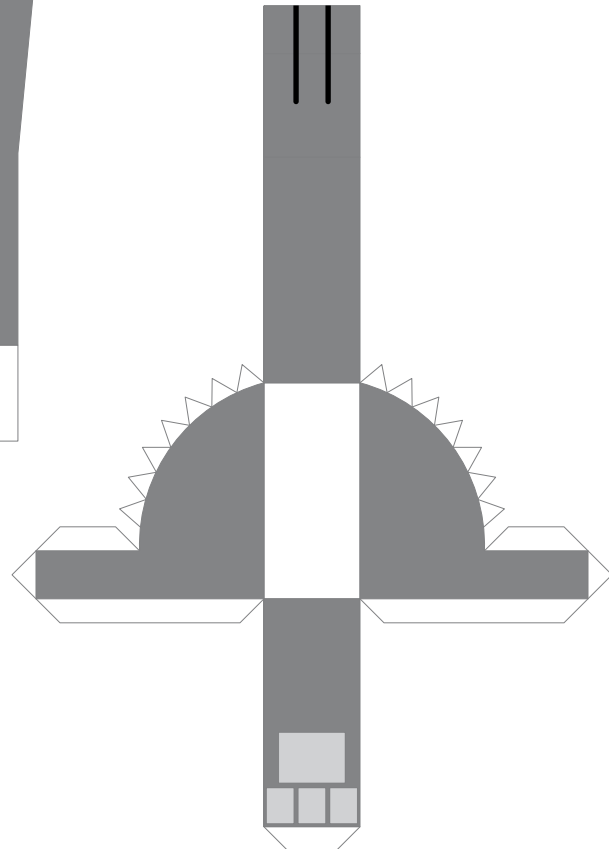
Tail



Hind leg



Hind leg



Ear



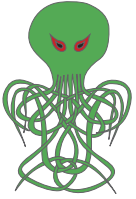
Ear



10.00 inches [25.40 cm]

cm

cm

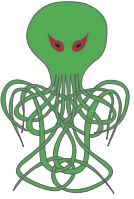


This is the **BACK SIDE** of page 2.



After you have printed the **FRONT SIDE**,
turn the paper over and print this page on the back.
Be sure that the **TOP** of the paper goes into the printer first.





Please read ALL of these instructions before beginning.

This is a model of "Spontaneous," or "Spons," a creation of Amber "Glych" Greenlee for her Web comic, "No Stereotypes." The model is intended to be printed at 7.5 inches by 10 inches (190.5mm x 254mm), so it should print correctly on US Letter or A4 size sheets of 90 lb (165 gram per square meter) index card.

Pay attention to the third page; it is the back of the second page. After printing the second page, flip the sheet over and put it back into your printer, top edge first, then print the third page. This will apply color to the backs of the ears and the tail.

The finished scale model is about 4.5 inches (115 mm) tall.

Assembly is per the diagram and callouts below. Score all the tabs and lines except the tail, the neck, and the tab on the rectangular portion of the head. Pre-fold and dry-fit all parts before applying any glue.

The seam of the neck goes to the back.

The seam of the head goes to the bottom.

The tail can be curved and recurved as desired.

The ears may be positioned as desired.

