

**CHARM ARTIST GLEATIVE**  
**ARTIST APRON DRESS**

Sizes 2-20  
 with cup sizes A-H

5/8 inch (1.5 cm) seam allowances are included on all pattern pieces.

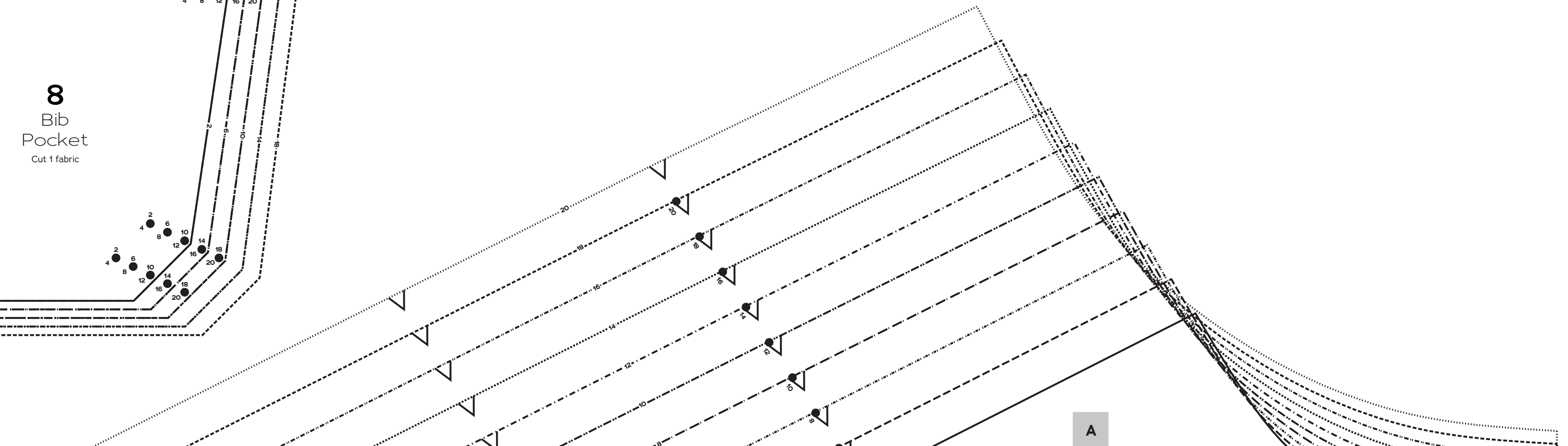
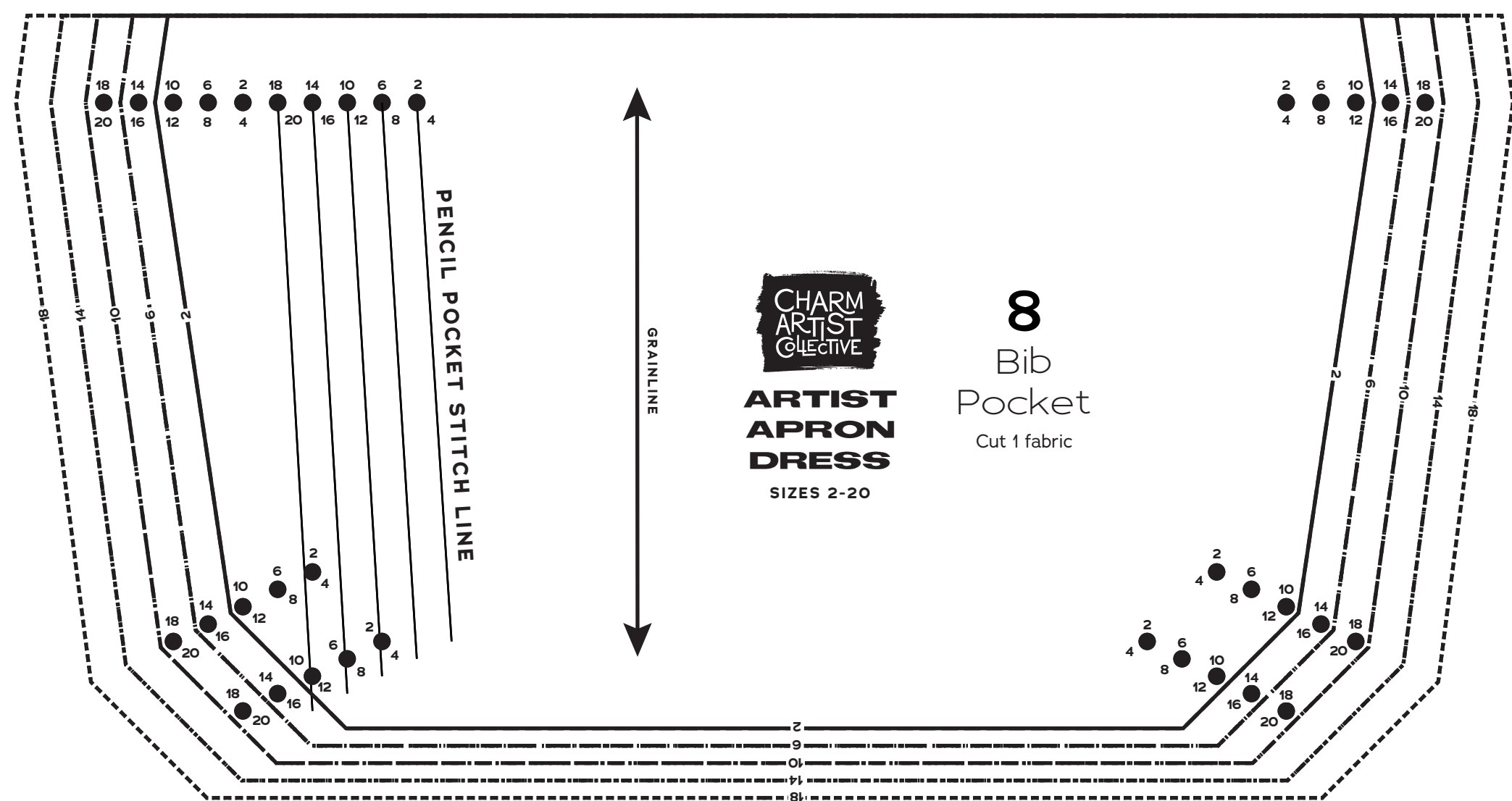
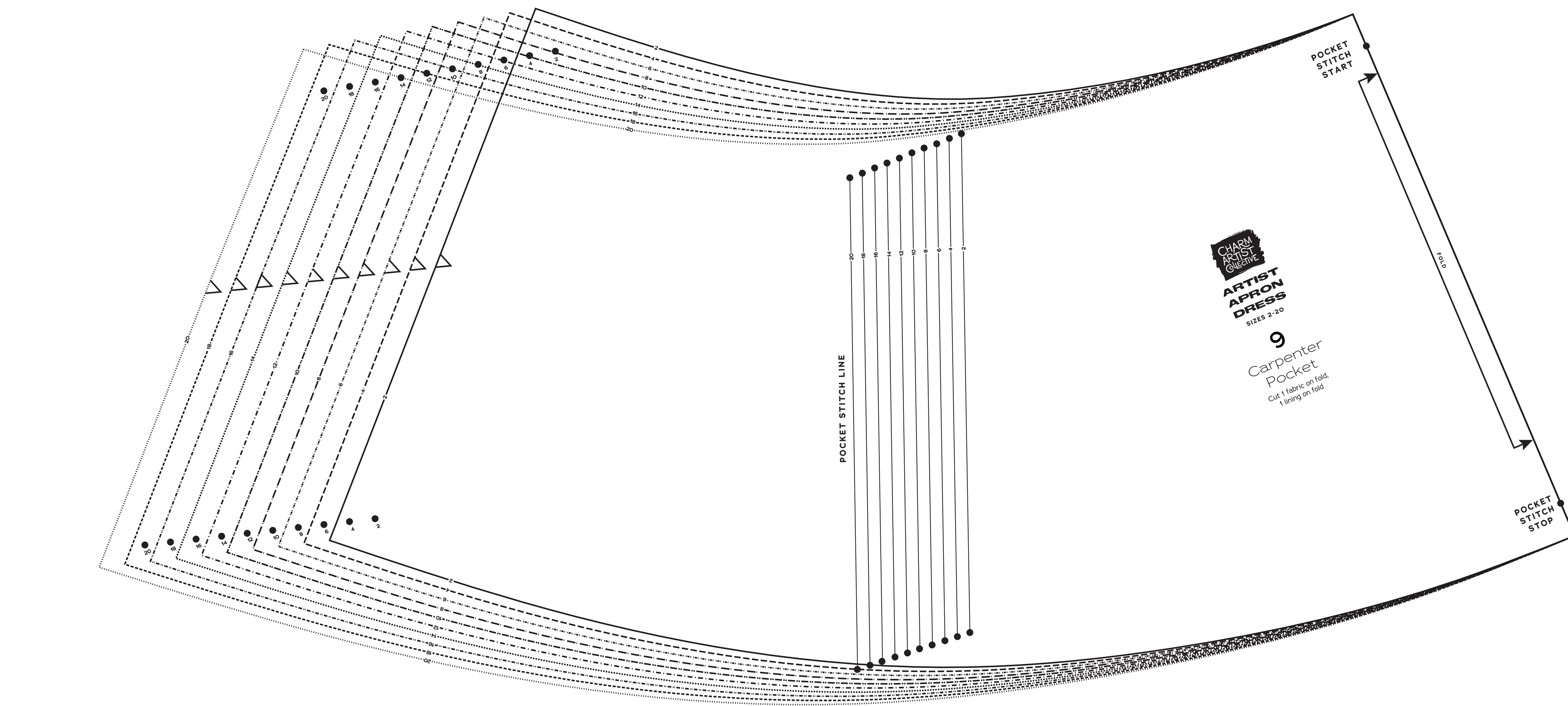
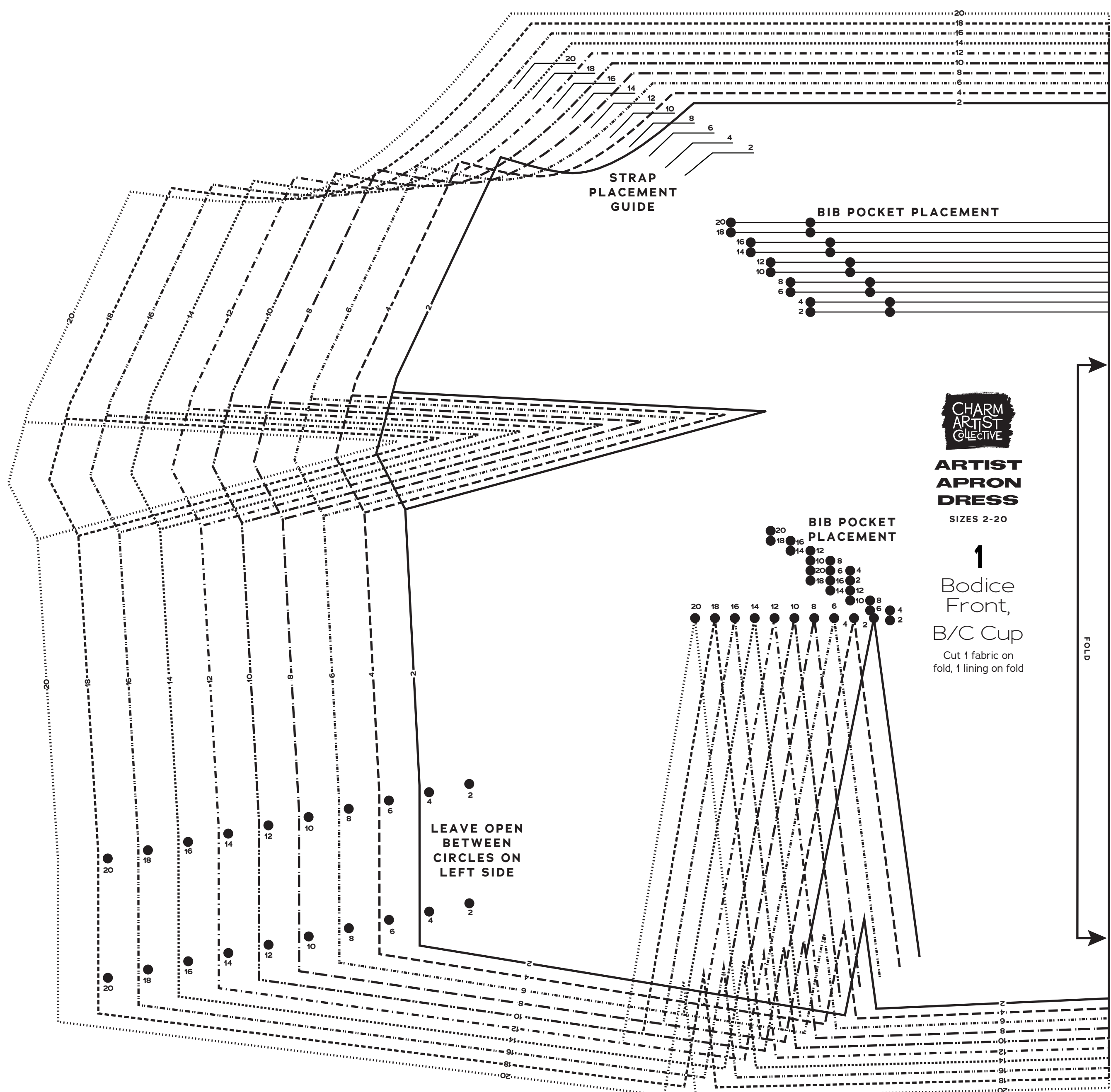
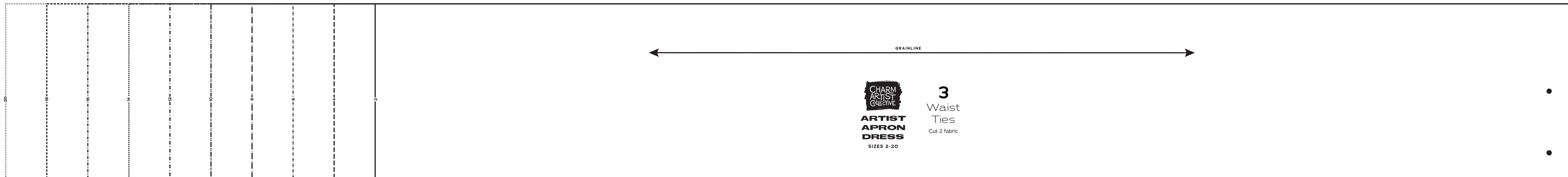
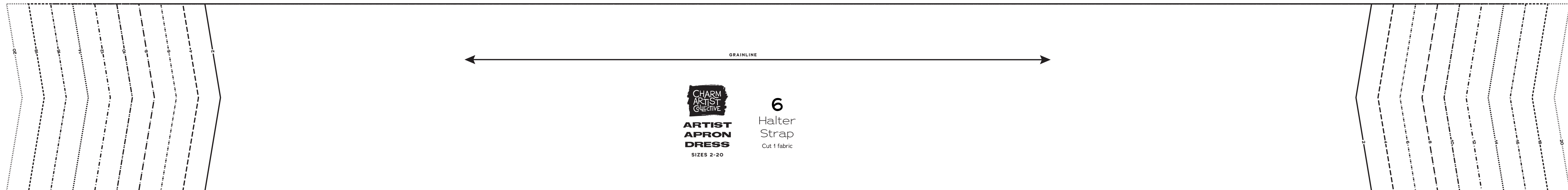
PAGE 1 OF 4

**PATTERN PIECE INDEX**

1	Bodice Front B/C Cup
3	Waist Ties
4	Skirt Front
6	Halter Strap
8	Bib Pocket
9	Carpenter Pocket

**SYMBOL KEY**

grainline arrow  
 match point/  
 placement mark  
 1" test square





**CHARM ARTIST COLLECTIVE** **ARTIST APRON DRESS**

Sizes 2-20  
with cup sizes A-H

5/8 inch (1.5 cm) seam allowances are included on all pattern pieces.

PAGE 2 OF 4

**PATTERN PIECE INDEX**

2	Bodice Back
4	Skirt Front
7	Shoulder Straps

**SIZES 2-20**

**PATTERN SIZE KEY**

2	----
4	-----
6	-----
8	-----
10	-----
12	-----
14	-----
16	-----
18	-----
20	-----

**SYMBOL KEY**

- grainline arrow
- match point/ placement mark
- 1" test square

A FOLD BACK THIS MARGIN

**CHARM ARTIST COLLECTIVE** **ARTIST APRON DRESS**

SIZES 2-20

**4**  
Skirt Front

Cut 1 fabric on fold

POCKET STITCH START

POCKET STITCH STOP

FOLD

SHORT APRON CUTTING LINE

POCKET PLACEMENT LINE

WAIST TIE PLACEMENT

BUTTON PLACEMENT

**CHARM ARTIST COLLECTIVE** **ARTIST APRON DRESS**

SIZES 2-20

**2**  
Bodice Back

Cut 2 fabric, 2 (fold)

GRAINLINE

GRAINLINE

**CHARM ARTIST COLLECTIVE** **ARTIST APRON DRESS**

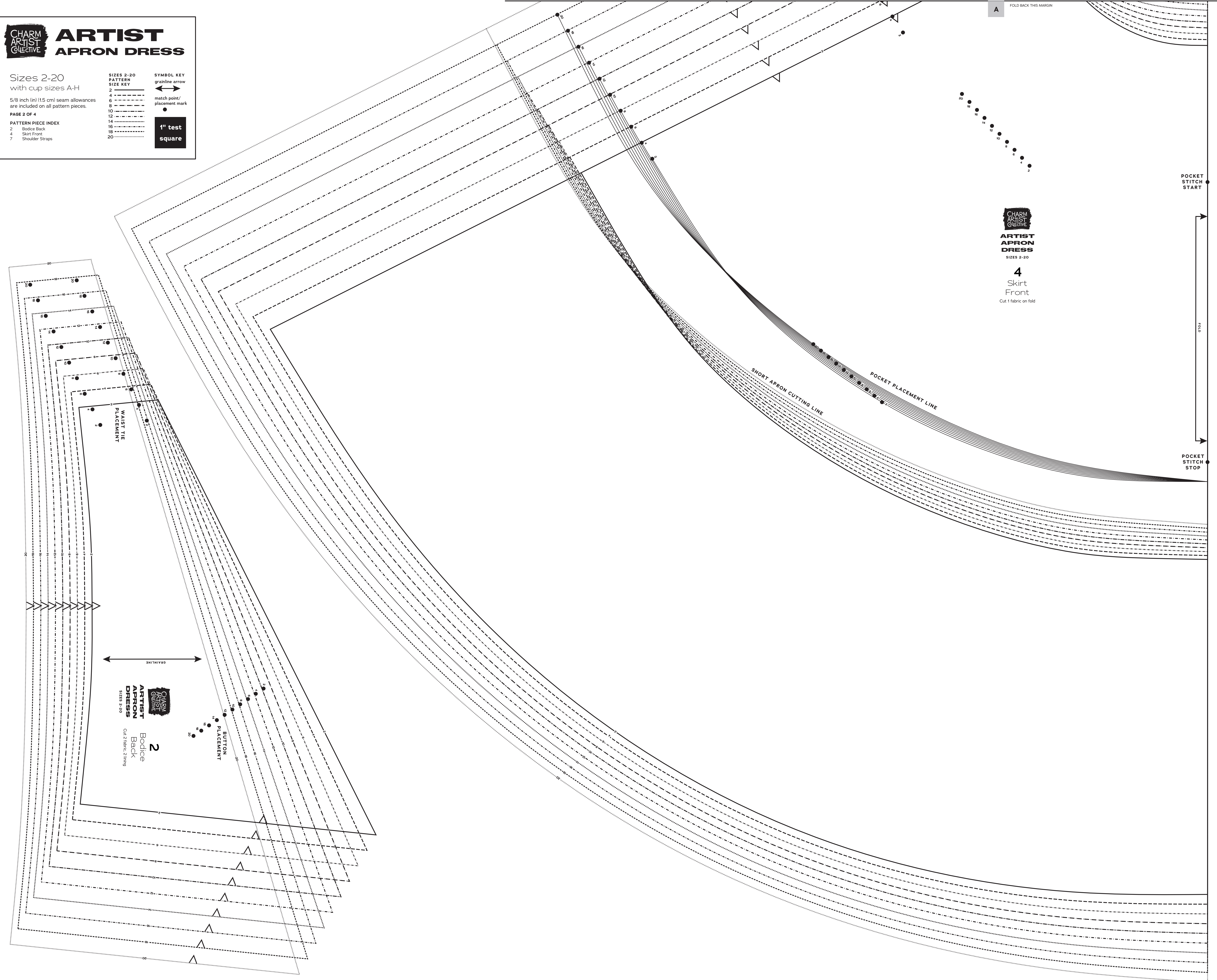
SIZES 2-20

**7**  
Shoulder Straps

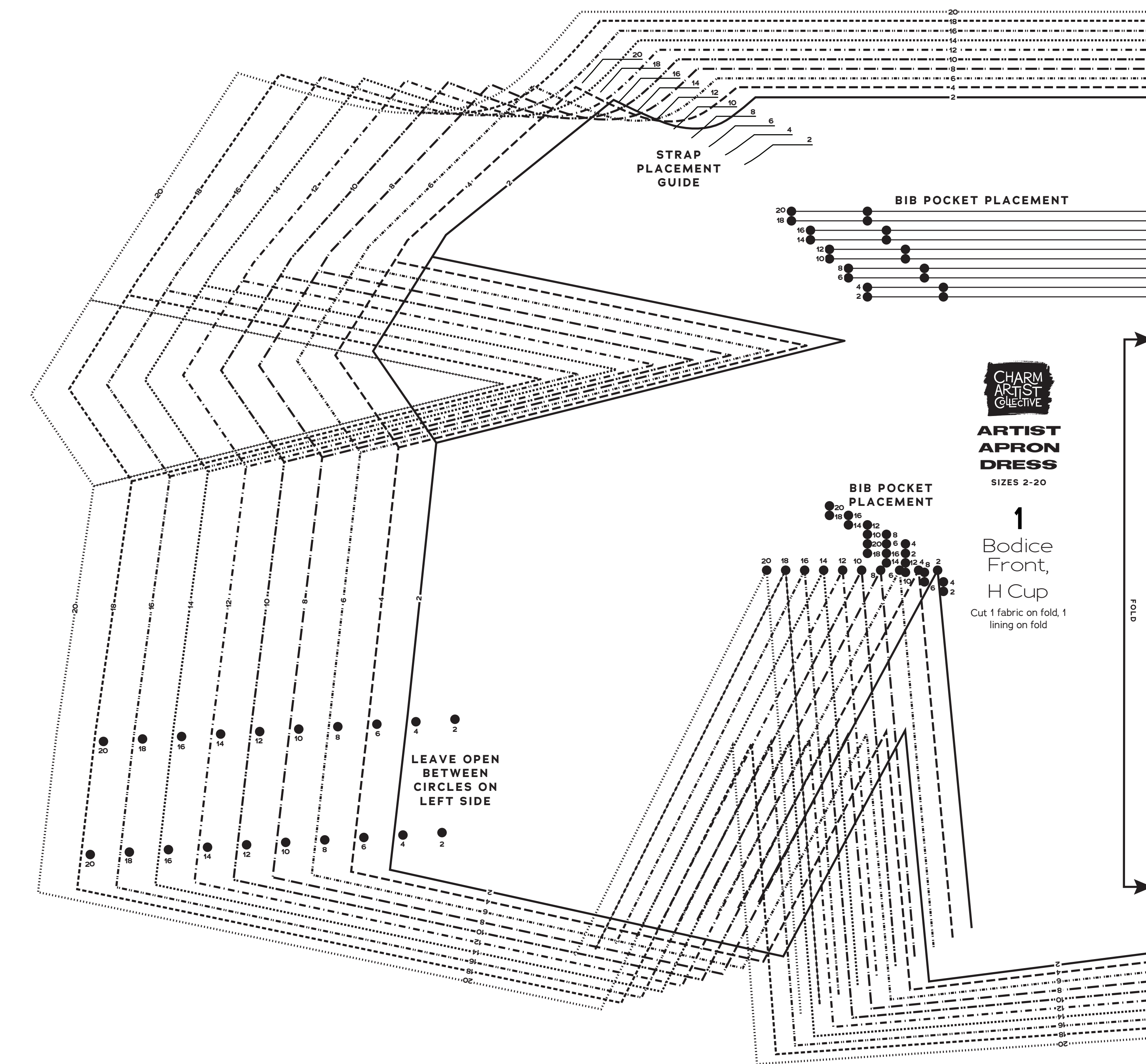
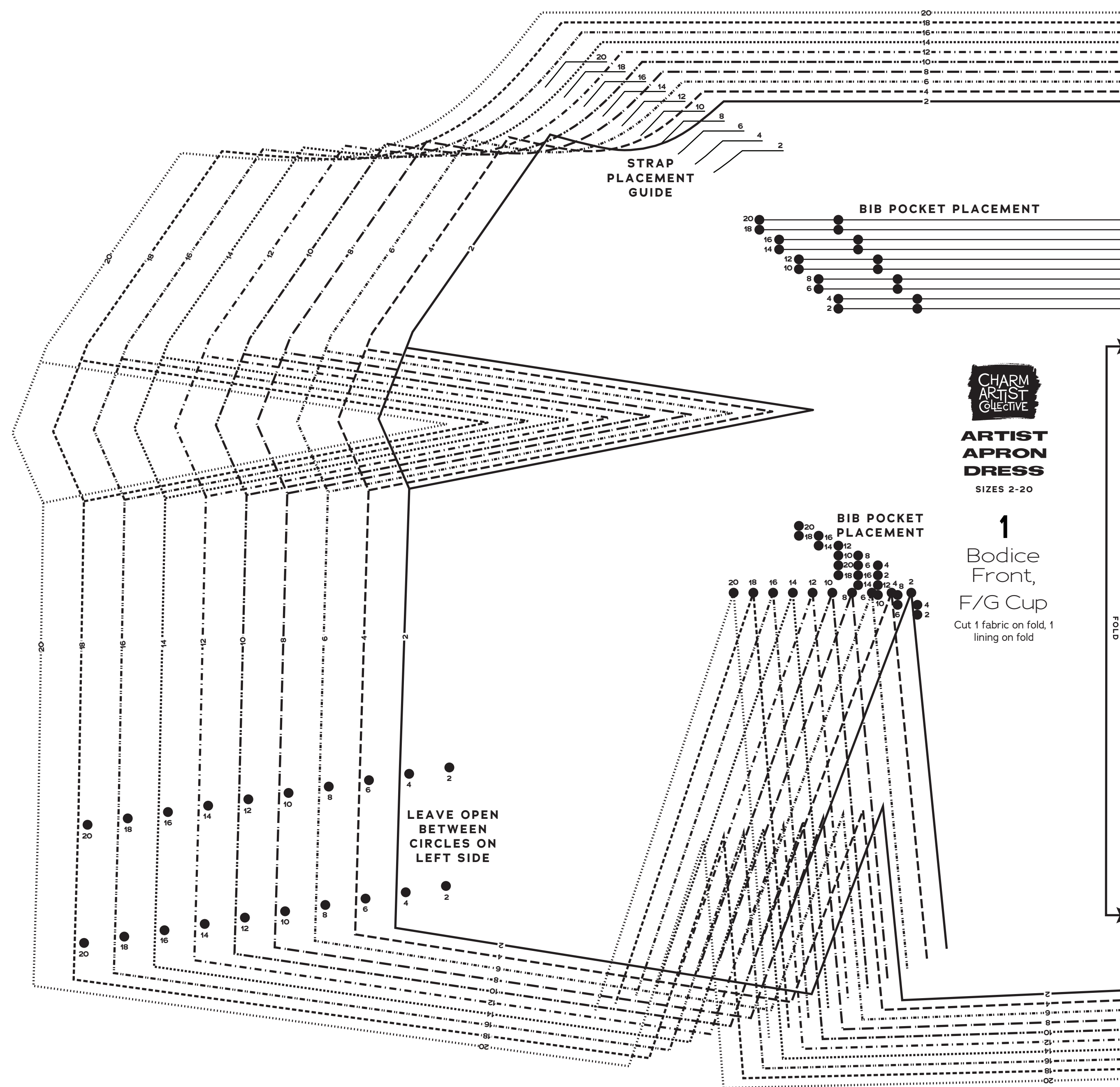
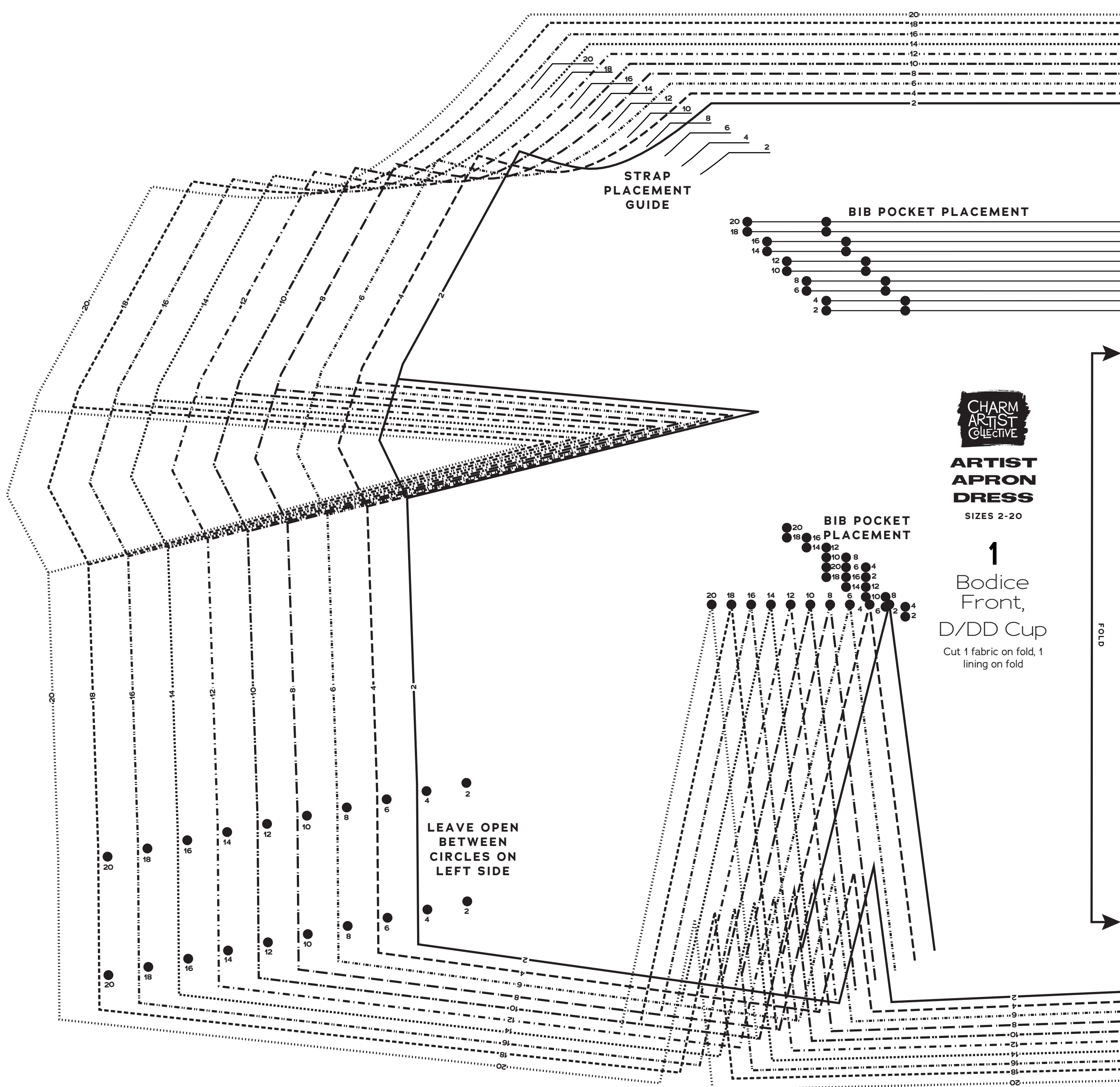
Cut 2 fabric

BUTTONHOLE

2  
4  
6  
8  
10  
12  
14  
16  
18  
20







CHARM ARTIST COLLECTIVE

**ARTIST APRON DRESS**

Sizes 2-20  
with cup sizes A-H

5/8 inch (1.5 cm) seam allowances  
are included on all pattern pieces.

PAGE 3 OF 4

**PATTERN PIECE INDEX**

1	Bodice Front D/DD Cup
1	Bodice Front F/G Cup
1	Bodice Front H Cup
5	Skirt Back
10	Side Seam Pocket

**SIZES 2-20  
PATTERN  
SIZE KEY**

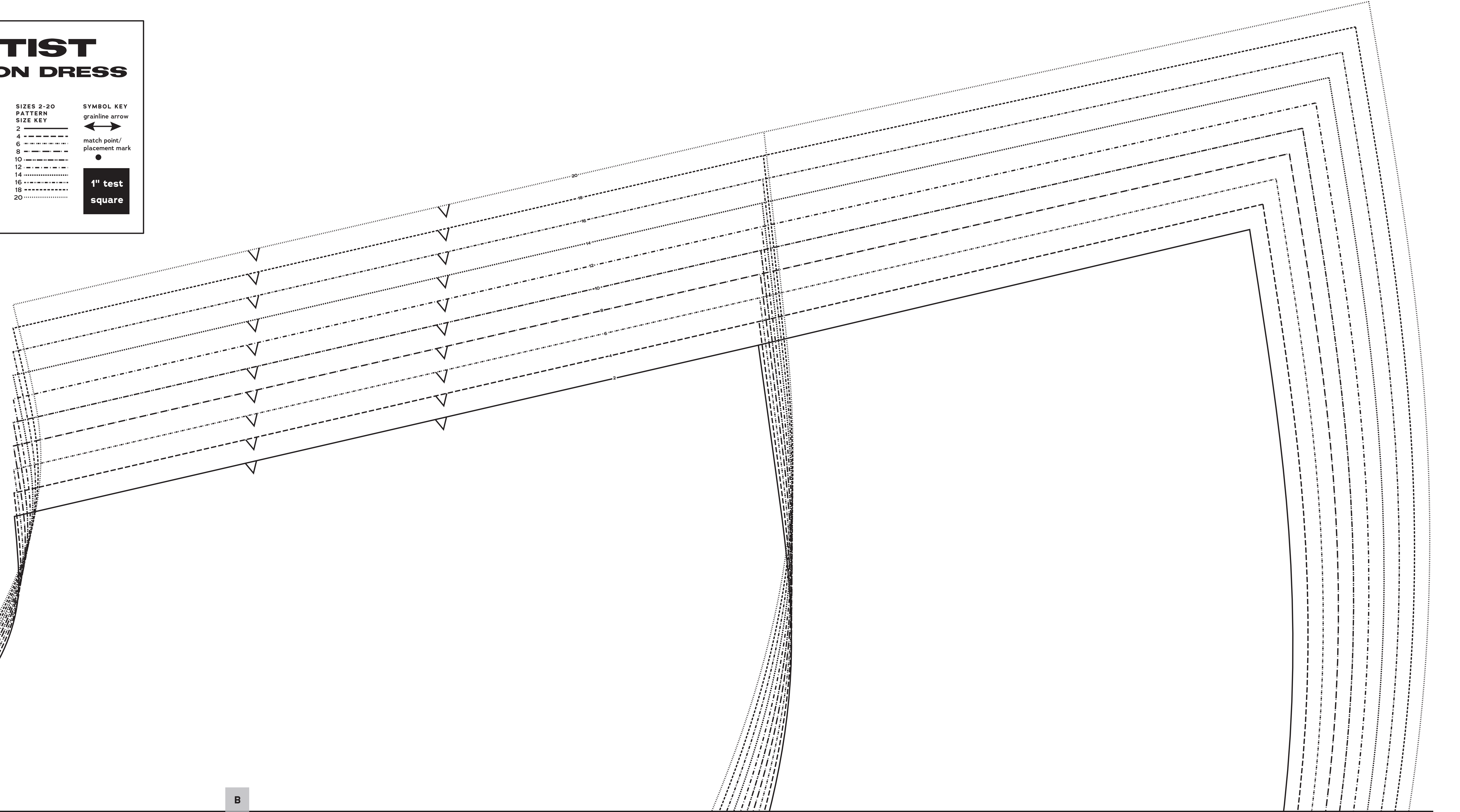
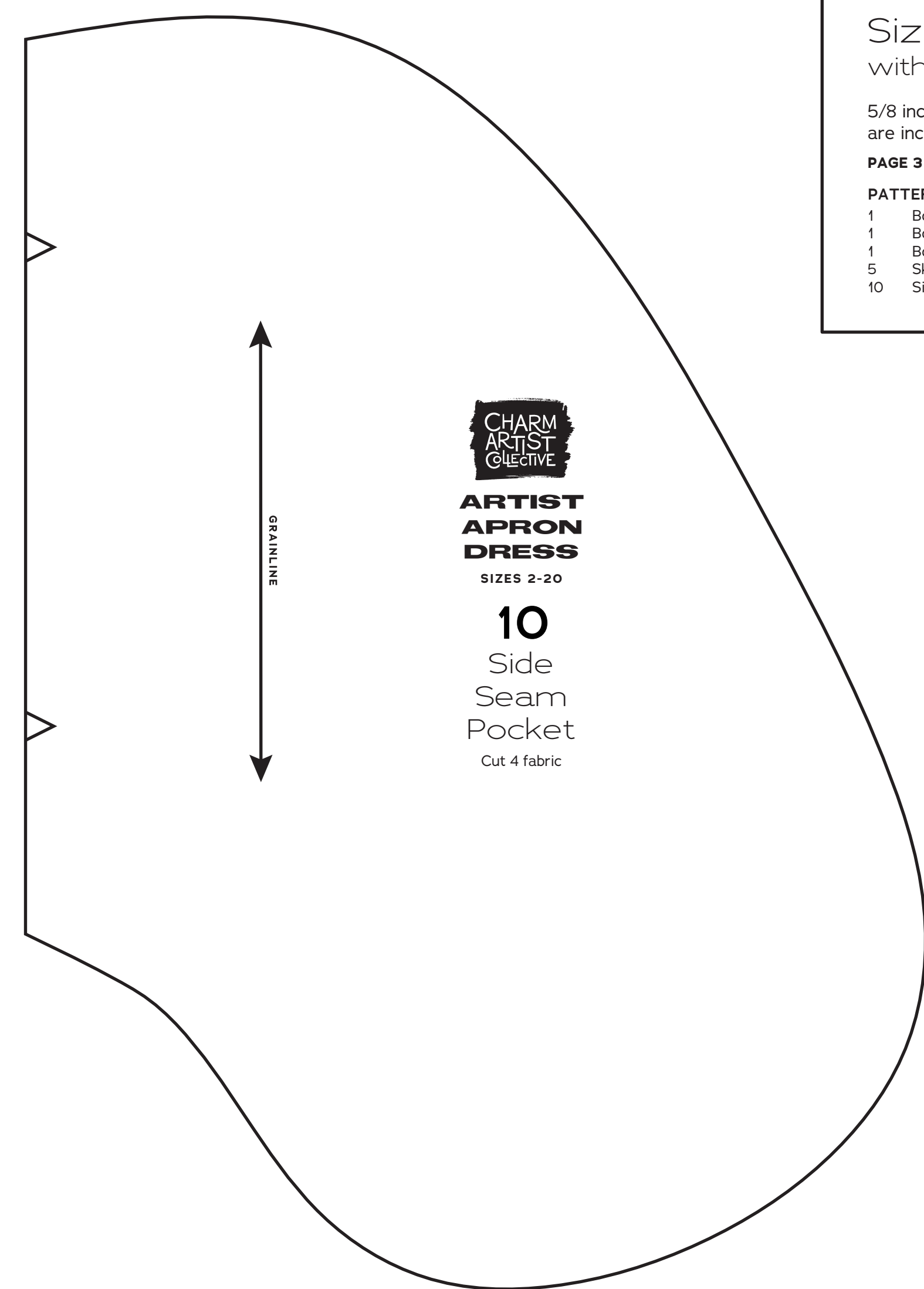
2	Grainline arrow
4	Match point/ placement mark
6	Match point/ placement mark
8	Match point/ placement mark
10	Match point/ placement mark
12	Match point/ placement mark
14	Match point/ placement mark
16	Match point/ placement mark
18	Match point/ placement mark
20	Match point/ placement mark

**SYMBOL KEY**

grainline arrow

match point/  
placement mark

1" test  
square





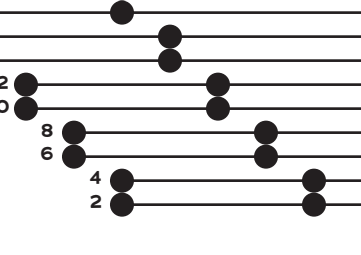
CHARM ARTIST GUESSIVE  
ARTIST APRON DRESS  
SIZES 2-20  
5 Skirt Back  
Cut 2 fabric

GRAINLINE

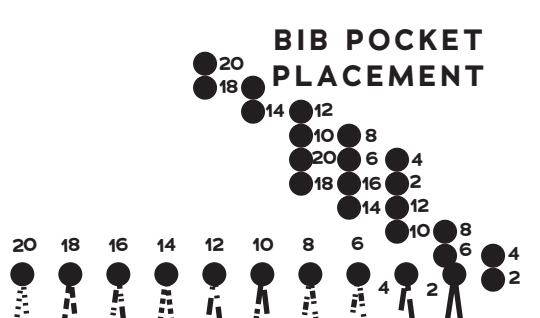
SHORT APRON CUTTING LINE

STRAP PLACEMENT GUIDE

BIB POCKET PLACEMENT



BIB POCKET PLACEMENT



CHARM ARTIST GUESSIVE  
ARTIST APRON DRESS  
SIZES 2-20  
1 Bodice Front, A Cup  
Cut 1 fabric on fold, 1 lining on fold

LEAVE OPEN BETWEEN CIRCLES ON LEFT SIDE

**CHARM ARTIST GUESSIVE** **ARTIST APRON DRESS**

Sizes 2-20 with cup sizes A-H

5/8 inch (1.5 cm) seam allowances are included on all pattern pieces.

PAGE 4 OF 4

**PATTERN PIECE INDEX**

1	Bodice Front A Cup
5	Skirt Back

**SIZES 2-20 PATTERN SIZE KEY**

2	-----
4	-----
6	-----
8	-----
10	-----
12	-----
14	-----
16	-----
18	-----
20	-----

**SYMBOL KEY**

grainline arrow

match point/ placement mark

1" test square

FOLD