



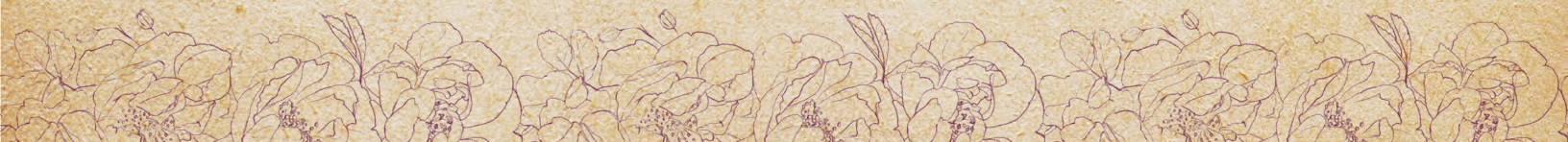
**MIX & MATCH**

with the Skipper skirt and bodysuit!

# Francie TOP

**A PATREON  
EXCLUSIVE  
PATTERN**

© 2023 Charm Patterns by Gertie







Could anything be cozier? This gorgeous (and ultra comfortable) batwing knit top has a rolled funnel neck and two sleeve lengths to keep you warm all season long.

Named after Barbie's mod cousin from the UK, the Francie Top is fully interchangeable with any of our Barbie-series bodices, which means you can use the Skipper Skirt to make the perfect winter-weather dress as well!

Who knows? There might even be more mix-and-matchable options coming soon. *(Wink-wink!)*

*xoxo, Gertie*

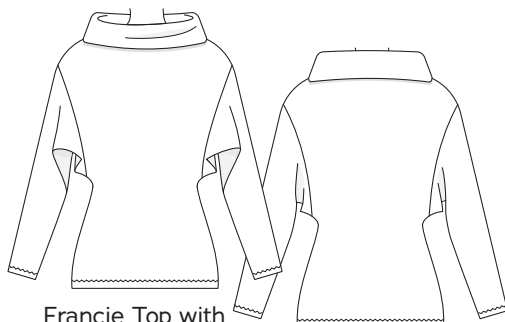


### Key Details

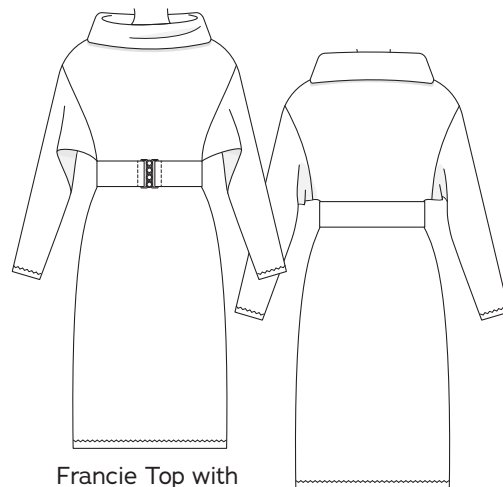
- Rolled funnel neckline
- Batwing sleeves
- Two sleeve lengths



Francie Top with 3/4-length sleeves



Francie Top with long sleeves



Francie Top with Skipper Dress bottom

This pattern can be combined with any of the Barbie series bottoms to create a dress or bodysuit. See more ideas on page 10.

## SIZE CHART

The Francie Top is sized in women's US 2–20 and 18–34, A–H cup sizes. Please use the chart below to pick your size. The High Bust measurement should be taken above your breasts and the Full Bust measurement should be taken at the fullest part of your bustline. Take the Waist measurement at the smallest part of your torso and the Hip measurement at the widest part of your hips. Note that it is best to choose your size by your bust measurements (and add or remove from the side seams at the waist if needed).



The cup sizing on this design is a little different than our other patterns. Because knits have a very forgiving fit, we have grouped more cup sizes together than usual: A–DD and F–H.

Not sure which size range to choose? Read more about our [two size ranges here!](#)

SIZES 2-20	2	4	6	8	10	12	14	16	18	20
High Bust	29 in 73.7 cm	31 in 78.7 cm	33 in 83.8 cm	35 in 88.9 cm	37 in 94 cm	39 in 99 cm	41 in 104.1 cm	43 in 109.2 cm	45 in 114.3 cm	47 in 119.4 cm
Bust A cup	30.5 in 77.5 cm	32.5 in 82.5 cm	34.5 in 87.6 cm	36.5 in 92.7 cm	38.5 in 97.8 cm	40.5 in 102.9 cm	42.5 in 108 cm	44.5 in 113 cm	46.5 in 118.1 cm	48.5 in 123.2 cm
Bust B/C cup	31 in 78.7 cm	33 in 83.8 cm	35 in 88.9 cm	37 in 94 cm	39 in 99 cm	41 in 104.1 cm	43 in 109.2 cm	45 in 114.3 cm	47 in 119.4 cm	49 in 124.5 cm
Bust D/DD cup	32 in 81.3 cm	34 in 86.4 cm	36 in 91.4 cm	38 in 96.5 cm	40 in 101.6 cm	42 in 106.7 cm	44 in 111.8 cm	46 in 116.8 cm	48 in 121.9 cm	50 in 127 cm
Bust F/G cup	33 in 83.8 cm	35 in 88.9 cm	37 in 94 cm	39 in 99 cm	41 in 104.1 cm	43 in 109.2 cm	45 in 114.3 cm	47 in 119.4 cm	49 in 124.5 cm	51 in 129.5 cm
Bust H cup	34 in 86.4 cm	36 in 91.4 cm	38 in 96.5 cm	40 in 101.6 cm	42 in 106.7 cm	44 in 111.8 cm	46 in 116.8 cm	48 in 121.9 cm	50 in 127 cm	52 in 132.1 cm
Waist	24 in 61 cm	26 in 66 cm	28 in 71.1 cm	30 in 76.2 cm	32 in 81.3 cm	34 in 86.4 cm	36 in 91.4 cm	38 in 96.5 cm	40 in 101.6 cm	42 in 106.7 cm
Hips	36 in 91.4 cm	38 in 96.5 cm	40 in 101.6 cm	42 in 106.7 cm	44 in 111.8 cm	46 in 116.8 cm	48 in 121.9 cm	50 in 127 cm	52 in 132.1 cm	54 in 137.2 cm

SIZES 18-34	18	20	22	24	26	28	30	32	34
High Bust	39.5 in 100.3 cm	41.5 in 105.4 cm	43.5 in 110.5 cm	45.5 in 115.6 cm	47.5 in 120.7 cm	49.5 in 125.7 cm	51.5 in 130.8 cm	53.5 in 135.9 cm	55.5 in 141 cm
Bust A/B cup	42.5 in 108 cm	44.5 in 113 cm	46.5 in 118.1 cm	48.5 in 123.2 cm	50.5 in 128.3 cm	52.5 in 133.4 cm	54.5 in 138.4 cm	56.5 in 143.5 cm	58.5 in 148.6 cm
Bust C cup	43 in 109.2 cm	45 in 114.3 cm	47 in 119.4 cm	49 in 124.5 cm	51 in 129.5 cm	53 in 134.6 cm	55 in 139.7 cm	57 in 144.8 cm	59 in 149.9 cm
Bust D/DD cup	44 in 111.8 cm	46 in 116.8 cm	48 in 121.9 cm	50 in 127 cm	52 in 132.1 cm	54 in 137.2 cm	56 in 142.2 cm	58 in 147.3 cm	60 in 152.4 cm
Bust F/G cup	45 in 114.3 cm	47 in 119.4 cm	49 in 124.5 cm	51 in 129.5 cm	53 in 134.6 cm	55 in 139.7 cm	57 in 144.8 cm	59 in 149.9 cm	61 in 154.9 cm
Bust H cup	46 in 116.8 cm	48 in 121.9 cm	50 in 127 cm	52 in 132.1 cm	54 in 137.2 cm	56 in 142.2 cm	58 in 147.3 cm	60 in 152.4 cm	62 in 157.5 cm
Waist	40 in 101.6 cm	42 in 106.7 cm	44 in 111.8 cm	46 in 116.8 cm	48 in 121.9 cm	50 in 127 cm	52 in 132.1 cm	54 in 137.2 cm	56 in 142.2 cm
Hips	48 in 121.9 cm	50 in 127 cm	52 in 132.1 cm	54 in 137.2 cm	56 in 142.2 cm	58 in 147.3 cm	60 in 152.4 cm	62 in 157.5 cm	64 in 162.6 cm

## Fabric Notes

We recommend light- to medium-weight knit fabrics: look for fabrics with around 50% stretch (you should be able to stretch 4 in of fabric to 6 in). We recommend a 95% cotton/5% spandex blend, rib knits, stretch velvet, and jersey. You can also use a stable knit like cotton interlock, French terry, sweatshirt fleece, or ponte for this design, but you will need to size up since those fabrics generally have less stretch. Size down if you are using fabric with more stretch than recommended.

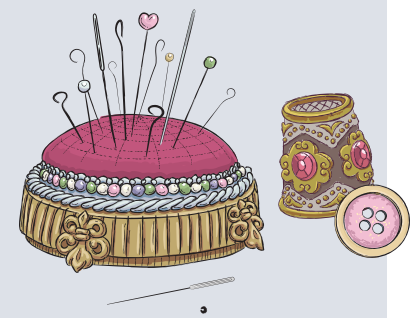
## Materials & Notions

- Fabric for the top
- Thread to match
- Lightweight fusible interfacing (look for knit or tricot types)
- Stretch/jersey sewing machine needle

## Resources

Here is a link for the fabric I used for the samples and in the video tutorial. There are lots of places to purchase fabric, so this is solely a guide you can use as a reference:

[Cotton Lycra Jersey](#)



## FIT NOTES

The Francie Top is a pullover batwing top made in a knit fabric. It has a comfortable fit and is meant to be worn with positive ease through the bust and waist.

The pattern is designed to fit with between 8¼ to 12 inches (in) (21 to 30.5 cm) of ease in the bust and 2½ to 3½ in (6.4 to 7.6 cm) of ease at the waist. See the charts to the right for finished garment measurements.

## Finished Measurements

Sizes 2-20	2	4	6	8	10	12	14	16	18	20
Bust A-D/DD	41 in 104.1 cm	43 in 109.2 cm	45 in 114.3 cm	47 in 119.4 cm	49 in 124.5 cm	51 in 129.5 cm	53 in 134.6 cm	55 in 139.7 cm	57 in 144.8 cm	59 in 149.9 cm
Bust F-H	42.25 in 107.3 cm	44.25 in 112.4 cm	46.25 in 117.5 cm	48.25 in 122.6 cm	50.25 in 127.6 cm	52.25 in 132.7 cm	54.25 in 137.8 cm	56.25 in 142.9 cm	58.25 in 148 cm	60.25 in 153 cm
A-D/DD Waist	26.5 in 67.3 cm	28.5 in 72.4 cm	30.5 in 77.5 cm	32.5 in 82.6 cm	34.5 in 87.6 cm	36.5 in 92.7 cm	38.5 in 97.8 cm	40.5 in 102.9 cm	42.5 in 108 cm	44.5 in 113 cm
F-H Waist	27.5 in 69.9 cm	29.5 in 74.9 cm	31.5 in 80 cm	33.5 in 85.1 cm	35.5 in 90.2 cm	37.5 in 95.3 cm	39.5 in 100.3 cm	41.5 in 105.4 cm	43.5 in 110.5 cm	45.5 in 115.6 cm
A-D/DD Upper Hip (Hem)	31.25 in 79.4 cm	33.25 in 84.5 cm	35.25 in 89.5 cm	37.25 in 94.6 cm	39.25 in 99.7 cm	41.25 in 104.8 cm	43.25 in 109.9 cm	45.25 in 114.9 cm	47.25 in 120 cm	49.25 in 125.1 cm
F-H Upper Hip (Hem)	32.25 in 81.9 cm	34.25 in 87 cm	36.25 in 92.1 cm	38.25 in 97.2 cm	40.25 in 102.2 cm	42.25 in 107.3 cm	44.25 in 112.4 cm	46.25 in 117.5 cm	48.25 in 122.6 cm	50.25 in 127.6 cm
Bicep	18.75 in 47.3 cm	19.25 in 48.6 cm	19.75 in 49.8 cm	20.25 in 51.1 cm	20.75 in 52.4 cm	21.25 in 53.7 cm	21.75 in 54.9 cm	22.25 in 56.2 cm	22.75 in 57.5 cm	23.25 in 58.7 cm

Sizes 18-34	18	20	22	24	26	28	30	32	34
Bust A-D/DD	54.5 in 138.4 cm	56.5 in 143.5 cm	58.5 in 148.6 cm	60.5 in 153.7 cm	62.5 in 158.8 cm	64.5 in 163.8 cm	66.5 in 168.9 cm	68.5 in 174 cm	70.5 in 179.1 cm
Bust F-H	56.25 in 142.9 cm	58.25 in 148 cm	60.25 in 153 cm	62.25 in 158.1 cm	64.25 in 163.2 cm	66.25 in 168.3 cm	68.25 in 173.4 cm	70.25 in 178.4 cm	72.25 in 183.5 cm
A-D/DD Waist	42.5 in 108 cm	44.5 in 113 cm	46.5 in 118.1 cm	48.5 in 123.2 cm	50.5 in 128.3 cm	52.5 in 133.4 cm	54.5 in 138.4 cm	56.5 in 143.5 cm	58.5 in 148.6 cm
F-H Waist	42.5 in 108 cm	44.5 in 113 cm	46.5 in 118.1 cm	48.5 in 123.2 cm	50.5 in 128.3 cm	52.5 in 133.4 cm	54.5 in 138.4 cm	56.5 in 143.5 cm	58.5 in 148.6 cm
A-D/DD Upper Hip (Hem)	44 in 111.8 cm	46 in 116.8 cm	48 in 121.9 cm	50 in 127 cm	52 in 132.1 cm	54 in 137.2 cm	56 in 142.2 cm	58 in 147.3 cm	60 in 152.4 cm
F-H Upper Hip (Hem)	44.25 in 112.4 cm	46.25 in 117.5 cm	48.25 in 122.6 cm	50.25 in 127.6 cm	52.25 in 132.7 cm	54.25 in 137.8 cm	56.25 in 142.9 cm	58.25 in 148 cm	60.25 in 153 cm
Bicep	21.5 in 54.6 cm	22.25 in 56.2 cm	22.75 in 57.8 cm	23.5 in 59.4 cm	24 in 61 cm	24.75 in 62.5 cm	25.25 in 64.1 cm	26 in 65.7 cm	26.5 in 67.3 cm

## REQUIRED YARDAGE & CUTTING LAYOUTS

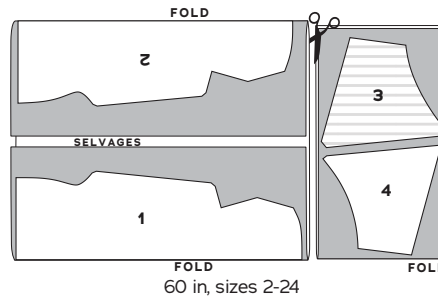
### NOTES:

- Be sure to note whether the pieces are cut on a **double or single layer** of fabric. For a double layer, there will be a note indicating **FOLD** on the layout.

- All pattern pieces are shown in a “without nap” layout. You may need additional yardage for directional prints, stripes, plaids, and other prints that need to be matched across seamlines.

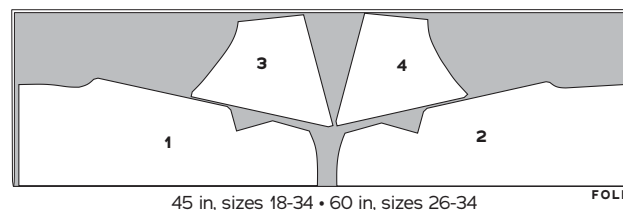
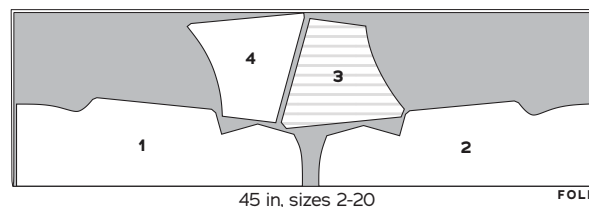
### Three-Quarter Sleeve Top, Fabric (1, 2, 3, 4; at sleeve cut line)

	Sizes 2-10	Sizes 12-20	Sizes 18-24	Sizes 26-34
45 in	2½ yds 1.9 m	2¾ yds 2.4 m	2¼ yds 2.1 m	2¾ yds 2.2 m
60 in	1½ yds 1.5 m	1¾ yds 1.6 m	1¾ yds 1.6 m	2¾ yds 2.2 m



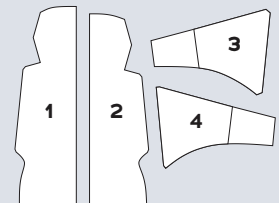
### KEY TO LAYOUTS

- Right side of pattern piece
- Wrong side of pattern piece



## Pattern Pieces

- Top Front**  
Cut 1 fabric on fold
- Top Back**  
Cut 1 fabric on fold
- Sleeve Front**  
Cut 2 fabric
- Sleeve Back**  
Cut 2 fabric
- Neckline Interfacing Front**  
Cut 1 interfacing on fold
- Neckline Interfacing Back**  
Cut 1 interfacing on fold



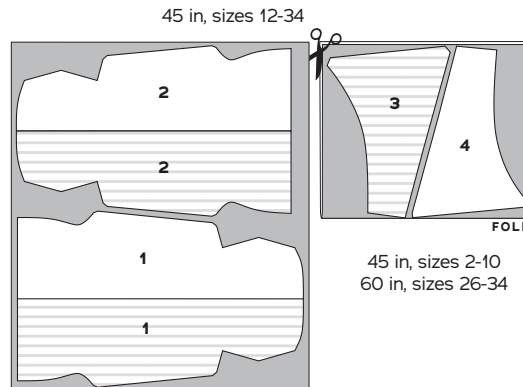
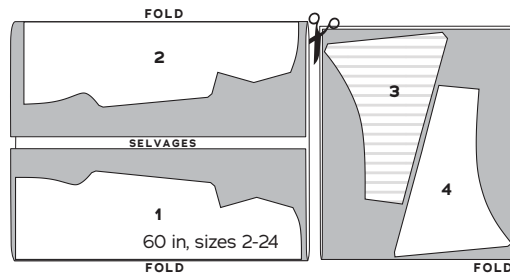
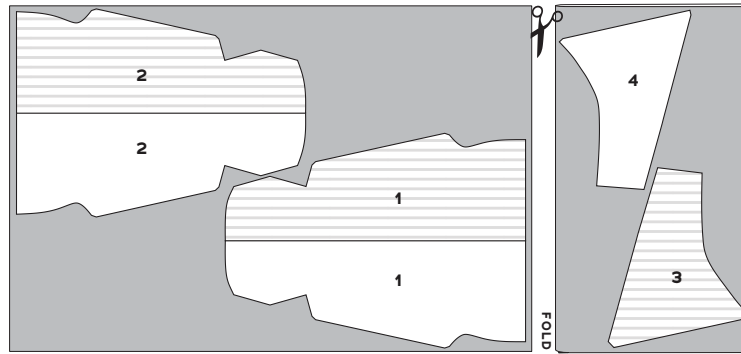


# REQUIRED YARDAGE & CUTTING LAYOUTS

## Long Sleeve Top, Fabric

(1, 2, 3, 4)

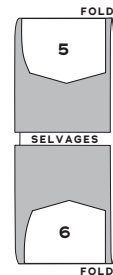
	Sizes 2-10	Sizes 12-20	Sizes 18-24	Sizes 26-34
45 in	1 <sup>7</sup> / <sub>8</sub> yds 1.7 m	3 <sup>1</sup> / <sub>8</sub> yds 2.8 m	2 <sup>5</sup> / <sub>8</sub> yds 2.4 m	3 <sup>1</sup> / <sub>8</sub> yds 2.8 m
60 in	1 <sup>3</sup> / <sub>4</sub> yds 1.6 m	2 yds 1.8 m	2 yds 1.8 m	2 <sup>1</sup> / <sub>4</sub> yds 2.1 m



## Interfacing

(5, 6)

All sizes	
60 in	3 <sup>1</sup> / <sub>8</sub> yd 0.4 m



## SEWING INSTRUCTIONS

### BEFORE SEWING

**Transferring marks:** Use dressmaker's tracing paper and a tracing wheel to transfer all pattern markings to the wrong side (WS) of your fabric. Mark pattern notches by snipping into the seam allowance with the tip of your scissors.

**Interfacing:** the funnel neckline needs to be stabilized with fusible interfacing prior to sewing. Follow the interfacing cutting instructions on the pattern pieces. Apply fusible interfacing to the WS of the fabric at the neck, using a press cloth and steam. Do not rub your iron back and forth; lift it up and press it down for several seconds at a time until interfacing is fully adhered.

**Seam Finishing:** if finishing seams with a serger, serge the following seam allowances (without trimming the edges) before construction. If you don't have a serger, consider using a zigzag or overlock stitch on your sewing machine. Knits typically do not fray, so

seam finishing is optional.

- Top side seam and neckline-to-shoulder seam
- Sleeve underarm and shoulder seams
- Top hem and sleeve hem

### NOTES

- 5/8-in (1.5 cm) seam allowances are included on all pattern pieces, except where otherwise noted.
- For the three-quarter sleeve version, cut the Sleeve (3) at the three-quarter length cutting line.
- The Francie Top pattern pieces include cutting lines for the Barbie Top neckline as an alternative to the rolled funnel collar. To sew, replace Step 4 (Sew



## MIX & MATCH

**THIS PATTERN IS PART OF THE BARBIE SERIES**

The Francie Top can be sewn as a bodice for any of the Barbie-series bottoms to create a dress or bodysuit without a waist seam. To do so, join the Francie Top to the Barbie-series bottom at the waistline, ignoring any seam allowance.

See the full list of mix and match options for this series at [Charm-Patterns.com/mix-and-match](https://Charm-Patterns.com/mix-and-match).

neckline) with the Neck Band section of the Barbie Top instructions.

## TIPS

- Use a stretch or jersey/ball point sewing machine needle to avoid skipped stitches.
- Use a narrow zigzag stitch (1.5 mm wide by 2.5 mm long) or twin needle on hems to provide some stretch. Use a slightly wider zigzag stitch on seams (2.5 mm wide by 2.5 mm long) and hold the fabric taut as you are sewing it (this will help retain stretch in the fabric).
- Press your stitching lines after every step, even when not specified in the instructions.

## TIPS FOR MATCHING STRIPES

- Due to the nature of the Francie Top design, precise pattern matching at all seams will be impossible. Pick the seamline that is most important to you; the sleeve shoulder seams and top side seams will be the most visible when worn.
- Cut your fabric with the right side (RS) of the fabric facing up, paying particular attention to the grainline and stripe pattern. You may wish to cut your pattern pieces on a single layer of fabric, one at a time, using the previously cut pieces to help lay out and match each additional piece.
- Before sewing, pin the pieces together carefully. Match the stripes at the sew line, not at the fabric raw edge.
- For extremely precise stripe matching, baste the seam with a long straight machine stitch after pinning. Double check that the stripes align perfectly at the seam line, then restitch with a zigzag stitch. Remove your basting thread.
- Test on a piece of scrap fabric first. If your fabric shifts as you are sewing (so frustrating!), reduce the presser foot pressure or use a walking foot.

## SEW THE TOP

*If you will be using the Francie Top as a bodice for a Barbie-series bottom, you must tape the individual pattern components together at the marked waistline, ignoring any waistline seam allowance (if applicable). To sew, follow the instructions for the Top, sewing the side seam to the hem.*

## Top

**1. Attach sleeves:** with RS together, pin Sleeve Front (3) to Top Front (1) along the sleeve seam, matching notches. Stitch. Trim seam allowances as one to about  $\frac{3}{8}$  in (1 cm), then finish seams as desired. If serging, trim and finish simultaneously. Press seam allowances towards the sleeve. Repeat to attach Sleeve Back (4) to Top Back (2).

**2. Sew shoulder seams:** pin top front unit to top back unit at shoulder seam, RS together, matching sleeve seams. Stitch from neckline raw edge to sleeve hem raw edge, pivoting where the neck meets the shoulder. Trim seam allowances as one to about  $\frac{3}{8}$  in (1 cm), then finish seams as desired. If serging, trim and finish simultaneously. Clip the seam allowance where the neck meets the shoulder and notch the seam allowance at the neck fold line. Press the sleeve seam allowances towards the back and neck seam allowances open, or press the seam allowance above and below the notch in opposing directions if serged as one.

**3. Sew side seams:** with RS together, pin top front unit to top back unit at underarm and side seam, RS together, matching notches and sleeve seams. Stitch from sleeve hem raw edge to top hem raw edge. Trim seam allowances as one to about  $\frac{3}{8}$  in (1 cm), then finish seams as desired. If serging, trim and finish simultaneously. Clip into the curve of the waist. Press seam allowances towards the back.

**4. Sew neckline:** with top WS out, fold the neck raw edge to the WS, matching circles. Pin the neckline raw edge to the top, WS together. Stitch the neckline along the raw edge to secure. Press flat and turn the top RS out.

**5. Hem garment:** fold and press the hem under  $\frac{5}{8}$  in (1.5 cm). Using a narrow zigzag stitch or twin needle, topstitch  $\frac{1}{2}$  in (1.3 cm) from fold. Press hem flat.

**6. Hem sleeves:** repeat the previous step for the sleeve hems.

*Enjoy your cozy new Francie Top!*



## PATTERN PIECE LOCATION GUIDE

Here is a list to help you locate the pattern pieces on the letter-size tiled pages and A0 pattern sheets.  
The tiled pieces and A0 sheets are included as separate pdf files as part of this digital pattern.

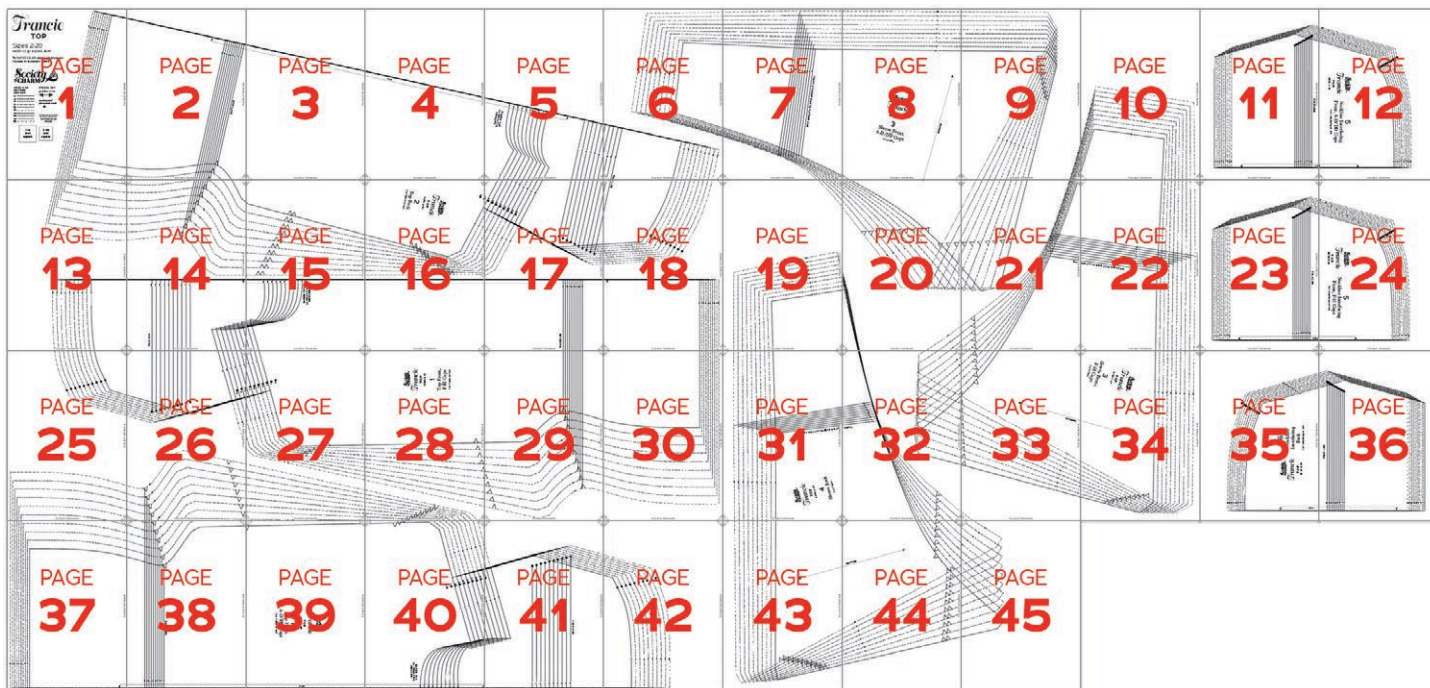
PC#	Piece Name	SIZES 2-20		SIZES 18-34	
		Tiled	A0	Tiled	A0
1	Top Front, A-D/DD Cups	25-28, 37-42	1	37-41, 47-52	1
1	Top Front, F-H Cups	13-18, 25-30	1	25-30, 38-42	1
2	Top Back	1-6, 13-18	3	2-6, 13-18	3
3	Sleeve Front, A-D/DD Cups	6-9, 19-21	2	7-10, 19-22	2
3	Sleeve Front, F-H Cups	9-10, 20-22, 32-34	2	20-22, 31-34, 45-46	2
4	Sleeve Back	19-20, 31-33, 43-45	2	43-46, 53-56	2
5	Neckline Interfacing Front, A-D/DD Cups	11-12	3	11-12	3
5	Neckline Interfacing Front, F-H Cups	23-24	3	23-24	3
6	Neckline Interfacing Back	35-36	3	35-36	3



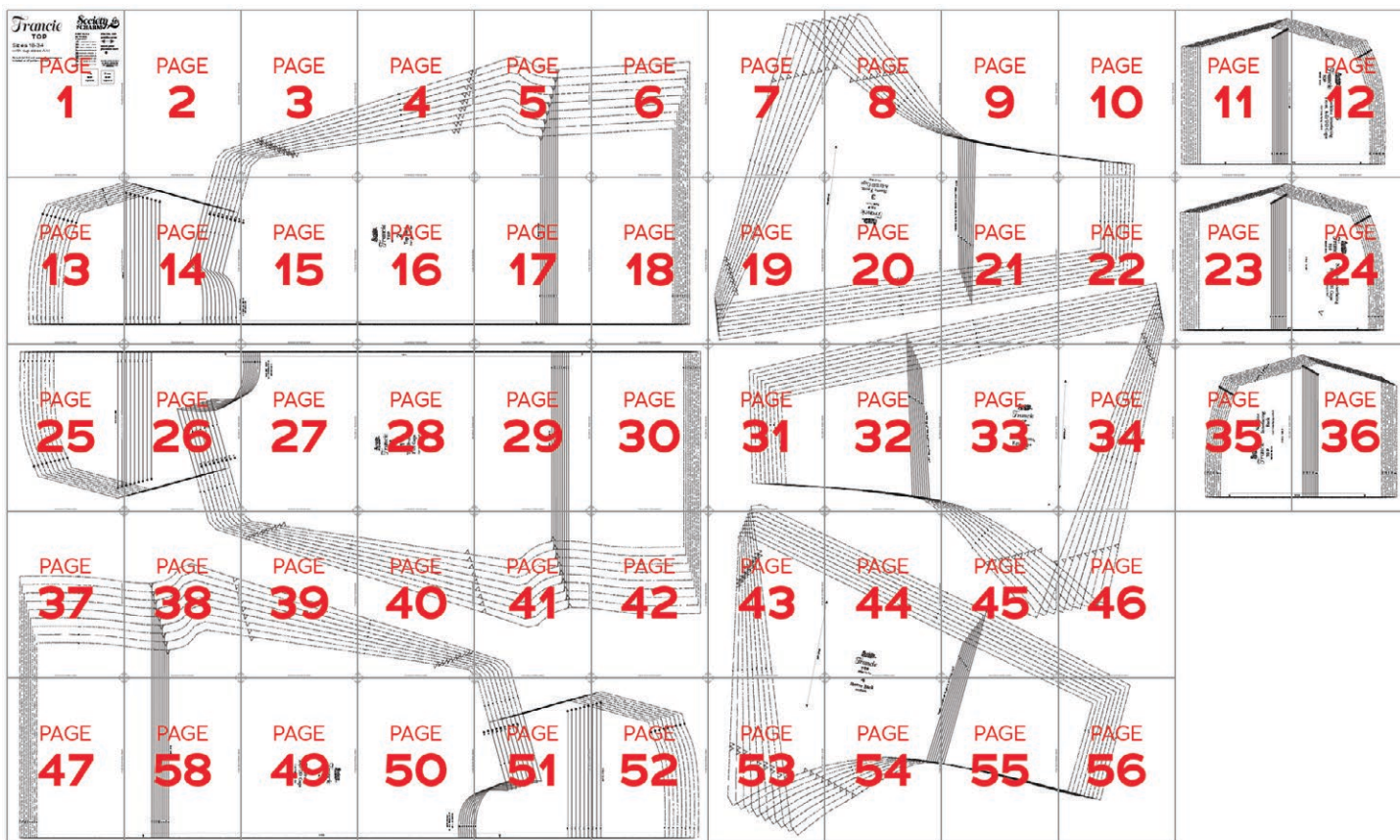


# TILING MAPS

Sizes 2-20



Sizes 18-34





## HOW TO USE THIS PATTERN

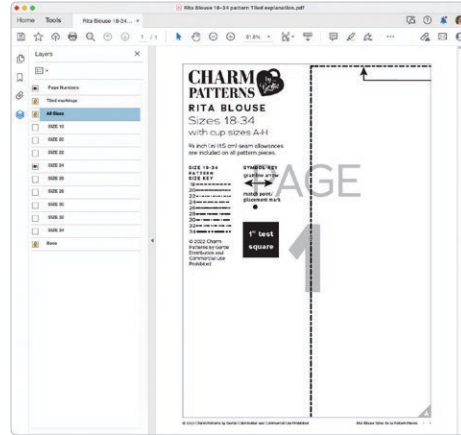
The pattern pieces are tiled so you can print them on Letter (8½" x 11") or A4 size paper. You can also send the A0 pattern sheet PDF to a local or online printer (like [ThePlottedPattern.com](http://ThePlottedPattern.com)) to print on large sheets (36" x 48" for U.S. or A0 for international).

This pattern includes size layers. To get the best results, open either the Tiled or A0 pattern pieces PDF in [Acrobat Reader](#).

Open the Layers Palette (View>Show/Hide>Navigation Panes>Layers) and hide all of the layer(s) except for the ones you want to print by clicking on the eye icon.

The All Sizes and Tiled Markings layers have general pattern information and will always print.

You may choose to turn off the Page Numbers layer. The page numbers will still appear at the bottom of each page in the footer.



## WORKING WITH THE TILED PIECES

Go to File>Print and change the page range to the pages you need for the pieces you've chosen (see Pattern Pieces Printing Index). Make sure the Page Sizing settings to 100% or Actual Size. Test this after printing by measuring the 1" test box on the first page of the pattern pieces.

Cut apart any pattern pieces that share a page, then fold back or cut off the page margins on each page as marked.

Match the letters in the gray corner diamonds. Tape the pages together, butting up the folded or cut page edges with the gray margin lines.

## MORE FROM GERTIE

[At CharmPatterns.com](http://CharmPatterns.com): Shop my sewing patterns and accessories.

[On YouTube](#): Learn beginner and advanced sewing skills and techniques through my tutorials and watch episodes of my Gertie's World series.

[On Instagram](#): Stay in the loop and get inspired.

[On Patreon](#): Access monthly patterns and tutorial videos.





# MIX & MATCH

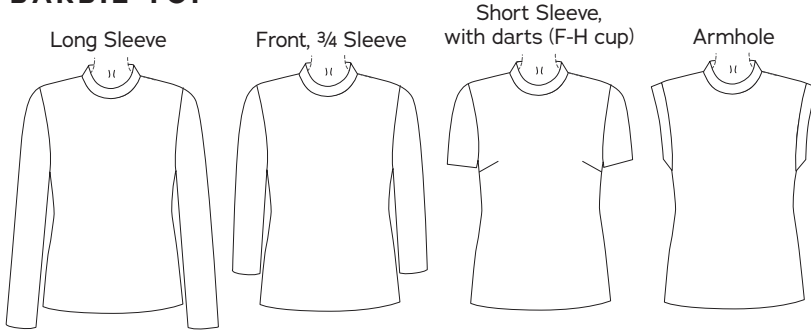
## THE BARBIE SERIES

The following patterns can be interchanged with the Francie Top.

[Find more at CharmPatterns.com/mix-and-match.](https://www.charmpatterns.com/mix-and-match)



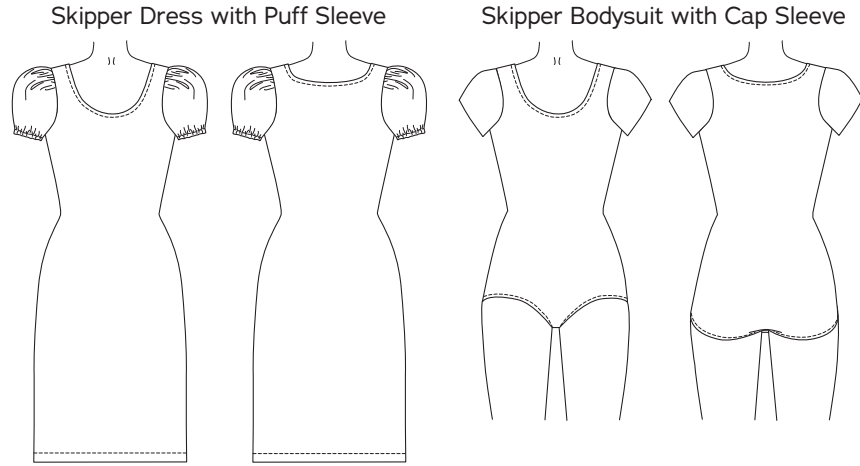
### BARBIE TOP



### PLUS: Barbie Turtleneck Expansion



### SKIPPER DRESS AND BODYSUIT



### MIX IT UP!

The patterns in this series interchange to make tons of options. Just mix and match the patterns at the waist-line to create bodysuits, dresses and tops with multiple sleeve and neckline options.

