



Skipper Dress and Bodysuit

Sizes 18-34
with cup sizes A-H

5/8 inch (1.5 cm) seam allowances are included on all pattern pieces.

Page 1 of 3

PAGE 1 PATTERN PIECES

- 2 Skirt Back
- 7 Puff Sleeve
- 8 Cap Sleeve

© 2024 Charm Patterns by Gertie
Distribution and Commercial Use Prohibited

PATTERN SIZE KEY

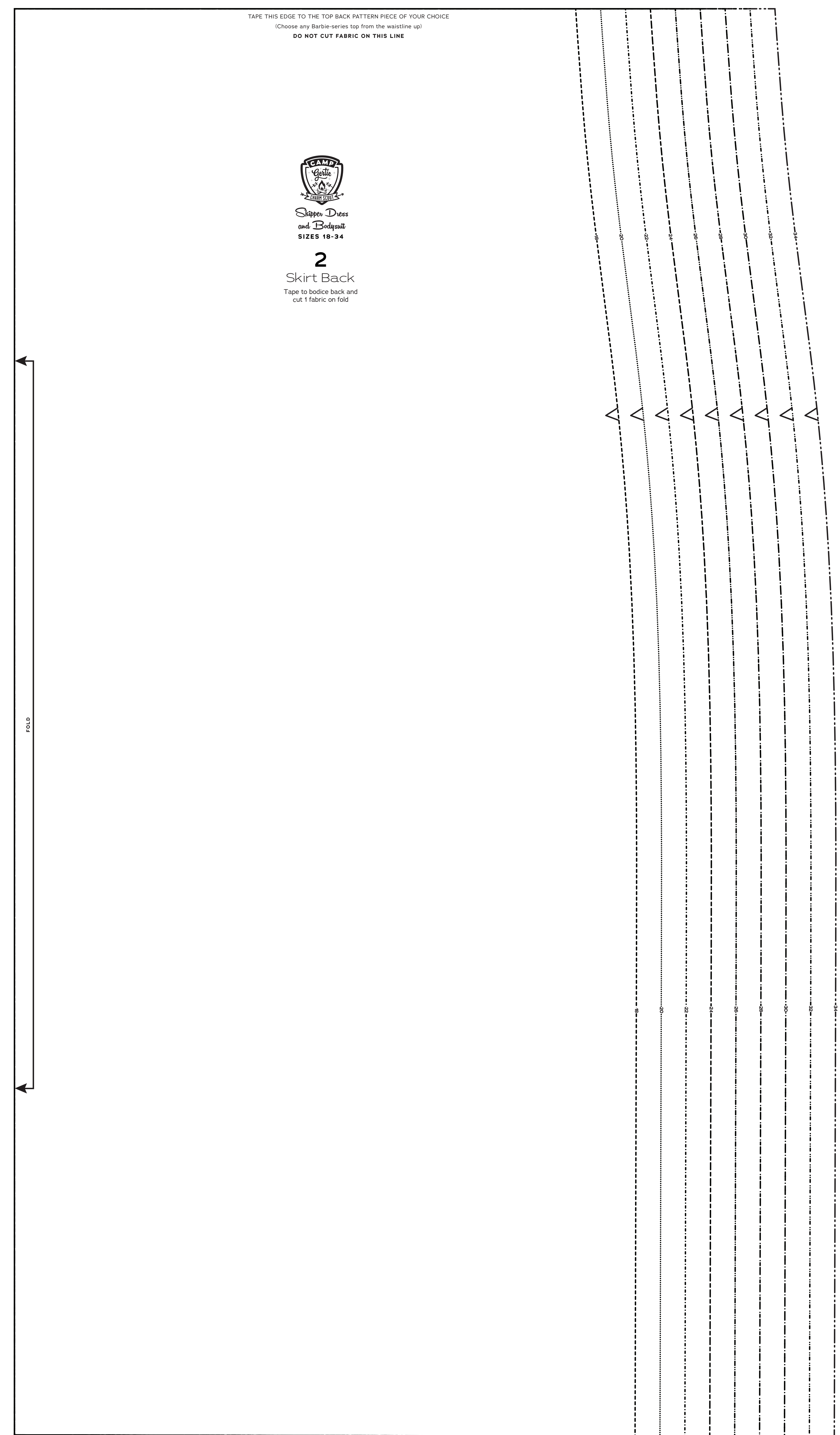
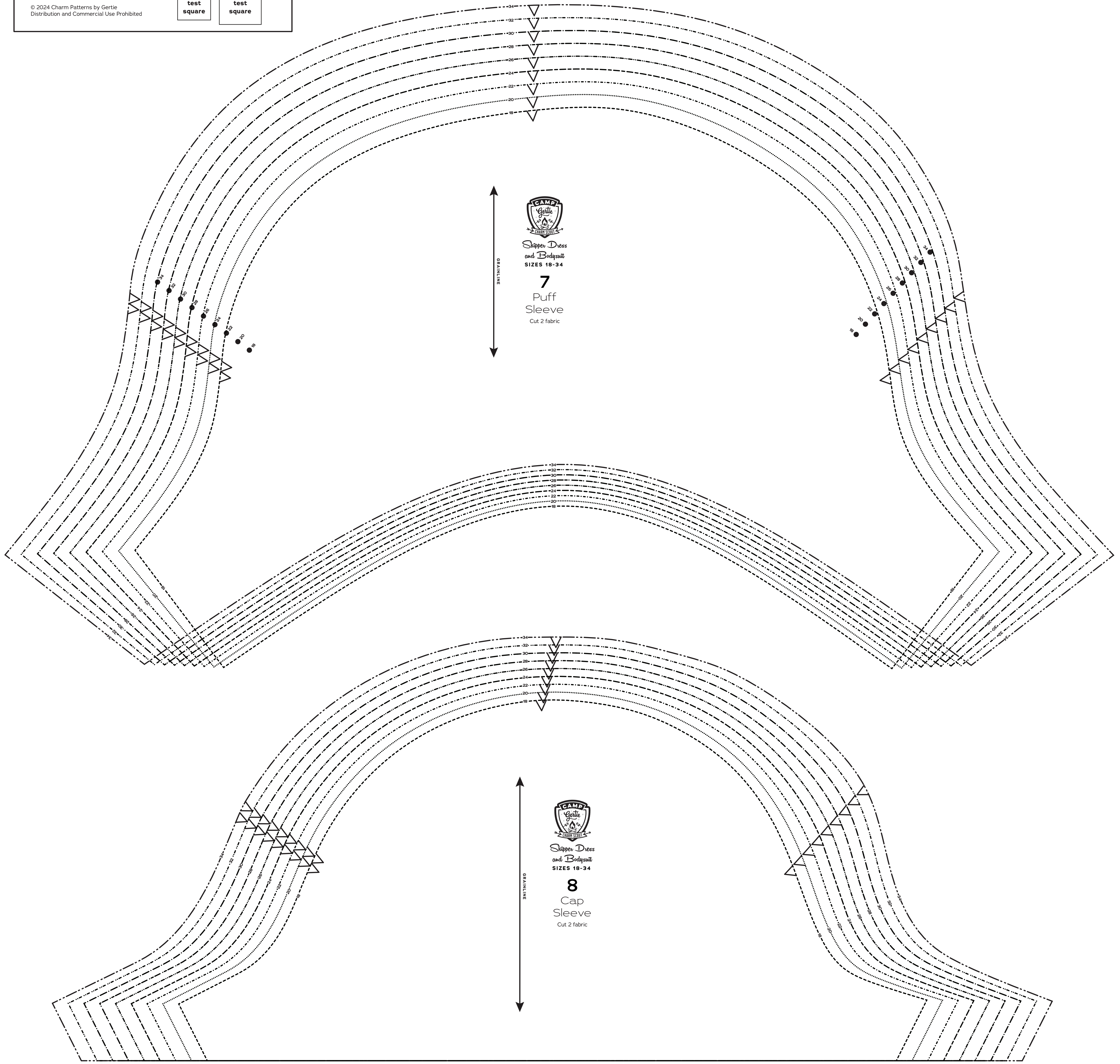
18	-----
20	-----
22	-----
24	-----
26	-----
28	-----
30	-----
32	-----
34	-----

SYMBOL KEY

	grainline arrow
	match point/ placement mark

2 cm
test
square

1 in
test
square



Skipper Dress and Bodysuit
SIZES 18-34

2
Skirt Back
Tape to bodice back and
cut 1 fabric on fold



Skipper Dress and Bodysuit

Sizes 18-34
with cup sizes A-H

5/8 inch (1.5 cm) seam allowances are included on all pattern pieces.

Page 2 of 3

PAGE 2 PATTERN PIECES

- 1 Skirt Front, F-H Cup
- 3 Bodysuit Front, F-H Cup
- 5 Scoop Neck Top Front, F-H Cup
- 6 Scoop Neck Top Back

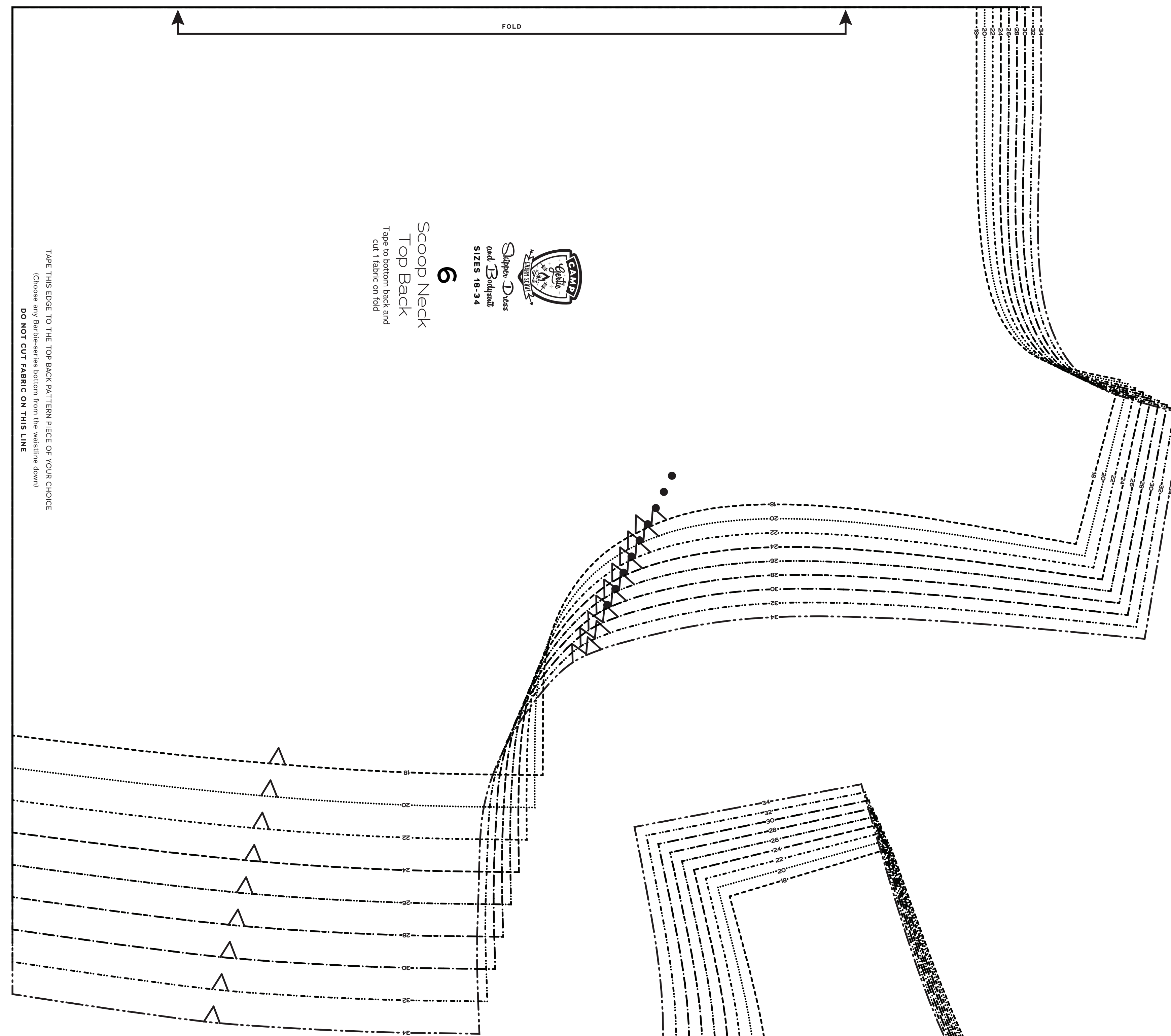
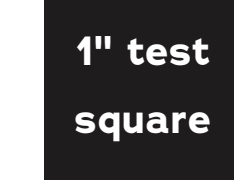
© 2021 Charm Patterns by Gertie
Distribution and Commercial Use Prohibited

PATTERN SIZE KEY

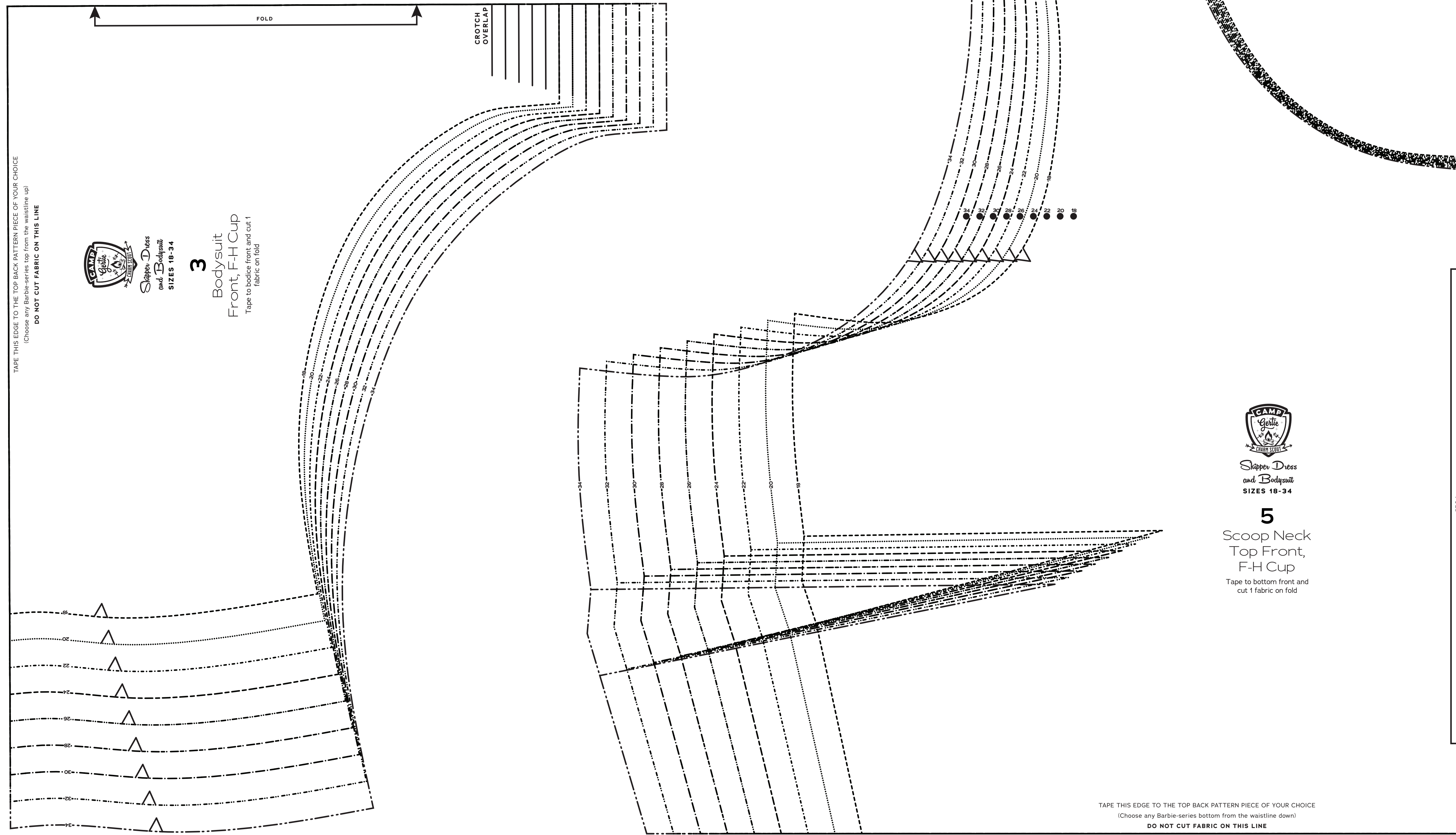
18	-----
20	-----
22	-----
24	-----
26	-----
28	-----
30	-----
32	-----
34	-----

SYMBOL KEY

	grainline arrow
	match point/ placement mark
	1" test square



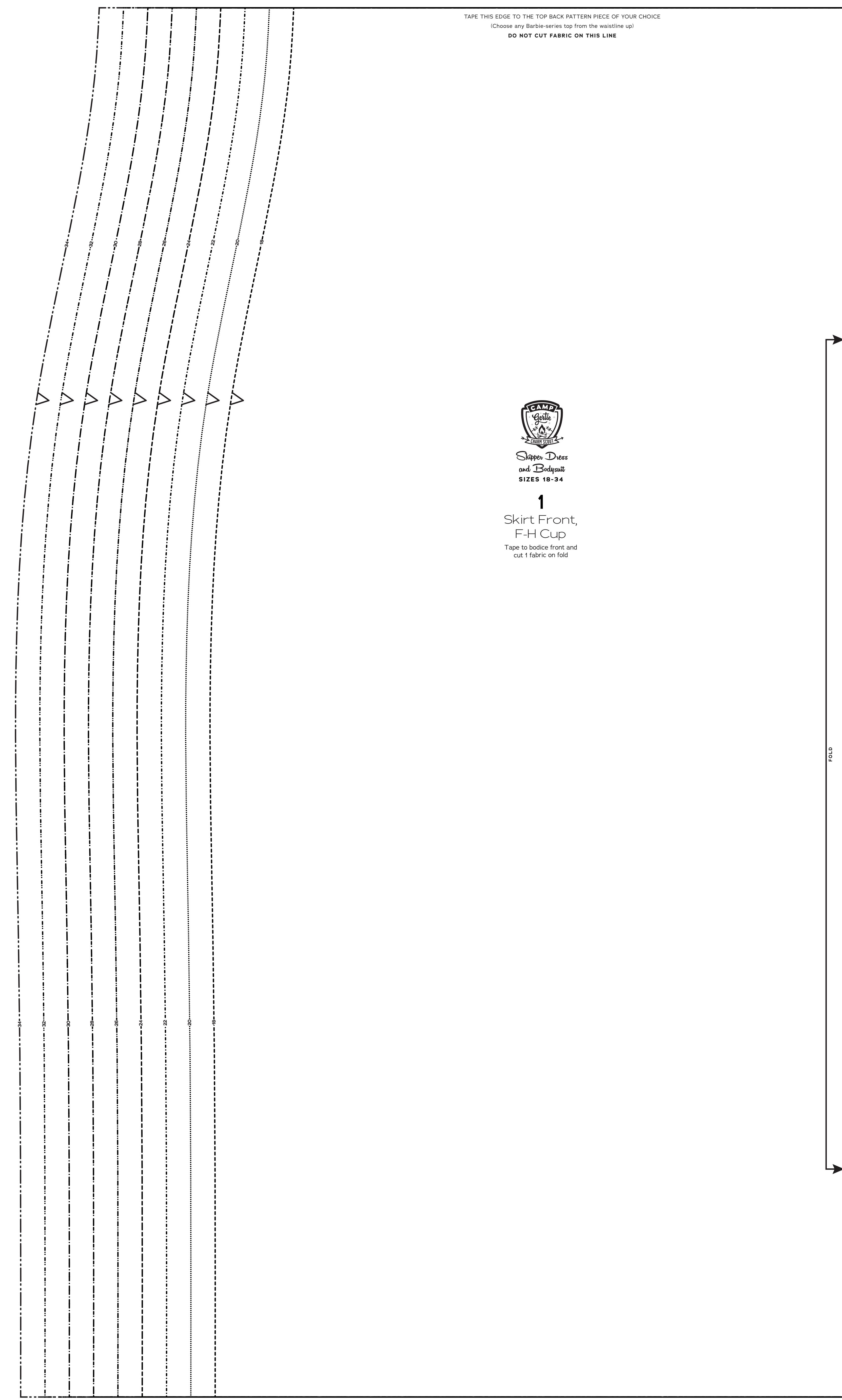
6
Scoop Neck
Top Back
Tape to bottom back and
cut 1 fabric on fold



3
Bodysuit
Front, F-H Cup
Tape to bodice front and
cut 1 fabric on fold



5
Scoop Neck
Top Front,
F-H Cup
Tape to bottom front and
cut 1 fabric on fold



1
Skirt Front,
F-H Cup
Tape to bodice front and
cut 1 fabric on fold

TAPE THIS EDGE TO THE TOP BACK PATTERN PIECE OF YOUR CHOICE
(Choose any Barbie-series bottom from the waistline down)
DO NOT CUT FABRIC ON THIS LINE



Sizes 18-34
with cup sizes A-H

5/8 inch (1.5 cm) seam allowances are included on all pattern pieces.

Page 3 of 3

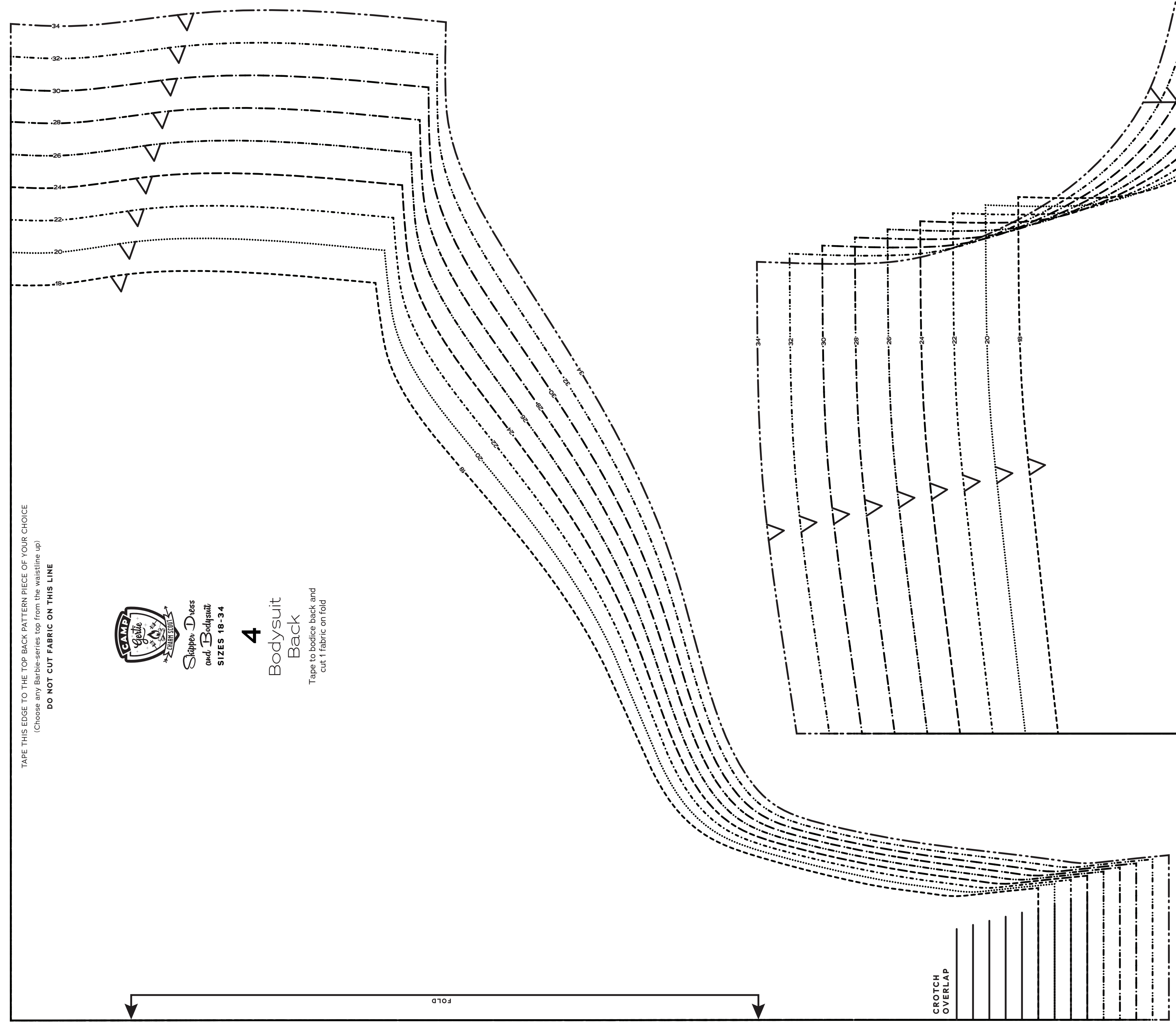
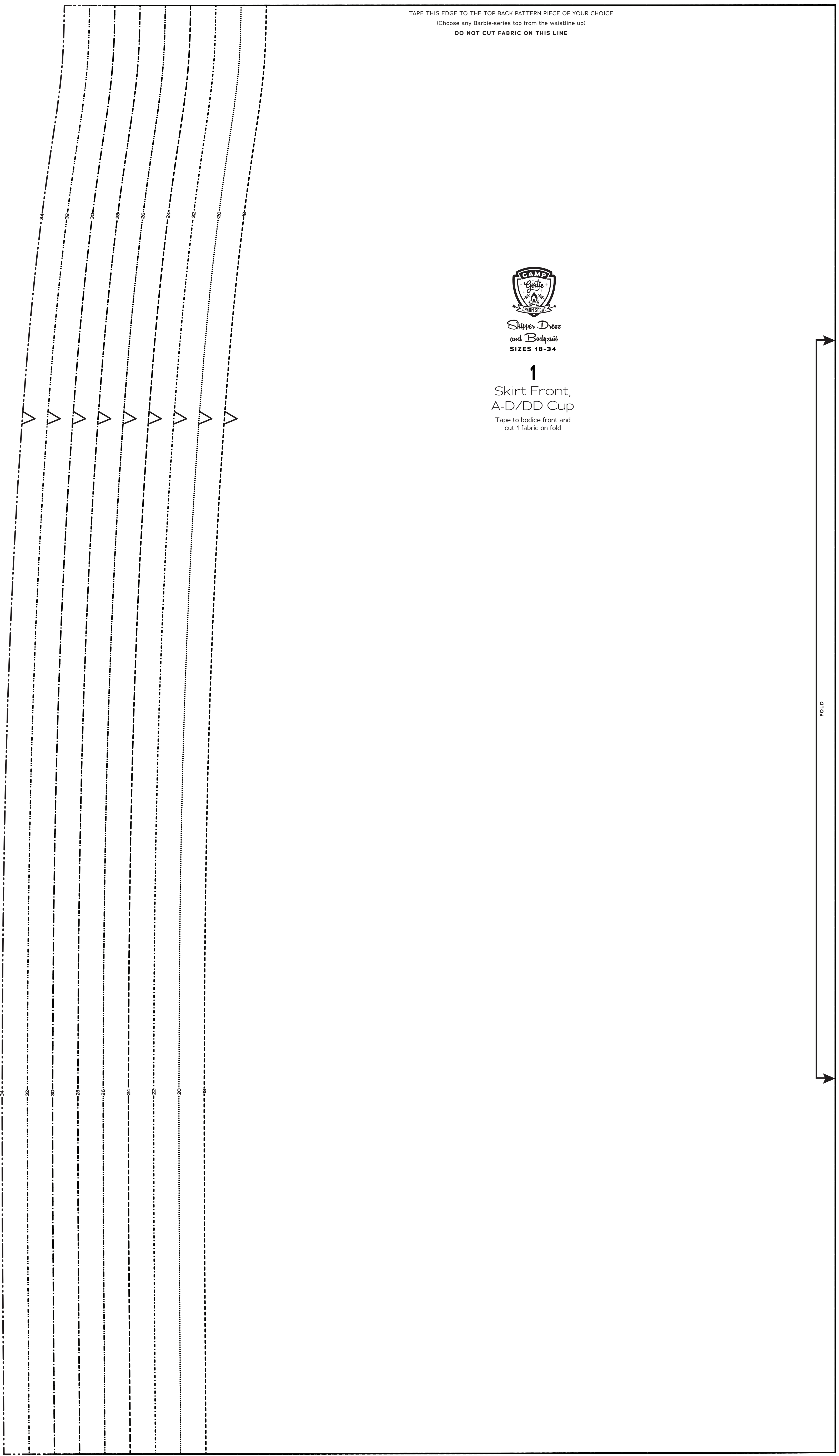
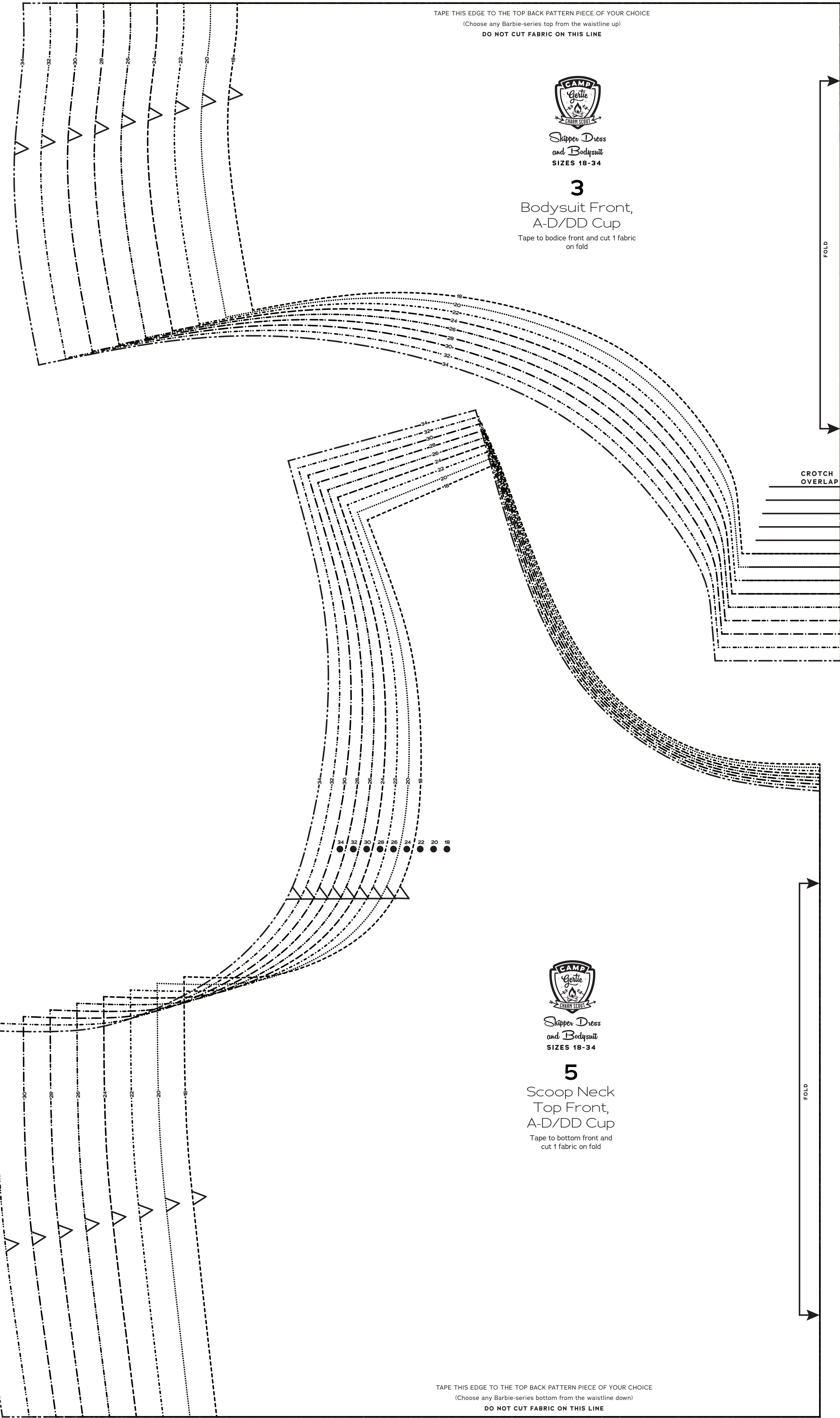
PAGE 3 PATTERN PIECES

- 1 Skirt Front, A-D/DD Cup
- 3 Bodysuit Front, A-D/DD Cup
- 4 Bodysuit Back
- 5 Scoop Neck Top Front, A-D/DD Cup

© 2021 Charm Patterns by Gertie
Distribution and Commercial Use Prohibited

PATTERN SIZE KEY	SYMBOL KEY
18 - - - - -	grainline arrow
20 - - - - -	↔
22 - - - - -	●
24 - - - - -	◀▶
26 - - - - -	●
28 - - - - -	●
30 - - - - -	●
32 - - - - -	●
34 - - - - -	●

1" test square



TAPE THIS EDGE TO THE TOP BACK PATTERN PIECE OF YOUR CHOICE
(Choose any Barbie-series top from the waistline up)
DO NOT CUT FABRIC ON THIS LINE



4
Bodysuit Back
Tape to bodice back and cut 1 fabric on fold

TAPE THIS EDGE TO THE TOP BACK PATTERN PIECE OF YOUR CHOICE
(Choose any Barbie-series bottom from the waistline down)
DO NOT CUT FABRIC ON THIS LINE

TAPE THIS EDGE TO THE TOP BACK PATTERN PIECE OF YOUR CHOICE
(Choose any Barbie-series top from the waistline up)
DO NOT CUT FABRIC ON THIS LINE



1
Skirt Front, A-D/DD Cup
Tape to bodice front and cut 1 fabric on fold

CROTCH OVERLAP

0104