

UNLESS OTHERWISE SPECIFIED:
DIMENSIONS ARE IN MILLIMETERS

UNLESS OTHERWISE SPECIFIED, TOLERANCES:
LINEAR: DIMENSIONS UNDER 15 MM ± 0.3
DIMENSIONS 15 MM AND OVER ± 1
ANGULAR: ±0.5°

REMOVE ALL BURRS AND SHARP EDGES
0.50 RADIUS OR CHAMFER MAX

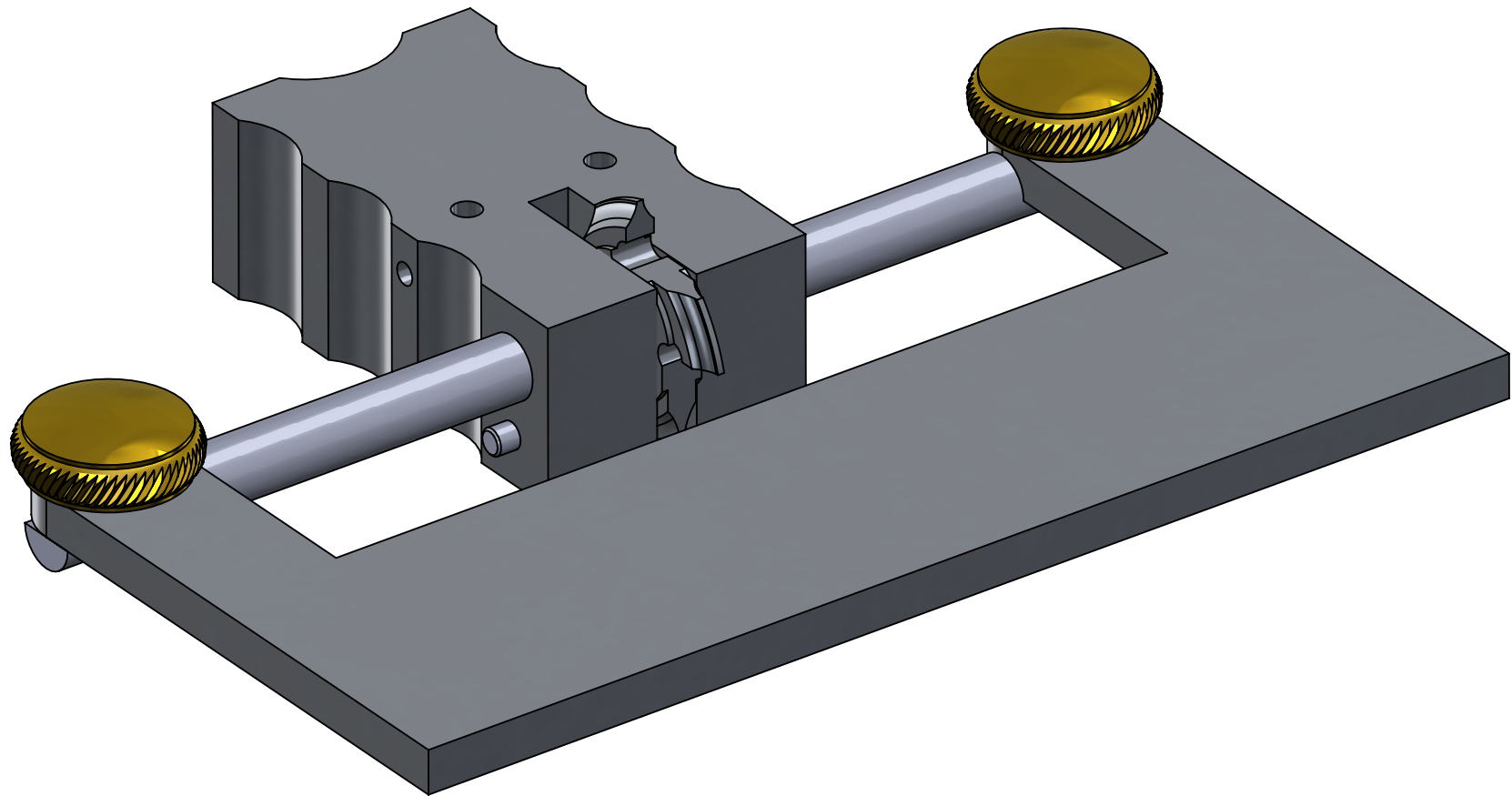
MATERIAL: BRASS, ALUMINUM, STEEL

COPYRIGHT © CLICKSPRING 2020

TITLE:
CUTTER SHARPENER

 CLICKSPRINGPROJECTS.COM A4

SCALE: 1:1 SHEET 1 OF 10



UNLESS OTHERWISE SPECIFIED:
DIMENSIONS ARE IN MILLIMETERS

UNLESS OTHERWISE SPECIFIED, TOLERANCES:
LINEAR: DIMENSIONS UNDER 15 MM ± 0.3
DIMENSIONS 15 MM AND OVER ± 1
ANGULAR: $\pm 0.5^\circ$

REMOVE ALL BURRS AND SHARP EDGES
0.50 RADIUS OR CHAMFER MAX

MATERIAL: BRASS, ALUMINUM, STEEL

COPYRIGHT © CLICKSPRING 2020

TITLE:

CUTTER SHARPENER (CUTTER CONFIG.)

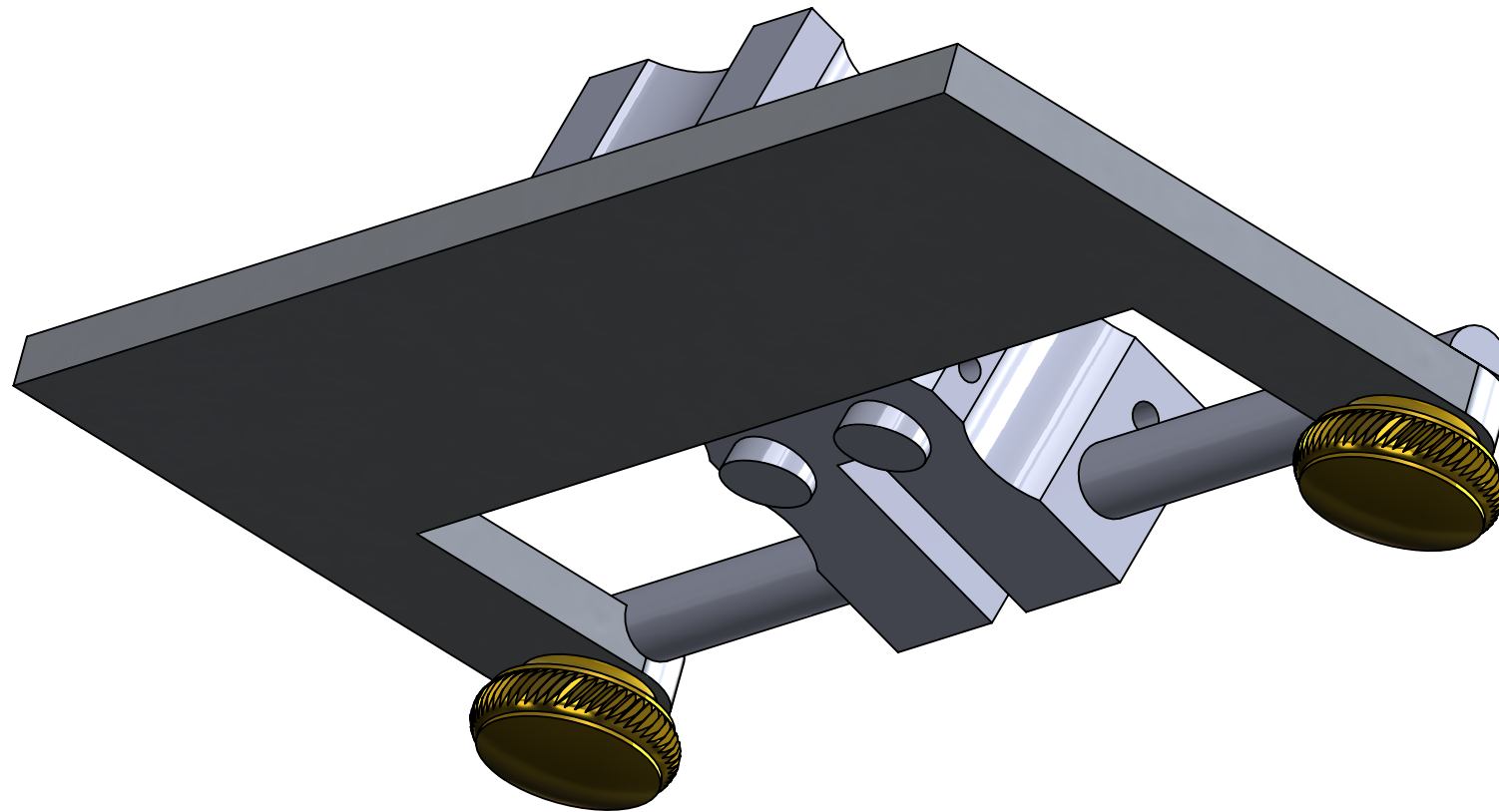


CLICKSPRINGPROJECTS.COM

A4

SCALE: 1.5:1

SHEET 2 OF 10



UNLESS OTHERWISE SPECIFIED:
DIMENSIONS ARE IN MILLIMETERS

UNLESS OTHERWISE SPECIFIED, TOLERANCES:
LINEAR: DIMENSIONS UNDER 15 MM ± 0.3
DIMENSIONS 15 MM AND OVER ± 1
ANGULAR: $\pm 0.5^\circ$

REMOVE ALL BURRS AND SHARP EDGES
0.50 RADIUS OR CHAMFER MAX

MATERIAL: BRASS, ALUMINUM, STEEL

COPYRIGHT © CLICKSPRING 2020

TITLE:

CUTTER SHARPENER (BUTTON CONFIG.)

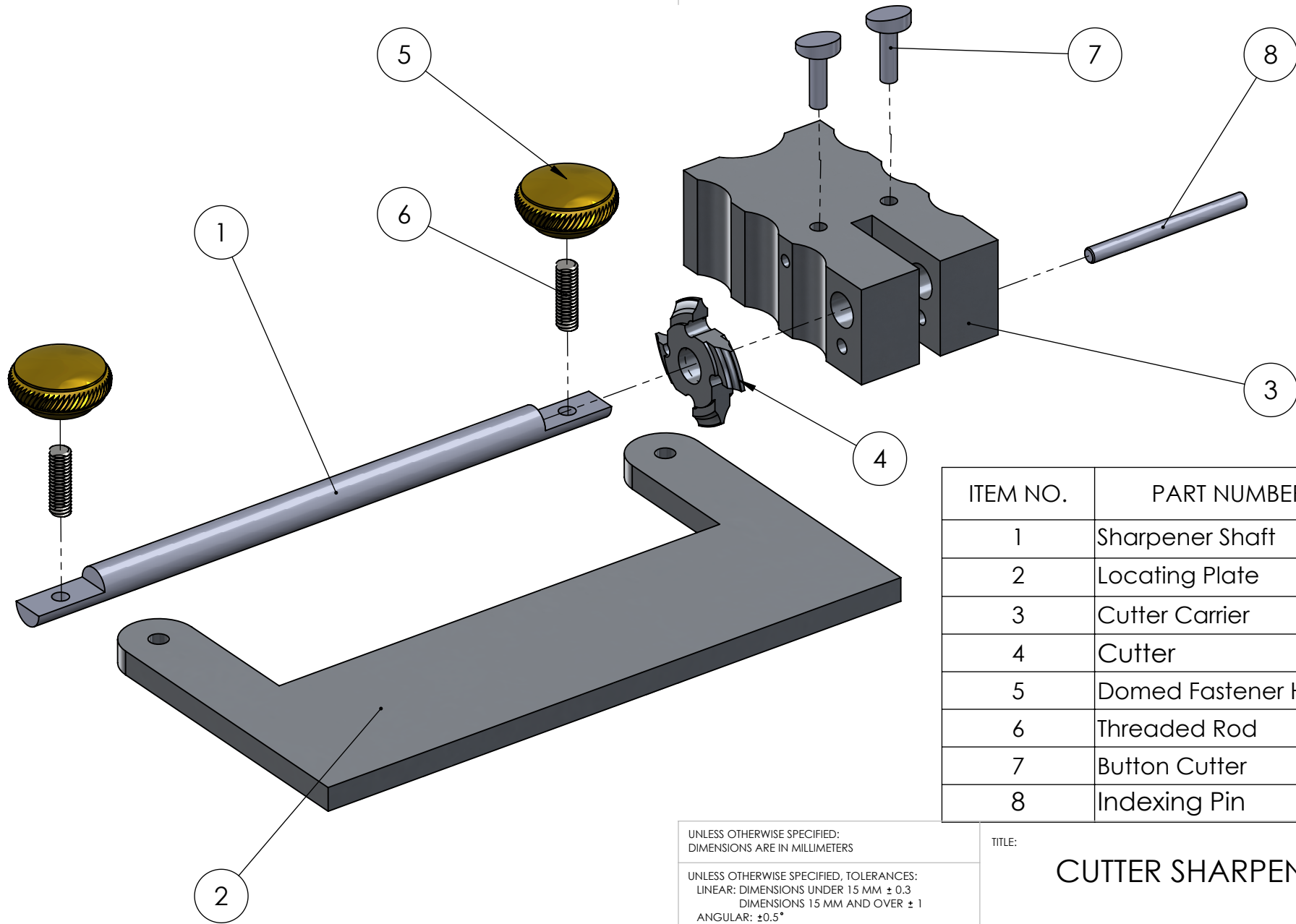


CLICKSPRINGPROJECTS.COM

A4

SCALE: 1.5:1

SHEET 3 OF 10



ITEM NO.	PART NUMBER	QTY.
1	Sharpener Shaft	1
2	Locating Plate	1
3	Cutter Carrier	1
4	Cutter	1
5	Domed Fastener Head	2
6	Threaded Rod	2
7	Button Cutter	2
8	Indexing Pin	1

UNLESS OTHERWISE SPECIFIED:
DIMENSIONS ARE IN MILLIMETERS

UNLESS OTHERWISE SPECIFIED, TOLERANCES:
LINEAR: DIMENSIONS UNDER 15 MM ± 0.3
DIMENSIONS 15 MM AND OVER ± 1
ANGULAR: $\pm 0.5^\circ$

REMOVE ALL BURRS AND SHARP EDGES
0.50 RADIUS OR CHAMFER MAX

MATERIAL: BRASS, ALUMINUM, STEEL

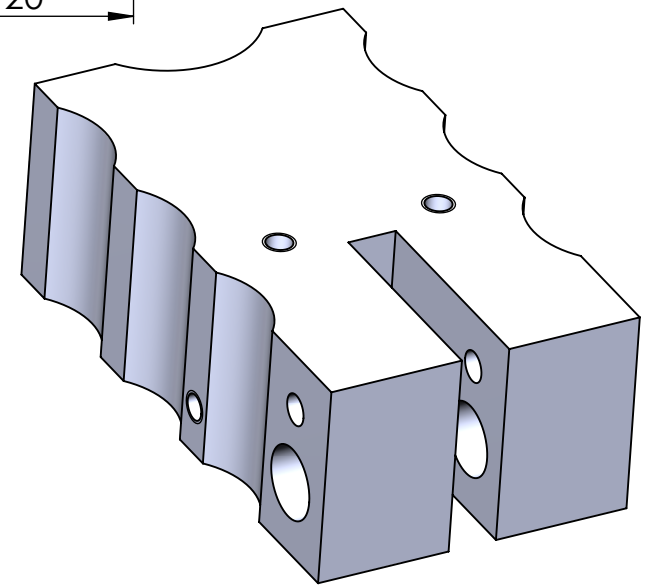
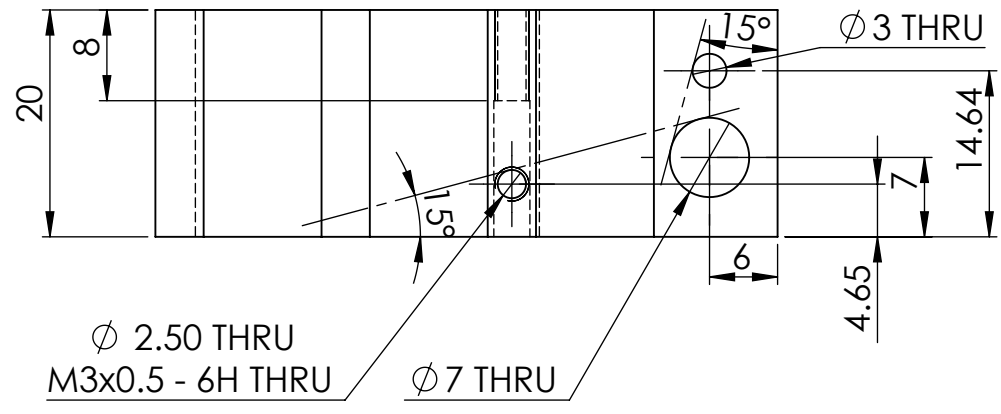
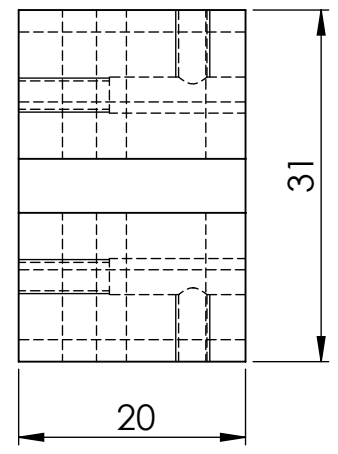
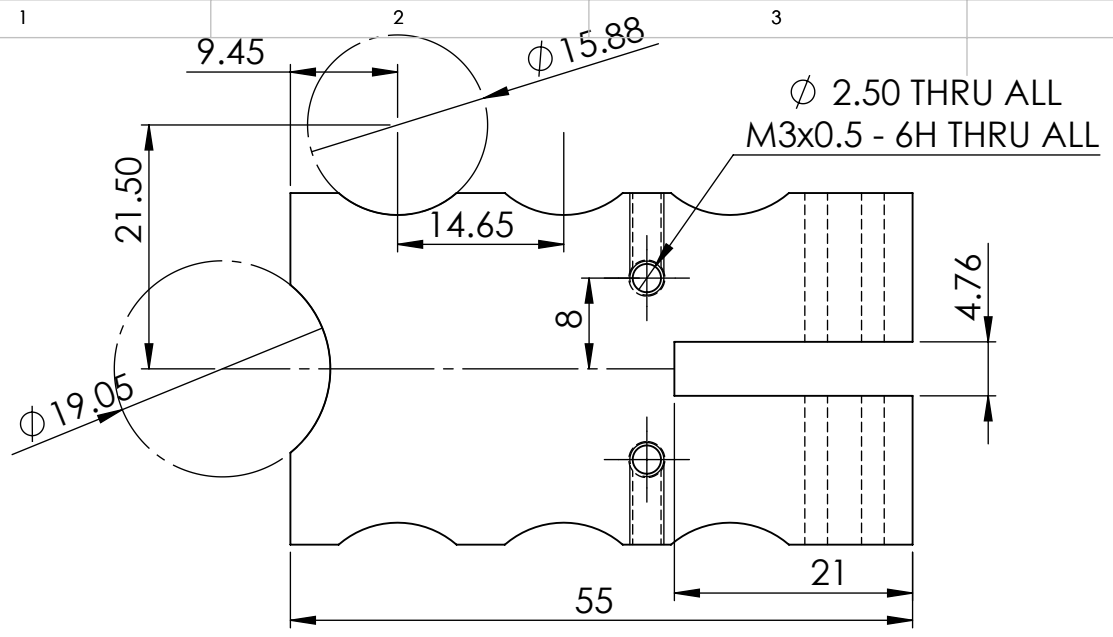
TITLE:

CUTTER SHARPENER



CLICKSPRINGPROJECTS.COM

A4



- NOTES, UNLESS OTHERWISE SPECIFIED
- SLOT FOR CUTTER NOMINALLY 3/16" CUT TO SUIT CUTTER BLANK STOCK
 - ANGLES ARE FOR EASY MILL LOCATION, REFER VIDEO PART 2

UNLESS OTHERWISE SPECIFIED: DIMENSIONS ARE IN MILLIMETERS

UNLESS OTHERWISE SPECIFIED, TOLERANCES:
 LINEAR: DIMENSIONS UNDER 15 MM ± 0.3
 DIMENSIONS 15 MM AND OVER ± 1
 ANGULAR: ±0.5°

REMOVE ALL BURRS AND SHARP EDGES
 0.50 RADIUS OR CHAMFER MAX

MATERIAL: ALUMINUM

COPYRIGHT © CLICKSPRING 2020

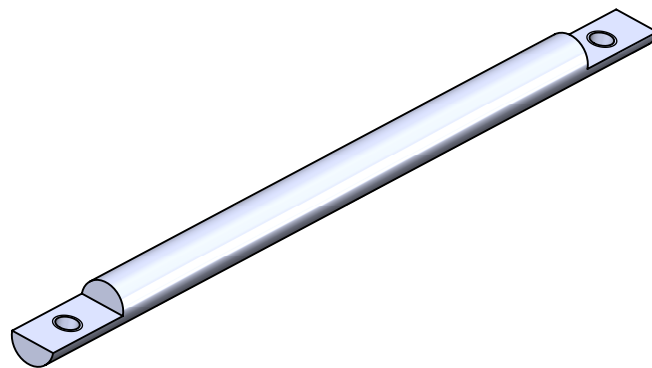
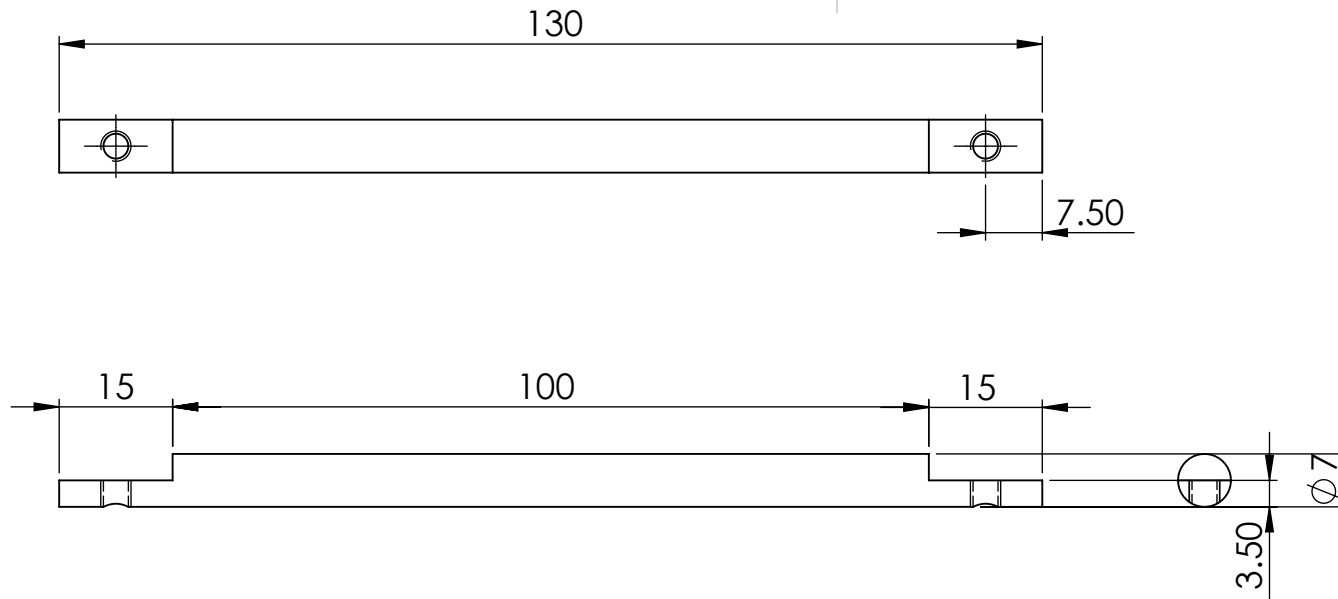
TITLE:

CUTTER CARRIER



CLICKSPRINGPROJECTS.COM

A4



- NOTES, UNLESS OTHERWISE SPECIFIED
- SHAFT OD NOMINALLY 7MM
 - REDUCE TO A CLOSE SLIDING FIT WITH INTENDED CUTTER BORE AS APPROPRIATE
 - 1/2 WAY MILL DIMENSION TO BE REDUCED ACCORDINGLY

UNLESS OTHERWISE SPECIFIED:
DIMENSIONS ARE IN MILLIMETERS

UNLESS OTHERWISE SPECIFIED, TOLERANCES:
LINEAR: DIMENSIONS UNDER 15 MM ± 0.3
DIMENSIONS 15 MM AND OVER ± 1
ANGULAR: $\pm 0.5^\circ$

REMOVE ALL BURRS AND SHARP EDGES
0.50 RADIUS OR CHAMFER MAX

MATERIAL: PLAIN CARBON STEEL

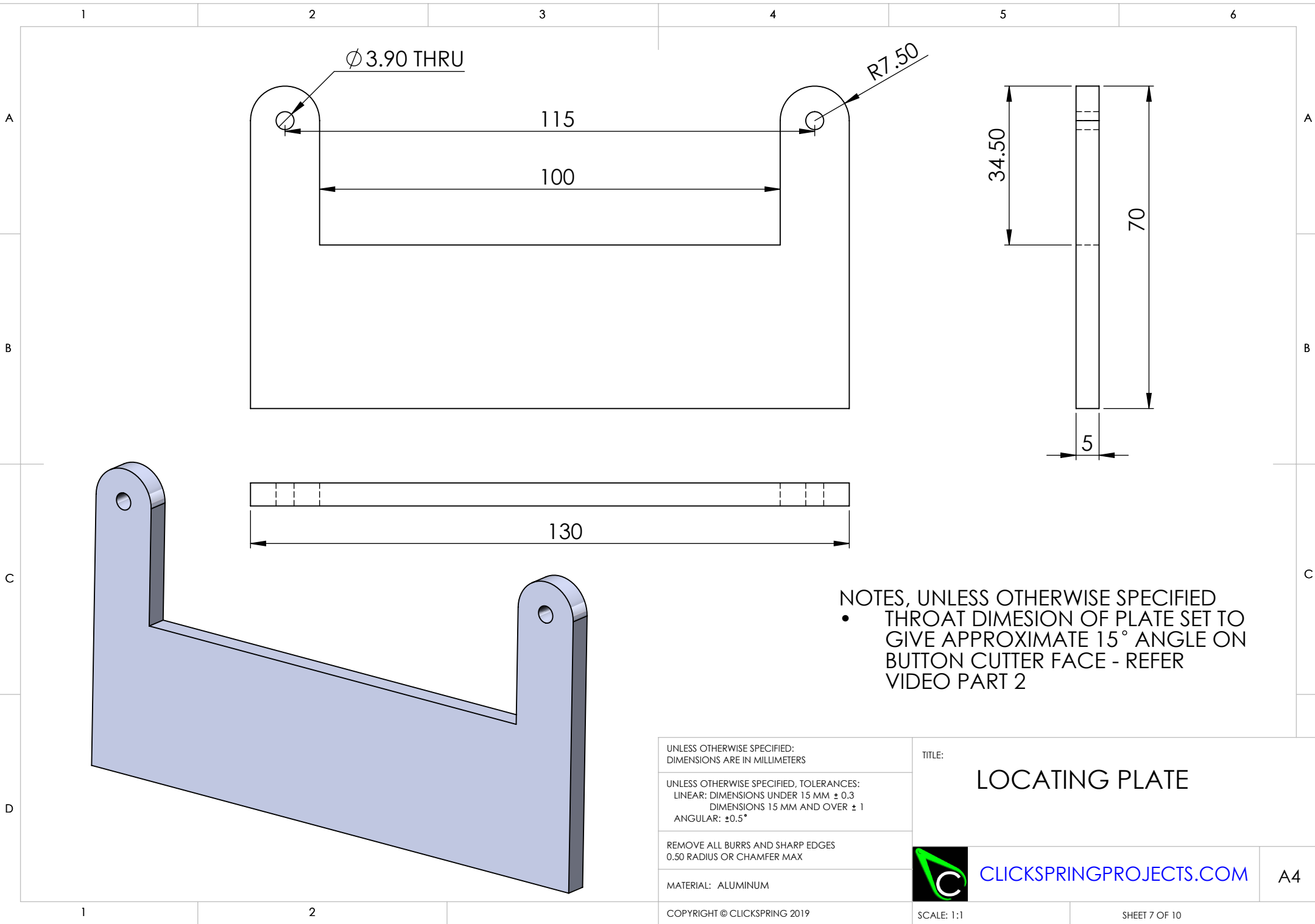
TITLE:

SHARPENER SHAFT



CLICKSPRINGPROJECTS.COM

A4



NOTES, UNLESS OTHERWISE SPECIFIED

- THROAT DIMENSION OF PLATE SET TO GIVE APPROXIMATE 15° ANGLE ON BUTTON CUTTER FACE - REFER VIDEO PART 2

UNLESS OTHERWISE SPECIFIED:
DIMENSIONS ARE IN MILLIMETERS

UNLESS OTHERWISE SPECIFIED, TOLERANCES:
LINEAR: DIMENSIONS UNDER 15 MM ± 0.3
DIMENSIONS 15 MM AND OVER ± 1
ANGULAR: $\pm 0.5^\circ$

REMOVE ALL BURRS AND SHARP EDGES
0.50 RADIUS OR CHAMFER MAX

MATERIAL: ALUMINUM

COPYRIGHT © CLICKSPRING 2019

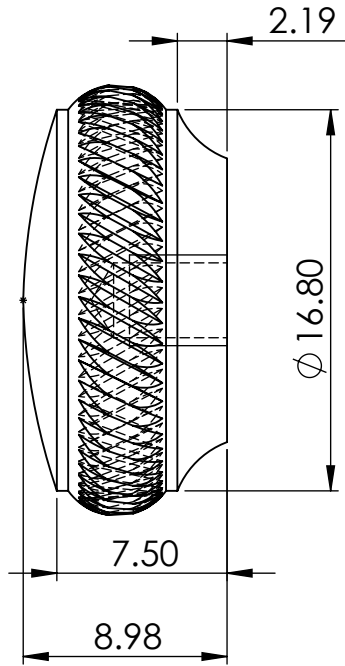
TITLE:
LOCATING PLATE

 CLICKSPRINGPROJECTS.COM

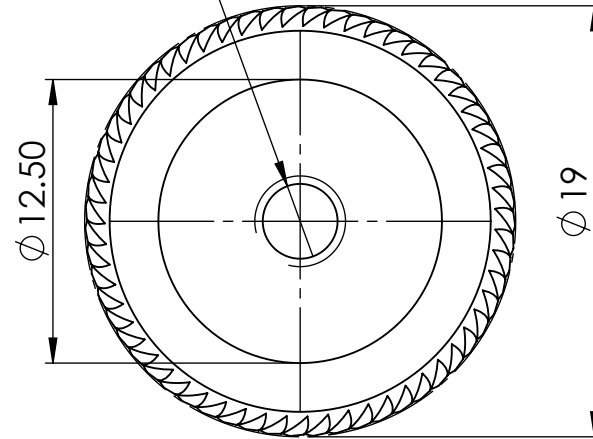
A4

SCALE: 1:1

SHEET 7 OF 10



$\phi 3.30 \nabla 5$
 $M4 \times 0.7 - 6H \nabla 4.30$



- NOTES, UNLESS OTHERWISE SPECIFIED
- PERIMETER ROPE KNURL TO TASTE, REFER VIDEO PART 1
 - THREAD NOMINALLY M4X0.7, SUBSTITUTE IMPERIAL EQUIVALENT AS APPROPRIATE

UNLESS OTHERWISE SPECIFIED:
 DIMENSIONS ARE IN MILLIMETERS

UNLESS OTHERWISE SPECIFIED, TOLERANCES:
 LINEAR: DIMENSIONS UNDER 15 MM ± 0.3
 DIMENSIONS 15 MM AND OVER ± 1
 ANGULAR: $\pm 0.5^\circ$

REMOVE ALL BURRS AND SHARP EDGES
 0.50 RADIUS OR CHAMFER MAX

MATERIAL: BRASS

TITLE:

FASTENER HEAD



CLICKSPRINGPROJECTS.COM

A4

1

2

3

4

5

6

A

A

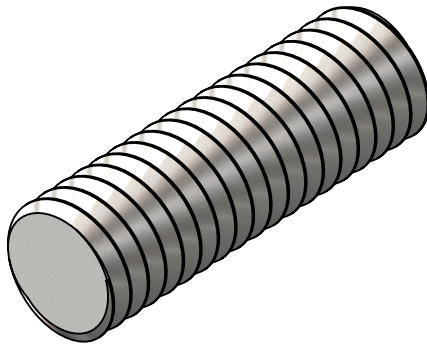
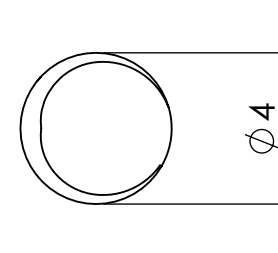
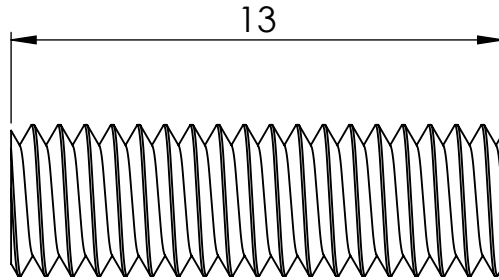
B

B

C

C

D



- NOTES, UNLESS OTHERWISE SPECIFIED
- THREAD NOMINALLY M4X0.7, SUBSTITUTE IMPERIAL EQUIVALENT AS APPROPRIATE

UNLESS OTHERWISE SPECIFIED:
DIMENSIONS ARE IN MILLIMETERS

UNLESS OTHERWISE SPECIFIED, TOLERANCES:
LINEAR: DIMENSIONS UNDER 15 MM ± 0.3
DIMENSIONS 15 MM AND OVER ± 1
ANGULAR: ±0.5°

REMOVE ALL BURRS AND SHARP EDGES
0.50 RADIUS OR CHAMFER MAX

MATERIAL: PLAIN CARBON STEEL

TITLE:

THREADED ROD



CLICKSPRINGPROJECTS.COM

A4

1

2

1

2

3

4

5

6

A

A

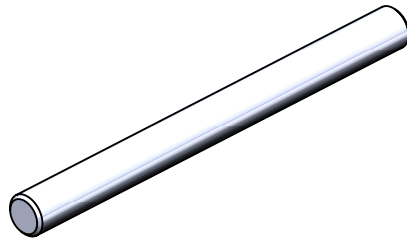
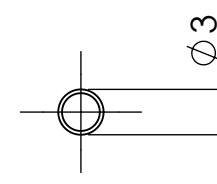
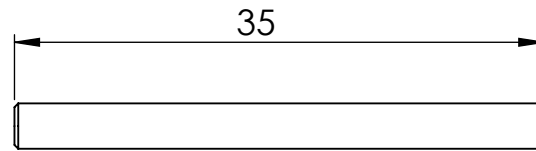
B

B

C

C

D



- NOTES, UNLESS OTHERWISE SPECIFIED
- GENEROUS CHAMFER ON ENDS
 - HSS DRILL ROD BLANK SUITABLE ALTERNATIVE TO O1 DRILL ROD

UNLESS OTHERWISE SPECIFIED:
DIMENSIONS ARE IN MILLIMETERS

UNLESS OTHERWISE SPECIFIED, TOLERANCES:
LINEAR: DIMENSIONS UNDER 15 MM ± 0.3
DIMENSIONS 15 MM AND OVER ± 1
ANGULAR: $\pm 0.5^\circ$

REMOVE ALL BURRS AND SHARP EDGES
0.50 RADIUS OR CHAMFER MAX

MATERIAL: PLAIN CARBON STEEL

TITLE:

INDEXING PIN



CLICKSPRINGPROJECTS.COM

A4

1

2

COPYRIGHT © CLICKSPRING 2020

SCALE: 2:1

SHEET 10 OF 10