



# Judy Vest

Sizes 18-34  
with cup sizes A-H

5/8 inch (1.5 cm) seam allowances  
are included on all pattern pieces.

Page 1 of 2

### PAGE 1 PATTERN PIECES

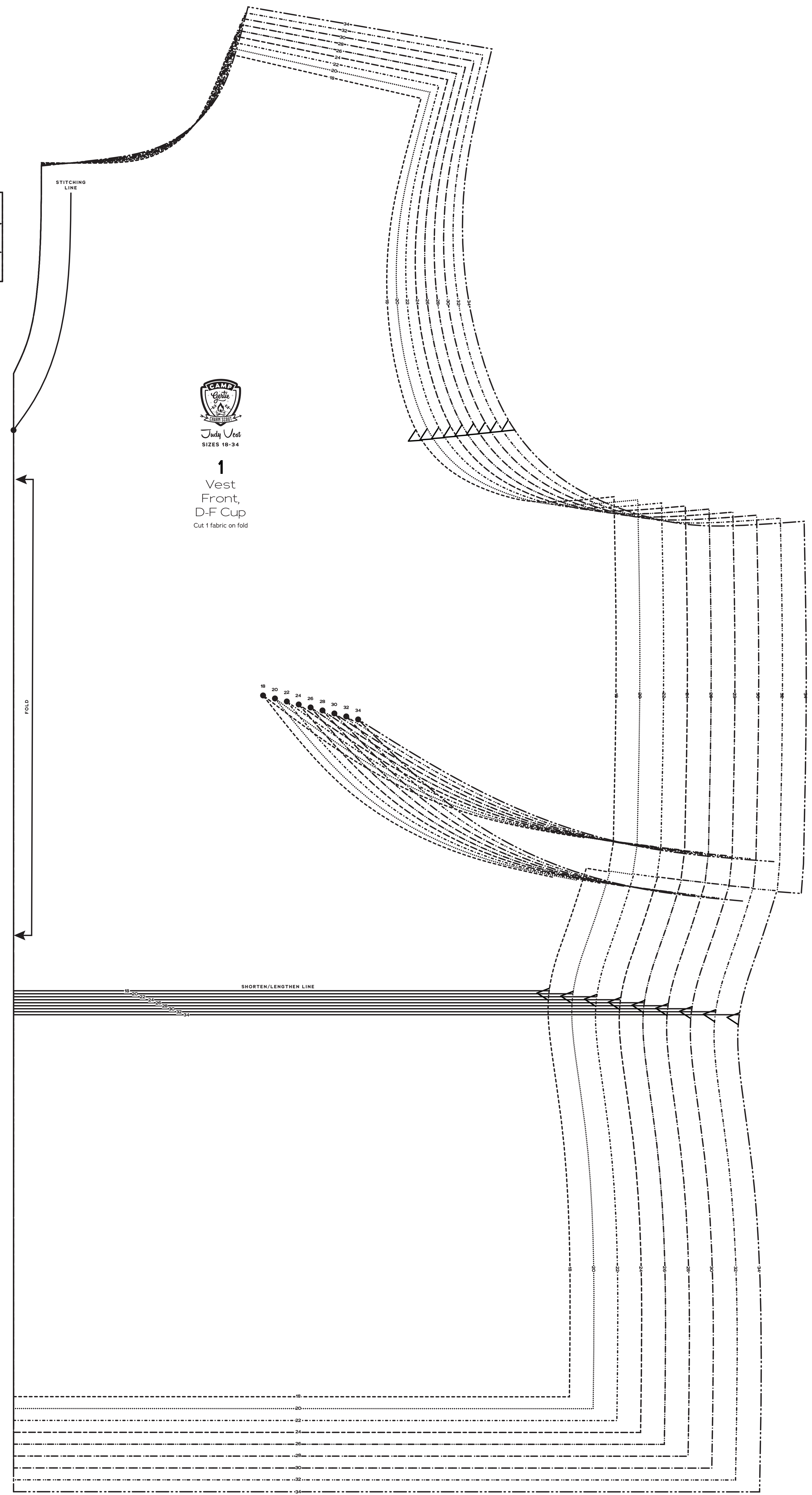
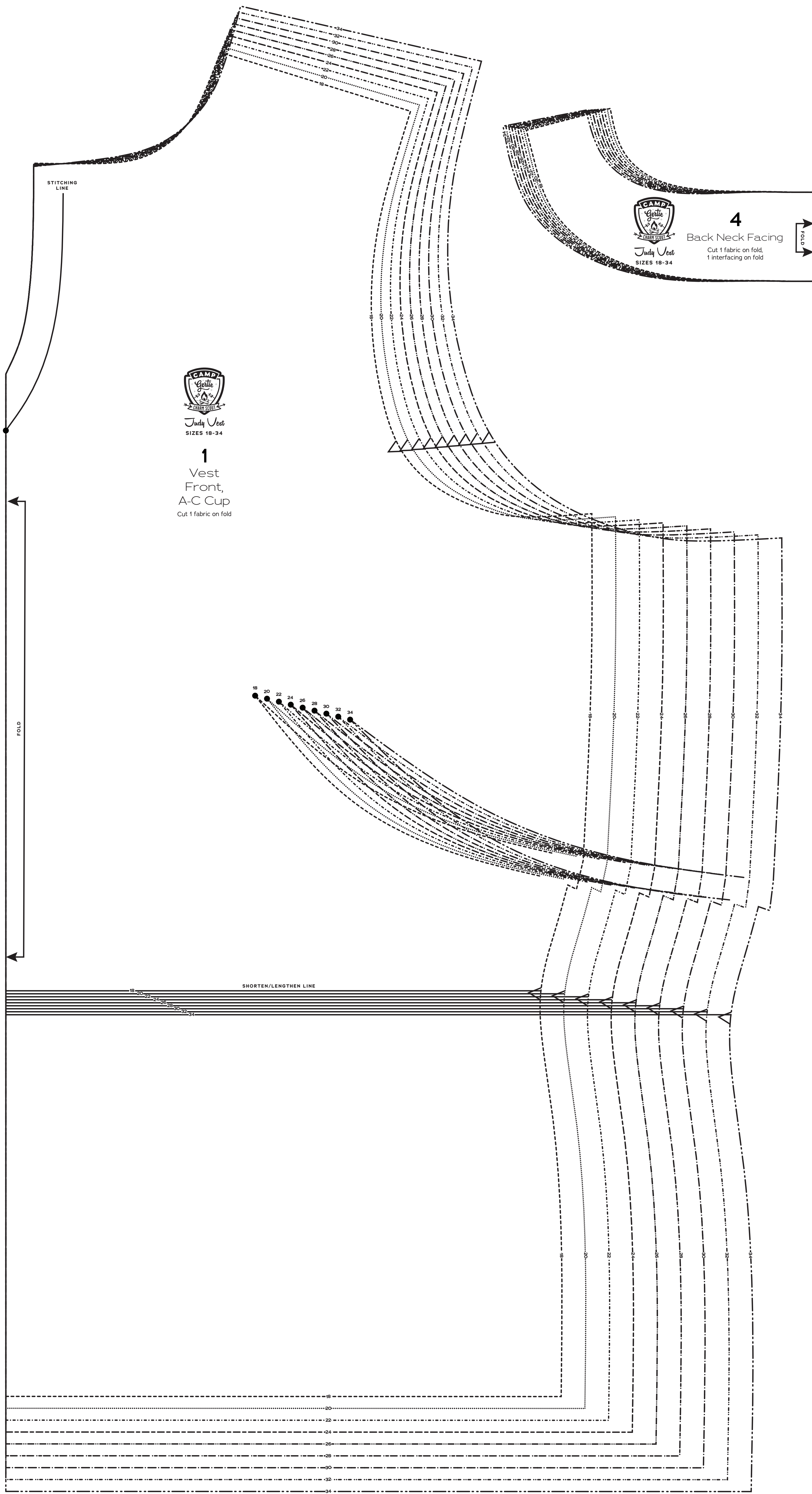
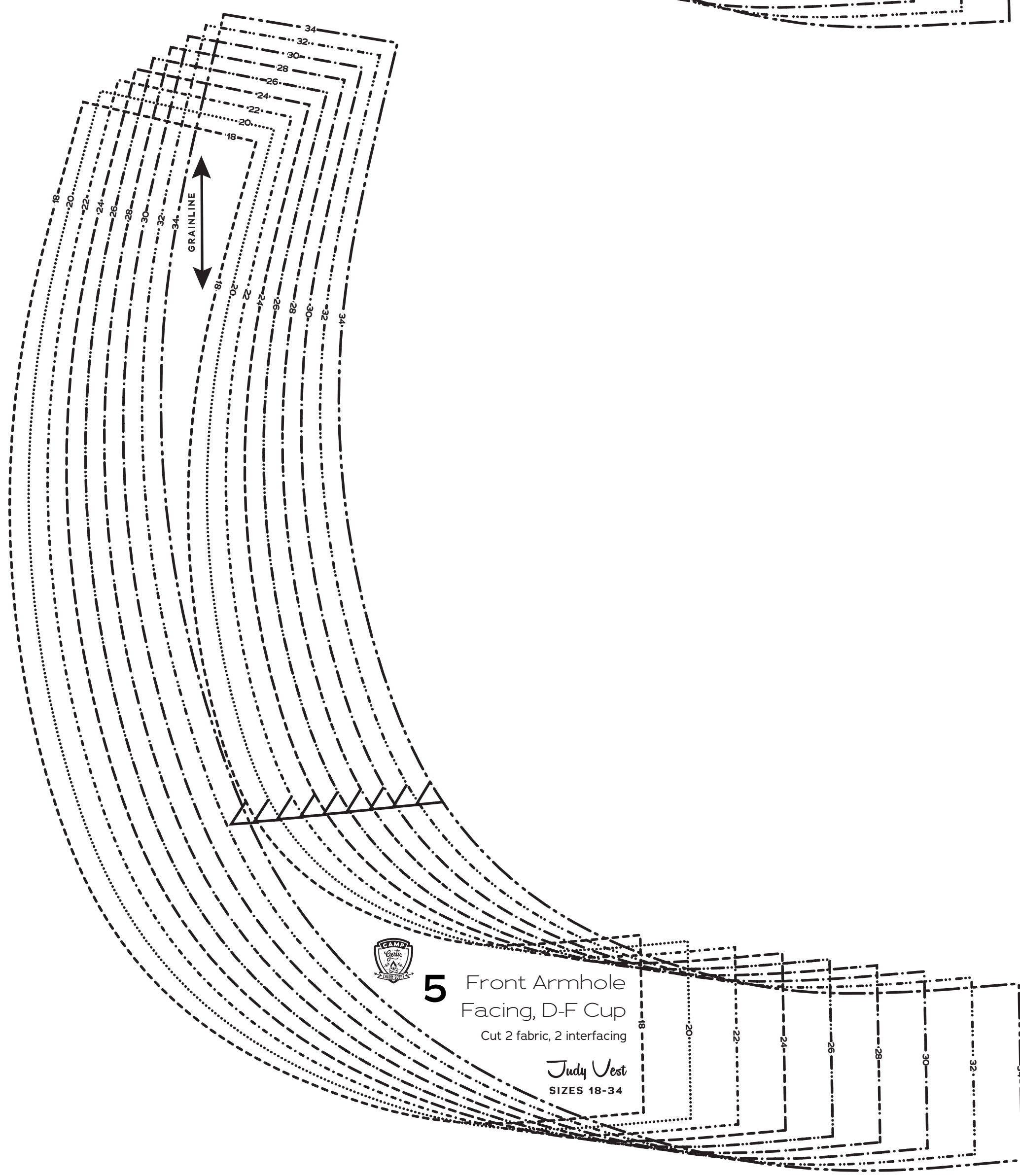
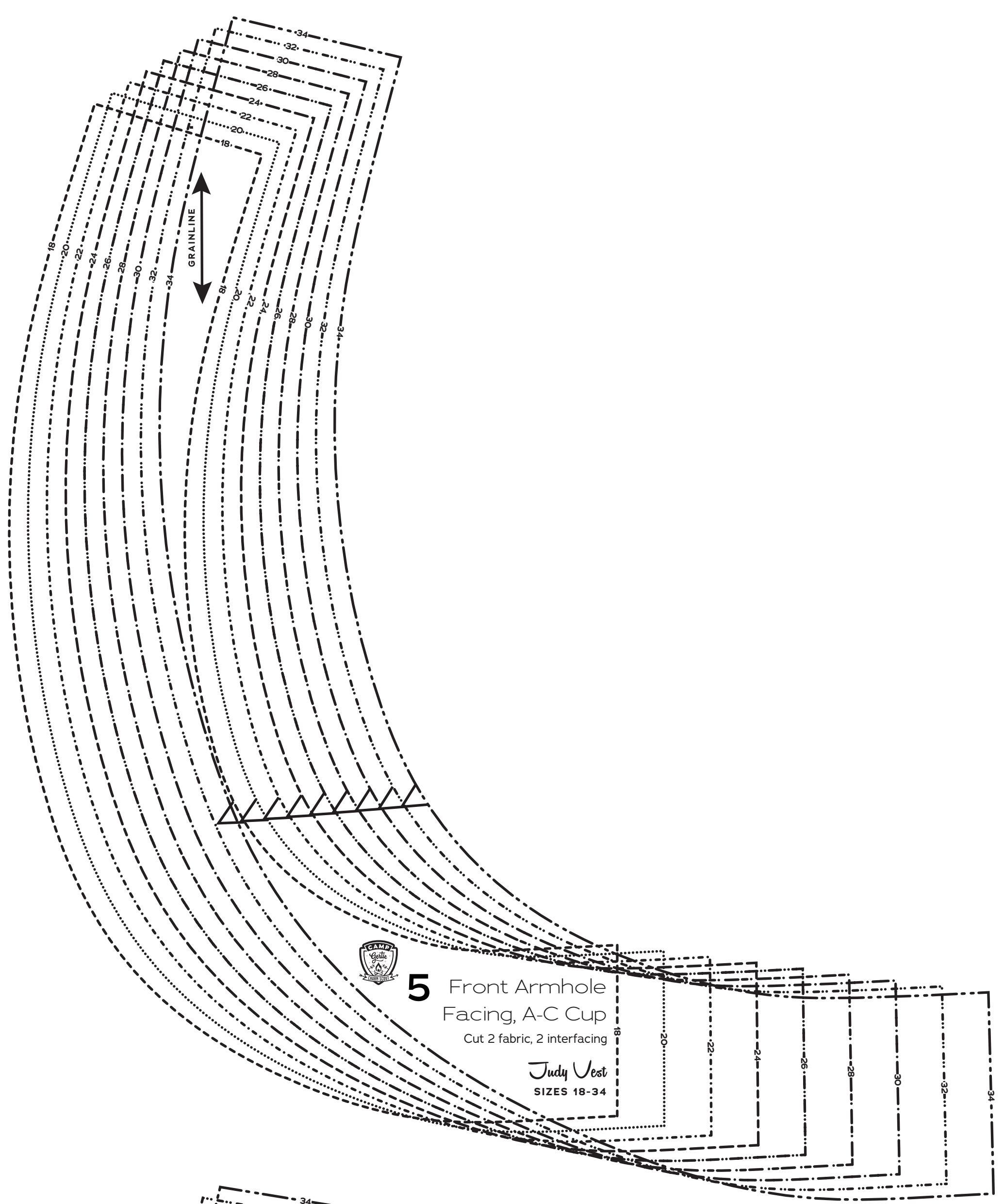
- 1 Vest Front, A-C Cup
- 1 Vest Front, D-F Cup
- 4 Back Neck Facing
- 5 Front Armhole Facing, A-C Cup
- 5 Front Armhole Facing, D-F Cup

**SIZE 18-34  
PATTERN SIZE KEY**

18	-----
20	-----
22	-----
24	-----
26	-----
28	-----
30	-----
32	-----
34	-----

**SYMBOL KEY**

- grainline arrow
- match point/  
placement mark
- 1" test  
square







# Judy Vest

Sizes 18-34  
with cup sizes A-H

5/8 inch (1.5 cm) seam allowances  
are included on all pattern pieces.

Page 2 of 2

### PAGE 2 PATTERN PIECES

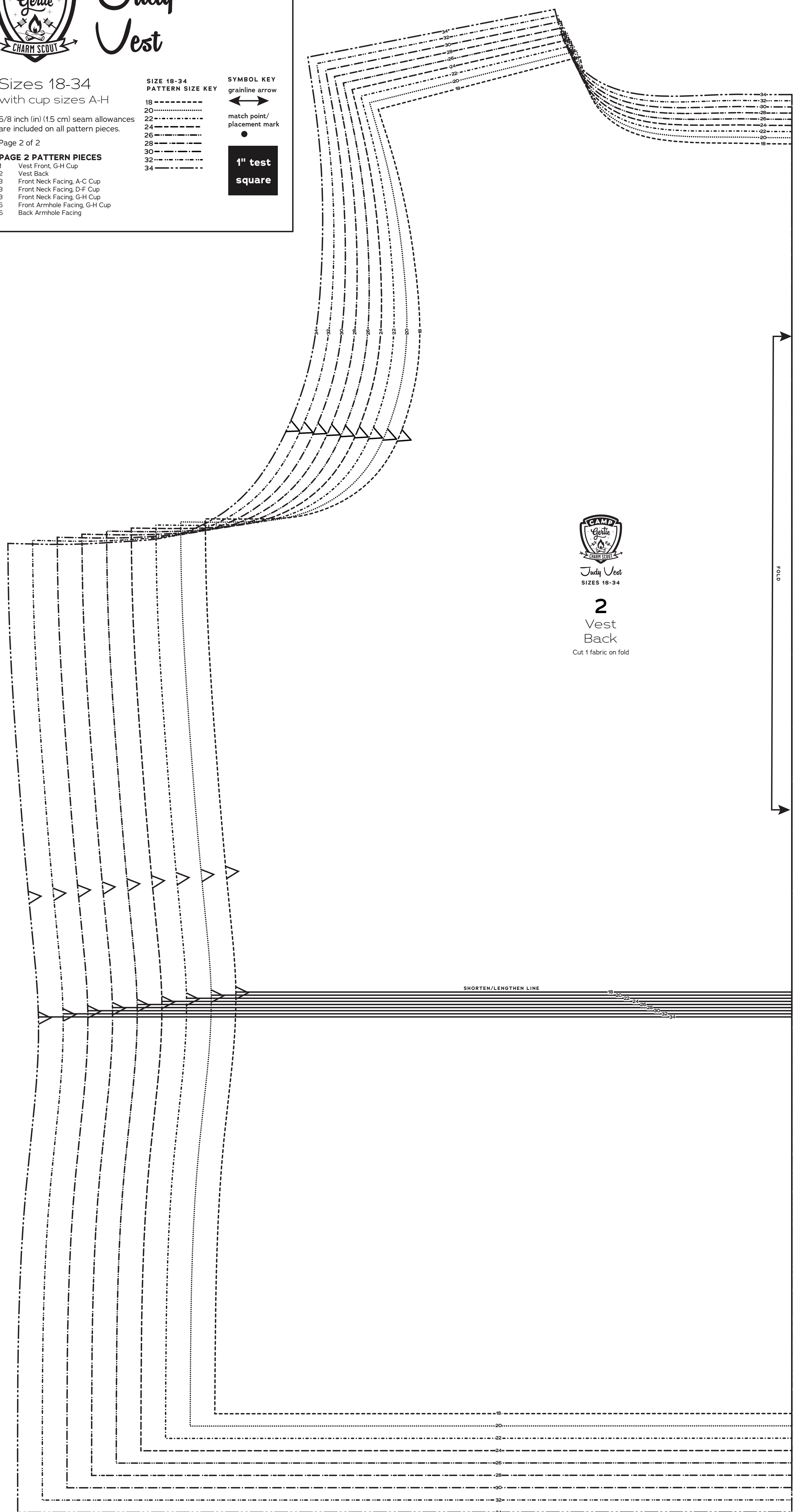
- 1 Vest Front, G-H Cup
- 2 Vest Back
- 3 Front Neck Facing, A-C Cup
- 3 Front Neck Facing, D-F Cup
- 3 Front Neck Facing, G-H Cup
- 5 Front Armhole Facing, G-H Cup
- 6 Back Armhole Facing

### SIZE 18-34 PATTERN SIZE KEY

- 18
- 20
- 22
- 24
- 26
- 28
- 30
- 32
- 34

### SYMBOL KEY

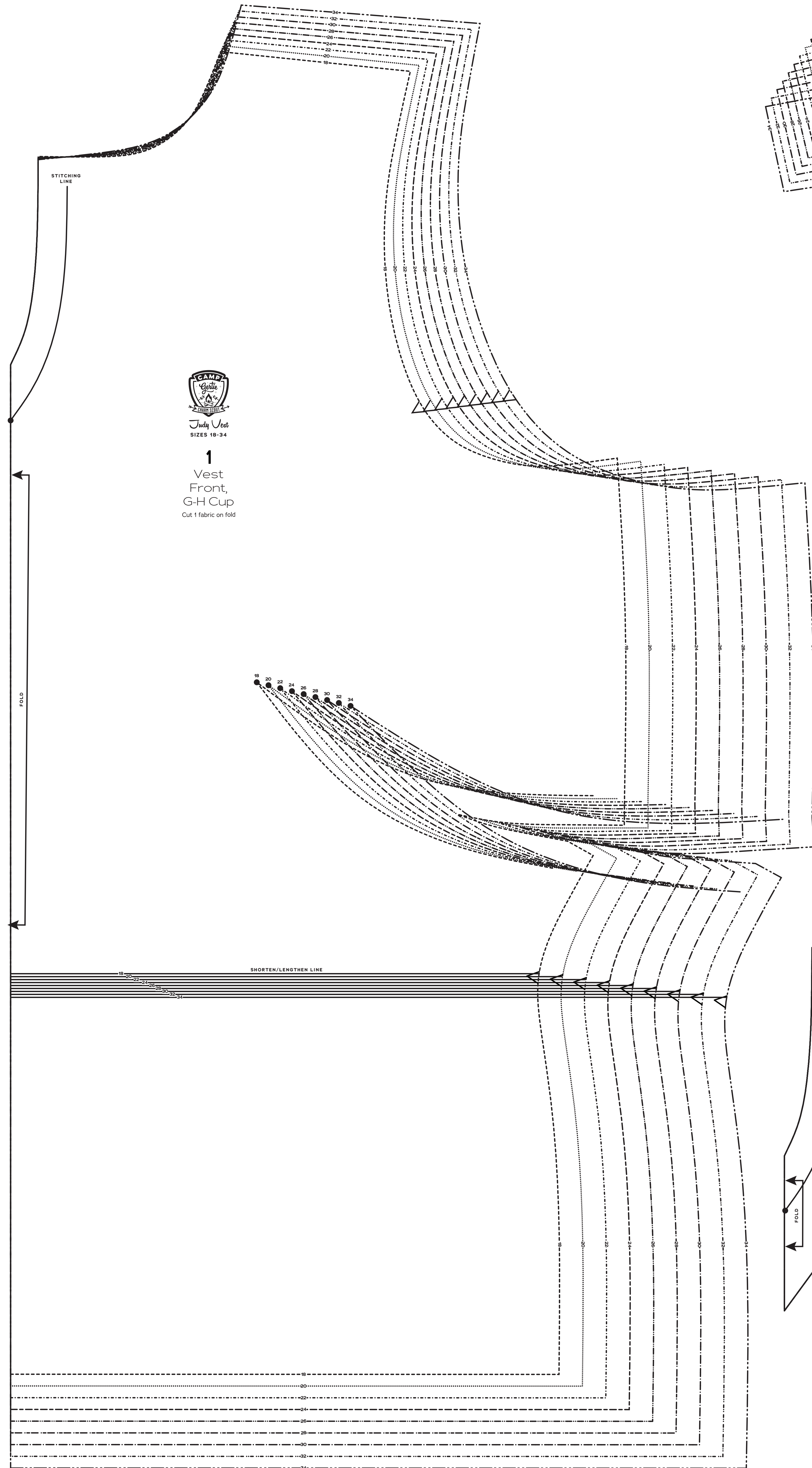
- grainline arrow
- match point/  
placement mark
- 1" test  
square



Judy Vest  
SIZES 18-34

**2**  
Vest  
Back

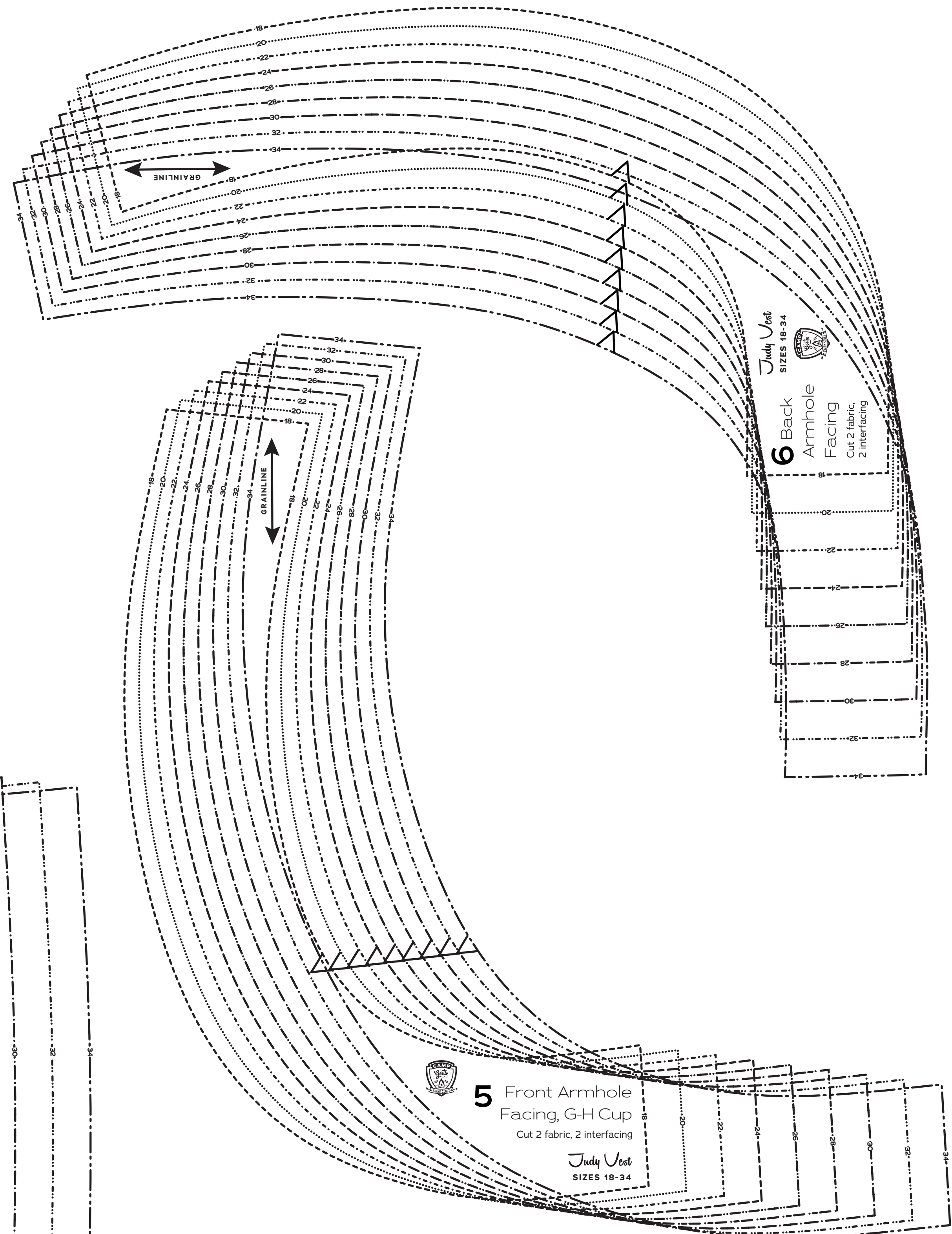
Cut 1 fabric on fold



Judy Vest  
SIZES 18-34

**1**  
Vest  
Front,  
G-H Cup

Cut 1 fabric on fold

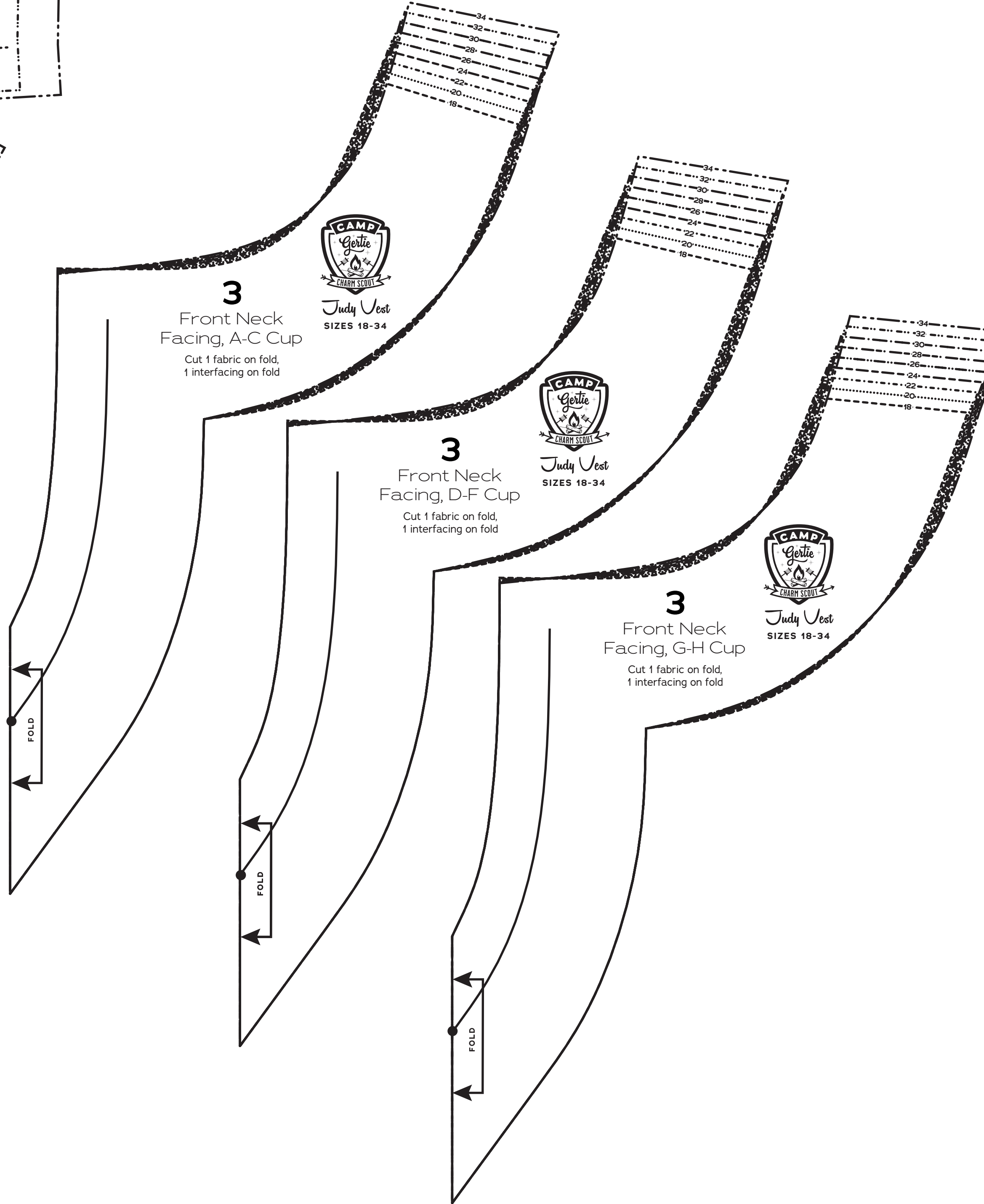


Judy Vest  
SIZES 18-34

**5**  
Front Armhole  
Facing, G-H Cup

Cut 2 fabric, 2 interfacing

Judy Vest  
SIZES 18-34



Judy Vest  
SIZES 18-34

**3**  
Front Neck  
Facing, A-C Cup

Cut 1 fabric on fold,  
1 interfacing on fold



Judy Vest  
SIZES 18-34

**3**  
Front Neck  
Facing, D-F Cup

Cut 1 fabric on fold,  
1 interfacing on fold



Judy Vest  
SIZES 18-34

**3**  
Front Neck  
Facing, G-H Cup

Cut 1 fabric on fold,  
1 interfacing on fold



Judy Vest  
SIZES 18-34

**6**  
Back  
Armhole  
Facing

Cut 2 fabric,  
2 interfacing