

Sizes 2-20  
with cup sizes A-H

5/8 inch (1.5 cm) seam allowances are included on all pattern pieces.

PAGE 1 OF 3

- PATTERN PIECE INDEX**
- 1 Slash Neck Front, A-C Cup
  - 1 Slash Neck Front, D-F Cup
  - 3 Sweetheart Neckline Front, A-C Cup
  - 3 Sweetheart Neckline Front, D-F Cup
  - 3 Sweetheart Neckline Front, G-H Cup
  - 10 Gathering Guide (for Sweetheart Neckline)

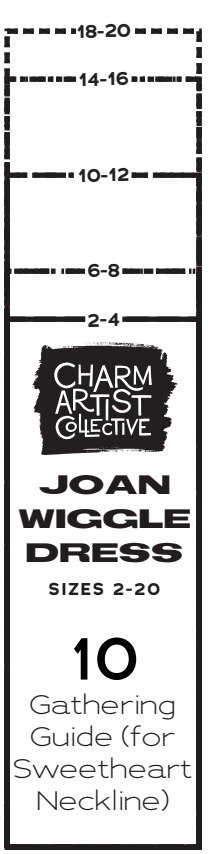
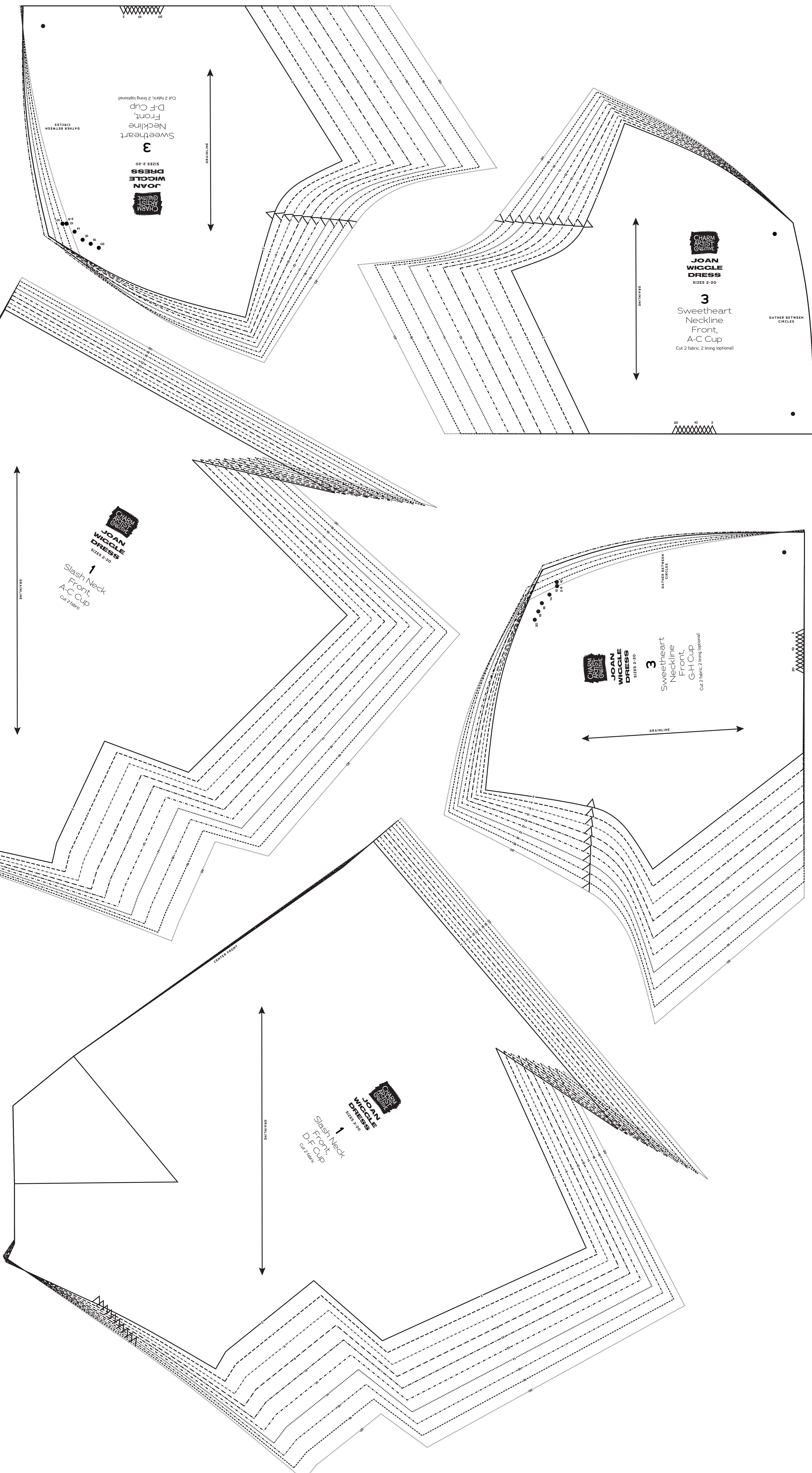
**SIZES 2-20**

**PATTERN SIZE KEY**

|    |       |
|----|-------|
| 2  | ----- |
| 4  | ----- |
| 6  | ----- |
| 8  | ----- |
| 10 | ----- |
| 12 | ----- |
| 14 | ----- |
| 16 | ----- |
| 18 | ----- |
| 20 | ----- |

**SYMBOL KEY**

- grainline arrow
- match point/  
placement mark





# JOAN WIGGLE DRESS

Sizes 2-20  
with cup sizes A-H

5/8 inch (1.5 cm) seam allowances  
are included on all pattern pieces.

PAGE 2 OF 3

### PATTERN PIECE INDEX

- 1 Slash Neck Front, G-H Cup
- 2 Slash Neck Back
- 3 Sleeve (for Sweetheart Neckline)
- 6 Skirt Center Front

SIZES 2-20  
PATTERN  
SIZE KEY

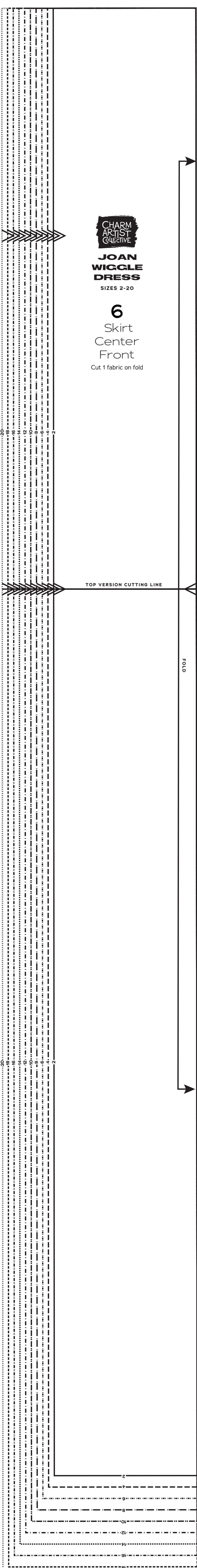
|    |       |
|----|-------|
| 2  | ----- |
| 4  | ----- |
| 6  | ----- |
| 8  | ----- |
| 10 | ----- |
| 12 | ----- |
| 14 | ----- |
| 16 | ----- |
| 18 | ----- |
| 20 | ----- |

### SYMBOL KEY

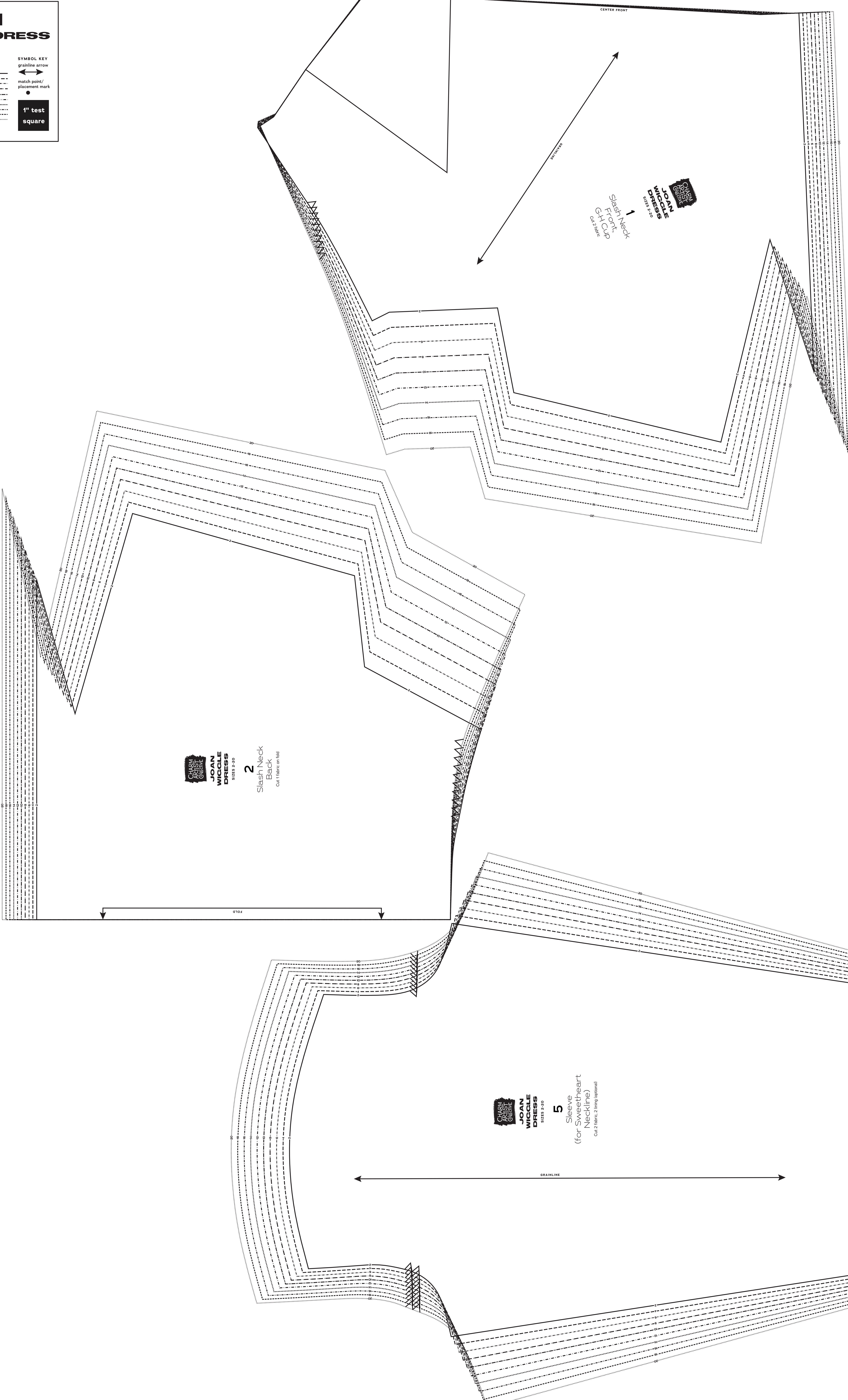
grainline arrow

match point/  
placement mark

1" test  
square



CHARM ARTIST COLLECTIVE  
**JOAN WIGGLE DRESS**  
SIZES 2-20  
**6**  
Skirt  
Center  
Front  
Cut 1 fabric on fold



CHARM ARTIST COLLECTIVE  
**JOAN WIGGLE DRESS**  
SIZES 2-20  
**2**  
Slash Neck  
Back  
Cut 1 fabric on fold

CHARM ARTIST COLLECTIVE  
**JOAN WIGGLE DRESS**  
SIZES 2-20  
**1**  
Slash Neck  
Front, G-H Cup

CHARM ARTIST COLLECTIVE  
**JOAN WIGGLE DRESS**  
SIZES 2-20  
**5**  
Sleeve  
(for Sweetheart  
Neckline)  
Cut 2 fabric, 2 lining (optional)

Sleeve  
(for Sweetheart  
Neckline)  
Cut 2 fabric, 2 lining (optional)



# JOAN WIGGLE DRESS

Sizes 2-20  
with cup sizes A-H

5/8 inch (1.5 cm) seam allowances  
are included on all pattern pieces.

PAGE 3 OF 3

### PATTERN PIECE INDEX

- 4 Sweetheart Neckline Back
- 7 Skirt Side Front
- 8 Skirt Center Back
- 9 Skirt Side Back

**SIZES 2-20  
PATTERN  
SIZE KEY**

|    |       |
|----|-------|
| 2  | ----- |
| 4  | ----- |
| 6  | ----- |
| 8  | ----- |
| 10 | ----- |
| 12 | ----- |
| 14 | ----- |
| 16 | ----- |
| 18 | ----- |
| 20 | ----- |

**SYMBOL KEY**

- grainline arrow
- match point/  
placement mark
- 1" test  
square

